



[Manuals.plus](#) /

› [FEITON](#) /

› FEITON RB741 FM135 Gate Opener Remote Control User Manual

FEITON RB741 FM135

FEITON RB741 FM135 Gate Opener Remote Control User Manual

Brand: FEITON | Model: RB741 FM135

INTRODUCTION

This manual provides comprehensive instructions for the installation, operation, and maintenance of your FEITON RB741 FM135 Gate Opener Remote Control. Please read this manual carefully before using the product to ensure proper function and longevity. This remote is designed to provide convenient and reliable control for compatible gate and garage door openers.

PRODUCT OVERVIEW

The FEITON RB741 FM135 remote control is a compact and portable device designed for easy access to your gate or garage door. It features a single button for operation and comes with a visor clip for convenient storage in your vehicle.



Image: A set of three FEITON RB741 FM135 remote controls, showcasing their compact design.

Package Contents

- FEITON RB741 FM135 Remote Control(s)
- Visor Clip
- Instruction Manual (this document)
- 12V 23A Battery (may be pre-installed or included separately)

PACKAGE INCLUDE



RB741 FM135 Remote Control Door Opener



battery 12v 23a



Visor Clip

Setting Your Personal Transmitter Code

1. Remove the Transmitter Cover

On the back of the transmitter is a small Phillips head screw. After its removal, the transmitter cover will slide off the rear of the transmitter. The transmitter cover should be removed. While the transmitter cover is removed, the battery and the DIP switches will be exposed. Insert a new code, or a small transmitter to reset the transmitter.



2. Set the transmitter DIP Switches

There are nine (9) transmitter DIP switches, each can be placed in either different position on "0" or "1". DO NOT set the switches in the same position, such as all 0's or all 1's. Place the DIP switches to set a personal code, repeat four times.



3. "Teach" the New Code to Control Board Memory

A. Press and HOLD LEARN BUTTON for 1 second on the receiver control board.

B. Press transmitter transmitter, until indicator light on.

C. The new code is stored in control board memory.



4. Delete transmitter code from control board memory

Press and HOLD LEARN BUTTON on control board and STATUS led goes off (about 3 seconds) code is deleted.

Manual

Image: Detailed view of the package contents, including the remote control with dimensions (2.5 inches by 1.5 inches), a 12V 23A battery, a visor clip, and a small instruction manual.

SETUP AND INSTALLATION

Follow these steps carefully to program your FEITON RB741 FM135 remote control to your gate or garage door opener.

EASY TO INSTALL

Setting Your Personal Transmitter Code

1. Remove the Transmitter Cover

On the back of the transmitter use a small phillips head screw driver to remove the two screws on the sides of the visor clip and separate the front cover from the transmitter. With the front cover removed, the battery and the DIP switches will be exposed. To set a new code, use a small screwdriver to move the switches.



2. Set the transmitter DIP Switches

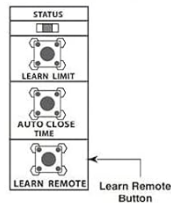
There are nine (9) transmitter DIP switches; each can be placed in three different positions (+, 0, -). **DO NOT** set all the switches in the same position, such as all + all 0, or all -. Once the DIP switches have been set to a personal code, replace front cover.



WARNING: No other adjustments should be made inside the transmitter.

3. "Teach" the New Code to Control Board Memory

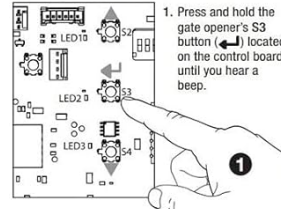
- Press LEARN REMOTE BUTTON for 1 second on the Control board then release.
- Press transmitter button, the status led flashes once.
- The new code is stored in control board memory.



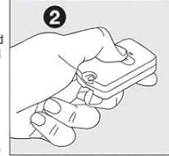
4. Delete transmitter code from control board memory

Press and hold LEARN REMOTE BUTTON on control board until STATUS led goes off (about 3 seconds), the code is deleted.

Programming the FM134 and FM135 Remote to Mighty Mule MM371, MM372, MM571 or MM572 Automatic Gate Openers



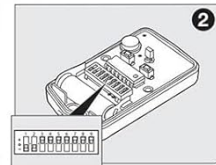
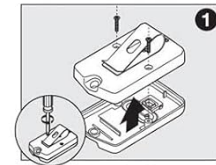
- Press and hold the gate opener's S3 button (located on the control board until you hear a beep.



- Press and hold the desired button on the remote (until you hear a beep) to complete programming process. The remote is now programmed to the gate opener.

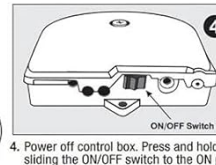
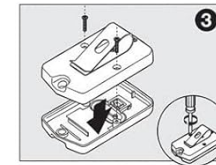
NOTE: To program any subsequent FM134 or FM135 remotes after the first, simply adjust the dip switch pattern to match the already programmed remote. An infinite number of the transmitters may be programmed in this manner.

Programming the FM134 and FM135 Remote to Mighty Mule MM271 or MM272 Automatic Gate Openers



- Use small screwdriver to move switches to random positions. If you have more than one transmitter, set them all with the same code.

- Remove back cover of the opener remote.



NOTE: To program any subsequent FM134 or FM135 remotes after the first, simply adjust the dip switch pattern to match the already programmed remote. An infinite number of the transmitters may be programmed in this manner.

- Replace and secure back cover of the opener remote.

- Power off control box. Press and hold a transmitter button while sliding the ON/OFF switch to the ON position. Continue to hold the selected transmitter button for 8-10 seconds. You will hear a single or a series of beeps, followed by a pause then a single beep. Release transmitter's button. Your personal code is now programmed to that button.

NOTE: The process for programming any wireless accessory in the same process as erasing that accessory. There is no indication that the accessory has been programmed or erased. Make sure to test the accessory before programming, because you may unintentionally erase it.

Image: A visual guide showing the steps for setting your personal transmitter code and programming the remote for various Mighty Mule gate opener models.

Setting Your Personal Transmitter Code

1. Remove the Transmitter Cover:

On the back of the transmitter, use a small Phillips head screwdriver to remove the two screws. With the front cover removed, the battery and the DIP switches will be exposed. To set a new code, use a small screwdriver to move the switches.

2. Set the Transmitter DIP Switches:

There are nine (9) transmitter DIP switches; each can be placed in three different positions (+, 0, -) **DO NOT** set all the switches in the same position, such as all + or all 0 or all -. Once the DIP switches have been set to a personal code, replace the front cover.

WARNING: No other adjustments should be made inside the transmitter.

3. "Teach" the New Code to Control Board Memory:

- Press the LEARN REMOTE BUTTON for 1 second on the control board, then release.
- Press the transmitter button; the status LED flashes once.
- The new code is stored in the control board memory.

4. Delete Transmitter Code from Control Board Memory:

Press and hold the LEARN REMOTE BUTTON on the control board until the STATUS LED goes off (about 3 seconds). The code is deleted.

Programming for FM134 and FM135 Remotes to Mighty Mule MM371, MM372, MM571 or MM572 Automatic Gate Openers

1. Press and hold the gate opener's S3 button (located on the control board) until you hear a beep.
2. Press and hold the desired button on the remote until you hear a beep to complete programming. The remote is now programmed to the gate opener.

NOTE: To program any subsequent FM134 or FM135 remotes after the first, simply adjust the DIP switch pattern to match the already programmed remote. An infinite number of transmitters may be programmed in this manner.

Programming for FM134 and FM135 Remotes to Mighty Mule MM271 or MM272 Automatic Gate Openers

1. Remove the back cover of the opener remote.
2. Use a small screwdriver to move switches to random positions. If you have more than one transmitter, set them all with the same codes.
3. Replace and secure the back cover of the opener remote.
4. Power off the control box. Press and hold a transmitter button while sliding the ON/OFF switch to the ON position. Continue to hold the transmitter button for 10-15 seconds until the control board makes a single series of beeps, followed by a pause then a single beep. Release the transmitter's button. Your personal code is now programmed to that button.

NOTE: To program any wireless accessory is the same process as erasing that accessory. There is no indication that the accessory has been programmed or erased. Make sure to test the accessory before programming. Mistakes may unintentionally erase it.

OPERATING INSTRUCTIONS

Once programmed, operating your FEITON remote control is simple. Press and hold the single button on the remote for approximately 3 seconds to activate your gate or garage door opener.

STRONG SIGNAL, ABLE TO OPEN THE DOOR REMOTELY

Maximum distance up to 145FT



Image: Illustration demonstrating the remote control's strong signal capability, allowing operation from up to 145 feet away from the gate.

The remote offers a wide signal range, allowing you to open your gate or garage door from distances up to 145 feet, providing convenience and security without needing to exit your vehicle.

CONVENIENT ACCESS TO VEHICLES

Open the door remotely directly in the car,
no need to get out



Image: A hand holding the remote control inside a car, illustrating convenient remote access to a gate without needing to get out of the vehicle.

COMPATIBILITY

The FEITON RB741 FM135 remote control is compatible with a wide range of GTO Mighty Mule Gate Openers. This includes, but is not limited to, the following models:

- MM260
- MM271
- MM360
- MM371W
- MM372W
- MM560
- MM562
- MM571W
- MM572W

- MM600
- MM660
- Model 350
- Model 500
- Model 502
- and other compatible GTO Mighty Mule models.

WIDE APPLICATION & COMPATIBILITY

Compatible with All GTO Mighty Mule Gate Openers, such as MM260, MM271, MM360, MM371W, MM372W, MM560, MM562, MM571W, MM572W, MM600, MM660, Model 350,500,502 etc.



Image: Collage showing the remote control's compatibility with various types of gates, including residential and commercial styles, highlighting its wide application.

MAINTENANCE

The FEITON remote control requires minimal maintenance. Keep the device clean and dry. Avoid exposing it to extreme temperatures or direct sunlight for prolonged periods.

Battery Replacement

The remote control uses a 12V 23A battery. When the signal strength diminishes or the remote stops responding, it

may be time to replace the battery. To replace, follow the steps for "Remove the Transmitter Cover" in the Setup section, replace the old battery with a new 12V 23A battery, and then reassemble the remote.

TROUBLESHOOTING

If you encounter issues with your FEITON remote control, consider the following:

- **Remote Not Responding:**

Ensure the battery is not depleted. Replace it if necessary. Verify that the DIP switch sequence in the remote matches the sequence set on your gate opener's control board. If the switch sequence does not match, the transmitter will not send the correct signal.

- **Reduced Range:**

A weak battery can cause reduced signal range. Replace the battery. Ensure there are no significant obstructions between the remote and the receiver.

- **Programming Issues:**

Carefully re-read and follow the programming steps in the "Setup and Installation" section. Ensure all DIP switches are fully set and not in a middle position. Remember that programming a new accessory might erase previous settings, so test thoroughly.

If problems persist after following these troubleshooting steps, please contact FEITON customer support for assistance.

SPECIFICATIONS

Feature	Detail
Brand	FEITON
Model Number	RB741 FM135 (Garage Door Opener)
Part Number	80005759
Item Weight	4.4 ounces
Product Dimensions	0.1 x 0.1 x 0.1 inches (approx. 2.5 x 1.5 inches for remote body)
Size	3PCS Remote (for the pack)
Included Components	Switch, Visor Clip
Batteries Required?	Yes (12V 23A)
Color	Black
Exterior Finish	Aluminum, Stainless Steel (for clip)
Installation Type	Screw-In (for clip assembly)
UPC	708686975147

WARRANTY AND SUPPORT

For warranty information or technical support, please contact FEITON directly. You can often find contact details on the product packaging or by visiting the official FEITON store on Amazon:

[Visit the FEITON Store](#)

Please have your product model number (RB741 FM135) and ASIN (B0B561FSQM) ready when contacting support.

© 2024 FEITON. All rights reserved.