

[Manuals.plus](#) /

› [GLAKER](#) /

› GLAKER Professional Hair Clipper and Trimmer Kit User Manual

GLAKER GL-K11BI11B

GLAKER Professional Hair Clipper and Trimmer Kit User Manual

Model: GL-K11BI11B

INTRODUCTION

Thank you for choosing the GLAKER Professional Hair Clipper and Trimmer Kit. This all-in-one grooming solution is designed for both home and professional use, offering precision and power for various hair cutting and trimming needs. This manual provides essential information for the safe and effective operation, maintenance, and troubleshooting of your device.

The kit includes a cordless men's clipper, a T-blade hair trimmer, lubricating oil, a neck brush, 15 hair clipper guard attachments (1.5/3/4.5/6/10/13/16/19/22/25 mm and left/right ear guards), 3 hair trimmer guard attachments (1/2/3 mm), a barber cape, a comb, a cleaning brush, and a USB cable.



Image: Overview of the GLAKER Professional Hair Clipper and Trimmer Kit, showcasing both the main clipper and the T-blade trimmer, along with all included accessories such as guide combs, charging cables, oil, cleaning brush, comb, and barber cape.

SAFETY INSTRUCTIONS

- Read all instructions before using the appliance.
- Keep the appliance dry. Do not use near water or in wet conditions.
- Do not immerse the appliance in water or other liquids.
- Keep out of reach of children.
- Always unplug the appliance before cleaning or maintenance.
- Use only the provided charging cable and adapter.
- Do not operate the appliance if it has a damaged cord or plug, or if it is not working properly.
- Avoid contact with moving parts.

COMPONENTS OVERVIEW

The GLAKER Professional Hair Clipper and Trimmer Kit includes the following main components:

- **Main Hair Clipper:** Features a powerful motor (6000+ RPM) and self-sharpening stainless steel blades. Equipped with an LED display for battery level.
- **T-Blade Hair Trimmer:** Compact trimmer for detailing, outlining, and art carving.
- **Guide Combs:**
 - 15 Clipper Guards: 1.5mm, 3mm, 4.5mm, 6mm, 10mm, 13mm, 16mm, 19mm, 22mm, 25mm, and left/right ear guards.
 - 3 Trimmer Guards: 1mm, 2mm, 3mm.
- **Accessories:** Lubricating oil (120ml), neck brush, barber cape, comb, cleaning brush, USB charging cables.



Image: A visual representation of the GLAKER main hair clipper and T-blade trimmer, accompanied by all 15 guide combs for the clipper (ranging from 1.5mm to 25mm, plus ear guards) and 3 guide combs for the trimmer (1mm to 3mm), illustrating the variety of cutting lengths available.

SETUP AND CHARGING

Initial Charging

Before first use, fully charge both the hair clipper and the T-blade trimmer. The main clipper features an LED display that shows the battery percentage. The T-blade trimmer has an indicator light.

1. Connect the USB charging cable to the charging port on the device and plug the other end into a compatible USB power adapter (not included) or a USB port.
2. The main clipper takes approximately 3 hours for a full charge, providing up to 5 hours of runtime.
3. Ensure the device is turned off during charging.

CORDLESS RECHARGEABLE CONVENIENCE



Fast-charging
Technology



Long-lasting
Battery

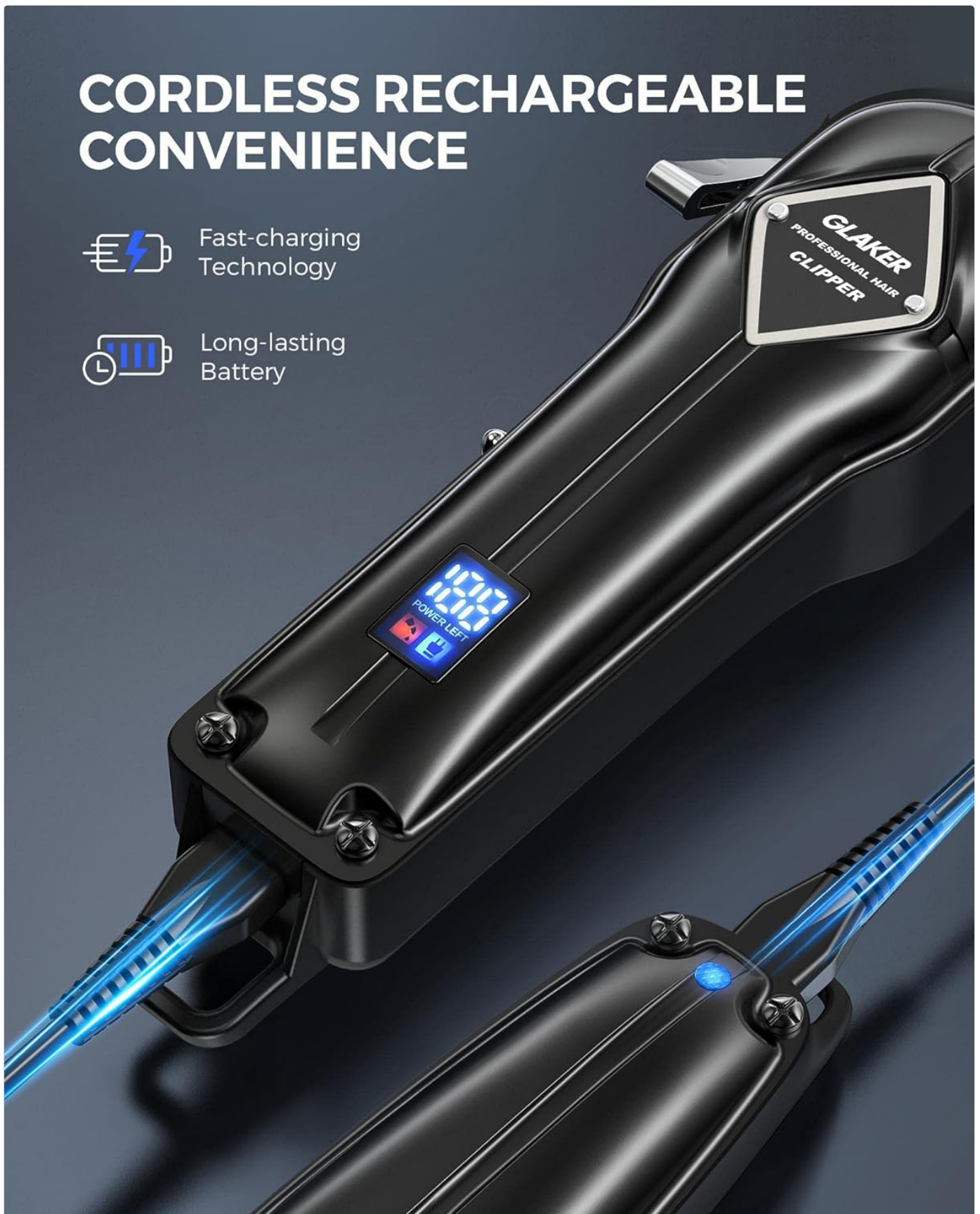


Image: The GLAKER hair clipper connected to a USB charging cable, with its LED display showing the charging status and battery percentage, highlighting its cordless rechargeable convenience.

Attaching Guide Combs

Select the desired guide comb for your preferred hair length. Each comb is marked with its length in millimeters (mm) or inches (").

1. Align the guide comb with the clipper or trimmer blade.

2. Push the comb firmly until it clicks into place.
3. To remove, gently pull the comb away from the blade.

OPERATING INSTRUCTIONS

Before Cutting

1. Ensure the clipper/trimmer is fully charged.
2. Apply a few drops of the provided lubricating oil to the blades before each use. This ensures smooth operation and extends blade life.
3. Adjust the taper lever on the main clipper to your desired setting (0.5mm to 1.7mm) for fine-tuning cutting length without changing guide combs.



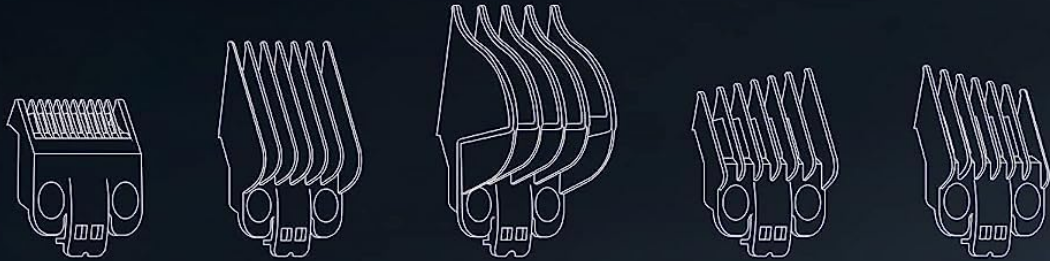
Image: A close-up view demonstrating the process of applying lubricating oil to the blades of the GLAKER hair clipper before use, emphasizing the importance of this step for smooth cutting performance.

Hair Cutting with the Main Clipper

1. Attach the appropriate guide comb.
2. Turn on the clipper using the power switch.
3. Hold the clipper with the blade teeth pointing upwards.
4. Move the clipper against the direction of hair growth, using slow, overlapping strokes.
5. For blending and fading, utilize the taper lever to adjust the cutting length incrementally.

PERFECT FOR FADING & BLENDING

1/16", 1/8", 3/16", 1/4", 3/8", 1/2", 5/8", 3/4", 7/8" & 1"



0.5~1.7
mm

Image: The GLAKER hair clipper highlighting its adjustable taper lever (0.5mm to 1.7mm) and illustrating various guide comb sizes, indicating its suitability for precise fading and blending techniques.

Using the T-Blade Trimmer

The T-blade trimmer is ideal for:

- **Beard Trimming:** For precise lines and shaping.
- **Outlining:** Creating sharp edges around the neckline and ears.

- **Art Carving:** Detailed designs and patterns in hair.

DESIGNED FOR ART CARVING

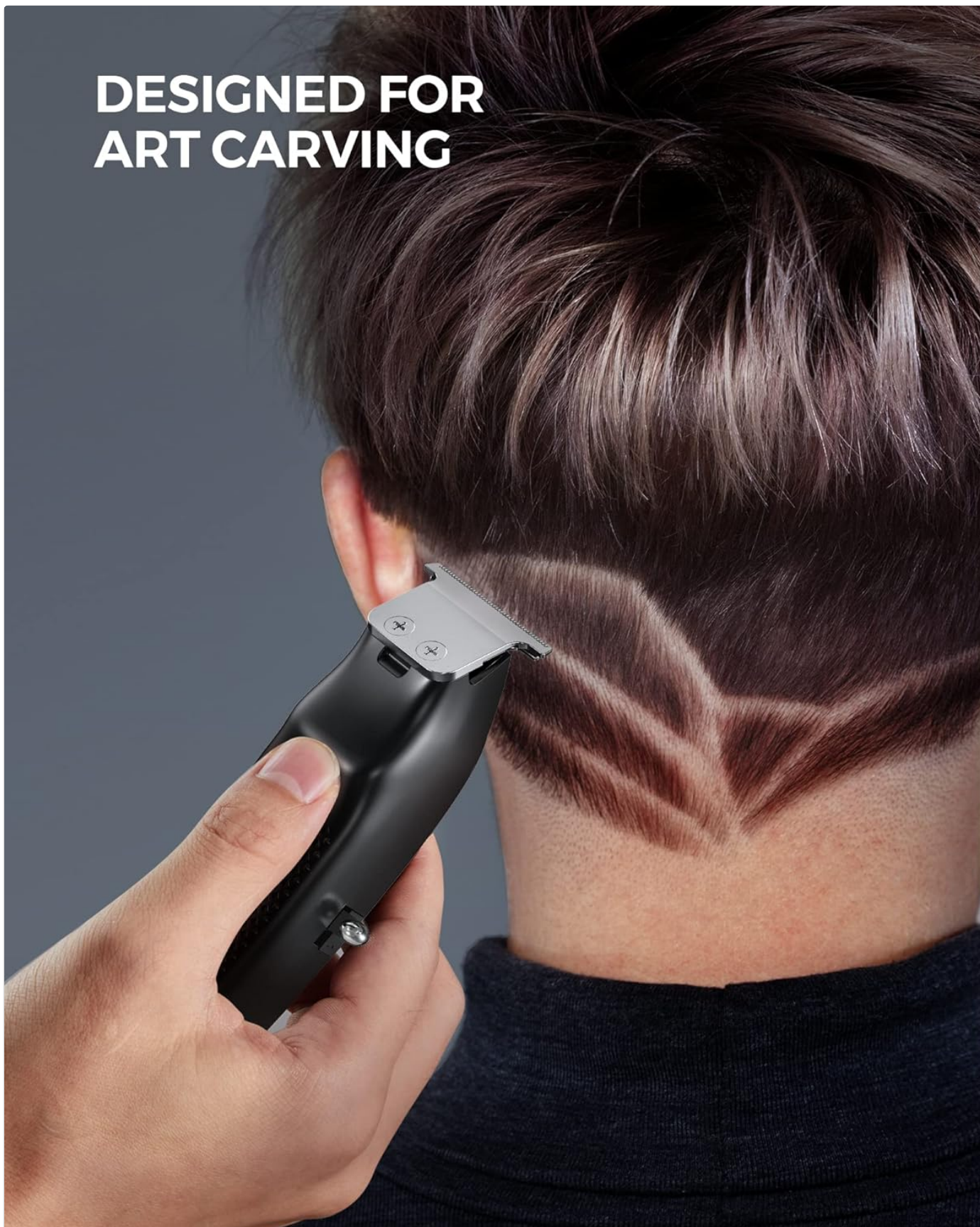


Image: A close-up of the GLAKER T-blade trimmer being used to create intricate designs or "art carving" on the back of a person's head, demonstrating its precision capabilities.



Image: A composite image showing three different uses of GLAKER grooming tools: self-grooming with the main clipper, beard trimming with the T-blade trimmer, and art carving with the T-blade trimmer, highlighting the versatility of the kit for various grooming needs.

MAINTENANCE

Cleaning the Blades

1. After each use, turn off and unplug the clipper/trimmer.
2. Use the cleaning brush to remove any loose hairs from the blades and the area around them.
3. For a more thorough cleaning, the blades can be carefully detached (refer to specific instructions if provided in a physical manual for your model).

Oiling the Blades

Regular oiling is crucial for maintaining blade sharpness and smooth operation.

1. Apply 2-3 drops of the provided lubricating oil across the top of the blades after every few uses, or if the blades feel sluggish.
2. Turn on the clipper/trimmer for a few seconds to allow the oil to distribute evenly.
3. Wipe off any excess oil with a clean cloth.

OFFER SMOOTH & NO SNUG CUTTING

6000 RPM Motor

Included
Oil blade often to
make it sharper

Self-Sharpening
Stainless Steel Blades

Image: An internal view of the GLAKER clipper, highlighting its 6000 RPM motor and self-sharpening stainless steel blades, with a bottle of lubricating oil indicating its importance for maintaining smooth and snag-free cutting performance.

Storage

Store the appliance in a cool, dry place, away from direct sunlight and moisture. Ensure it is clean and oiled before storing for extended periods.

TROUBLESHOOTING

Problem	Possible Cause	Solution
Clipper/Trimmer not turning on.	Low battery; Power switch off.	Charge the device fully; Ensure power switch is in the 'ON' position.
Blades pulling or snagging hair.	Blades are dull or not oiled; Hair buildup in blades.	Apply lubricating oil to blades; Clean blades thoroughly; Consider professional sharpening if blades are dull.
Reduced cutting performance.	Blades need cleaning/oiling; Battery low.	Clean and oil blades; Recharge the device.
Device not charging.	Faulty cable/adaptor; Loose connection.	Check cable and adaptor; Ensure secure connection; Try a different USB port/adaptor.

SPECIFICATIONS

- **Model Number:** GL-K11BI11B (K11S+I3F)
- **Brand:** GLAKER
- **Blade Material:** 440C Stainless Steel
- **Motor Speed:** Over 6000 RPM
- **Noise Level:** Below 60 dB
- **Power Source:** Battery Powered (Lithium-ion)
- **Charging Time:** Approximately 3 hours
- **Runtime:** Up to 5 hours
- **Dimensions (L x W x H):** 6 x 5 x 19 cm (Clipper); 800 grams (Total weight)
- **Included Components:** Cordless rechargeable hair clipper, T-blade hair trimmer, 18 guide combs (15 for clipper, 3 for trimmer), 120ml lubricating oil, neck brush, barber cape, comb, cleaning brush, USB cable.

WARRANTY AND SUPPORT

GLAKER products are manufactured to the highest quality standards. For warranty information, technical support, or any questions regarding your product, please contact GLAKER customer service through the retailer where you purchased the product or visit the official GLAKER website.

Please retain your proof of purchase for warranty claims.