

## Owlet PS04NMBBJ

# Owlet® Dream Duo Smart Baby Monitor User Manual

**MODEL: PS04NMBBJ**

## Introduction

The Owlet Dream Duo Smart Baby Monitor is designed to provide caregivers with a deeper understanding of their infant's safety and well-being. This system combines the FDA-Cleared Dream Sock and the Owlet Cam 2 to offer real-time health readings, timely notifications, and high-definition video monitoring.

The Dream Sock tracks your baby's pulse rate and oxygen levels while they sleep, providing peace of mind. The Owlet Cam 2 allows you to view your baby in 1080p HD video, with features like two-way audio, background audio, and room temperature/humidity monitoring.



Figure 1: Owlet Dream Duo components and app interface.

## Safety Information

Please read and understand all safety warnings and instructions before using the Owlet Dream Duo. Failure to follow these guidelines could result in injury or product malfunction.

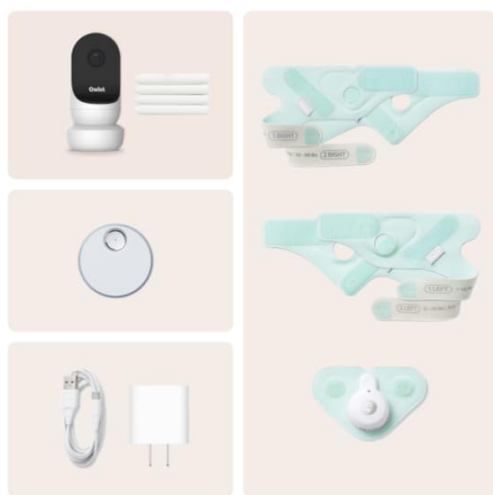
- **U.S. Version Only:** This version of the Dream Duo is intended for use only within the United States. Functionality may be limited or unavailable outside the U.S.
- **Intended Use:** The FDA-Cleared Dream Sock is intended for use with healthy infants between 1-18 months, weighing 6-30 lbs. Consult a healthcare professional if you have concerns about your infant's health.
- **Cable Safety:** Ensure all power cords and cables are securely managed and kept out of reach of your child to prevent strangulation hazards. Utilize the provided cable guards and mounting kit for the Owlet Cam 2.
- **Wi-Fi Connection:** The system operates on 2.4 GHz Wi-Fi. Ensure a stable and secure Wi-Fi connection for

optimal performance and data security.

## What's Included

The Owlet Dream Duo package includes the following components:

- Owlet Cam 2
- Dream Sock
- 4 Fabric Socks (fitting babies 0-18 months, 5-30 lbs)
- Base Station
- Cam Mounting Kit
- Access to the Dream App with Predictive Sleep Technology & 7 day video clip history



### What's Included

Everything you'll get when your Dream Duo w/ Cam 2 arrives.

Owlet Cam 2

Dream Sock Sensor

4 Fabric Socks  
(fitting babies 0-18 months, 5-30 lbs)

Base Station

Cam Mounting Kit

Access to the Dream App with Predictive Sleep Technology & all-new video clips.

Figure 2: All components included in the Owlet Dream Duo package.

## Setup Instructions

### 1. Dream Sock Setup

1. **Charge the Dream Sock Sensor:** Place the sensor into the charging port on the Base Station. The Base Station will indicate charging status.
2. **Select the Correct Fabric Sock:** Choose the appropriate fabric sock size (0-18 months, 5-30 lbs) for your baby's foot. The kit includes options for both left and right feet.
3. **Insert Sensor into Fabric Sock:** Carefully insert the charged Dream Sock sensor into the designated pocket within the fabric sock. Ensure it is securely placed.
4. **Place on Baby's Foot:** Gently place the fabric sock with the sensor onto your baby's foot, ensuring the sensor is positioned correctly behind the pinky toe. Secure the Velcro straps for a snug but comfortable fit.
5. **Position the Base Station:** Place the Base Station within range of your baby's sleeping area, ideally on a flat surface near the crib.

# Dream Sock monitors baby's pulse rate, oxygen, and sleep trends in *real-time*.

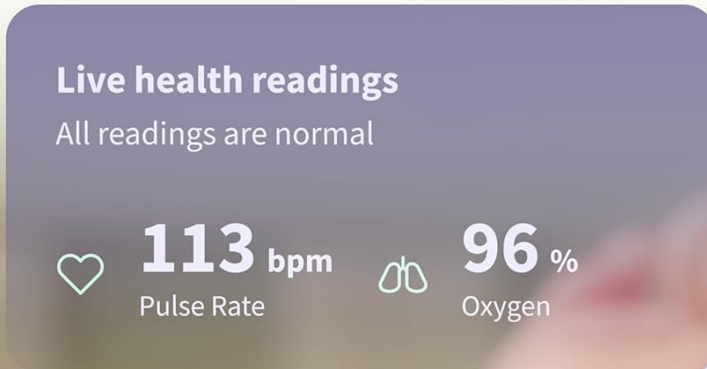


Figure 3: Proper placement of the Dream Sock on a baby's foot.

## 2. Owlet Cam 2 Setup

1. **Mount the Camera:** Use the provided Cam Mounting Kit to securely attach the Owlet Cam 2 to a wall or flat surface with a clear view of your baby's crib. Ensure the camera is positioned at a safe distance from the crib to prevent accidental contact.
2. **Manage Cables:** Route the power cable along the wall using the included cable guards to keep it out of reach of your child.
3. **Power On:** Plug the Owlet Cam 2 into a power outlet.
4. **Connect to Wi-Fi:** The Owlet Cam 2 requires a 2.4 GHz Wi-Fi connection. Follow the in-app instructions to connect the camera to your home network.

# See, Hear & Know Baby is Okay with the Owlet Dream Duo 2 which combines Dream Sock and Owlet Cam.

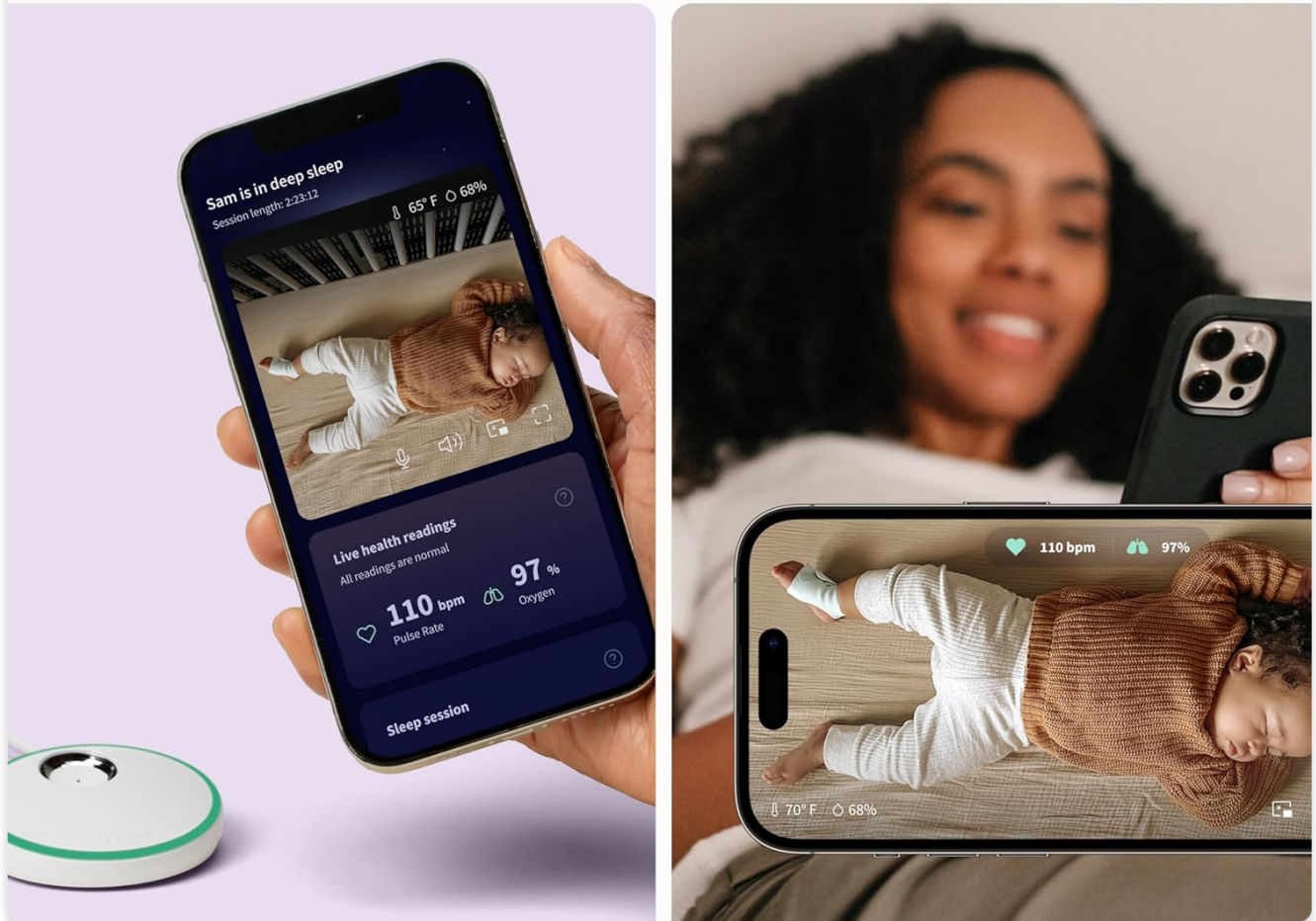


Figure 4: Owlet Cam 2 mounted above a crib for optimal viewing.

## Operating Instructions

The Owlet Dream Duo is controlled and monitored primarily through the Owlet Dream App, available for iOS (14+) and Android (7+) devices.

### 1. Owlet Dream App Features

- **Live Health Readings:** View your baby's real-time pulse rate and oxygen levels directly in the app.
- **Sleep Trends:** Track your baby's sleep patterns, including wakings and sleep quality, over time. The app provides historical data and insights to help understand sleep habits.
- **1080p HD Video:** Access a live video feed of your baby from the Owlet Cam 2.
- **Two-Way Audio:** Speak to your baby through the camera using the app's two-way audio feature.



- **Background Audio:** Listen to your baby's sounds even when the app is running in the background on your device.
- **Room Environment Monitoring:** The Owlet Cam 2 monitors room temperature and humidity, providing these readings in the app to help ensure a comfortable sleeping environment.

## View sleep patterns, and historical health readings & trends *in the App.*

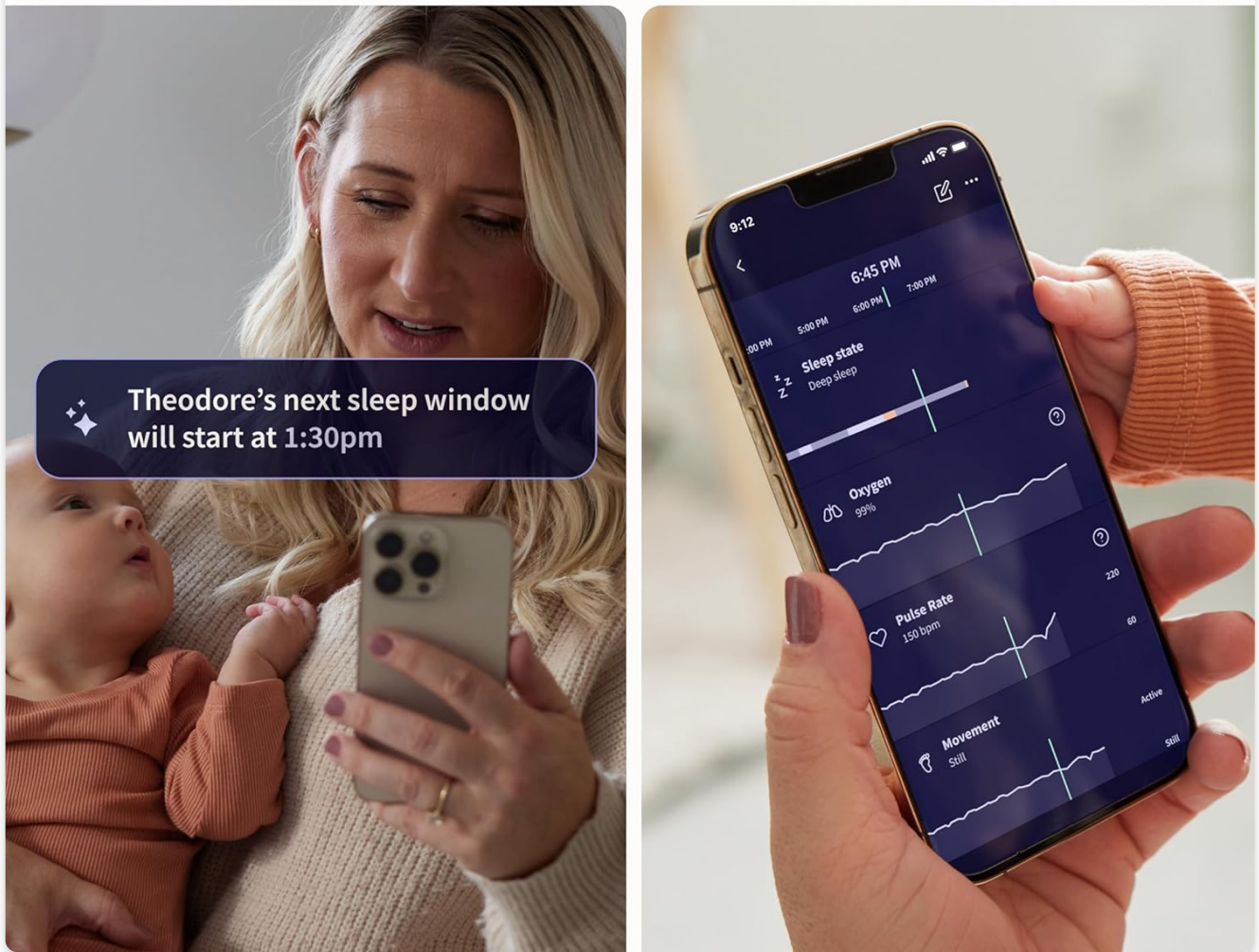


Figure 5: Owlet Dream App interface for tracking sleep and health trends.

## 2. Notifications and Alerts

The Dream Duo is designed to notify you if your infant's health readings fall outside preset ranges or if the sock is not properly placed.

- **Base Station Alerts:** The included Base Station provides real-time notifications through lights and sounds. Different colors and sounds indicate specific alerts (e.g., low oxygen, high pulse rate, sock displacement).
- **In-App Notifications:** Receive push notifications on your smartphone via the Owlet Dream App for critical alerts, allowing you to respond promptly.

Receive *light and sound alerts* on the parent Base Station when Baby's readings fall outside preset range.



Figure 6: Examples of Base Station and in-app alerts.

## Maintenance

Regular cleaning and care will ensure the longevity and optimal performance of your Owlet Dream Duo.

- **Dream Sock Fabric:** The fabric socks can be hand-washed with mild soap and water. Allow them to air dry completely before re-use.
- **Dream Sock Sensor:** Gently clean the sensor with a soft, damp cloth. For more thorough cleaning, a soft toothbrush with mild soap can be used, as indicated in the app's cleaning instructions. Ensure the sensor is completely dry before reattaching to the fabric sock or charging.
- **Owlet Cam 2 and Base Station:** Wipe the camera and Base Station surfaces with a dry, soft cloth. Avoid using abrasive cleaners or submerging any electronic components in water.

## Troubleshooting

If you encounter issues with your Owlet Dream Duo, consider the following common solutions:

- **Connectivity Issues:** Ensure your Wi-Fi network is 2.4 GHz. If using a mesh Wi-Fi system, some users may experience intermittent connectivity. Try restarting your router and the Owlet devices.
- **Sock Placement Alerts:** If the Base Station or app alerts you about improper sock placement, re-adjust the sock on your baby's foot to ensure a snug fit and correct sensor positioning.
- **Battery Life:** The Dream Sock sensor requires regular charging. Ensure it is fully charged before each use, especially for overnight monitoring.
- **App Functionality:** If the app is not displaying readings or behaving unexpectedly, try closing and reopening the app, restarting your smartphone, or reinstalling the app.

## Specifications

Feature	Detail
Brand	Owlet
Model Number	PS04NMBBJ
Material	Spandex, Plastic
Color	Mint
Compatible Devices	iOS OS 14+, Android OS 7+, 2.4 Ghz Wifi
Product Dimensions	2.4"L x 2.4"W x 4.4"H
Item Weight	2.1 Pounds
Sensor Type	Temperature, Wearable
Battery Type	Lithium-Ion (included)
UPC	850038861056
Country/Region of Origin	Thailand

## Warranty and Support

The Owlet Dream Duo comes with a 90-day refund/replacement return policy from the date of purchase.

For detailed instructions, troubleshooting, and further support, please refer to the official User Guide:



[Download Official User Guide \(PDF\)](#)

You can also visit the official Owlet store for more information and product updates:

[Visit Owlet Brand Store](#)