

EVTSCAN EVTSCANch10arofgq

EVTSCAN 2-inch Analog Indoor Thermometer Hygrometer

MODEL: EVTSCANch10AROFGQ

Introduction

This manual provides instructions for the EVTSCAN 2-inch Analog Indoor Thermometer Hygrometer. This device is designed to accurately measure both temperature and humidity in various indoor environments. It operates without batteries, offering a reliable and long-lasting solution for environmental monitoring.

Features

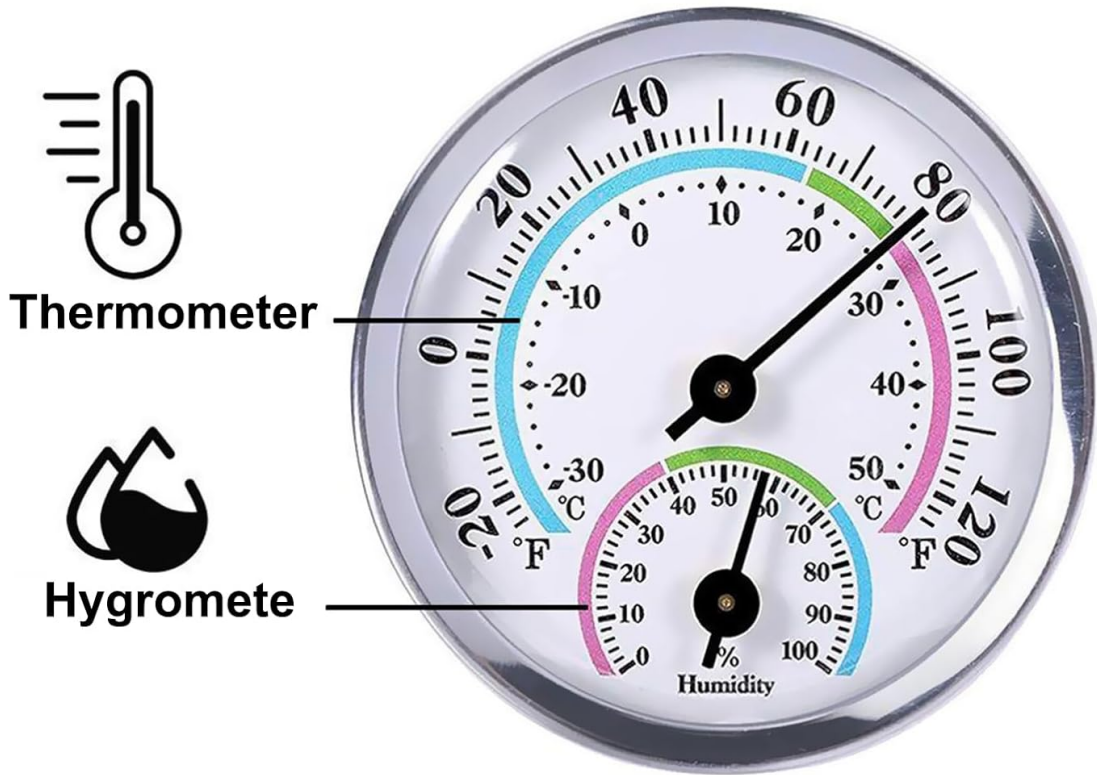
- **2-in-1 Functionality:** Measures both temperature and humidity.
- **Easy to Read:** Clear dial with distinct graduations for quick and accurate readings.
- **Compact and Portable:** Small and lightweight design for easy placement and relocation.
- **Battery-Free Operation:** No batteries required, ensuring a longer lifespan and maintenance-free use.
- **Wide Application:** Suitable for greenhouses, warehouses, homes, offices, incubators, and wine cellars.

Product Overview

The EVTSCAN thermometer hygrometer features a clear analog display with two pointers for temperature and humidity. The device is housed in an aluminum casing with ventilation slots for accurate readings and includes a mounting hole on the back for wall installation.

2-IN-1 DESIGN

Mini indoor thermometer hygrometer is a two in one function that can measure both temperature and humidity, very practical.



Hygromete

Cold

Comfortable

Hot

Thermometer

Cold

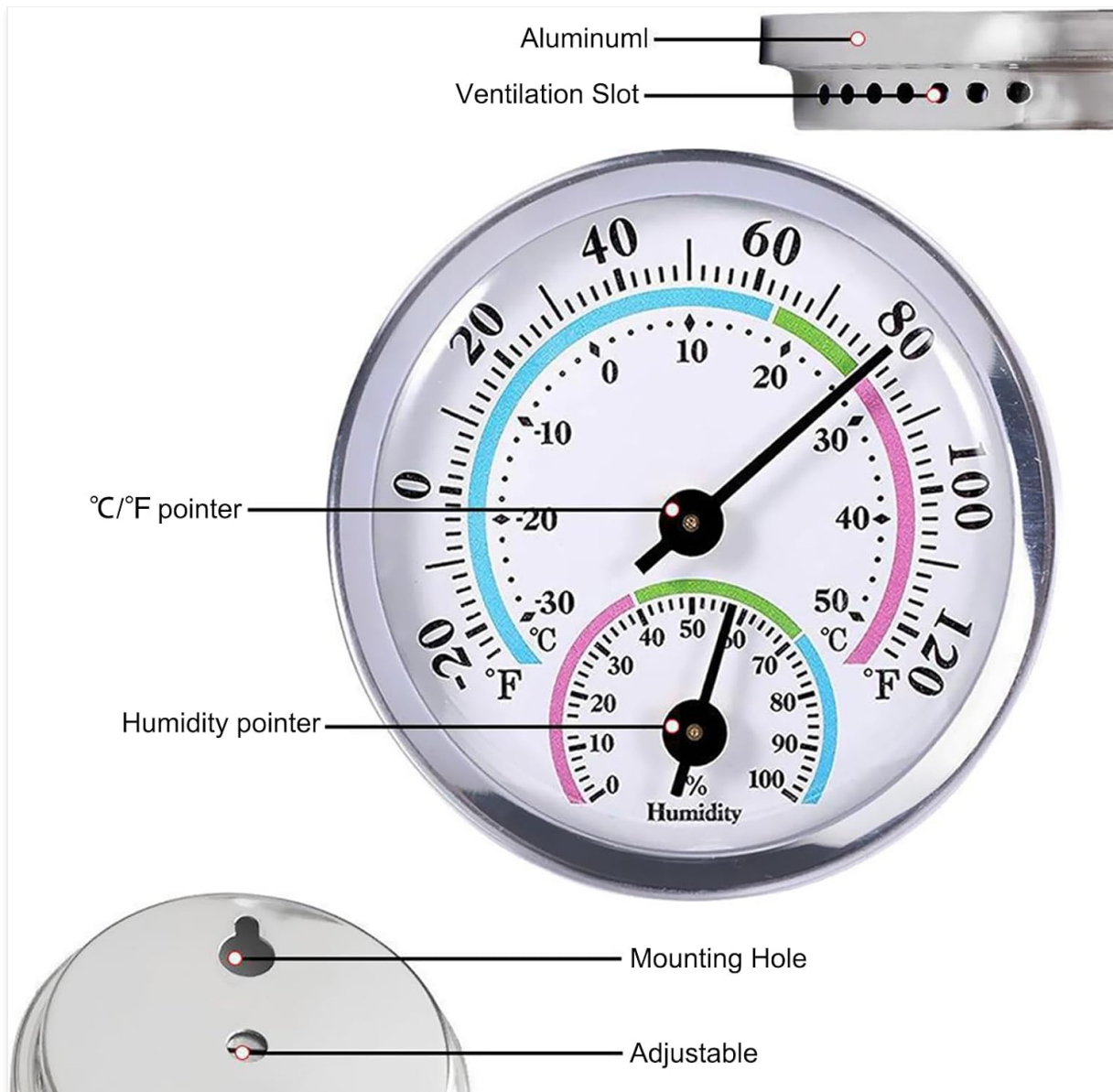
Comfortable

Hot

This image illustrates the 2-in-1 design, highlighting the thermometer and hygrometer sections on the dial for easy identification of readings.

Setup

1. **Unpacking:** Carefully remove the thermometer hygrometer from its packaging.
2. **Placement:** Choose a suitable indoor location away from direct sunlight, drafts, or heat sources that could affect readings.
3. **Mounting:** Use the integrated mounting hole on the back of the device to hang it on a wall or other vertical surface. Ensure it is securely fastened.



This image displays the rear of the device, showing the circular mounting hole for wall installation and the ventilation slots along the side.

Operation

The EVTSCAN thermometer hygrometer operates automatically once placed in its desired location. No manual adjustments or power sources are required.

- **Reading Temperature:** The larger pointer indicates the temperature. The outer scale displays temperature in both Celsius (C) and Fahrenheit (F).
- **Reading Humidity:** The smaller pointer indicates the relative humidity. The inner scale displays humidity as a percentage (%).
- **Interpretation:** Allow the device approximately 30 minutes to stabilize after placement to ensure accurate readings.

Maintenance

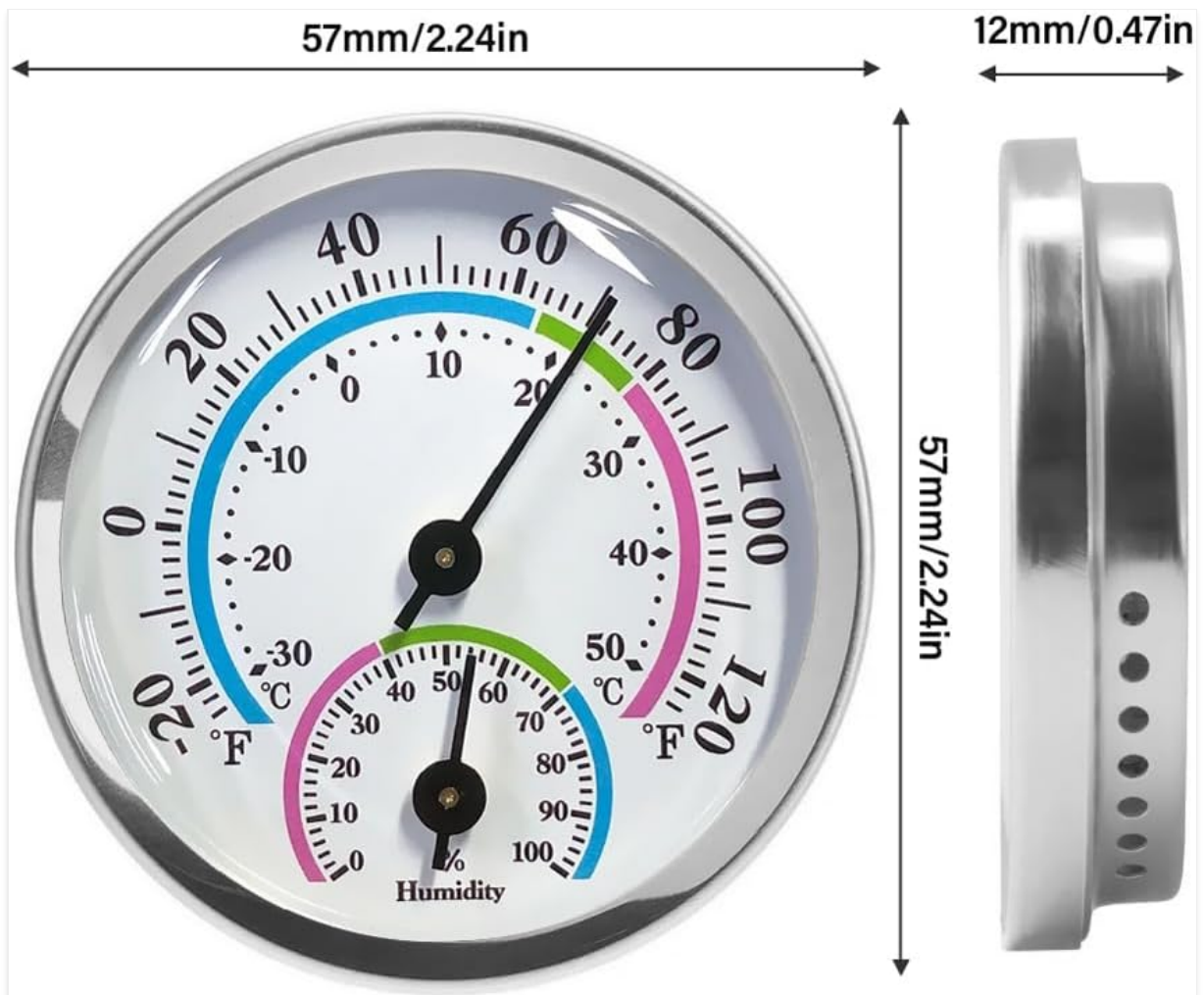
- **Cleaning:** Wipe the device with a soft, dry cloth. Do not use abrasive cleaners or immerse in water.
- **Handling:** Avoid severe vibrations or impacts to prevent damage to the internal mechanisms.
- **Disassembly:** Do not attempt to disassemble the device yourself, as this may void any potential warranty and cause irreparable damage.

Troubleshooting

Problem	Possible Cause	Solution
Inaccurate Readings	Improper placement (direct sunlight, drafts, heat sources) or recent relocation.	Relocate the device to a stable environment and allow 30 minutes for stabilization.
No Movement of Pointers	Extreme environmental conditions or internal damage.	Ensure the device is within its operating range. If the issue persists after checking placement, contact customer support.

Specifications

Specification	Detail
Type	Mini Indoor Thermometer Hygrometer
Material	Aluminum
Color	Silver
Temperature Scale	Celsius and Fahrenheit
Temperature Range	-20 °C to 50 °C (-15 °F to 100 °F)
Humidity Range	0% RH to 100% RH
Diameter	2 inches (approx. 57mm)
Thickness	0.5 inches (approx. 12mm)
Mounting	Wall mount
Power Source	No batteries required
Model Number	EVTSCANch10arofgq



This image provides a visual representation of the device's dimensions, indicating a diameter of 57mm (2.24in) and a thickness of 12mm (0.47in).

Safety Information

- Keep the device out of reach of children and pets.
- Do not expose the device to extreme temperatures or humidity levels outside its specified operating range.
- Avoid placing the device near strong magnetic fields.

Warranty and Support

For warranty information or technical support, please refer to the retailer's return policy or contact EVTSCAN customer service through the official channels provided at the point of purchase. Please retain your proof of purchase for any warranty claims.