

Byron DBW-23061

Byron DBW-23061 Classic Wired/Wireless Doorbell Chime Instruction Manual

Model: DBW-23061

1. INTRODUCTION

Thank you for purchasing the Byron DBW-23061 Classic Doorbell Chime. This chime offers a traditional 'ding-dong' melody at 85 dB and can be configured for either wired or wireless operation. This manual provides essential information for the safe and correct installation, operation, and maintenance of your new doorbell chime.



Figure 1: Front view of the Byron DBW-23061 Doorbell Chime. The chime is white with a black semi-circular opening on the side.

2. SAFETY INFORMATION

- Read all instructions carefully before installation and use.

- Disconnect power at the main circuit breaker before performing any wired installation or maintenance.
- Ensure all electrical connections comply with local electrical codes.
- Do not expose the chime unit to water or excessive moisture. This product is designed for indoor use only.
- Keep batteries out of reach of children. Dispose of used batteries responsibly.
- Only use specified power sources (transformer for wired, 9V battery for wireless).

3. PACKAGE CONTENTS

Verify that all items are present in the package:

- Byron DBW-23061 Chime Unit
- Instruction Manual

Note: A transformer for wired installation and a 9V (6LR61) battery for wireless operation are **not included** and must be purchased separately.

4. PRODUCT FEATURES

- Traditional 'ding-dong' melody.
- 85 dB sound level for clear audibility.
- Supports both wired and wireless installation.
- Compatible with Byron doorbell buttons from the same range.
- Wireless communication range of up to 30 meters in open field conditions.
- Easy installation.

5. SETUP AND INSTALLATION

5.1. Wired Installation

1. **Prepare Power:** Ensure the power supply to your existing doorbell system is turned off at the main circuit breaker.
2. **Mount the Chime:** Select a suitable indoor location for the chime unit. Use appropriate screws and wall plugs (not included) to securely mount the chime to the wall. The back panel of the chime has mounting holes.



Figure 2: Back view of the Byron DBW-23061 Chime, showing mounting points and the battery compartment.

3. **Connect Wiring:** Connect the two wires from your doorbell button and transformer (not included) to the designated terminals on the chime unit. Refer to the wiring diagram provided with your transformer or existing doorbell system for correct polarity, if applicable.
4. **Secure Chime:** Once wired, ensure the chime unit is securely closed and mounted.
5. **Restore Power:** Turn the power back on at the main circuit breaker.
6. **Test:** Press your doorbell button to test the chime's operation.

5.2. Wireless Installation

1. **Insert Battery:** Open the battery compartment on the back of the chime unit (refer to Figure 2). Insert one 9V (6LR61) battery (not included), ensuring correct polarity. Close the battery compartment securely.
2. **Mount the Chime:** Select a suitable indoor location for the chime unit. Use appropriate screws and wall plugs (not included) to securely mount the chime to the wall.
3. **Pair with Doorbell Button:** Follow the pairing instructions provided with your Byron wireless doorbell button (sold separately) to connect it with the DBW-23061 chime.
4. **Test:** Press the wireless doorbell button to test the chime's operation.

6. OPERATION

Once installed and powered, the Byron DBW-23061 chime will sound its traditional 'ding-dong' melody when the connected doorbell button is pressed. The 85 dB volume ensures clear audibility within your home.



Figure 3: Angled front view of the Byron DBW-23061 Doorbell Chime.

7. MAINTENANCE

- **Cleaning:** Clean the chime unit with a soft, dry cloth. Do not use abrasive cleaners or solvents.
- **Battery Replacement (Wireless Mode):** If the chime's sound becomes weak or stops functioning in wireless mode, replace the 9V battery. Open the battery compartment on the back of the unit, remove the old battery, and insert a new 9V (6LR61) battery, observing polarity.
- **Inspection:** Periodically check wired connections for any signs of wear or damage.

8. TROUBLESHOOTING

| Problem | Possible Cause | Solution |
|---------------------------------|---|--|
| Chime does not sound (Wired) | No power; loose wiring; faulty transformer or doorbell button. | Check power supply at circuit breaker. Verify all wired connections are secure. Test transformer and doorbell button. |
| Chime does not sound (Wireless) | Dead or incorrectly inserted battery; chime not paired; doorbell button out of range. | Replace 9V battery, ensuring correct polarity. Re-pair chime with doorbell button. Reduce distance between chime and button. |

| Problem | Possible Cause | Solution |
|-------------------------|---|--|
| Weak or distorted sound | Low battery (wireless); internal component issue. | Replace 9V battery. If problem persists, contact customer support. |
| Short wireless range | Obstructions (walls, metal objects); interference; low battery. | Relocate chime or doorbell button to minimize obstructions. Replace battery. |

9. SPECIFICATIONS

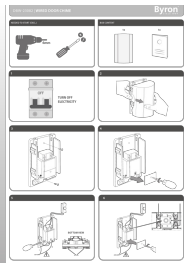
- **Model:** DBW-23061
- **Manufacturer:** Byron
- **Product Dimensions (L x W x H):** 3.8 x 8.2 x 12 cm
- **Weight:** 209 grams
- **Color:** White
- **Material:** Plastic
- **Power Type:** Electricity (wired) or Battery (wireless)
- **Wired Voltage:** 12 Volts (via external transformer, not included)
- **Wireless Battery:** 1 x 9V (6LR61) battery (not included)
- **Sound Level:** 85 dB
- **Wireless Range:** Up to 30 meters (open field)
- **Indoor/Outdoor Use:** Indoor
- **Special Features:** Easy Installation
- **Country of Origin:** China

10. WARRANTY AND SUPPORT

For warranty information or technical support, please refer to the documentation provided at the time of purchase or visit the official Byron website. Keep your proof of purchase for any warranty claims.

Online Support: www.byron.com/support (Example link, please refer to actual product documentation for correct URL)

Related Documents - DBW-23061



[Byron DBW-23082 Wired Door Chime Installation Guide](#)

Step-by-step installation instructions for the Byron DBW-23082 Wired Door Chime, including safety warnings and compatibility information.



[Byron DBY-21132/DB132 Plug-In Wireless Doorbell Set - Installation and User Guide](#)

Comprehensive guide for setting up, installing, and troubleshooting the Byron DBY-21132/DB132 Plug-In Wireless Doorbell Set. Includes features, pairing instructions, and technical specifications.



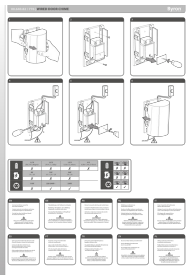
[Byron DBY-22324 B324 Plug-in Wireless Doorbell Set: Installation and Pairing Guide](#)

Comprehensive guide for setting up, installing, and pairing the Byron DBY-22324 B324 plug-in wireless doorbell set. Includes features, troubleshooting, and technical specifications.



[Byron DBY-22321 Wireless Doorbell Set: Installation and Features Guide](#)

Comprehensive guide for the Byron DBY-22321 Wireless Doorbell Set, covering setup, installation, features, and troubleshooting. Learn how to pair multiple chimes and ensure optimal performance.



[Byron 776 Wired Door Chime Installation and Safety Guide](#)

Comprehensive guide for installing and safely operating the Byron 776 wired door chime, including technical specifications, compatibility information, and important safety warnings.



[Byron DBY-22316 | B316 Wireless Doorbell Set User Manual](#)

Comprehensive guide for the Byron DBY-22316 and B316 wireless doorbell set, covering setup, installation, features, and troubleshooting. Learn how to pair multiple chimes and ensure optimal performance.

