

Vikeri Vikeri 4K 32MP Trail Camera

Vikeri 4K 32MP Trail Camera User Manual

Model: Vikeri 4K 32MP Trail Camera

Brand: Vikeri

1. INTRODUCTION

Thank you for choosing the Vikeri 4K 32MP Trail Camera. This manual provides detailed instructions for setting up, operating, and maintaining your camera to ensure optimal performance for wildlife monitoring, hunting, and security applications. Please read this manual thoroughly before using the camera.

2. PRODUCT OVERVIEW

The Vikeri 4K 32MP Trail Camera is designed for high-resolution image and video capture in various outdoor environments. Key features include:

- Ultra-High Resolution:** Captures 4K video and 32MP still images.
- Night Vision:** Equipped with 40 no-glow infrared LEDs for clear night recordings up to 80ft.
- Fast Trigger Time:** 0.1-second trigger speed to capture fast-moving subjects.
- Wide Field of View:** 120° wide-angle lens for comprehensive monitoring.
- Durable Design:** IP66 waterproof and dustproof rating, operating in temperatures from -22°F to 158°F.
- Motion Activated:** PIR sensor detects movement up to 80ft during the day and 65ft at night.



Figure 2.1: Vikeri 4K 32MP Trail Camera with a 32GB memory card and four AA batteries.

3. SETUP

1. **Install Batteries:** Open the battery compartment. Insert 4 or 8 AA batteries (not included, unless specified in package) according to the polarity markings. Ensure proper orientation.
2. **Insert SD Card:** Open the camera latch. Locate the SD card slot. Insert a Class 10 or higher SD card (up to 256GB, 32GB included with some models) with the metal contacts facing down until it clicks into place.
3. **Power On:** Switch the camera mode selector from OFF to TEST or ON. In TEST mode, you can access the menu and adjust settings.
4. **Mounting the Camera:**
 - Use the included mounting strap to secure the camera to a tree or pole. Thread the strap through the slots on the back of the camera and tighten.

- Alternatively, use the tripod screw mount on the bottom for a tripod or other mounting accessories.
- Position the camera approximately 3-6 feet (1-2 meters) from the ground, aiming towards the area you wish to monitor.

4. OPERATING INSTRUCTIONS

4.1. Mode Selection

The camera has three main modes:

- **OFF:** Power off the camera.
- **TEST:** Allows you to view the screen, adjust settings, and manually trigger photos/videos. The PIR sensor is active in this mode for testing detection range.
- **ON:** The camera enters monitoring mode. The screen turns off after a few seconds, and the camera will capture photos/videos automatically when motion is detected.

4.2. Menu Settings (in TEST mode)

Use the navigation buttons (UP, DOWN, LEFT, RIGHT, OK, MENU) to navigate and adjust settings.

Setting	Description	Recommended Value
Mode	Select Photo, Video, or Photo+Video.	Photo+Video
Photo Resolution	Set image resolution (e.g., 32MP, 20MP, 16MP).	32MP
Video Resolution	Set video resolution (e.g., 4K, 2.7K, 1080P).	4K
PIR Sensitivity	Adjust motion sensor sensitivity (High, Medium, Low).	Medium
Trigger Interval	Time delay between detections (e.g., 5s, 10s, 30s).	10 Seconds
Time Lapse	Capture images at set intervals regardless of motion.	Off
Date & Time	Set current date and time.	Current

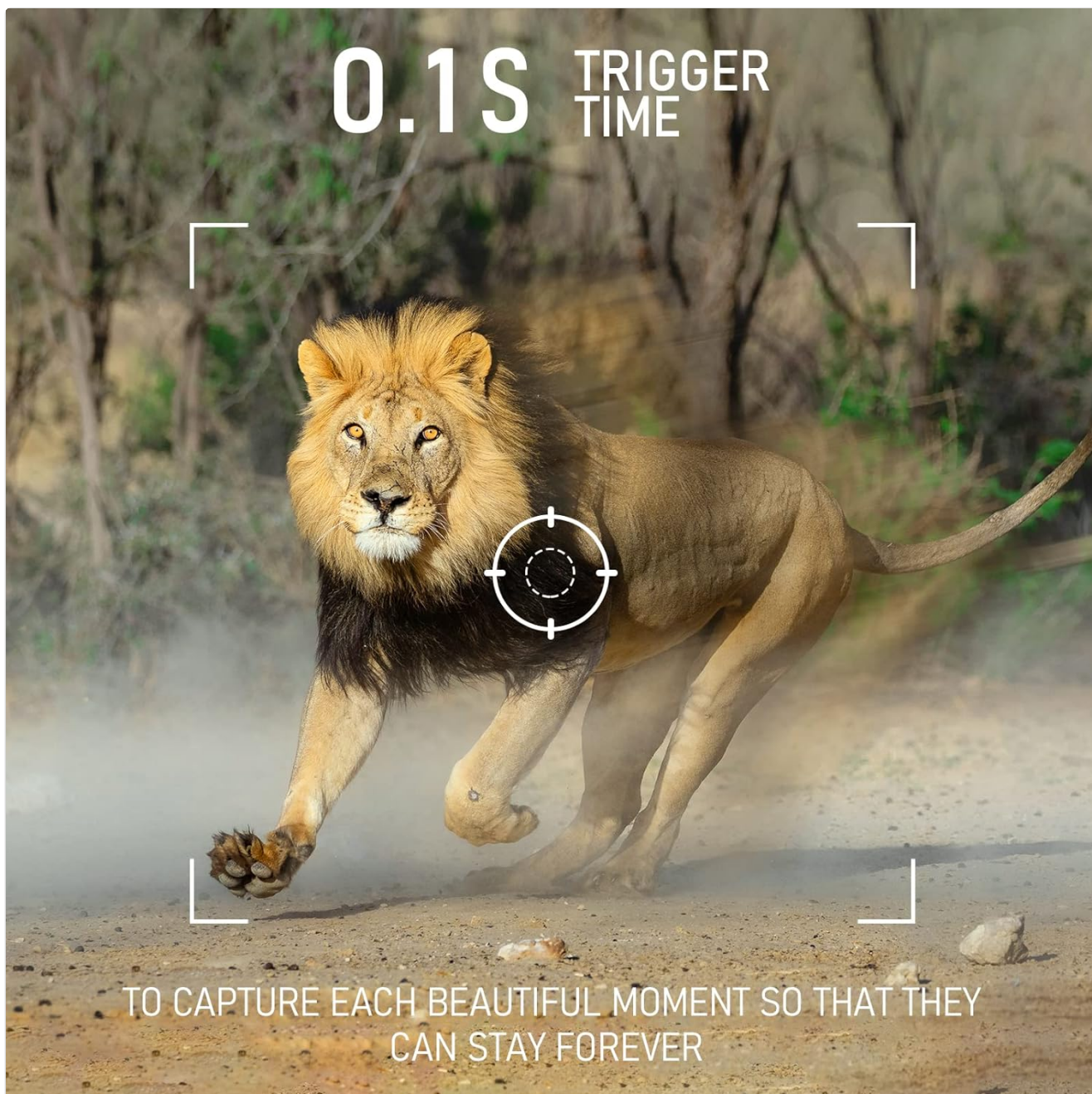


Figure 4.1: The camera's 0.1-second trigger time ensures capture of fast-moving subjects.

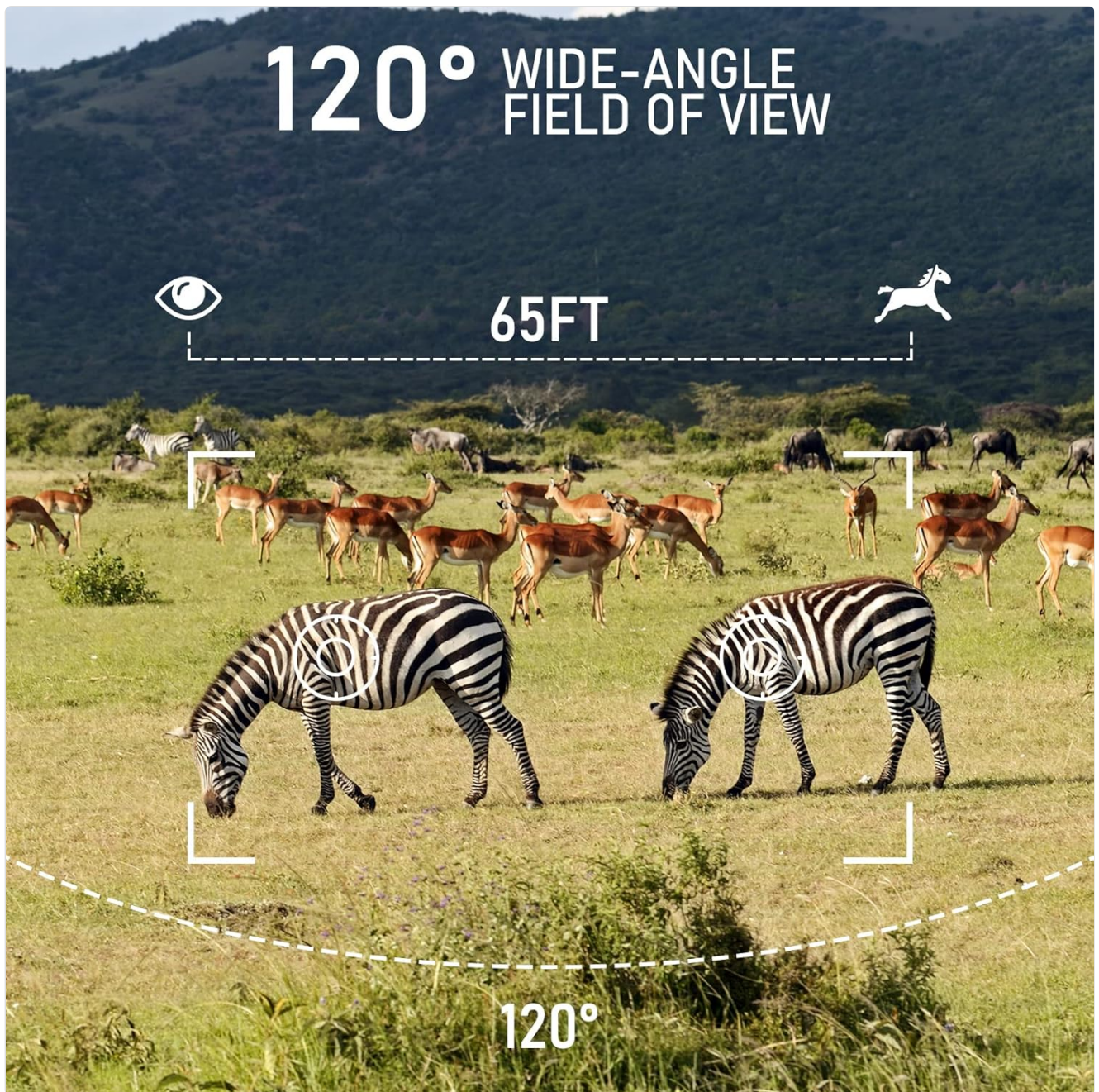


Figure 4.2: The 120° wide-angle lens captures a broad field of view, detecting motion up to 65ft.

IP66 ICE&SNOW RAIN DUST



ICE&SNOW



RAIN



DUST



Figure 4.3: The IP66 rating ensures the camera is protected against rain, dust, ice, and snow.

80 FT NIGHT VISION
CAPABILITY



40 HIGH-PERFORMANCE NO GLOW 940NM LEDS

Figure 4.4: Night vision with 40 no-glow 940nm LEDs provides clear images up to 80ft in darkness.

32MP ULTRA-CLEAR
IMAGE
4K VIDEO

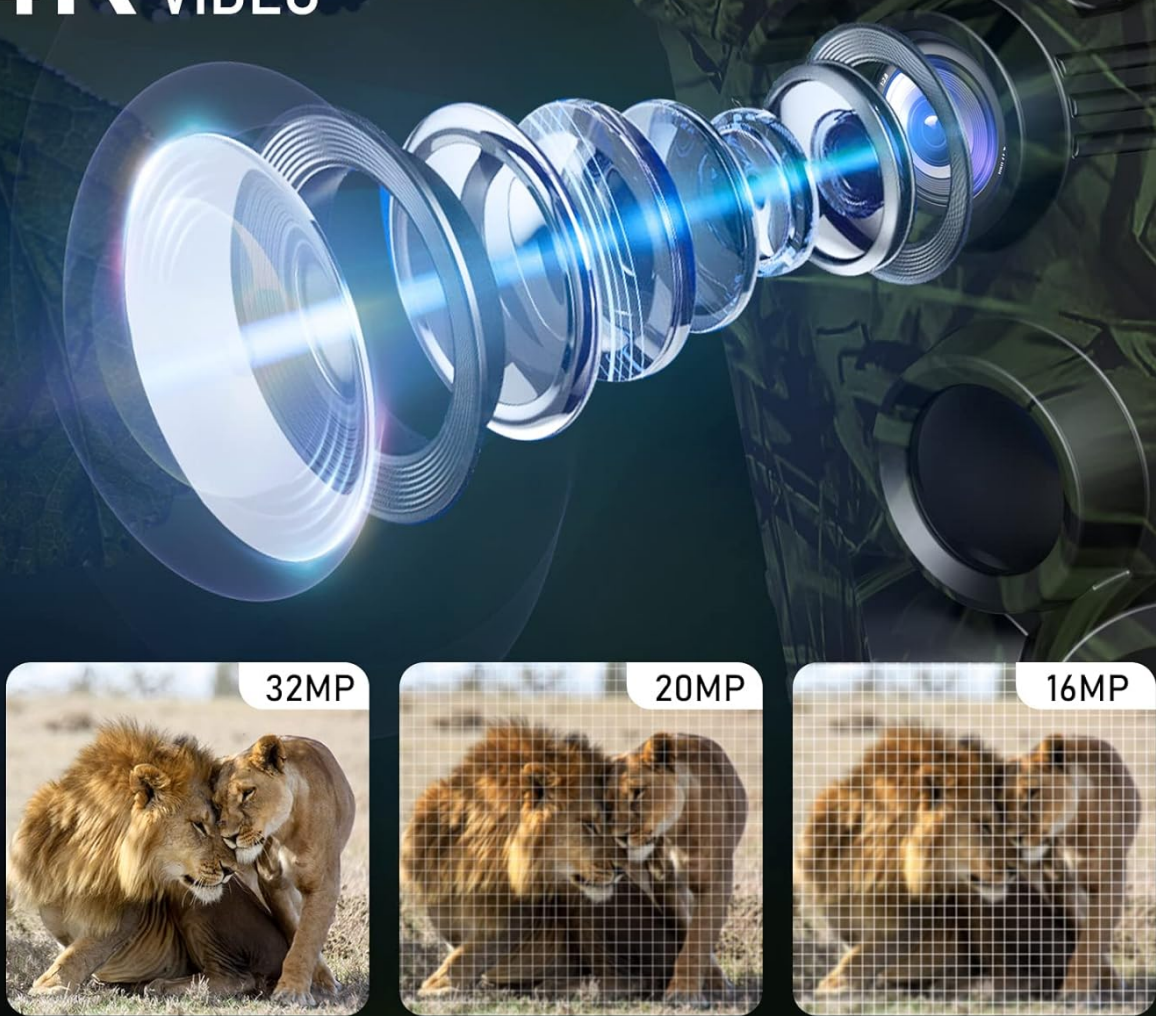


Figure 4.5: The camera supports ultra-clear 32MP images and 4K video resolution.



Figure 4.6: Example of a 32MP image and a frame from a 4K HD video captured by the camera.

5. MAINTENANCE

- **Cleaning:** Use a soft, dry cloth to clean the camera lens and PIR sensor window. Do not use abrasive cleaners or solvents.
- **Battery Replacement:** Replace all batteries at the same time. Do not mix old and new batteries or different types of batteries.
- **SD Card Management:** Format the SD card regularly (at least once a month) using the camera's menu to ensure optimal performance and prevent data corruption.
- **Storage:** When not in use for extended periods, remove batteries and store the camera in a cool, dry place.

6. TROUBLESHOOTING

Problem	Possible Cause	Solution
---------	----------------	----------

Problem	Possible Cause	Solution
Camera not powering on	Low or dead batteries; incorrect battery polarity; faulty SD card.	Replace batteries; check polarity; remove SD card and try powering on.
Poor image/video quality	Dirty lens; low light conditions; incorrect resolution settings.	Clean lens; ensure sufficient light or use night vision; adjust resolution settings.
Camera not triggering	PIR sensitivity too low; trigger interval too long; PIR blocked.	Increase PIR sensitivity; shorten trigger interval; ensure clear view for PIR sensor.
SD card error	SD card full; incompatible SD card; corrupted SD card.	Delete files or replace SD card; use Class 10 or higher; format SD card in camera.

7. SPECIFICATIONS

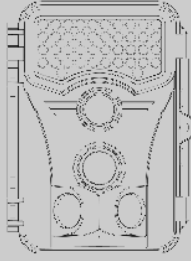
Feature	Detail
Photo Resolution	Up to 32MP
Video Resolution	Up to 4K
Trigger Speed	0.1 seconds
Night Vision Range	Up to 80ft (24m) with 40pcs No Glow IR LEDs
PIR Detection Range	Day: 80ft (24m), Night: 65ft (20m)
Field of View	120° Wide Lens
Waterproof Rating	IP66
Operating Temperature	-22°F to 158°F (-30°C to 70°C)
Storage	SD Card (up to 256GB, Class 10 or higher)
Power Supply	4 or 8 AA Batteries (external DC 6V/2A supported)
Display	2.4" LCD

8. WARRANTY AND SUPPORT

Vikeri products are designed for reliability and performance. This product comes with a standard manufacturer's warranty. For detailed warranty information, technical support, or service inquiries, please refer to the contact information provided with your purchase or visit the official Vikeri website.

Please retain your proof of purchase for warranty claims.

VIKERI



MODEL: 4K
Instruction Manual

[Vikeri 4K Trail Camera Instruction Manual](#)

This manual provides comprehensive instructions for the Vikeri 4K Trail Camera, covering setup, operation, features, and troubleshooting. Learn how to install, configure, and maintain your trail camera for optimal wildlife monitoring.

lang:en **score:44** filesize: 1.68 M page_count: 29 document date: 2022-08-26