

Manuals+

[Q & A](#) | [Deep Search](#) | [Upload](#)

manuals.plus /

- › [K18](#) /
- › [K18 PEPTIDE PREP™ Color-Safe Detox Clarifying Shampoo User Manual](#)

K18 K18-40035

K18 PEPTIDE PREP™ Color-Safe Detox Clarifying Shampoo User Manual

Brand: K18 | Model: K18-40035

1. PRODUCT OVERVIEW

The K18 PEPTIDE PREP™ Color-Safe Detox Clarifying Shampoo is designed to gently and effectively remove impurities from hair without stripping color. This pH-optimized formula targets product buildup, excess sebum, dirt, oils, and metals, preparing the hair for optimal health and treatment absorption.



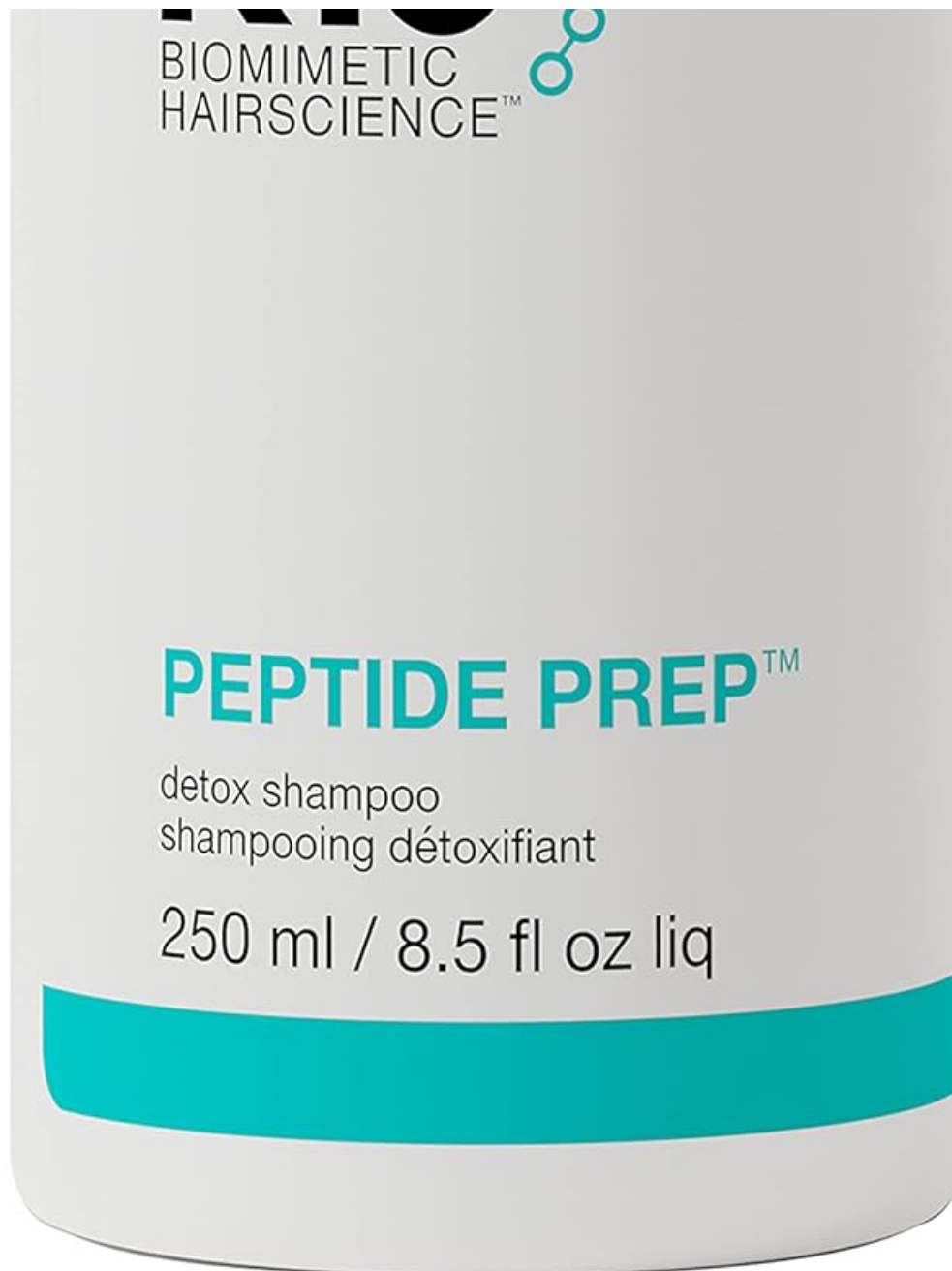


Figure 1: K18 PEPTIDE PREP™ Color-Safe Detox Clarifying Shampoo, 8.5 Fl Oz.

2. KEY FEATURES AND BENEFITS

- **Color-Safe Formula:** Designed to cleanse thoroughly without compromising hair color.
- **Non-Stripping:** Effectively removes buildup while maintaining hair's natural moisture balance.
- **pH-Optimized:** Formulated to maintain the hair's optimal pH level.
- **Removes Impurities:** Targets 99% of product buildup, 95% of sebum, and 76% of copper after just one use.
- **Prepares Hair:** Creates a clean canvas for subsequent hair treatments, such as the K18 leave-in molecular repair mask.

clarify



**FOR LESS
FREQUENT HEAVY
DUTY WASHING**

Just one wash removes
99% of product buildup*
95% sebum*
76% of copper*

Formulated with K18PEPTIDE™

*results observed on bleached hair tress after 1 wash with detox

Figure 2: Visual representation of the shampoo's clarifying effectiveness against product buildup, sebum, and metals.

3. PREPARATION FOR USE

Before applying the K18 PEPTIDE PREP™ Detox Clarifying Shampoo, ensure your hair is thoroughly wet. This allows for even distribution and optimal lathering of the product.

4. USAGE INSTRUCTIONS

1. Wet hair thoroughly.
2. Apply a small amount of K18 PEPTIDE PREP™ Detox Clarifying Shampoo to your hair.
3. Massage the shampoo into your hair and scalp to create a lather and effectively remove excess buildup.
4. Rinse thoroughly with water.
5. Repeat as needed for a deeper cleanse.
6. For best results, follow with the K18 leave-in molecular repair mask (sold separately) after shampooing.



Figure 3: The K18 PEPTIDE PREP™ shampoo bottle, illustrating the product's texture and color.

Related Product Video: K18 Professional Molecular Repair Mask

Video 1: This video from K18 Hair demonstrates the application and benefits of the K18 Professional Molecular Repair Mask, which is designed to be used after the PEPTIDE PREP™ Detox Clarifying Shampoo for comprehensive hair repair.

5. MAINTENANCE AND STORAGE

- **Frequency of Use:** Recommended for use once weekly or as needed, depending on product buildup and hair type.
- **Storage:** Store the shampoo in a cool, dry place away from direct sunlight. Ensure the cap is tightly closed after each use to maintain product integrity.

6. TROUBLESHOOTING

- **Hair feels dry after use:** While designed to be non-stripping, clarifying shampoos can sometimes leave hair feeling drier than regular shampoos. Ensure you follow up with a hydrating conditioner or hair mask, such as the K18 leave-in molecular repair mask.
- **Insufficient lather:** If the shampoo does not lather sufficiently, it may indicate significant product buildup. Rinse hair and repeat the shampooing process.

7. PRODUCT SPECIFICATIONS

Attribute	Value
Product Dimensions	2.5 x 2.5 x 5.5 inches
Item Weight	9.6 ounces
Item Model Number	K18-40035
UPC	858511001166
Brand	K18
Item Form	Gel
Hair Type	All
Scent	Floral
Age Range (Description)	Adult



Figure 4: The back label of the K18 PEPTIDE PREP™ shampoo bottle, detailing ingredients and usage information.

8. SAFETY INFORMATION

- For external use only.
- Avoid contact with eyes. If contact is made, rinse thoroughly with water.
- Keep out of reach of children.

9. WARRANTY AND SUPPORT

For any questions regarding the K18 PEPTIDE PREP™ Color-Safe Detox Clarifying Shampoo, please contact the manufacturer, K18 Hair, directly through their official website or customer service channels. Specific warranty details may vary and are typically provided with the product packaging or on the manufacturer's website.