

SENA 10C-EVO-02

Sena 10C EVO Bluetooth Camera and Communication System User Manual

Model: 10C-EVO-02

INTRODUCTION

This user manual provides comprehensive instructions for the Sena 10C EVO Bluetooth Camera and Communication System. The 10C EVO integrates Sena's leading Bluetooth communication platform with an advanced 4K camera, designed for seamless rider communication and high-quality video recording. Its compact and aerodynamic design is optimized for helmet integration, minimizing wind resistance and noise.

Please read this manual thoroughly before using your device to ensure proper operation and to maximize your experience.



Image: The Sena 10C EVO unit, featuring the main communication module, two helmet speakers, and two microphone options (boom and wired lavalier), all connected by wires. The main unit has a control dial and a camera lens.

PACKAGE CONTENTS

Upon opening your Sena 10C EVO package, please verify that all components are present and in good condition. The standard package typically includes:

- Sena 10C EVO Main Unit
- Helmet Clamp Kit
- Glued Surface Mounting Adapter
- Helmet Speakers (Pair)
- Boom Microphone
- Wired Microphone
- USB Power & Data Cable

- Speaker Pads
- Hook and Loop Fasteners for Speakers
- Hook and Loop Fasteners for Boom Microphone
- Hook and Loop Fasteners for Wired Microphone
- Boom Microphone Holder
- Allen Wrench
- User Manual (this document)

SETUP AND INSTALLATION

Proper installation of the Sena 10C EVO is crucial for optimal performance and user comfort. Follow these steps carefully.

1. Mounting the Main Unit

The 10C EVO can be mounted to most helmets using either the clamp kit or the glued surface mounting adapter.

- **Clamp Kit:** Slide the clamp between the helmet shell and the inner padding. Ensure it is securely fastened.
- **Glued Surface Mounting Adapter:** Clean the desired mounting area on the helmet surface thoroughly. Peel off the adhesive backing and firmly press the adapter onto the helmet for at least 60 seconds. Allow 24 hours for the adhesive to fully cure before use.



Image: A detailed view of the Sena 10C EVO main unit, showing its compact form factor and how it integrates with a helmet mounting bracket.

2. Installing Speakers

Attach the speakers to the inside of your helmet using the provided hook and loop fasteners. Position them directly over your ears for optimal audio clarity.



Image: A close-up of the two flat, circular helmet speakers, designed to fit inside a helmet, with their connecting wires.

3. Installing Microphones

Choose between the boom microphone (for open-face or modular helmets) or the wired microphone (for full-face helmets).

- **Boom Microphone:** Attach the boom microphone to the inside of the helmet near your mouth using the boom microphone holder and hook and loop fasteners.
- **Wired Microphone:** Attach the wired microphone to the inside of the helmet near your mouth using hook and loop fasteners.



Image: A detailed view of the two microphone options: a flexible boom microphone with a foam cover and a smaller wired microphone, both designed for helmet integration.

4. Connecting Components

Connect the speaker and microphone cables to the corresponding ports on the main 10C EVO unit. Ensure all connections are secure.

OPERATING INSTRUCTIONS

Powering On/Off

- **Power On:** Press and hold the **Center Button** and the **Phone Button** for 1 second.
- **Power Off:** Press and hold the **Center Button** and the **Phone Button** for 5 seconds.

Bluetooth Pairing

To pair your 10C EVO with a Bluetooth-enabled device (e.g., smartphone, GPS):

1. With the 10C EVO powered off, press and hold the **Phone Button** for 5 seconds until the LED flashes red and blue.
2. On your smartphone, enable Bluetooth and search for devices.
3. Select "Sena 10C EVO" from the list of detected devices.
4. If prompted, enter PIN "0000".

Intercom Communication

The 10C EVO supports four-way Bluetooth intercom communication up to 1.6 km (1 mile) in open terrain.

- **Starting Intercom:** Tap the **Center Button** once to connect with the first paired intercom friend. Tap twice for the second, and three times for the third.
- **Ending Intercom:** Tap the **Center Button** once.

Camera Operation

The integrated camera captures video at 4K/30FPS.

- **Start Recording:** Press and hold the **Camera Button** for 1 second.
- **Stop Recording:** Press and hold the **Camera Button** for 1 second again.
- **Video Tagging:** The 10C EVO supports video tagging, allowing you to save specific moments from your ride. Refer to the Sena Utility App for detailed instructions on configuring and using this feature.

Music and Audio

- **Play/Pause Music:** Press and hold the **Center Button** for 1 second.
- **Volume Up:** Rotate the **Jog Dial** clockwise.
- **Volume Down:** Rotate the **Jog Dial** counter-clockwise.
- **Next Track:** Press the **Jog Dial** button forward.
- **Previous Track:** Press the **Jog Dial** button backward.

The Smart Audio Mix feature allows you to blend intercom audio with music or GPS directions.

MAINTENANCE AND CARE

To ensure the longevity and optimal performance of your Sena 10C EVO, follow these maintenance guidelines:

- **Cleaning:** Wipe the main unit with a soft, damp cloth. Do not use harsh chemicals or solvents.
- **Water Resistance:** The 10C EVO is designed to be water-resistant, but it is not waterproof. Avoid submerging the device in water.
- **Battery Care:** The device uses a Lithium Polymer battery. For best battery life, avoid fully discharging the battery frequently. Charge the device regularly, especially if it will be stored for extended periods.
- **Storage:** Store the device in a cool, dry place away from direct sunlight and extreme temperatures.
- **Firmware Updates:** Regularly check for and install firmware updates using the Sena Device Manager software. Updates often include performance improvements and new features.

TROUBLESHOOTING

If you encounter issues with your Sena 10C EVO, refer to the following common troubleshooting steps:

Device Not Powering On

- Ensure the battery is charged. Connect the device to a power source using the USB cable.
- Perform a factory reset (refer to the full Sena manual or Sena website for specific instructions, as this often involves a combination of button presses).

No Audio from Speakers

- Check that the speakers are securely connected to the main unit.
- Verify that the volume is not set to minimum.
- Ensure the speakers are correctly positioned over your ears inside the helmet.

Intercom Connection Issues

- Ensure both devices are within the maximum intercom range (1.6 km).
- Re-pair the intercom devices.
- Check for any physical obstructions or strong electromagnetic interference.

Camera Recording Problems

- Ensure a compatible microSD card is inserted and has sufficient free space.
- Check the battery level, as low battery can prevent recording.
- Format the microSD card if issues persist (this will erase all data on the card).

SPECIFICATIONS

Feature	Detail
Model Name	Sena 10C EVO
Model Number	10C-EVO-02
Dimensions (Main Unit)	2.78 x 1.44 x 0.54 inches
Weight (Main Unit)	2.12 ounces
Bluetooth	Bluetooth 4.1
Intercom Range	Up to 1.6 km (1 mile) in open terrain
Intercom Support	4-way intercom
Video Recording Quality	4K @ 30FPS
Talk Time	Up to 20 hours
Video Recording Time	Up to 1.5 hours
Battery Type	Lithium Polymer (included)
Special Features	Lightweight, Smart Audio Mix, Video Tagging, Advanced Noise Control, HD Voice, Voice Prompts, Remote Control Compatible

WARRANTY INFORMATION

Sena products are covered by a limited warranty from the date of purchase. The specific terms and duration of the warranty may vary by region and product. Please retain your proof of purchase for warranty claims.

For detailed warranty information, including coverage, exclusions, and how to make a claim, please visit the official Sena website or contact Sena customer support.

CUSTOMER SUPPORT

For further assistance, technical support, or to download the latest firmware and user guides, please visit the official Sena website:

www.sena.com

You can also find FAQs and community forums on the Sena support portal.

© 2023 Sena Technologies, Inc. All rights reserved.

Related Documents

SENA

10C EVO
MOTORCYCLE BLUETOOTH® CAMERA
AND COMMUNICATION SYSTEM

HD 1080P

QUICK START GUIDE

RIDE CONNECTED

Blast your favorite tunes, talk over the intercom with your buddies, send directions from your GPS and more, all through your headset. With built-in Bluetooth® capabilities, HD camera, HD speakers and a microphone using Advanced Noise Control™ technology, let us show you how to connect or listen.

- 1 Bluetooth® Integrated
- 2 1.6 Km (1.0 Mile) Intercom
- 3 UHD Camera Integrated
- 4 Four-Way Intercom
- 5 Smart Audio Mix™
- 6 Advanced Noise Control™
- 7 WiFi Enabled
- 8 Audio Multitasking™
- 9 Audio Source Priority

GETTING STARTED

- This product comes with a Quick Start Guide, which is a basic version of the User Guide. A FULL VERSION OF THE USER'S GUIDE CAN BE DOWNLOADED AT SENA.COM
- Update this product for free with the latest firmware to fully enjoy the new advanced features built into this product. Visit SENA.COM to see how to update your product.
- Users can follow Sena on Facebook, YouTube, Twitter and Instagram to receive the most up-to-date information on products, helpful tips and all other announcements regarding Sena products.

SENA Technologies, Inc.
Customer Support: SENA.COM

10C EVO GETTING STARTED

GETTING STARTED

How to Use This Guide

The legend and icons are here to help you read the Buttons. New technology can be confusing but we've created a simple way to perform when using Buttons.

- Function = Button(s) to Tap or Hold

Buttons

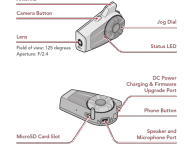
GETTING STARTED

Icon Legend

- 1 Tap (pressing) the button once
- 2 Press and hold (pressing) the button for a specified amount of time
- 3 Double tap (pressing) the button twice
- 4 Rotate while pressing Log Out clockwise (right) or counter-clockwise (left)
- 5 Audible prompt

QUICK START GUIDE

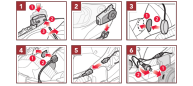
Product Details



Downloaded from <http://ajphaphysocpharm.sagepub.com/> at 108.110.1.106 on 05/11/15
 Copyright © 2015 SAGE Publications. All rights reserved. No part of this article may be reproduced without written permission from SAGE Publications. For more information, contact the SAGE Publications rights and permissions department at rights@sagepub.com.

QUICK START GUIDE

Installation



Sena Motorcycles App
 • Download

- Android: Google Play Store > **Sena Motorcycles**
- iOS: App Store > **Sena Motorcycles**

QUICK START GUIDE

Sena Camera App

The **Sena Camera App** allows you to see a live preview from the camera, manage recorded videos as well as configure the video settings using the built-in WiFi feature on camera system. When the camera and the **Sena Camera App** are connected, the camera is synchronized with the smartphone's date and time. Download the **Sena Camera App** for **Android** and **Apple** operating systems from sena.com.

Sena Device Manager

The **Sena Device Manager** allows you to upgrade the firmware and configure its settings directly from your PC or Apple computer. Download the **Sena Device Manager** from sena.com.

Basic Operations



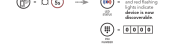
QUICK START GUIDE

Checking the Battery Level



Bluetooth Pairing (Phone, MP3, GPS)
Mobile Menu Expires

Alternating blue



QUICK START GUIDE

Mobile Phone

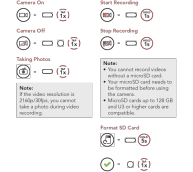


Music Controls



QUICK START GUIDE

Camera Controls



QUICK START GUIDE



Note:
IF YOUR SMARTPHONE OR REGION DOES NOT SUPPORT 5 GHz,
YOU MUST CHANGE THE WIFI CHANNEL TO 2.4 GHz.

QUICK START GUIDE

Intercom

Up to three other people can be paired with the headset for Bluetooth intercom conversations.



QUICK START GUIDE

Product Details

Antenna

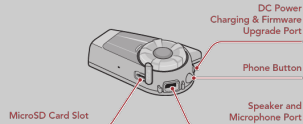
Camera Button

Lens

Field of view: 125 degrees
Aperture: F/2.4

Jog Dial

Status LED

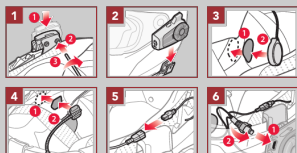


10C EVO

QUICK START GUIDE

QUICK START GUIDE

Installation



Basic Operations

Powering On



Powering Off



Volume Up



Volume Down



QUICK START GUIDE

Checking the Battery Level

Visual Method

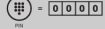


Audible Method



Bluetooth Pairing (Phone, MP3, GPS)

Mobile Phone Pairing



QUICK START GUIDE

Mobile Phone

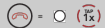
Answer a Call



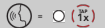
Reject a call



End a Call



Make Call with Voice Dialer



Music Controls

Play/Pause



Track forward



Track backward



QUICK START GUIDE

Camera Controls

Camera On

Start Recording

=

=

=

Note:
If the video resolution is 2160p/30fps, you cannot take a photo during video recording.

Note:
• You cannot record videos without a microSD card.
• Your microSD card needs to be formatted before using the camera.
• MicroSD cards up to 128 GB and U3 or higher cards are compatible.

Format SD Card

 =

=

QUICK START GUIDE

Change WiFi Channel
(Default: 5 GHz)

 =

Select 5 GHz

 =

Select 2.4 GHz

 =

Note:
IF YOUR SMARTPHONE OR REGION DOES NOT SUPPORT 5 GHz, YOU MUST CHANGE THE WIFI CHANNEL TO 2.4 GHz.

QUICK START GUIDE

Intercom

Up to three other people can be paired with the headset for Bluetooth intercom conversations.

Pairing Headset A with Headset B

 =

Start/End Intercom with Headset B

 =

LED Status

 =

QUICK START GUIDE

Radio

FM Radio On

 =

FM Radio Off

 =

Scan Stations

 =

Seek Stations

 =

=

=

QUICK START GUIDE

Headset Configuration Menu

Accessing the Headset Configuration Menu

 =

Navigating Between Menu Options

 =

Execute Menu Options

 =

=

[\[pdf\]](#) Quick Start Guide Guide

QuickGuide Sena 10C EVO 02 firmware sena senablueetoothmanager |||

SENA 10C EVO MOTORCYCLE BLUETOOTH CAMERA AND COMMUNICATION SYSTEM QUICK START GUIDE 1.0.0 ENGLISH QUICK START GUIDE Product Details Antenna Camera Button Lens Field of view: 125 degrees Aperture: F/2.4 Jog Dial Status LED MicroSD Card Slot DC Power Charging Firmware Upgrade Port Phone Butt...

lang:en score:27 filesize: 1.32 M page_count: 1 document date: 2019-06-27

QUICK START GUIDE

Sena Device Manager

The Sena Device Manager allows you to upgrade the firmware and configure its settings directly from your PC or Apple computer. Download the Sena Device Manager, please visit sena.com.

Sena App

The Sena App allows you to configure the headset settings. Download the Sena App for Android and Apple operating systems from sena.com.



QUICK START GUIDE

Sena Camera App

The Sena Camera App allows you to see a live preview from the camera, manage recorded videos as well as configure the video settings using the built-in WiFi feature on camera system. When the camera and the Sena Camera App are connected, the camera is synchronized with the smartphone's date and time. Download the Sena Camera App for Android and Apple operating systems from sena.com.



QUICK START GUIDE

Troubleshooting

Factory Reset



Fault Reset



Note: Fault Reset will not restore the headset to factory default settings.

QUICK REFERENCE

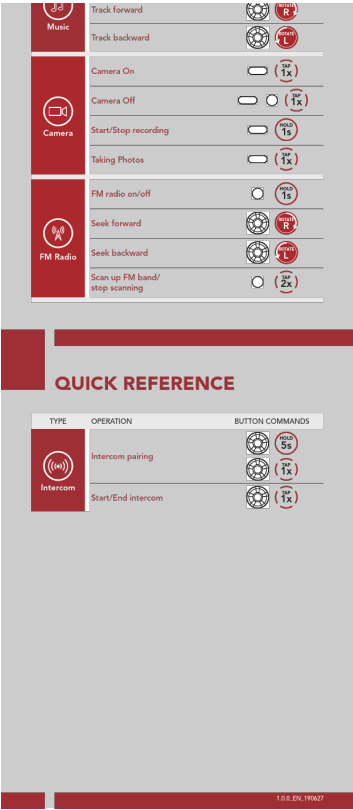
TYPE	OPERATION	BUTTON COMMANDS
Basic Operations	Power on / Power off	[Power] 10s
	Volume up / Volume down	[R] [L]
Mobile Phone	Answer phone call	[Call] 1s
	End phone call	[Call] 1s
	Reject phone call	[Call] 2s
	Voice dial	[Call] 1s
	Speed dial	[Call] 2s

10C EVO

QUICK REFERENCE

QUICK REFERENCE

TYPE	OPERATION	BUTTON COMMANDS
Mobile Phone	Play/Pause music	[Call] 1s



[pdf] Accessories Price List

Brendan Cashman Motorsports Pricing Policies Sena map price list powersports sfvrsn 1f19087 2 static
sena docs default source policies |||

COMMON ACCESSORIES Part Number SC-A0100 SC-A0102 SC-A0103 SC-A0105
SC-A0106 SC-A0109 SC-A0110 SC-A01 ... -ST1-10 SPIDER-ST1-10D SR SERIES
Part Number SR10-10 SR10-A1000 SC-DS-01 10C Part Number 10C-EVO-01 **10C-EVO-02** 10C-PRO-01 10C-A0101 10C-A0109 10C-A0311 10C-EVO-A0311 10R Part
Number 10R-01 10R-01D 10R...

lang:en score:19 filesize: 100.43 K page_count: 4 document date: 2022-06-03