

## Baseus CGNL020101

# Baseus Super Energy Air Car Jump Starter 1000A MAX User Manual

Model: CGNL020101

## 1. INTRODUCTION

Thank you for choosing the Baseus Super Energy Air Car Jump Starter. This device is a versatile and essential tool for any vehicle owner, combining the functionality of a powerful car jump starter with a portable power bank. It is designed to provide reliable emergency starting power for 12V vehicles and can also charge your electronic devices on the go. Please read this manual carefully before use to ensure safe and optimal performance.



Image: The Baseus Super Energy Air Car Jump Starter unit, showing the main power bank, smart clamps, and a USB

charging cable.

## 2. PACKAGE CONTENTS

- Baseus Super Energy Air Car Jump Starter Unit
- Smart Jump Starter Clamps (Red for positive, Black for negative)
- USB Charging Cable (Type-C)
- User Manual (This document)



Image: The retail packaging for the Baseus Super Energy Air Car Jump Starter, indicating the product inside.

### 3. PRODUCT OVERVIEW

Familiarize yourself with the components of your jump starter:

- **Main Unit:** Contains the battery, control circuitry, and charging ports.
- **Power Button:** Activates the device and checks battery level.
- **LED Display:** Shows battery percentage.
- **USB-A Output Port:** For charging external devices (5V/2.4A Max).
- **USB-C Input/Output Port:** For charging the jump starter or external devices (5V/2.4A Max).
- **Jump Start Port:** Connects to the smart clamps.
- **Emergency LED Light:** Built-in flashlight function.
- **Smart Clamps:** Red (+) and Black (-) clamps with built-in safety features.

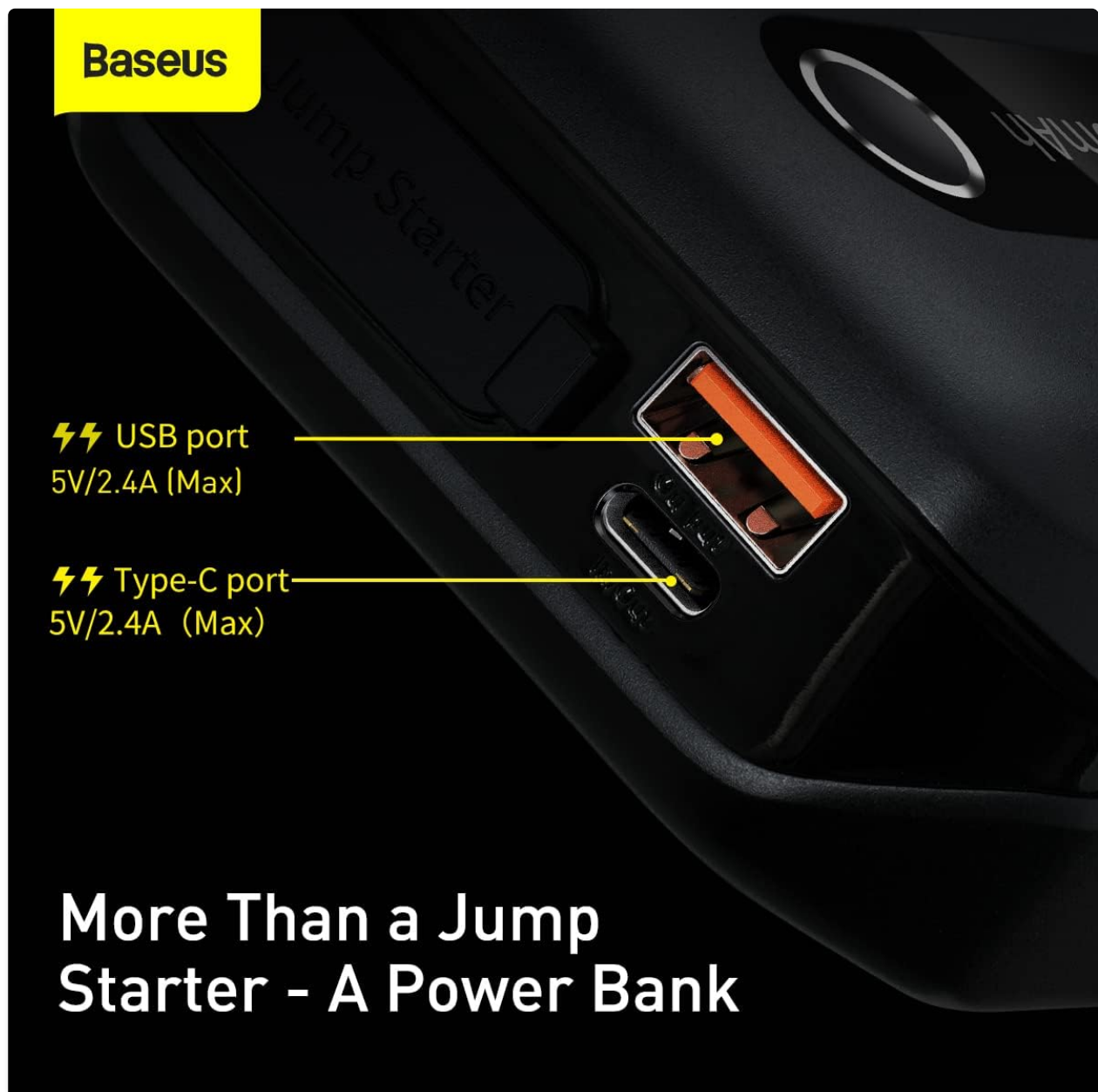


Image: A detailed view of the Baseus Jump Starter's side, highlighting the USB-A and USB-C ports for charging external devices and the unit itself.

## 4. CHARGING THE JUMP STARTER

Before first use, fully charge the jump starter. It is recommended to keep the unit charged above 50% for optimal performance and longevity.

1. Connect the provided USB-C charging cable to the USB-C input port on the jump starter.
2. Connect the other end of the USB-C cable to a USB wall adapter (not included) or a car charger.
3. The LED display will show the charging progress. The unit is fully charged when the display shows 100%.

A full charge typically takes several hours depending on the power source.

## 5. OPERATING INSTRUCTIONS: VEHICLE JUMP STARTING

This device is designed to jump start 12V vehicles with dead batteries, even in low temperatures.

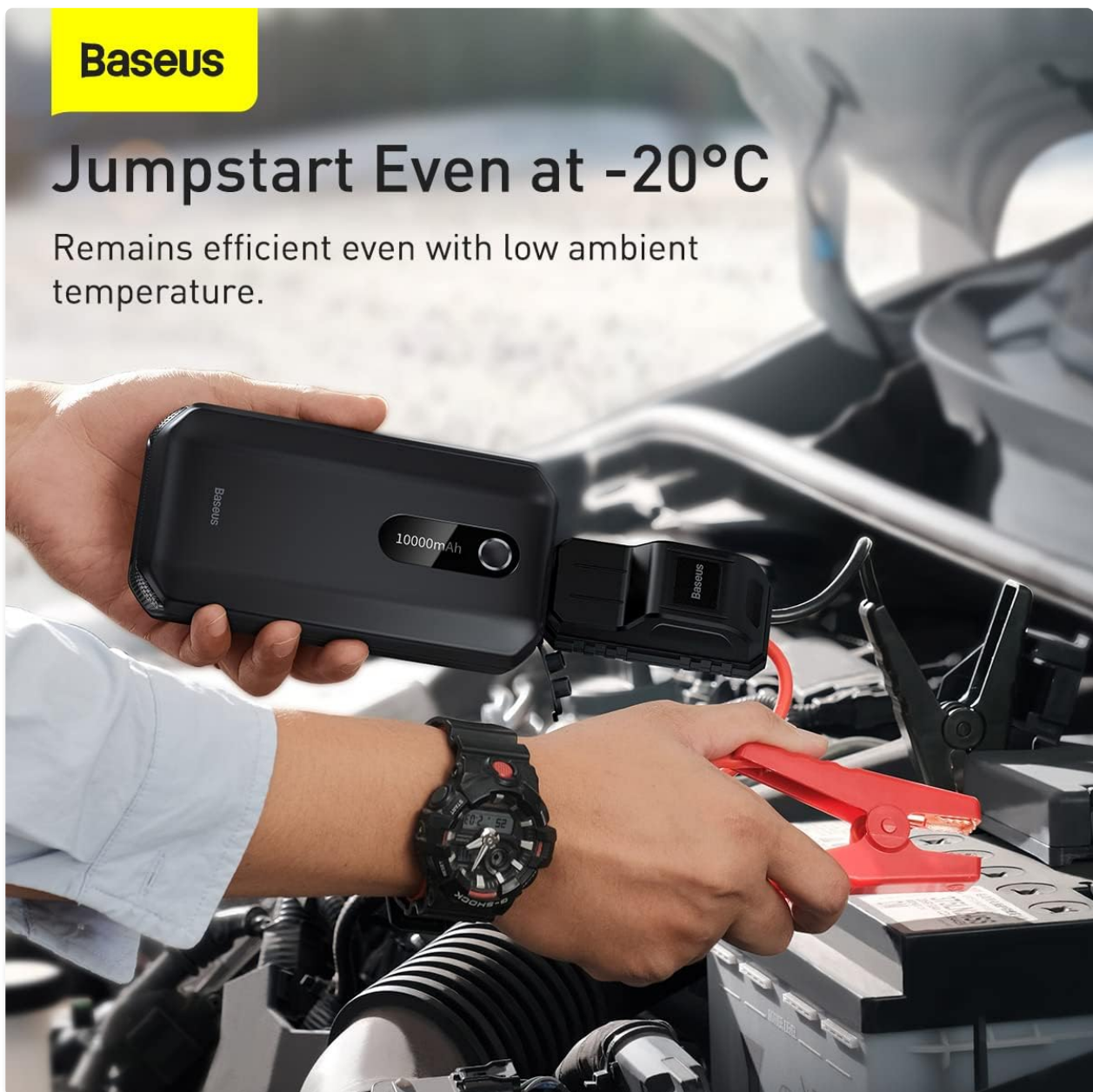


Image: The Baseus Jump Starter connected to a car battery, demonstrating its ability to jumpstart even at -20°C.

### Steps to Jump Start Your Vehicle:

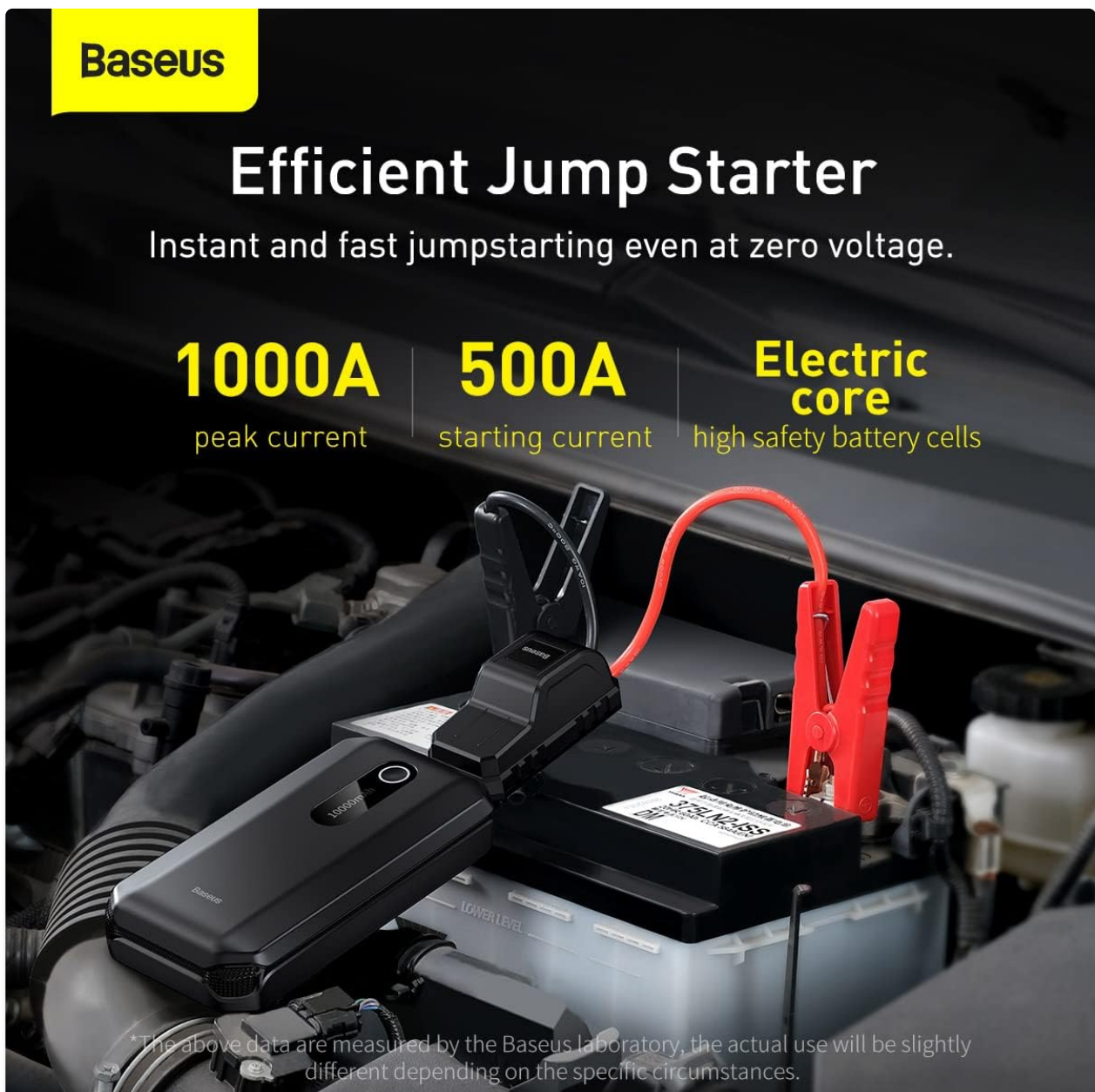


1. **Ensure Safety:** Park your vehicle in a safe location, engage the parking brake, and turn off all electrical accessories.
2. **Connect Clamps to Jump Starter:** Insert the blue plug of the smart clamps into the jump start port on the main unit. Ensure it is fully inserted.
3. **Connect Clamps to Battery:**
  - Connect the **RED (+)** clamp to the **positive (+)** terminal of your vehicle's battery.
  - Connect the **BLACK (-)** clamp to the **negative (-)** terminal of your vehicle's battery.

Ensure a good connection. The smart clamps have indicator lights that will show connection status.

4. **Start Vehicle:** Once the clamps are correctly connected and the indicator light on the smart clamps is solid green, start your vehicle's engine.
5. **Remove Clamps:** As soon as the engine starts, immediately remove the smart clamps from the vehicle battery, then disconnect the clamps from the jump starter unit.

If the vehicle does not start on the first attempt, wait at least 30 seconds before trying again. Do not attempt more than 3 consecutive jump starts without allowing the unit to cool down.

The advertisement features a black Baseus jump starter connected to a car battery with red and black clamps. The background is a dark, close-up shot of a car's engine compartment. The Baseus logo is in a yellow box at the top left. The main title 'Efficient Jump Starter' is in large white font, followed by the tagline 'Instant and fast jumpstarting even at zero voltage.' in smaller white font. Three yellow text blocks highlight '1000A peak current', '500A starting current', and 'Electric core high safety battery cells'. A disclaimer at the bottom states that the data is from laboratory measurements and actual use may vary.

**Baseus**

# Efficient Jump Starter

Instant and fast jumpstarting even at zero voltage.

**1000A**  
peak current

**500A**  
starting current

**Electric core**  
high safety battery cells

\*The above data are measured by the Baseus laboratory, the actual use will be slightly different depending on the specific circumstances.

Image: The Baseus Jump Starter connected to a car battery, illustrating its efficient jumpstarting capabilities with 1000A peak

## 6. OPERATING INSTRUCTIONS: POWER BANK FUNCTION

The Baseus Super Energy Air Car Jump Starter can also function as a portable power bank to charge your electronic devices.

1. Connect your device's USB charging cable to either the USB-A or USB-C output port on the jump starter.
2. The jump starter will automatically begin charging your device.
3. To stop charging, simply disconnect your device.

The unit provides 5V/2.4A (Max) output from both USB-A and USB-C ports.

## 7. SAFETY PRECAUTIONS

Please observe the following safety guidelines:

- Do not short-circuit the jump starter.
- Do not disassemble the unit.
- Do not expose the unit to extreme temperatures (above 60°C or below -20°C).
- Do not immerse the unit in water.
- Keep out of reach of children.
- Ensure proper polarity when connecting to a vehicle battery (Red to +, Black to -). Reverse polarity can damage the unit and/or vehicle.
- Do not use the jump starter if it is damaged or swollen.
- Remove the jump starter from the vehicle battery immediately after the engine starts.

## 8. MAINTENANCE AND STORAGE

- **Charging:** Recharge the unit every 3-6 months, even if not used, to maintain battery health.
- **Cleaning:** Wipe the unit with a dry, soft cloth. Do not use harsh chemicals or abrasive cleaners.
- **Storage:** Store the jump starter in a cool, dry place, away from direct sunlight and flammable materials.

**Baseus**

# Long-lasting Battery



Image: A close-up view of the internal battery layers, illustrating the long-lasting battery design of the Baseus Jump Starter.

## 9. TROUBLESHOOTING

Problem	Possible Cause	Solution
Vehicle does not start.	Low battery on jump starter; Incorrect clamp connection; Vehicle battery completely dead.	Ensure jump starter is fully charged; Check clamp connections for proper polarity and secure contact; Try again after 30 seconds. If battery is completely dead, it may require professional assistance.
Jump starter not charging.	Faulty charging cable or adapter; Loose connection.	Try a different USB-C cable and/or wall adapter; Ensure cable is securely plugged into both the jump starter and power source.

Problem	Possible Cause	Solution
Smart clamps indicator light is red/flashing.	Reverse polarity; Short circuit; Over-temperature.	Disconnect immediately and re-connect clamps with correct polarity; Check for any metal objects causing a short; Allow unit to cool down if it's hot.

## 10. SPECIFICATIONS

- **Model:** CGNL020101
- **Brand:** Baseus
- **Peak Current:** 1000A
- **Starting Current:** 500A
- **Battery Type:** Lithium Polymer
- **Input (USB-C):** 5V/2.4A Max
- **Output (USB-A):** 5V/2.4A Max
- **Output (USB-C):** 5V/2.4A Max
- **Product Dimensions:** 3.94 x 1.97 x 1.18 inches (approx.)
- **Item Weight:** 1.1 pounds (approx.)
- **Operating Temperature:** -20°C to 60°C

## 11. WARRANTY AND SUPPORT

Baseus products are designed and manufactured to the highest quality standards. For warranty information, technical support, or service inquiries, please refer to the warranty card included with your product or visit the official Baseus website. Please retain your proof of purchase for warranty claims.

**Manufacturer:** Baseus

**Model Number:** CGNL020101

**Date First Available:** June 5, 2024



