



Manuals.plus /

› DUODUOGO /

› 5G WiFi Android 11 Tablet 10.4 Inch with Keyboard, Touchscreen 4GB RAM + 64/256GB ROM Extension, Dual WiFi Tablet PC, Dual Camera, Bluetooth, OTG, Type-C

DUODUOGO S7

DUODUOGO 5G WiFi Android 11 Tablet S7 User Manual

Model: S7
Brand: DUODUOGO

1. INTRODUCTION

This user manual provides comprehensive instructions for the DUODUOGO 5G WiFi Android 11 Tablet S7. It covers product features, setup, operation, maintenance, and troubleshooting to ensure optimal use of your device. Please read this manual thoroughly before using the tablet.

2. WHAT'S IN THE BOX

- DUODUOGO 5G WiFi Android 11 Tablet (10.4 Inch)
- Detachable Keyboard
- USB Type-C Cable
- Power Adapter
- User Manual (this document)

3. PRODUCT OVERVIEW

The DUODUOGO S7 tablet features a 10.4-inch touchscreen display, powered by Android 11, and includes a detachable keyboard for enhanced productivity. It supports dual-band Wi-Fi (2.4G and 5G) and offers ample storage with 4GB RAM and 64GB internal storage, expandable up to 256GB.



Image: The DUODUOGO S7 tablet in blue, shown with its detachable keyboard and a hand interacting with the touchpad. The tablet screen displays "Android 11". A smaller inset image shows the tablet from the rear with its kickstand extended.

Key Features:

- **Operating System:** Android 11
- **Display:** 10.4-inch IPS Touchscreen (1280 x 800 resolution)
- **Memory:** 4GB RAM
- **Storage:** 64GB ROM (expandable up to 256GB)
- **Cameras:** Rear 8MP, Front 5MP
- **Connectivity:** Dual WiFi (2.4G/5G), Bluetooth, OTG, Type-C
- **Battery:** 6500mAh

Android 11 System

Visit your favorite apps, music, movies, books, etc

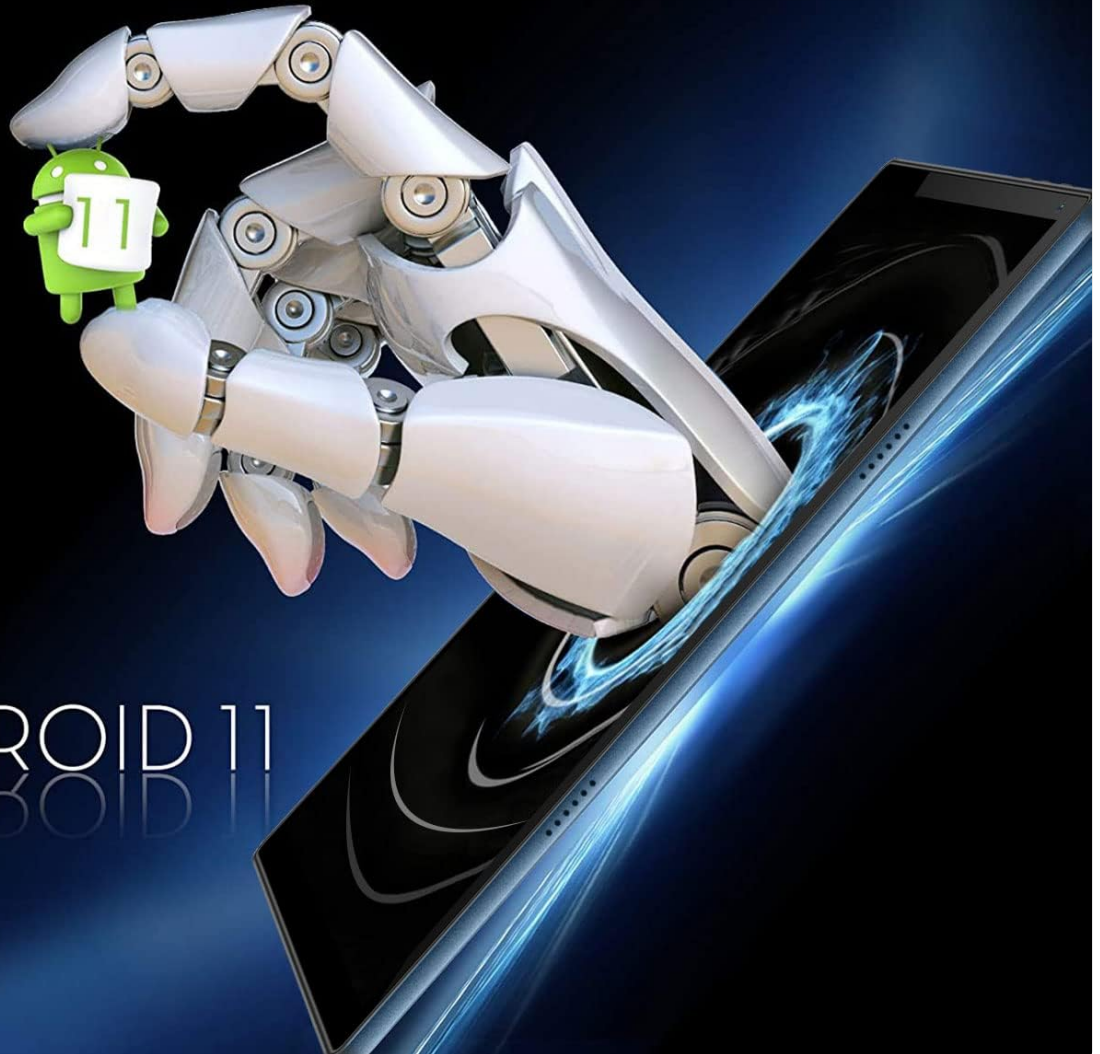


Image: A stylized depiction of the Android 11 system, with a robotic hand reaching out from a tablet screen towards a small Android mascot holding the number 11. Text reads "Android 11 System" and "Visit your favorite apps, music, movies, books, etc".

5G + 2.4G Dual Band WiFi



Image: The tablet screen displaying a large "5G" logo with Wi-Fi signals emanating from it, indicating dual-band 5G and 2.4G Wi-Fi connectivity. Text reads "5G + 2.4G Dual Band WiFi".

Large Capacity Battery



4GB RAM



64GB ROM



256GB Expand



Image: Three tablets shown from the back, with the middle tablet displaying a photo gallery. Icons and text indicate "Large Capacity Battery", "4GB RAM", "64GB ROM", and "256GB Expand".

High Capacity Battery

6500mAh



4H



7H



4.5H



5.5H



6H



6-8H

Image: A tablet lying flat, with a large "6500mAh" text overlay, indicating its high capacity battery. Below are icons and estimated usage times for various activities like gaming, reading, video playback, music, web browsing, and general use.

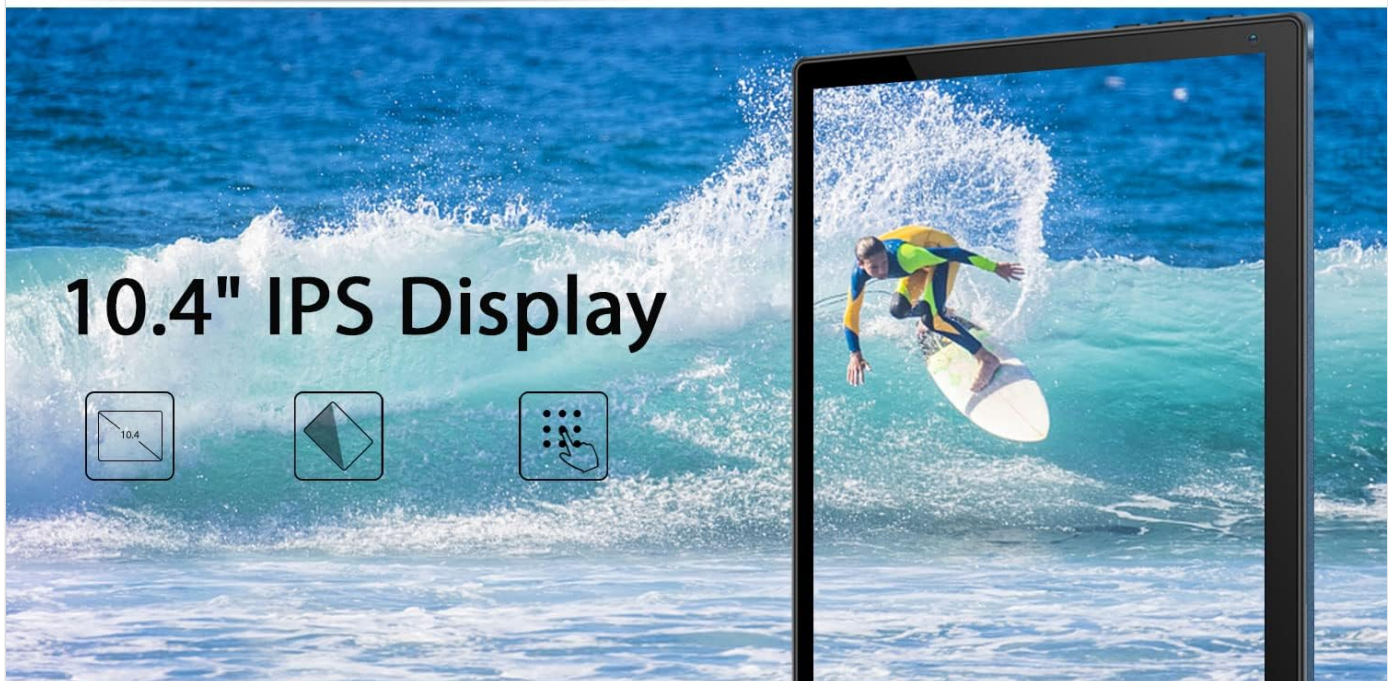


Image: A collage showing the tablet's camera capabilities (people on a beach, family on a boat) and its 10.4-inch IPS display quality (a surfer on a wave). Text highlights "Front 5MP Rear 8MP" and "10.4" IPS Display".

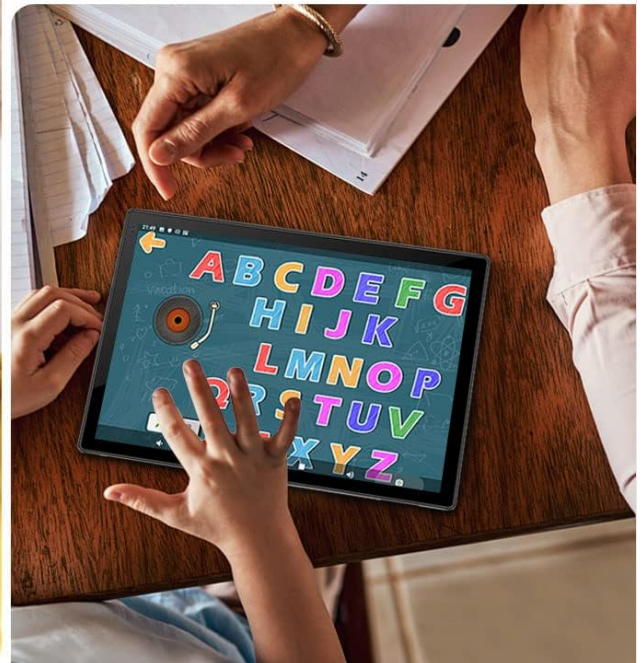
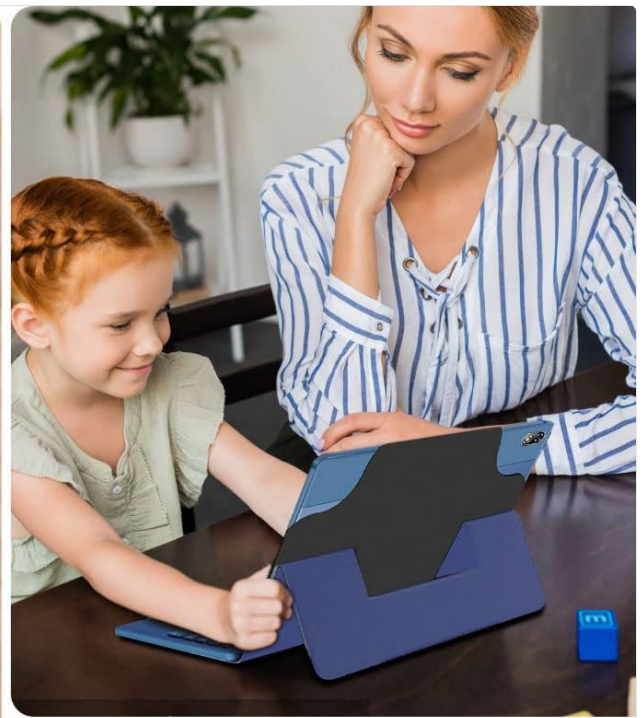


Image: A four-panel collage demonstrating different usage modes: a person using the tablet with keyboard, a child and adult using the tablet with a stand, and a child interacting with a learning app on the tablet. Text reads "Enjoy Different Mode".

4. SETUP

4.1 Charging the Tablet

Before first use, fully charge the tablet. Connect the USB Type-C cable to the tablet's charging port and the other end to the power adapter. Plug the adapter into a wall outlet. The charging indicator will show the charging status. A full charge typically takes 3-4 hours.

4.2 Power On/Off

- **To Power On:** Press and hold the Power button (usually located on the side or top edge) for a few seconds until the DUODUOGO logo appears on the screen.
- **To Power Off:** Press and hold the Power button until a power-off menu appears. Select "Power off" or "Shut down".
- **To Restart:** From the power-off menu, select "Restart".

4.3 Initial Setup Wizard

Upon first power-on, the Android 11 setup wizard will guide you through essential configurations:

1. Select your preferred language.
2. Connect to a Wi-Fi network.
3. Sign in with your Google account or create a new one. This is necessary to download apps from Google Play Store.
4. Set up screen lock (PIN, pattern, password).
5. Review and accept Google services terms.

4.4 Attaching the Keyboard

The detachable keyboard connects magnetically to the tablet. Align the magnetic connector on the keyboard with the corresponding pins on the tablet's bottom edge. The keyboard will snap into place and connect automatically. No separate pairing is required.

5. OPERATING INSTRUCTIONS

5.1 Navigating Android 11

- **Home Screen:** Swipe left or right to access different home screens.
- **App Drawer:** Swipe up from the bottom of the screen to view all installed applications.
- **Notifications & Quick Settings:** Swipe down from the top of the screen to access notifications and quick settings toggles (Wi-Fi, Bluetooth, Brightness, etc.).
- **Multitasking:** Swipe up from the bottom and hold, then release to see recent apps. Tap an app to switch, or swipe it away to close.

5.2 Wi-Fi Connectivity

To connect to a Wi-Fi network:

1. Go to **Settings > Network & internet > Wi-Fi**.
2. Toggle **Wi-Fi On**.
3. Select your desired network from the list.
4. Enter the password if prompted, then tap **Connect**.

5.3 Using the Cameras

The tablet features a 5MP front camera and an 8MP rear camera.

- Open the **Camera** app from the home screen or app drawer.
- Tap the camera switch icon to toggle between front and rear cameras.
- Tap the shutter button to take a photo or start/stop video recording.

5.4 Storage Management

The tablet comes with 64GB of internal storage. You can expand this using a microSD card (up to 256GB).

- **Inserting a microSD Card:** Locate the microSD card slot (usually on the side of the tablet). Gently insert the card until it clicks into place.
- **Managing Storage:** Go to **Settings > Storage** to view storage usage and manage files.

6. MAINTENANCE

- **Cleaning:** Use a soft, lint-free cloth to clean the screen and body of the tablet. Do not use liquid cleaners or aerosols directly

on the device.

- **Battery Care:** Avoid extreme temperatures. Do not let the battery fully drain frequently. For long-term storage, charge the battery to about 50%.
- **Software Updates:** Periodically check for system updates in **Settings > System > System update** to ensure optimal performance and security.
- **Protection:** Use the provided keyboard case to protect the tablet from scratches and minor impacts.

7. TROUBLESHOOTING

7.1 Tablet Does Not Turn On

- Ensure the tablet is sufficiently charged. Connect it to the charger for at least 30 minutes.
- Press and hold the Power button for 10-15 seconds to force a restart.

7.2 Wi-Fi Connection Issues

- Check if Wi-Fi is enabled in Quick Settings or Network & internet settings.
- Restart your Wi-Fi router.
- Forget the network in tablet settings and reconnect.
- Ensure you are within range of the Wi-Fi signal.

7.3 Keyboard Not Responding

- Ensure the keyboard is properly aligned and connected to the magnetic pins on the tablet.
- Gently clean the magnetic pins on both the tablet and keyboard to ensure good contact.
- Restart the tablet.

7.4 Apps Crashing or Freezing

- Close the app and reopen it.
- Clear the app's cache and data in **Settings > Apps & notifications > [App Name] > Storage & cache**.
- Ensure the app is updated to its latest version from Google Play Store.
- Restart the tablet.

8. SPECIFICATIONS

Feature	Specification
Brand	DUODUOGO
Model Number	S7
Operating System	Android 11
Screen Size	10.4 Inches
Screen Resolution	1280 x 800
RAM	4 GB
Internal Storage	64 GB
Expandable Storage	Up to 256 GB (MicroSD)
Rear Camera	8 MP
Front Camera	5 MP
Battery Capacity	6500 mAh
Connectivity	Dual WiFi (2.4G/5G), Bluetooth, OTG, Type-C
Product Dimensions (LxWxH)	9.5 x 6.4 x 0.35 inches

9. WARRANTY AND SUPPORT

DUODUOGO provides comprehensive support for its products. For any issues or inquiries regarding your DUODUOGO S7 Tablet, please refer to the following:

- **Warranty:** The product comes with a one-month free replacement policy and 365 days of free repair in case of non-human damage.
- **Customer Support:** If you encounter any problems using your DUODUOGO device, you can contact us through Amazon. Our support team aims to reply to your message and resolve your problem within 12 hours until you are satisfied.
- **Software & Apps:** The DUODUOGO Device is GMS certified, allowing you to download applications directly from Google Play Store.