

Manuals+

[Q & A](#) | [Deep Search](#) | [Upload](#)

manuals.plus /

› [usogood](#) /

› [Usogood TC30 Trail Camera User Manual](#)

usogood TC30 1080P

Usogood TC30 Trail Camera User Manual

Model: TC30 (1080P)

INTRODUCTION

This manual provides detailed instructions for the setup, operation, maintenance, and troubleshooting of your Usogood TC30 Trail Camera. Please read this manual thoroughly before using the camera to ensure proper function and longevity of the device.



Front view of the Usogood TC30 Trail Camera, showcasing its camouflage design and lens array.

PACKAGE CONTENTS

Verify that all items are present in your package:

- Trail Camera x 1
- Mounting Belt x 1
- Instruction Manual x 1
- USB Cable x 1

PRODUCT SPECIFICATIONS

Feature	Specification
Model Name	TC30 (1080P)
Video Resolution	1080P HD
Photo Resolution	24 Megapixels
Night Vision	36pcs 850nm IR LEDs, up to 65ft range
Motion Detection	3 PIRs, 120° wide angle, 65ft detection range
Trigger Speed	0.3 seconds
Waterproof Rating	IP66
Storage	Supports up to 32GB standard memory card
Power Source	8 AA batteries (not included) or 6V external power
Standby Time	Up to 8 months
Operating Temperature	-10°C to 40°C

SETUP GUIDE

1. Battery Installation

The TC30 Trail Camera requires 8 AA batteries for operation. Ensure correct polarity when inserting batteries.

1. Open the camera casing by unlatching the side clips.
2. Locate the battery compartment.
3. Insert 8 AA batteries, observing the positive (+) and negative (-) indicators.
4. Close the battery compartment securely.



Illustration showing the correct insertion of AA batteries into the camera's battery compartment.

2. Memory Card Insertion

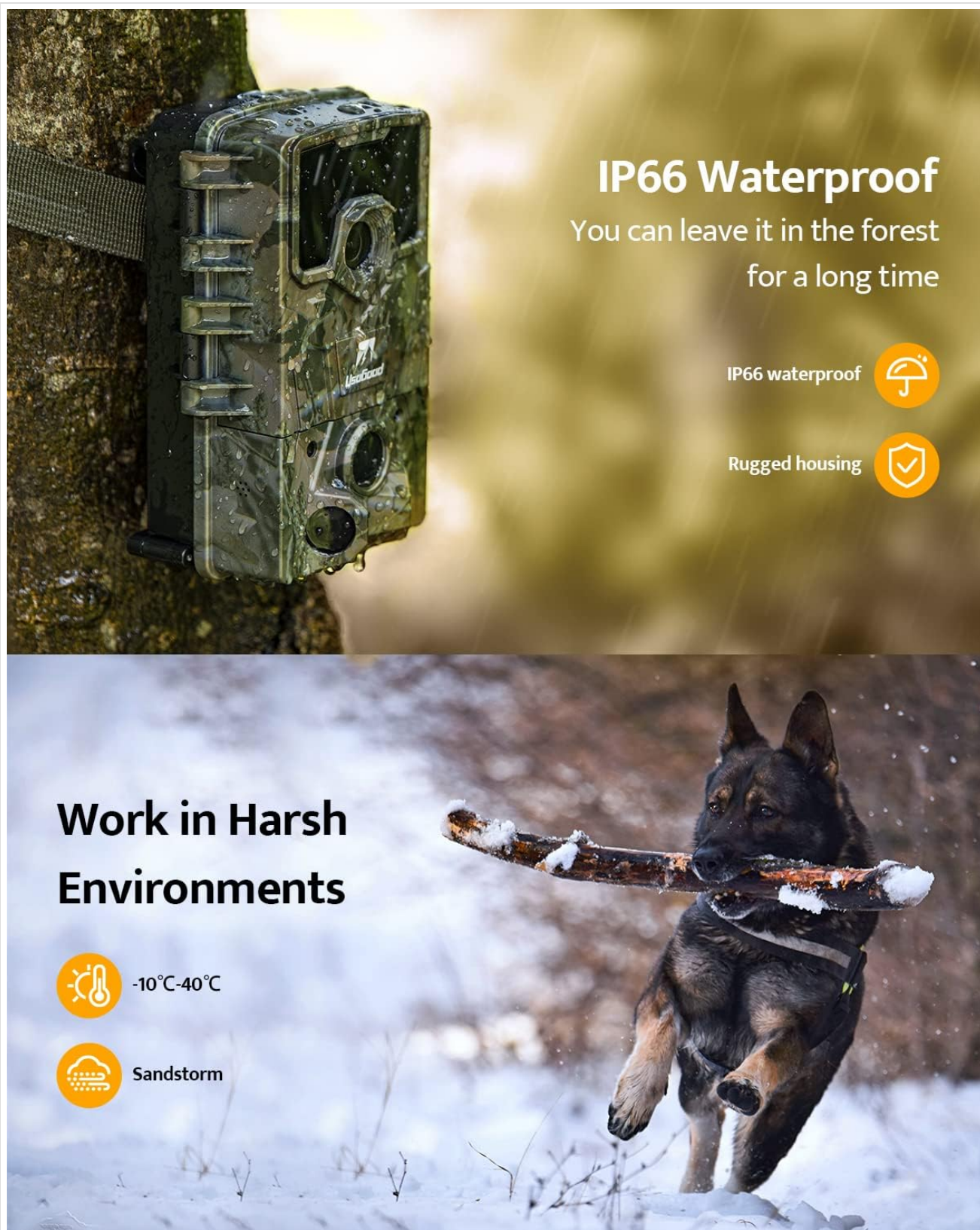
A standard SD card (up to 32GB) is required to store photos and videos.

1. With the camera open, locate the SD card slot.
2. Insert a formatted SD card into the slot until it clicks into place. Ensure the card is inserted in the correct orientation.
3. To remove, gently push the card in until it springs out.

3. Mounting the Camera

The camera can be mounted using the included mounting belt or screw-in method.

- **Belt Mount:** Thread the mounting belt through the slots on the back of the camera. Secure the camera to a tree or pole at the desired height and angle.
- **Screw-In Mount:** Use a compatible screw mount (not included) to attach the camera to a wall or other flat surface.



IP66 Waterproof

You can leave it in the forest
for a long time

IP66 waterproof



Rugged housing



Work in Harsh Environments



-10°C-40°C



Sandstorm

The Usogood TC30 Trail Camera securely mounted to a tree using the provided strap, demonstrating its camouflage design blending with the environment.

OPERATING INSTRUCTIONS

1. Powering On/Off

To power on the camera, slide the mode switch from OFF to ON or TEST. To power off, slide the switch to OFF.

2. Mode Selection

The camera has three operating modes:

- **OFF:** Camera is powered off.
- **ON:** Camera is in active monitoring mode. It will capture photos/videos based on motion detection and configured settings. The screen will turn off after a few seconds to conserve power.
- **TEST:** Allows you to view the camera's settings, playback captured media, and manually trigger the camera. The screen remains active in this mode.

3. Basic Settings (in TEST mode)

Navigate the menu using the control buttons to adjust settings such as:

- **Mode:** Select Photo, Video, or Photo+Video.
- **Photo Size:** Set photo resolution (e.g., 24MP).
- **Video Size:** Set video resolution (e.g., 1080P).
- **PIR Interval:** Time delay between detections.
- **Sensitivity:** Adjust PIR sensor sensitivity.
- **Time Stamp:** Enable/disable date and time overlay on media.
- **Time-Lapse:** Configure time-lapse capture (if desired).
- **Loop Recording:** Enable auto overwrite when memory card is full.

24MP HD Image Resolution

Capture more vivid details

16MP

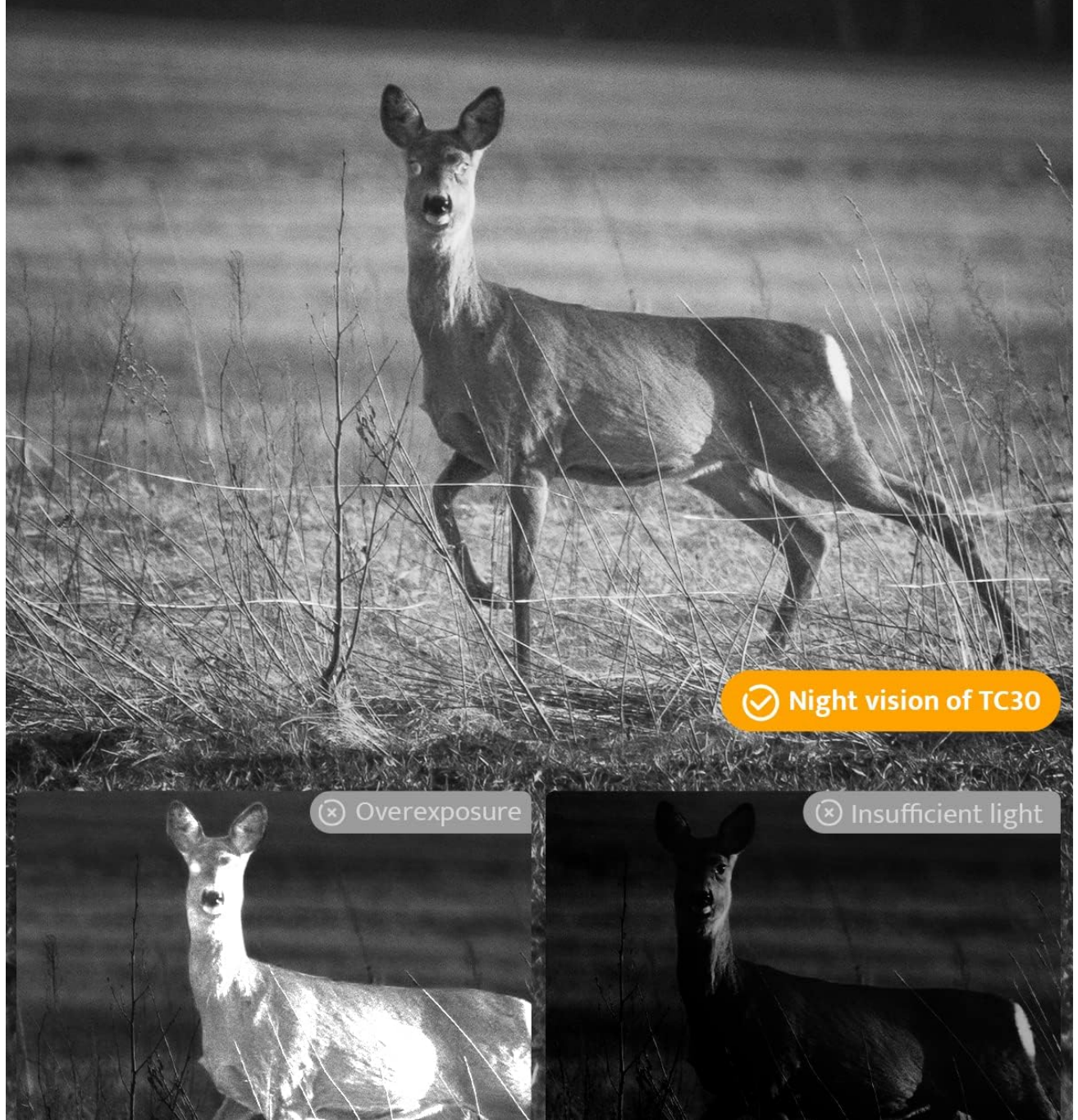
24MP



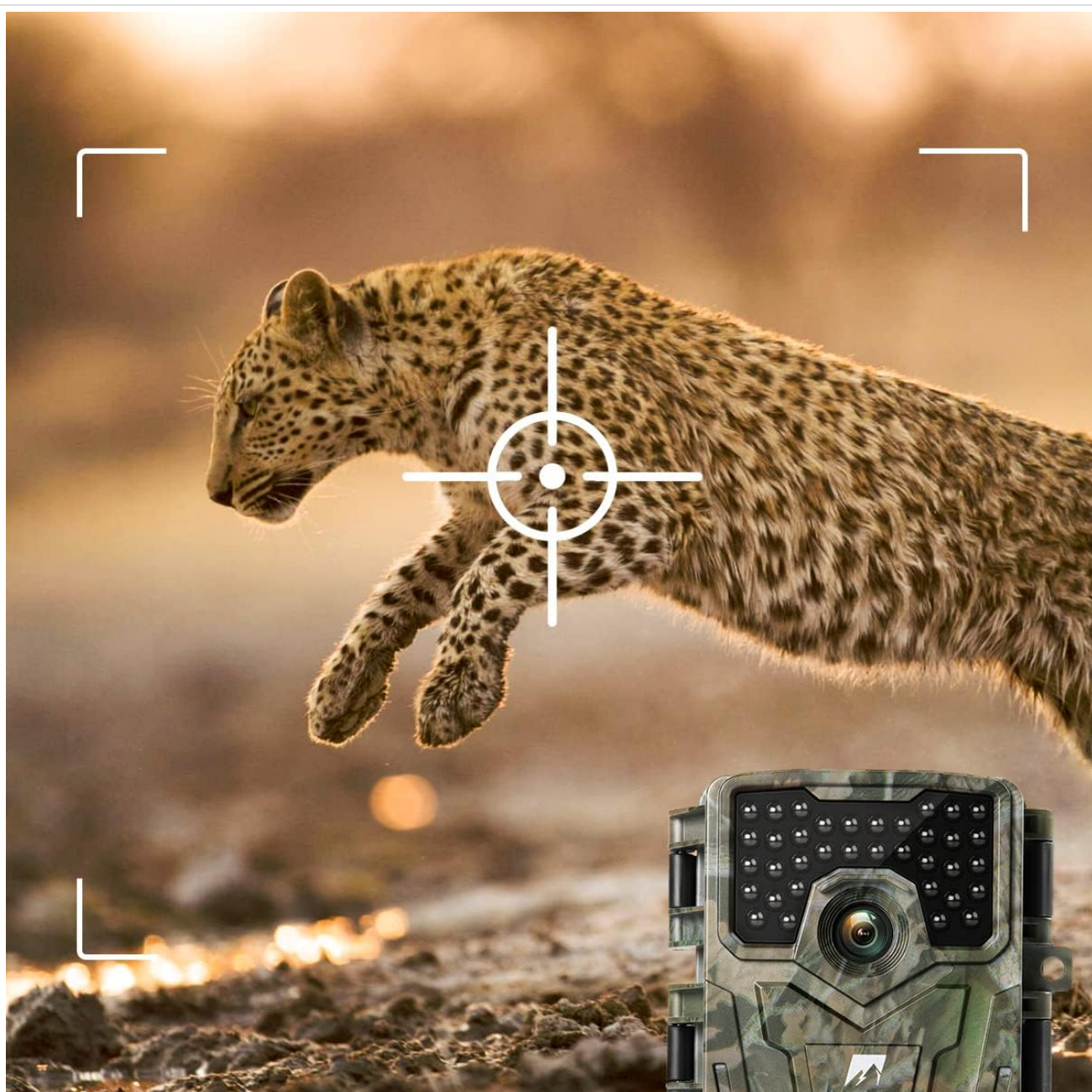
Visual comparison demonstrating the enhanced detail captured by the 24MP resolution setting of the Usogood TC30 Trail Camera compared to 16MP.

Super Night Vision

36pcs 850NM infrared LEDs provide clear night vision



An image illustrating the clear night vision provided by the Usogood TC30 Trail Camera, highlighting the effectiveness of its 850nm infrared LEDs in low-light conditions.



0.3s Fast Trigger Speed

Not to miss every wonderful moment

This image demonstrates the Usogood TC30 Trail Camera's rapid 0.3-second trigger speed, capable of capturing fast-moving subjects like a leopard in mid-air.



Time Lapse

Helps you observe how things change



An illustration of the time-lapse function of the Usogood TC30 Trail Camera, showing sequential images of a plant growing over 7, 14, and 30 days, useful for observing gradual changes.

Automatically Overwritten

The file will be automatically overwritten when the SD is full



This image depicts the automatic overwrite function of the Usogood TC30 Trail Camera, where older files are replaced by new ones when the SD card reaches full capacity, ensuring continuous recording.

4. Viewing Media

In TEST mode, you can review captured photos and videos directly on the camera's screen or by connecting the camera to a computer using the provided USB cable.

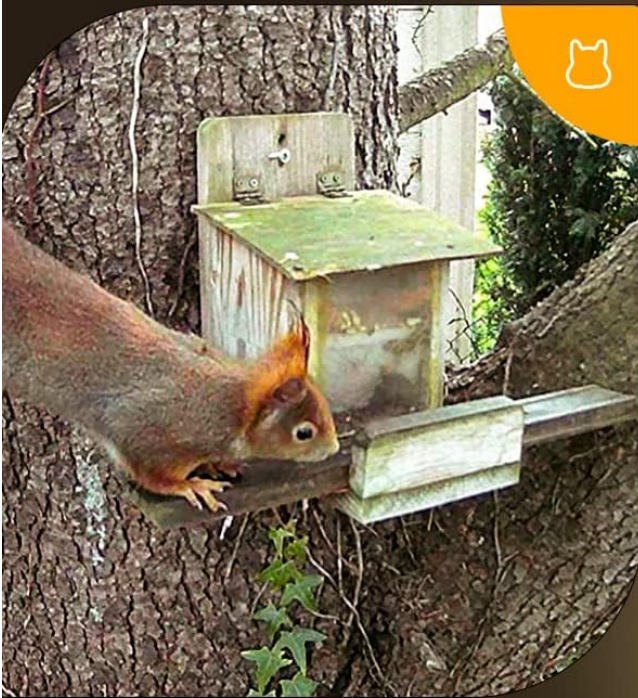
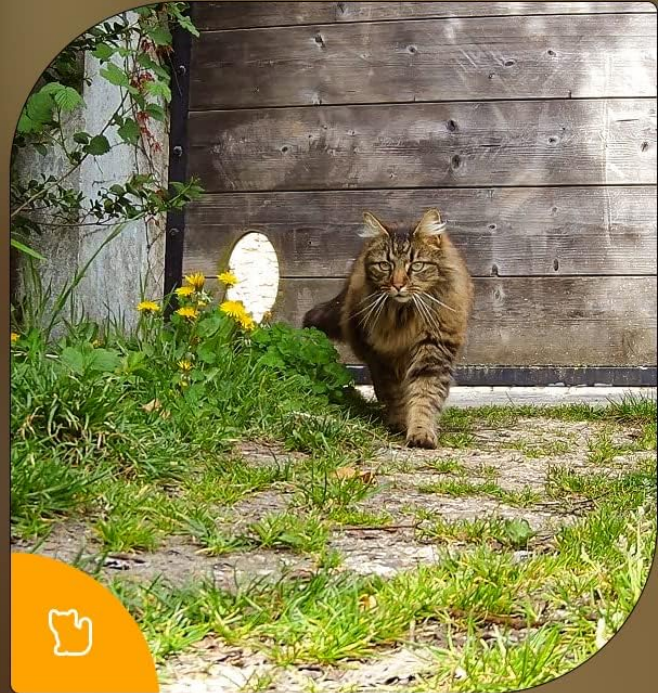
- **On Camera:** Use the navigation buttons to browse through files.
- **Via USB:** Connect the camera to your computer. The camera will appear as a removable disk. You can then access the files.
- **SD Card Reader:** Remove the SD card and insert it into a compatible card reader connected to your

computer.

MAINTENANCE

- **Cleaning:** Use a soft, dry cloth to clean the camera lens and body. Avoid abrasive cleaners or solvents.
- **Battery Replacement:** Replace all 8 AA batteries when the low battery indicator appears. Do not mix old and new batteries or different battery types.
- **SD Card Management:** Regularly format your SD card to maintain optimal performance and prevent data corruption. Back up important files before formatting.
- **Storage:** When not in use for extended periods, remove batteries and store the camera in a cool, dry place.

Using hunting cameras in different environments



The Usogood TC30 Trail Camera is shown operating reliably in challenging weather, including snow and sandstorm conditions, demonstrating its IP66 waterproof rating and robust design.

TROUBLESHOOTING

Problem	Possible Cause	Solution
---------	----------------	----------

Camera does not power on.	Low or dead batteries; incorrect battery polarity; faulty batteries.	Replace all 8 AA batteries with new ones, ensuring correct polarity. Test with a 6V external power source if available.
No photos/videos captured.	SD card full or not inserted correctly; incorrect mode (e.g., in TEST mode); PIR sensitivity too low; camera not detecting motion.	Check SD card, format if necessary. Ensure camera is in ON mode. Adjust PIR sensitivity. Verify camera placement for optimal motion detection.
Poor night vision images.	Obstruction in front of IR LEDs; subject too far; low battery.	Clear any obstructions. Ensure subject is within 65ft range. Replace batteries.
Camera continuously records.	PIR sensitivity too high; camera facing moving objects (branches, water).	Reduce PIR sensitivity. Reposition camera to avoid false triggers.
Date/Time stamp is incorrect.	Date/Time not set or reset after battery change.	Enter TEST mode and set the correct date and time in the camera settings.

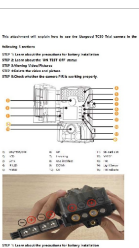
WARRANTY AND SUPPORT



Usogood offers a 2-year protection plan for repair services and a 3-month return policy for quality assurance. We are committed to continuously updating and optimizing our products and services based on customer feedback. For technical support or warranty claims, please contact Usogood customer service. Refer to the contact information provided with your purchase or visit the official Usogood website.

- **2 Years Protection:** Repair services provided within 2 years of purchase.
- **3-Month Return:** Hassle-free returns within 3 months for product quality issues.

© 2024 Usogood. All rights reserved.

Related Documents - TC30 1080P

	<p>Usogood TC30 Trail Camera User Guide</p> <p>A guide on how to use the Usogood TC30 Trail Camera, covering battery installation, device status, viewing media, deleting files, and checking PIR functionality.</p>
---	--

	<p>Usogood DL502 Trail Camera User Manual</p> <p>Comprehensive user manual for the Usogood DL502 Trail Camera, covering setup, functions, WiFi connection, app control, and troubleshooting. Learn how to install and operate your trail camera for wildlife monitoring.</p>
	<p>Usogood TC30 Trail Camera User Manual</p> <p>User manual for the Usogood TC30 Trail Camera, covering package contents, features, setup, installation, main functions, technical specifications, service, and warranty.</p>
	<p>Usogood TC30 Trail Camera User Manual</p> <p>Comprehensive user manual for the Usogood TC30 Trail Camera, detailing setup, features, technical specifications, and support information.</p>
	<p>TC30 Trail Camera User Manual - Usogood Hunting Camera</p> <p>Detailed user manual for the Usogood TC30 Trail Camera. This guide covers setup, operation, modes, memory card usage, mounting, connections, and technical specifications for this motion-activated wildlife camera.</p>
	<p>Usogood RS20 Solar Integrated Hunting Camera Instruction Manual</p> <p>Detailed instruction manual for the Usogood RS20 solar-integrated hunting camera, covering setup, operation, features, and troubleshooting for wildlife monitoring and security.</p>