

BONTEC MWS03-WH

BONTEC Gas Spring Mobile Stand Up Desk User Manual

Model: MWS03-WH

INTRODUCTION

Thank you for choosing the BONTEC Gas Spring Mobile Stand Up Desk. This versatile and ergonomic desk is designed to provide a flexible workspace, allowing you to easily transition between sitting and standing positions. Its mobile design with rolling casters makes it ideal for various environments, from home offices to professional settings. This manual provides detailed instructions for assembly, operation, maintenance, and troubleshooting to ensure optimal use and longevity of your desk.



Figure 1: BONTEC Gas Spring Mobile Stand Up Desk (White)

SAFETY INFORMATION

Please read and understand all safety warnings before assembly and use. Failure to follow these instructions may result in injury or damage to the product.

- Be careful when adjusting the height of the desk and ensure it is stable.
- Do not carry a load over 33 lbs (15 kg) on the desktop.
- Do not move the desk when there are objects on it to prevent items from falling or the desk from tipping.
- Always use the desk on a flat and stable surface.
- Keep children and pets away from the desk during operation and adjustment.

PACKAGE CONTENTS

Before beginning assembly, verify that all parts listed below are present and undamaged. If any parts are missing or damaged, please contact BONTEC customer support.



Figure 2: All components included in the package.

- Desktop (MDF material)
- Gas Spring Column
- H-shaped Frame Base (Alloy Steel)
- Rolling Casters (4 pieces, with 2 lockable)
- Mobile Desk Hook
- Assembly Hardware (screws, wrench, tools)
- Instruction Manual

ASSEMBLY INSTRUCTIONS

Follow these steps carefully to assemble your BONTEC Gas Spring Mobile Stand Up Desk. It is recommended to assemble on a soft, clean surface to prevent scratches.

1. **Attach Casters to Base:** Secure the four rolling casters into the designated holes on the H-shaped frame base. Ensure two of the casters with locking mechanisms are placed on the same side for easier access.
2. **Connect Gas Spring Column to Base:** Align the bottom of the gas spring column with the center mounting point on the H-shaped base. Use the provided screws and tools to firmly attach the column to the base.
3. **Attach Desktop to Gas Spring Column:** Carefully place the desktop onto the top of the gas spring column, aligning the pre-drilled holes. Secure the desktop using the appropriate screws. Ensure the height adjustment lever is accessible.
4. **Install Mobile Desk Hook:** Attach the mobile desk hook to the side of the desktop as desired, using the provided hardware.
5. **Final Check:** Once assembled, gently test the desk for stability and ensure all connections are tight.

Product Dimensions



Figure 3: Illustration of attaching the base to the main column.

Generous Desktop Storage



Figure 4: Illustration of attaching the desktop to the gas spring column.

OPERATING INSTRUCTIONS

Height Adjustment

The BONTEC desk features a gas spring mechanism for smooth and effortless height adjustment, allowing you to switch between sitting and standing positions.

- **To Raise the Desk:** Press the height adjustment lever located under the desktop. The pneumatic spring will provide an upward force, lifting the desktop. Release the lever at your desired height.
- **To Lower the Desk:** Press the height adjustment lever and simultaneously apply downward pressure on the desktop. Release the lever when the desk reaches your desired lower height.

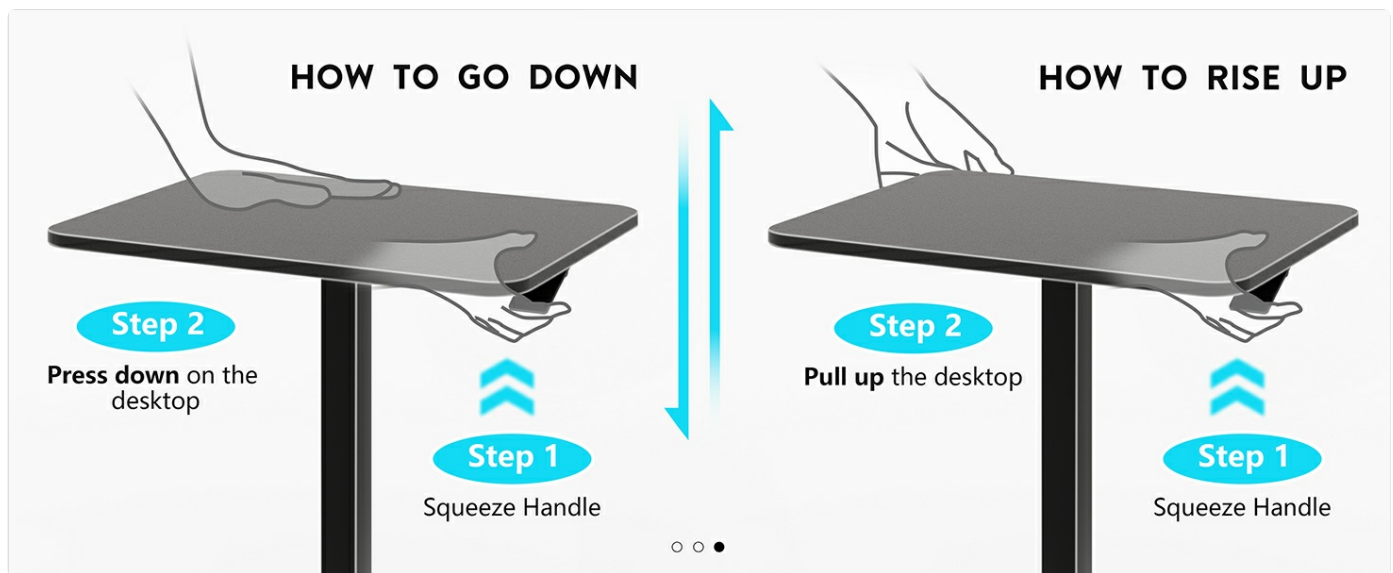


Figure 5: Height adjustment mechanism operation.

Mobility and Locking Casters

The desk is equipped with four rolling casters for easy movement. Two of these casters have locking mechanisms to secure the desk in place.

- **To Move the Desk:** Ensure the caster locks are disengaged. Gently push or pull the desk to your desired location.
- **To Lock the Desk in Place:** Press down on the locking levers on the two lockable casters until they click into position. This will prevent the desk from rolling.
- **To Unlock the Desk:** Lift the locking levers on the two lockable casters to disengage the locks.



Figure 6: Detail of the lockable rolling casters.

MAINTENANCE

Regular maintenance will help prolong the life and appearance of your BONTEC desk.

- **Cleaning:** Wipe the desktop and frame with a damp cloth. For stubborn marks, a mild soap solution can be used, followed by wiping with a clean, dry cloth. Avoid harsh chemicals or abrasive cleaners.
- **Casters:** Periodically check the casters for any accumulated dust or debris and clean as necessary to ensure smooth rolling.
- **Hardware:** Occasionally check all screws and fasteners to ensure they remain tight. Retighten if necessary.

- **Gas Spring:** The gas spring mechanism is designed for long-term use and generally requires no special maintenance. Avoid applying excessive force beyond the recommended weight capacity.

TROUBLESHOOTING

Problem	Possible Cause	Solution
Desk does not adjust height smoothly.	Excessive weight on desktop; gas spring issue; lever not fully engaged.	Ensure weight is within 33 lbs (15 kg) limit. Press the lever firmly. If issue persists, contact support.
Desk wobbles or is unstable.	Loose connections; uneven surface; casters not locked.	Check and tighten all assembly screws. Ensure desk is on a flat surface. Lock the casters if stationary.
Casters do not roll freely or lock.	Debris in casters; lock mechanism jammed.	Clean any debris from caster wheels. Ensure lock levers are fully engaged or disengaged.

SPECIFICATIONS



Figure 7: Key dimensions of the BONTEC Mobile Stand Up Desk.

Feature	Detail
Brand	BONTEC
Model Number	MWS03-WH
Color	White
Product Dimensions (D x W x H)	25.5" x 17.7" x 28.3" - 44" (adjustable height)
Desktop Material	MDF
Base Material	Alloy Steel
Lifting Mechanism	Pneumatic Gas Spring

Feature	Detail
Maximum Weight Capacity	33 lbs (15 kg)
Included Components	Mobile Desk Hook
Assembly Required	Yes (Recommended 1 person)

WARRANTY AND SUPPORT

For warranty information, technical support, or to order replacement parts, please contact BONTEC customer service. Refer to the contact information provided with your product packaging or visit the official BONTEC website.
BONTEC Store: [Visit the BONTEC Store on Amazon](#)

© 2025 BONTEC. All rights reserved.

Documents - BONTEC – MWS03-WH



[\[pdf\]](#) User Manual Installation Guide Instructions Parts List

20210909 Informazioni sulla sicurezza BONTEC Ripiano Superiore dello Schermo 40cm Scaffale superiore per TV Regolabile del Monitor Dispositivi di Streaming Box Altoparlanti e Decorazioni La Casa Amazon it Elettronica A16NWNi0XSL ref dp product quick view m media amazon images I |||

SAFETY Multi Language MANUAL CONTENT INHALT CONTENTU CONTENIDO CONTENUTO INHOUD CONTENTU INNEHLL ZAW ... re to prevent breaking. Model GDM7501/ GDM7502/ GDM7503/ GDM7504/ GWM01/ GWM02/ GWM02-v02/ MWS03/ **MWS03-WH**/ MWS04/ MWS04-WH/ MD04/ MD04-W Caution The above-mentioned products contain a high-pres...

lang:en score:21 filesize: 1.59 M page_count: 24 document date: 2024-09-19