

## PDP 049-023-RW

# PDP Gaming REMATCH Enhanced Wired Controller User Manual

Model: 049-023-RW

Brand: PDP

## 1. PRODUCT OVERVIEW

The PDP Gaming REMATCH Enhanced Wired Controller is officially licensed for Xbox Series X|S, Xbox One, and PC/Windows. This controller is designed to provide enhanced features and customizability for an optimized gaming experience. It includes mappable back buttons, advanced customization options via the PDP Control Hub app, textured grips, and integrated audio controls for efficient gameplay and communication.

The controller connects via an 8-foot USB-C cable, ensuring a lag-free experience without the need for batteries.

## 2. KEY FEATURES

- **Customizable Settings:** Utilize the free PDP Control Hub App to re-map buttons, re-configure triggers, adjust dead zones, and update controller firmware.
- **Integrated Audio Controls:** Link your headset using the 3.5mm audio jack. Mute your microphone by double-tapping the "Function" button. Adjust game and chat audio on-the-fly using the controls located on the D-pad.
- **Programmable Back Buttons:** Two programmable back buttons allow for mapping of controller functions for quicker responses and improved efficiency.
- **Wired Compatibility:** Features an 8-foot detachable USB-C cable for unlimited playtime without batteries and broad compatibility with Xbox Series X|S, Xbox One, and Windows 10/11.
- **Dedicated Share Button:** Easily share captured images and videos with the dedicated share button located in the center of the controller.

## 3. SETUP GUIDE

### 3.1 Connecting the Controller

1. Connect the included 8-foot USB-C cable to the USB-C port on the top of the controller.
2. Plug the other end of the USB-C cable into an available USB port on your Xbox console (Xbox Series X|S, Xbox One) or PC (Windows 10/11).

3. The controller will automatically power on and connect to your device.

## 3.2 Installing the PDP Control Hub App

To unlock the full customization potential of your controller, download the free PDP Control Hub App from the Microsoft Store on your Xbox console or Windows PC. This app allows for button re-mapping, trigger configuration, dead zone adjustments, and firmware updates.

## 4. OPERATING INSTRUCTIONS

---

### 4.1 Basic Controls

The controller features standard Xbox button layouts including A, B, X, Y buttons, D-pad, left and right analog sticks, View button, Menu button, and Share button. It also includes left and right bumpers (LB, RB) and triggers (LT, RT).

### 4.2 Customizing Back Buttons

The two programmable back buttons (located on the underside of the controller) can be mapped to any standard controller function using the PDP Control Hub App. This allows for quick access to frequently used actions without removing your thumbs from the analog sticks.

### 4.3 Audio Controls

- **Headset Connection:** Plug your 3.5mm compatible headset into the audio jack at the bottom of the controller.
- **Mic Mute:** Double-tap the "Function" button (located below the right analog stick) to quickly mute or unmute your microphone.
- **Volume Adjustment:** Use the D-pad in conjunction with the "Function" button to adjust game and chat audio levels.

### 4.4 Sharing Content

Press the dedicated Share button (located in the center of the controller, below the Xbox button) to capture screenshots or record game clips, depending on your console or PC settings.

## 5. MAINTENANCE

---

### 5.1 General Care

Keep the controller clean by wiping it with a dry, soft cloth. Avoid using harsh chemicals or abrasive materials. Store the controller in a cool, dry place when not in use to prevent damage.

### 5.2 Firmware Updates

Regularly check for firmware updates via the PDP Control Hub App to ensure optimal performance and access to the latest features. Follow the on-screen instructions within the app to perform any available updates.

## 6. TROUBLESHOOTING

---

If you encounter any issues with your PDP Gaming REMATCH controller, please consider the following:

- **Controller Not Responding:** Ensure the USB-C cable is securely connected to both the controller and your console/PC. Try plugging the cable into a different USB port.
- **Audio Issues:** Verify your headset is fully plugged into the 3.5mm jack. Check the in-game and console/PC audio settings. Ensure the mic is not muted via the controller's function button.
- **Customization Problems:** Make sure the PDP Control Hub App is up to date. Restart the app and reconnect the controller.
- **Firmware Update Failure:** Ensure a stable internet connection during updates. Do not disconnect the controller during the update process.

For further assistance, refer to the official PDP support website or contact customer service.

## 7. SPECIFICATIONS

Feature	Detail
Model Number	049-023-RW
Compatibility	Xbox Series X S, Xbox One, PC (Windows 10/11)
Connectivity	Wired (8-foot detachable USB-C cable)
Audio Jack	3.5mm
Dimensions	3.23 x 6.89 x 6.89 inches
Weight	10.56 ounces (approx. 299g)
Manufacturer	PDP
Release Date	October 12, 2022

## 8. OFFICIAL PRODUCT VIDEOS

### Introducing the all new REMATCH Controller for Xbox

Your browser does not support the video tag.

This video provides an official introduction to the PDP REMATCH Controller for Xbox, highlighting its design and key features.

### PDP Licensed Gaming Accessories Xbox Nintendo Playstation

Your browser does not support the video tag.

An overview video showcasing various PDP licensed gaming accessories, including the REMATCH controller, across different platforms.

## 9. PRODUCT IMAGES



**Figure 9.1:** Front view of the PDP Gaming REMATCH Enhanced Wired Controller in Radial White. This image highlights the main face of the controller, including the Xbox button, analog sticks, D-pad, and action buttons.

# PROGRAM BACK BUTTONS

For Quicker Responses



**Figure 9.2:** Back view of the controller, showcasing the two programmable back buttons and textured grips designed for enhanced control and comfort during gameplay.

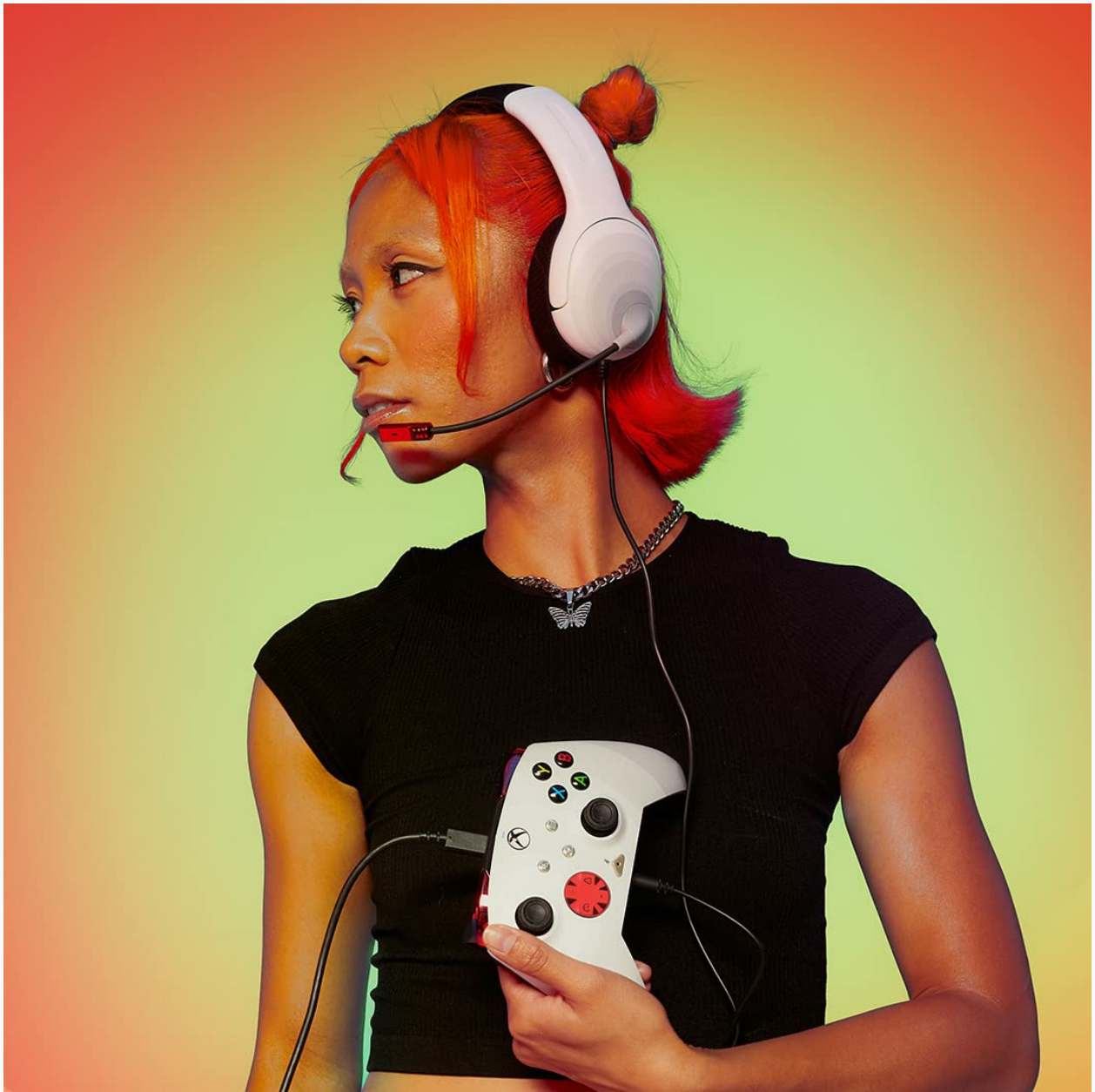
# DETACHABLE CABLE

Versatile 8-Foot USB-C



**Figure 9.3:** A visual representation of the PDP Control Hub App interface, demonstrating how users can customize controller settings such as trigger sensitivity and dead zones for personalized gameplay.





**Figure 9.4:** Close-up view of the controller's D-pad and the dedicated function button, illustrating the integrated on-board controls for quick audio adjustments and mic muting.



**Figure 9.5:** An angled shot emphasizing the programmable back buttons on the controller's underside, designed for quicker responses and strategic advantage in games.



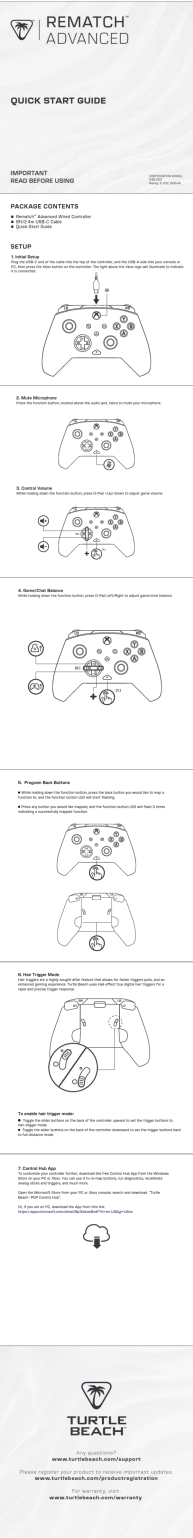




**Figure 9.6:** A side profile of the controller, clearly showing the detachable 8-foot USB-C cable, which provides a reliable, lag-free wired connection.

## 10. WARRANTY AND SUPPORT

For information regarding product warranty, technical support, or replacement parts, please visit the official PDP support website or contact their customer service department. Keep your purchase receipt as proof of purchase for any warranty claims.



 <p>The image shows the cover of the Turtle Beach Rematch Advanced Wired Controller Quick Start Guide. The cover is white with a light blue and grey abstract background. At the top left is the Turtle Beach logo. Below it, the text 'REMATCH ADVANCED' is prominently displayed. Underneath that is 'QUICK START GUIDE'. A section titled 'IMPORTANT READ BEFORE USING' is visible. The 'PACKAGE CONTENTS' section lists the Rematch Advanced Wired Controller, USB-C Cable, and Quick Start Guide. The 'SETUP' section includes steps for: 1. Initial Setup (connecting the controller to the console or PC), 2. Mute Microphone (pressing the mute button), 3. Control Volume (pressing the volume buttons), 4. Game/Chat Balance (pressing the Game/Chat Balance button), 5. Program Back Buttons (pressing the back buttons), 6. Hair Trigger Mode (pressing the hair trigger buttons), and 7. Control Hub App (downloading the app). At the bottom, there is a Turtle Beach logo and contact information for support and warranty.</p>	<p><a href="#">Turtle Beach Rematch Advanced Wired Controller Quick Start Guide</a></p> <p>A concise guide to setting up and using the Turtle Beach Rematch Advanced Wired Controller for Xbox Series X S and PC, including button mapping, volume control, and hair trigger mode.</p>
 <p>The image shows the cover of the PDP Wired Controller for Xbox Quick Start Guide. The cover is white with a light blue and grey abstract background. At the top left is the PDP logo. Below it, the text 'PDP WIRELESS' is prominently displayed. Underneath that is 'QUICK START GUIDE'. A section titled 'IMPORTANT READ BEFORE USING' is visible. The 'PACKAGE CONTENTS' section lists the PDP Wireless Controller, USB-C Cable, and Quick Start Guide. The 'SETUP' section includes steps for: 1. Initial Setup (connecting the controller to the console or PC), 2. Mute Microphone (pressing the mute button), 3. Control Volume (pressing the volume buttons), 4. Game/Chat Balance (pressing the Game/Chat Balance button), 5. Program Back Buttons (pressing the back buttons), 6. Hair Trigger Mode (pressing the hair trigger buttons), and 7. Control Hub App (downloading the app).</p>	<p><a href="#">PDP Wired Controller for Xbox Quick Start Guide</a></p> <p>A quick start guide for the PDP Wired Controller for Xbox, covering initial setup, volume control, microphone muting, game/chat balance, and customization via the PDP Control Hub app. Includes warranty information in multiple languages.</p>
 <p>The image shows the cover of the PDP Wired Controller for Xbox Quick Start Guide. The cover is white with a light blue and grey abstract background. At the top left is the PDP logo. Below it, the text 'PDP WIRELESS' is prominently displayed. Underneath that is 'QUICK START GUIDE'. A section titled 'IMPORTANT READ BEFORE USING' is visible. The 'PACKAGE CONTENTS' section lists the PDP Wireless Controller, USB-C Cable, and Quick Start Guide. The 'SETUP' section includes steps for: 1. Initial Setup (connecting the controller to the console or PC), 2. Mute Microphone (pressing the mute button), 3. Control Volume (pressing the volume buttons), 4. Game/Chat Balance (pressing the Game/Chat Balance button), 5. Program Back Buttons (pressing the back buttons), 6. Hair Trigger Mode (pressing the hair trigger buttons), and 7. Control Hub App (downloading the app).</p>	<p><a href="#">PDP Wired Controller for Xbox Quick Start Guide</a></p> <p>A quick start guide for the PDP Wired Controller for Xbox, detailing setup, volume control, microphone muting, chat balance, and customization options via the PDP Control Hub App.</p>



Get started with your PDP Wired Controller for Xbox. This guide covers initial setup, microphone mute, volume control, game/chat balance, and the PDP Control Hub app. Includes limited warranty details and legal information.

## Documents - PDP – 049-023-RW

[illegible]

[\[pdf\]](#)

Herunterladen Computing Software Gaming Controller PDP XSX Rematch Radial White Wired Xbox  
Series X NewStore GmbH Multimedia Support index dispatch attachments getfile attachment id 21787  
newstore.ch |||

PDP Rematch Advanced Schwarz, Rot, Wei USB Gamepad Analog / Digital PC, Xbox One, Xbox Series S, Xbox Series X Marke : PDP Produktname : Rematch Advanced Artikel-Code: **049-023-RW** PDP Rematch Advanced. Gertetyp: Gamepad, Gamingplattformen untersttzt: PC, Xbox One, Xbox Series S, Xbox Series X, Gam... lang:en **score:20** filesize: 274.89 K page\_count: 2 document date: 2024-08-19

**EMBATON Mixed Controller: NO QSG**

**1. Initial Setup**

- A. To use the controller, plug the USB cable into the Nintendo Switch. The controller should automatically pair with the device.
- B. If you cannot pair the controller, go to the System Settings > Controllers and Sensors > Change Grip/Order.
- C. When prompted, press L and R on your controller to connect.

Note: You can also pair the controller directly from the Controllers Menu found on the Nintendo Switch Home Screen and select Change Grip/Order.

**2. Audio Setup**

- A. Plug the 3.5mm jack of your headset or headphones directly into the 3.5mm port on the controller.
- B. The Nintendo Switch only supports audio output at 5.1ch. When connecting your headset or headphones to the controller, audio will still be processed down to 5.1ch. Any 7.1ch, etc., will be lost.
- C. Note that, when connecting to a Nintendo Switch audio device, only the first device will have audio output.
- D. You will still be prompted by the Nintendo Switch to reconnect the controller. Press L and R to connect and then audio will start playing through the headset/headphones.
- E. If you do not hear sound after connecting your controller, please go to the Nintendo Switch Settings to make sure the volume is set properly.

Note: Under the System Settings, there is a setting called "Audio" that allows headphones to be used, but not to be enabled. When enabled, you can still hear out of the speakers when using a headset or using a disconnected headset, but the volume buttons are ignored, and this setting is manually locked to "Off." To disable this setting properly, select System Settings > Nintendo Switch Settings > Audio > Headphones.

**3. Volume Controls**

- A. To adjust the controller's volume, hold down the "Home" button and press the D-pad down on the D-pad.
- B. You can only mute your controller and headphones by pressing the "Home" button.
- C. Note: To correct, press the "Home" button once again.
- D. Note: The volume controls only adjust the volume output to the controller, and not the volume level of the Nintendo Switch OS. Adjust the Nintendo Switch OS volume in the device settings.

**4. Preparing the Back Buttons**

## REMATCH Wired Controller for Nintendo Switch: Quick Start Guide

Quick start guide for the REMATCH Wired Controller for Nintendo Switch, covering initial setup, audio configuration, volume controls, and back button programming.

lang:en score:14 filesize: 69.82 K page count: 2 document date: 2023-04-19