

Manuals+

[Q & A](#) | [Deep Search](#) | [Upload](#)

[manuals.plus](#) /

- › [Vanance](#) /
- › [Vanance 3 Inch Smart Recessed Light \(10-Pack\) Instruction Manual](#)

Vanance ZJ-TMDB1L-RGBWW

Vanance 3 Inch Smart Recessed Light (10-Pack) Instruction Manual

Model: ZJ-TMDB1L-RGBWW

1. INTRODUCTION

Thank you for choosing the Vanance 3 Inch Smart Recessed Light 10-Pack. These RGBCW LED downlights offer tunable white light from 2700K to 6500K, dimmable functionality, and a wide spectrum of multicolor options. Designed for both new construction and remodel installations, these lights provide versatile smart lighting solutions for your home or office. This manual provides detailed instructions for installation, operation, and maintenance to ensure optimal performance and longevity of your product.



Image: A 10-pack of Vanance 3-inch smart recessed lights, showcasing their compact design and colorful illumination capabilities.

2. IMPORTANT SAFETY INFORMATION

WARNING: Risk of electric shock. Installation should only be performed by a qualified electrician or trained personnel.

- Always turn off power at the circuit breaker before installation, removal, or servicing.
- Ensure all electrical connections comply with local codes and ordinances.
- Do not install in locations where the operating temperature exceeds the specified range (-20°C to +45°C).
- This product is designed for indoor use only and is not water-resistant. Avoid installation in damp or wet locations.
- Do not attempt to modify or disassemble the light fixture. There are no user-serviceable parts inside.
- Use only with 110V AC power supply.

3. PACKAGE CONTENTS

Verify that all components are present before beginning installation:

- 10 x Vanance 3" Smart Recessed Lights

- 10 x E26 Adapters (if applicable, for remodel installations)
- Instruction Manual (this document)

4. PRODUCT SPECIFICATIONS

Vanance 3 Inch Smart Recessed Light Specifications

Feature	Detail
Brand	Vanance
Model Number	ZJ-TMDB1L-RGBWW
Lighting Color	RGBCW (RGB, Warm White, Cool White)
Color Temperature	2700K-6500K Tunable White
Wattage	5 Watts (50W equivalent)
Brightness	500 Lumens
Efficiency	100 lumens per watt
Beam Angle	120°
Dimensions	Diameter: 3.85 inches (98mm), Height: 1.77 inches (45mm)
Mount Hole Size	2.96-3.14 inches (75-80mm)
Material	Aluminum
Voltage	100-240VAC, 50/60Hz
Connectivity Protocol	Bluetooth 4.2
APP Name	HaoDeng
Compatible Systems	Android 4.4 / iOS 9.0 or higher
Operating Temperature	-20°C to +45°C
Average Life	20,000 hours
Installation Type	New Construction or Remodel
Control Method	App, Remote (optional, not included in this pack)

DownLight Specification:

Lighting Color: RGCW (RGB, Warm White, Cool White)
Dimension: $\Phi 97 \times H 45 \text{mm}$ / $\Phi 3.8 \times H 1.77 \text{inch}$
Mount Hole Size: $\Phi 75-80 \text{mm}$ / $\Phi 2.96-3.14 \text{inch}$
Color Temperature: 2700K-6500K
Connection Methods: Bluetooth 4.2
APP Name: Hao Deng
Suitable System: Android 4.4 / IOS 9.0 or higher
Voltage: 100-240VAC, 50/60HZ
Lamp Material: PC and aluminum
Light Socket: E26

Power Factor : 0.6
Working Temperature: -20 to $+45^\circ \text{C}$
Average Life: 20000H
Beam Angle: 120°
Power: 5W
Light Luminous Flux: 500
LED Quantity:
RGB: 5050-0.15W*8
WW: 2835-0.5W*8,
CW: 2835-0.5W*8

Image: Detailed specification chart for the Vanance 3-inch smart recessed downlight, including dimensions, power, and connectivity information.

Dimensions And Detail

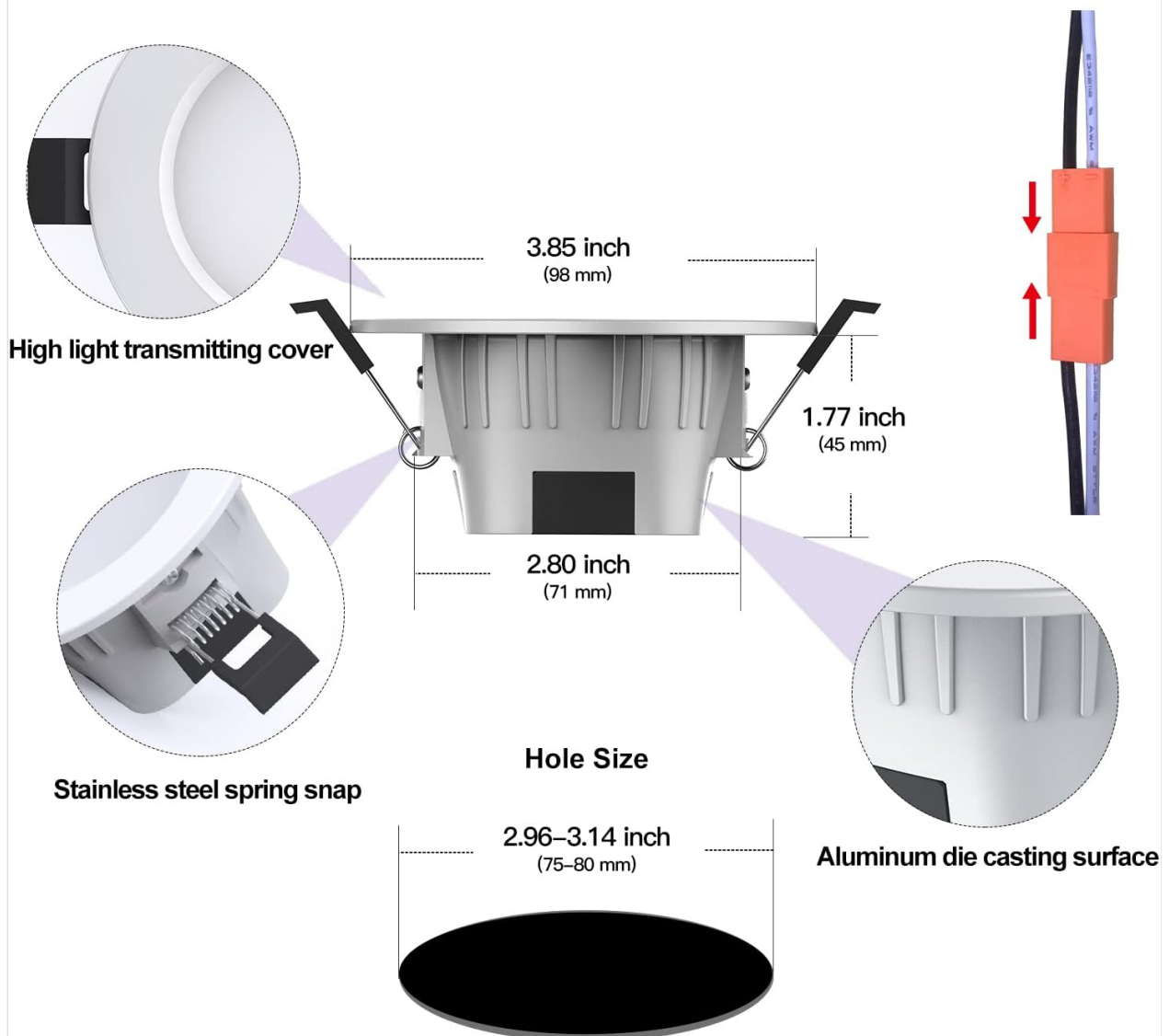


Image: Diagram illustrating the dimensions of the recessed light, including overall diameter, height, and recommended ceiling hole size (2.96-3.14 inches).

5. INSTALLATION INSTRUCTIONS

Follow these steps carefully for proper installation. If you are unsure about any step, consult a qualified electrician.

1. **Prepare the Ceiling:** Turn off power at the circuit breaker. Drill a hole in the ceiling with a diameter between 2.96 to 3.14 inches (75-80mm).
2. **Connect the E26 Adapter (if applicable):** If replacing an existing fixture, screw the provided E26 adapter into the existing socket. For new construction, proceed to direct wiring.
3. **Make Electrical Connections:** Connect the two connectors from the recessed light to your household wiring. Ensure a secure connection.
4. **Insert into Ceiling:** Push the spring clips on the sides of the recessed light upwards and insert the light into the ceiling hole.
5. **Secure the Light:** Release the spring clips. They will automatically snap back and hold the light flush against the ceiling.
6. **Restore Power:** Turn on power at the circuit breaker.

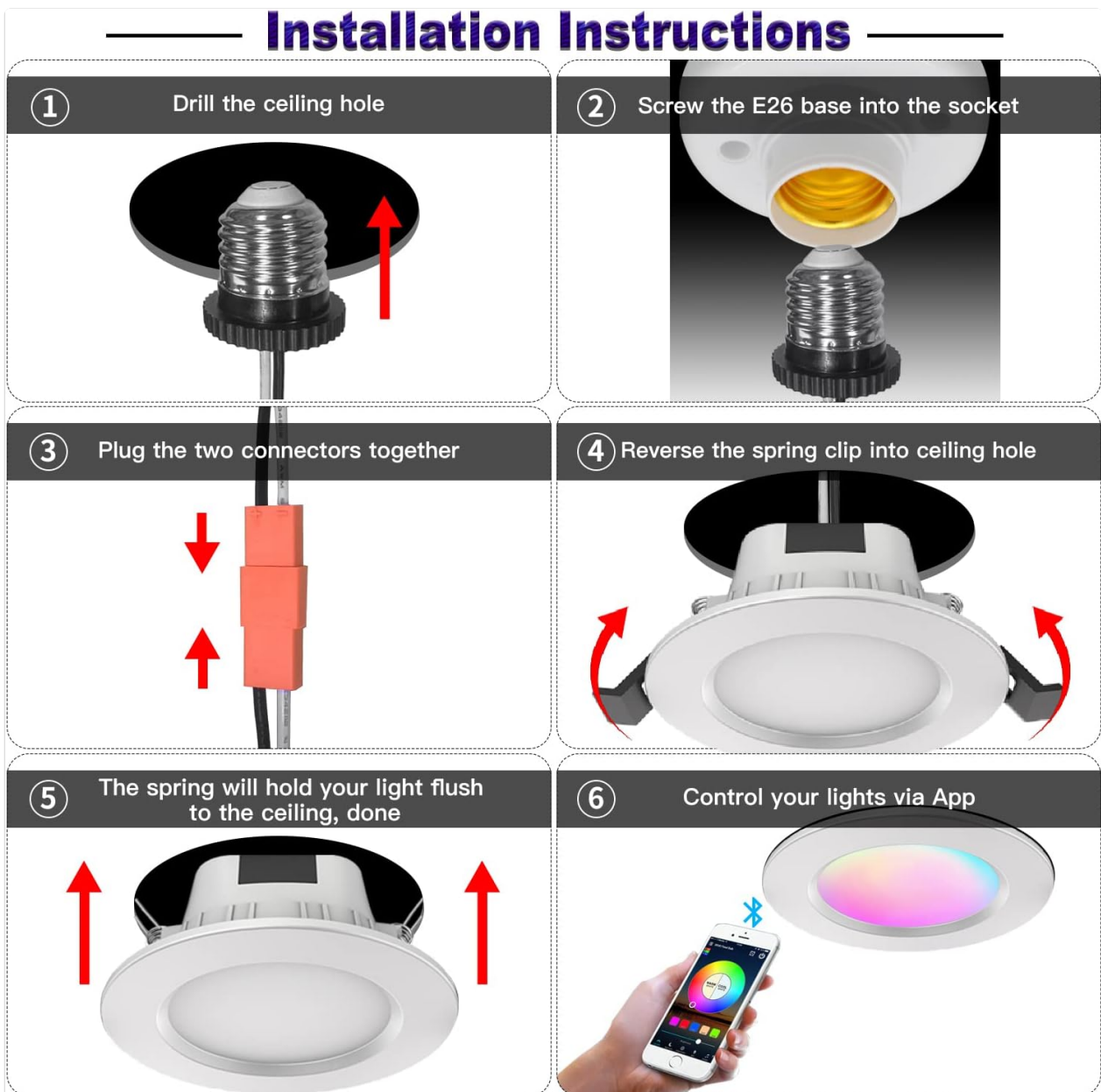


Image: Visual guide demonstrating the six steps for installing the recessed light, from drilling the hole to securing the fixture and connecting to the app.



Image: A single Vanance 3-inch smart recessed light seamlessly installed in a white ceiling, demonstrating its flush-mount appearance.

6. OPERATING INSTRUCTIONS

6.1. App Download and Connection

1. **Download the App:** Search for "HaoDeng" in the Apple App Store (iOS 9.0 or higher) or Google Play Store (Android 4.4 or higher) and download the application.
2. **Enable Bluetooth:** Ensure Bluetooth is enabled on your smartphone.
3. **Add Lights:** Open the HaoDeng app. The app will automatically detect nearby Vanance smart recessed lights. Follow the in-app instructions to add the lights. The setup process is designed to be simple.
4. **Bluetooth Mesh Network:** The smart recessed downlights work as a bridge, extending the signal for 20-30 meters. All connected lights automatically form a mesh network, allowing control of up to 64 lights simultaneously.

Easy Installation and Use

1



Open HaoDeng App

2

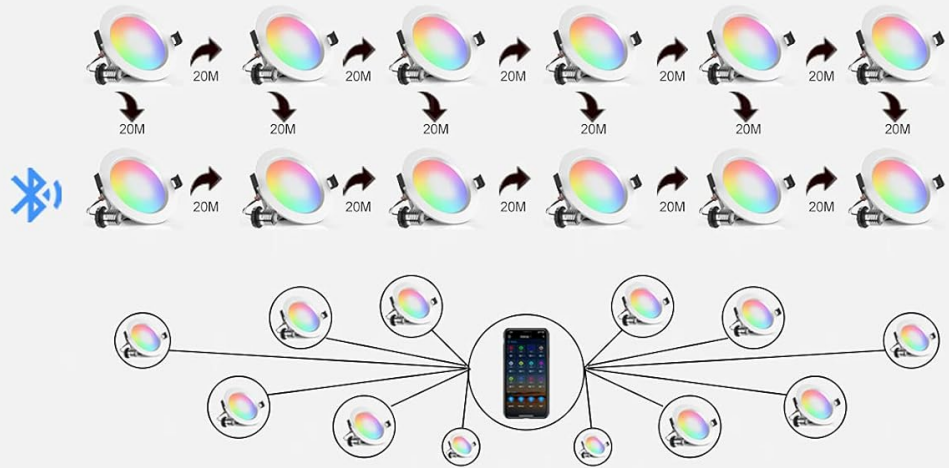


Connect via bluetooth

3



Control your bulb wirelessly



16 Millions
Colors



Share
Access



Easy
Dimming



Timer



BT Mesh



Built-in
mode



Cool & Warm



Music
Sync



Group
control

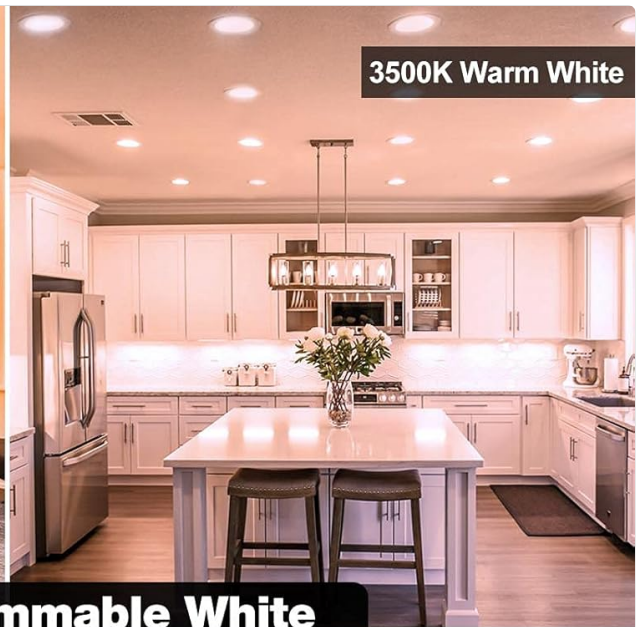
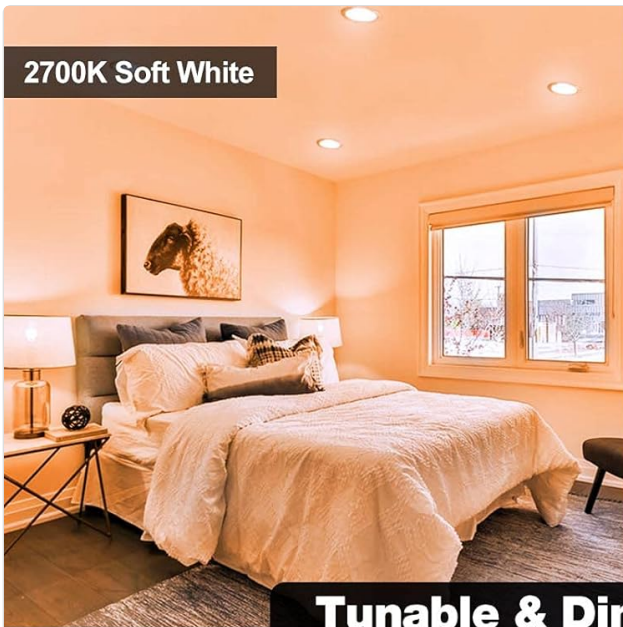


App Control

Image: A visual representation of the HaoDeng app interface, showing steps to open the app, connect via Bluetooth, and control the light wirelessly, along with icons for various features like 16 million colors, sharing, dimming, timers, and group control.

6.2. Key App Features

- **Color Changing:** Access over 16 million colors (RGB) to set the perfect ambiance.
- **Tunable White Kelvin:** Adjust white light from 2700K (warm white) to 6500K (cool white/daylight) to suit different activities or times of day.
- **Brightness Adjustable:** Stepless dimming allows you to set the light intensity from 1% to 100%.
- **Group Control:** Create groups of lights to control multiple fixtures simultaneously. You can control up to 64 lights as a single group.
- **Scene Mode:** Set up and save custom lighting scenes for various occasions (e.g., "Movie Night," "Reading," "Party").
- **Mic Mode & Music Sync:** The lights can change color and brightness in sync with music played through your phone's microphone or directly from the app.
- **Timer Schedules:** Program lights to turn on/off at specific times, including sunrise and sunset functions.
- **Dynamic Patterns:** Utilize pre-set dynamic modes such as strobe, fade, and gradual change for special effects.
- **Share Access:** Authorize other users to control your lights.



Tunable & Dimmable White
Meet the needs of various scenarios

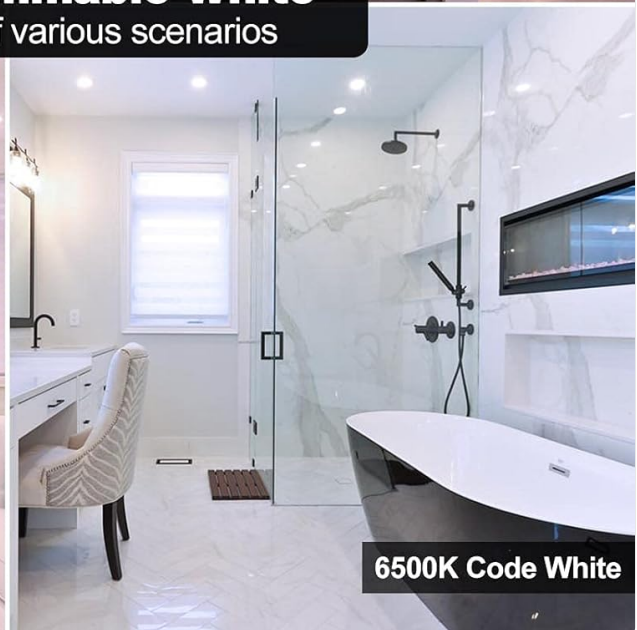
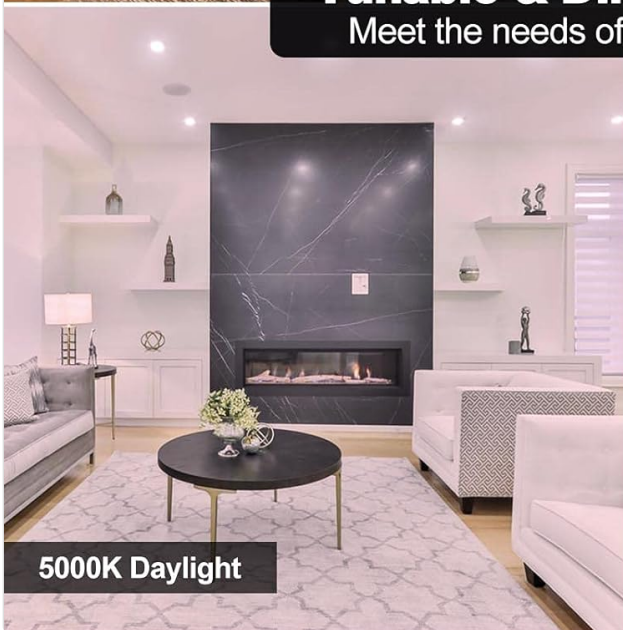
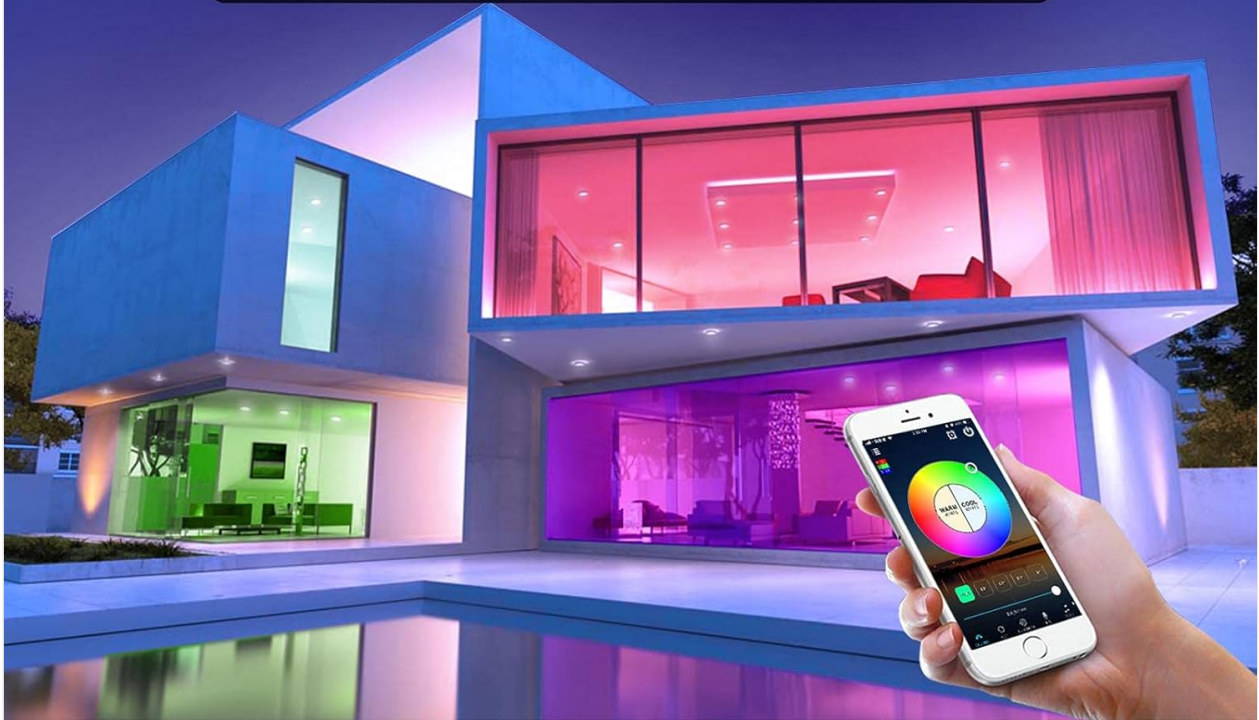


Image: Four room settings demonstrating the tunable white feature, showing 2700K Soft White in a bedroom, 3500K Warm White in a kitchen, 5000K Daylight in a living room, and 6500K Cool White in a bathroom.

Multicolor Scene & Group Control

Up to 64 lights can be controlled simultaneously



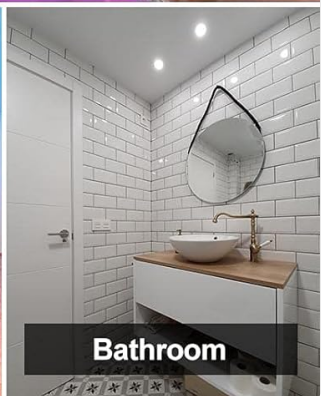
Kitchen



Bedroom



Living Room



Bathroom

Image: An exterior view of a modern house with various rooms illuminated in different colors, demonstrating multicolor scene and group control capabilities via a smartphone app. Insets show different rooms with varied lighting.

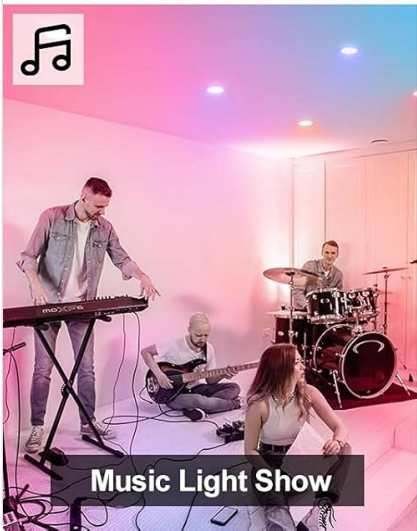
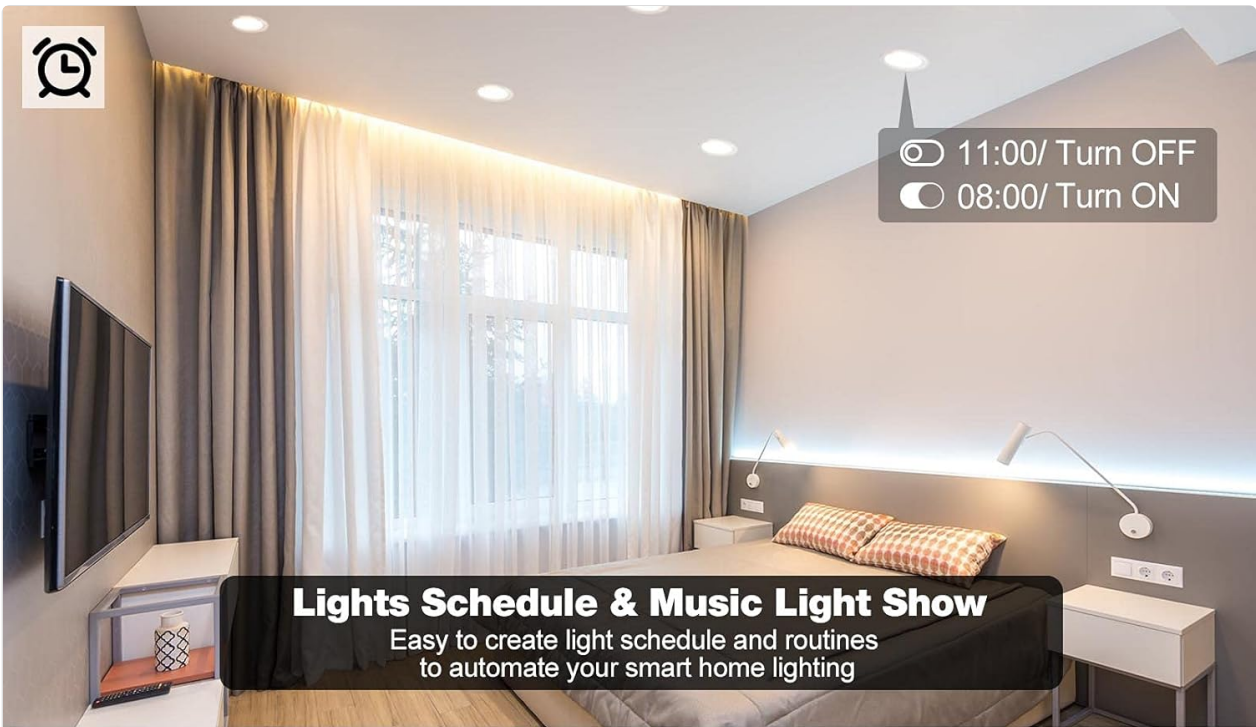


Image: A collage showing the light scheduling feature (turn on/off at set times) and various music sync modes, including a general music light show, dynamic light show, and mic light show, illustrating how lights react to sound.

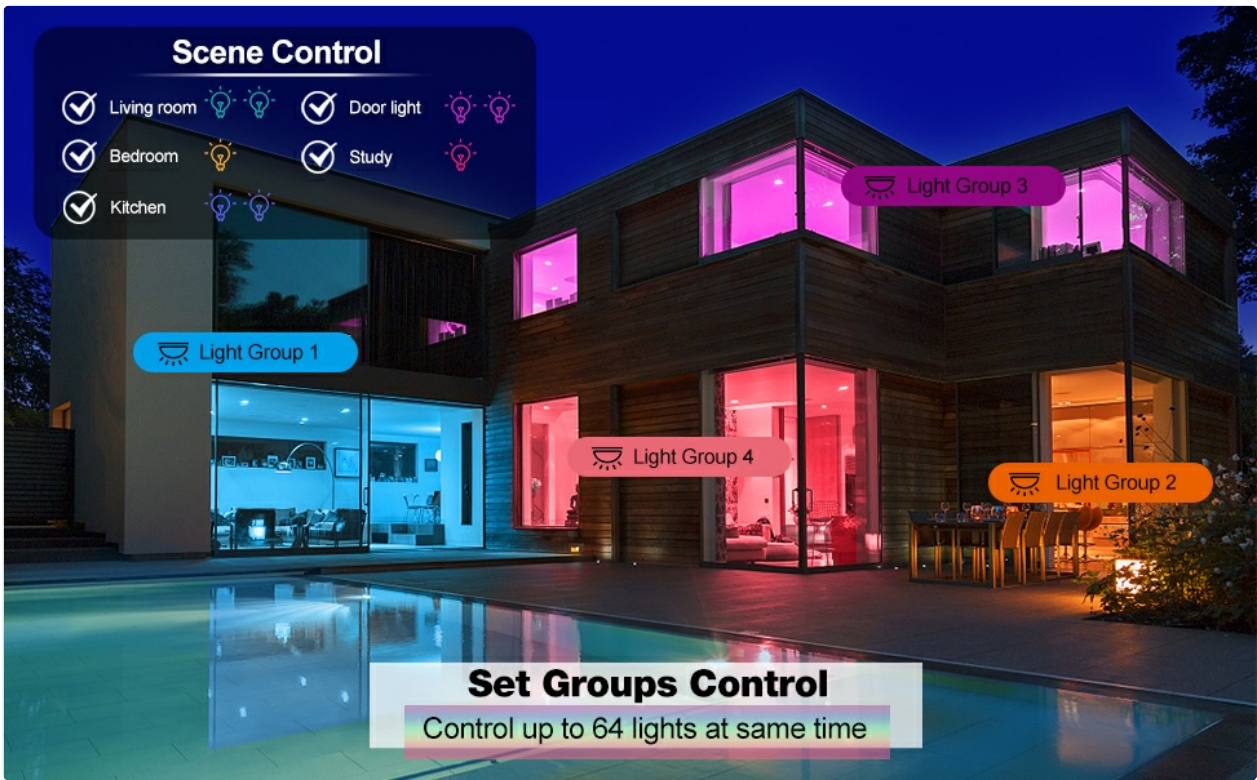
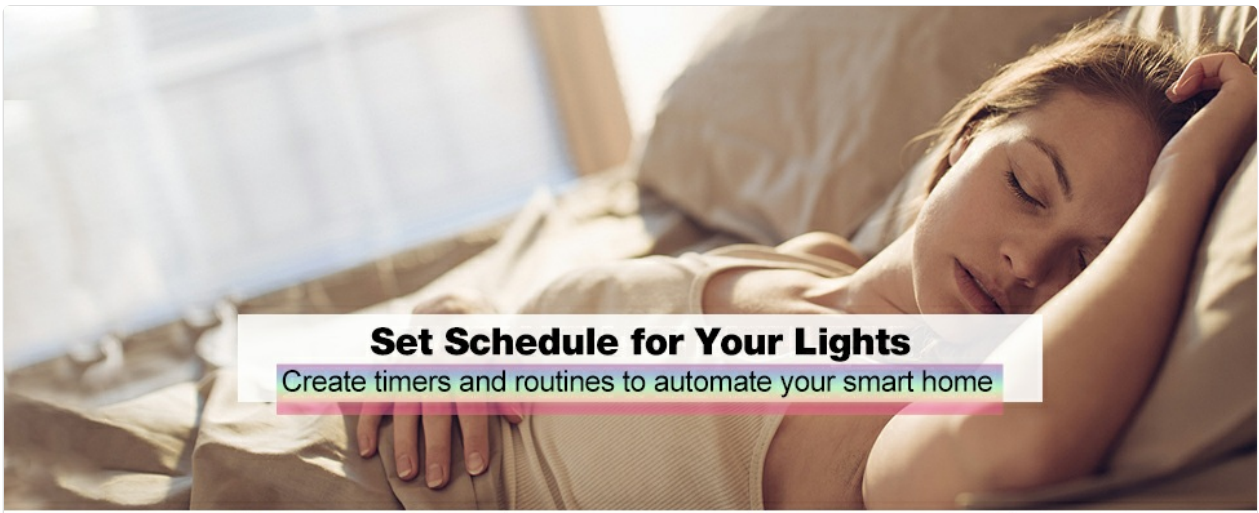


Image: An illustration of a house with different light groups (Living room, Bedroom, Study, Kitchen) being controlled from a central app interface, demonstrating the ability to set groups and scenes for up to 64 lights simultaneously.



Image: A visual display of various white light color temperatures (2700K Soft White, 3000K Warm White, 3500K Warm White, 4000K Cool White, 5000K Daylight) and rooms illuminated with RGB changing colors, highlighting the versatility of the lights.



Set Schedule for Your Lights

Create timers and routines to automate your smart home

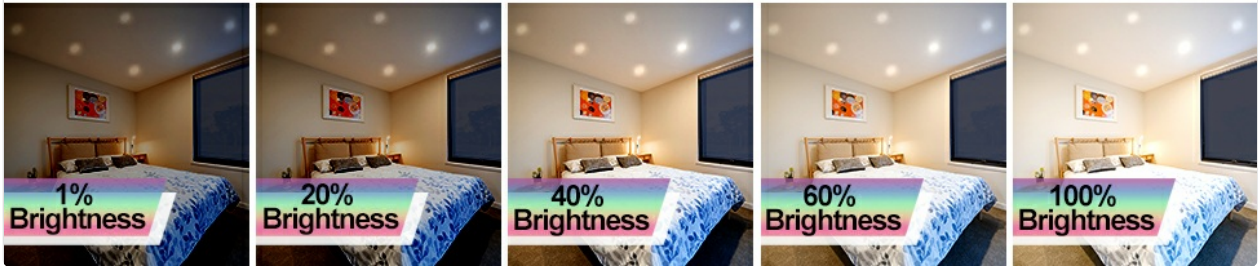


Image: A person sleeping in a bedroom, illustrating the "Set Schedule for Your Lights" feature. Below, five images show the same bedroom with brightness levels adjusted from 1% to 100%, demonstrating the dimmable functionality.



Image: A collage highlighting four key features: music sync for party lighting, dynamic color changing with gradient and flash modes, secure control of lights requiring authorization, and efficient energy saving benefits.

7. MAINTENANCE

- **Cleaning:** Ensure the power is off before cleaning. Wipe the light fixture with a soft, dry cloth. Do not use abrasive cleaners or solvents, as they may damage the finish or electrical components.

- **Inspection:** Periodically inspect the lights for any signs of damage or loose connections. If any issues are found, turn off power and consult a qualified electrician.
- **No User-Serviceable Parts:** The LED components are integrated and not replaceable by the user. Do not attempt to open the fixture.

8. TROUBLESHOOTING

Common Issues and Solutions

Problem	Possible Cause	Solution
Light does not turn on.	No power, loose connection, faulty light.	Check circuit breaker. Ensure all connections are secure. Test with a known working light if possible.
Cannot connect to the HaoDeng app.	Bluetooth off, app not updated, light out of range, interference.	Ensure Bluetooth is enabled on your device. Update the HaoDeng app to the latest version. Move closer to the light. Restart your phone and the light (by cycling power).
Lights are flashing uncontrollably.	Connection issue, incorrect setting, power fluctuation.	Cycle power to the light (turn off for 10 seconds, then on). Check app settings for any dynamic modes enabled. Ensure stable power supply.
Lights do not respond to app commands.	Bluetooth connection lost, app glitch, light unresponsive.	Verify Bluetooth connection. Close and reopen the app. Cycle power to the light. Re-pair the light with the app if necessary.
Cannot control lights with Alexa/Google Assistant.	Incorrect integration setup, missing hub (if required for voice assistant).	Ensure the HaoDeng app is correctly linked to your smart home platform (Alexa/Google Home). Some voice assistant integrations may require a compatible hub (not included with this 10-pack). Refer to the HaoDeng app's integration guide.

9. WARRANTY AND SUPPORT

This Vanance product comes with an 18-month manufacturer warranty. The warranty covers defects in materials and workmanship under normal use. Please retain your proof of purchase for warranty claims. For technical support, warranty claims, or further assistance, please contact Vanance customer service through the retailer's platform or visit the official Vanance website (if available).

Warranty Type: Manufacturer and Seller Combination

Special Feature: 18 months Long Warranty

