

Ibergrif M41001

Ibergrif M41001 D-shape Toilet Seat Instruction Manual

Model: M41001

1. PRODUCT OVERVIEW AND FEATURES

The Ibergrif M41001 D-shape toilet seat is designed for comfort, durability, and ease of maintenance. It features a soft-close mechanism to prevent slamming and a quick-release design for simple cleaning.

- **Durable Material:** Constructed from high-quality PP (Polypropylene) plastic, resistant to stains, fading, and scratches, ensuring a long lifespan.
- **Soft-Close and Quiet:** The slow-descent and soft-close function eliminates loud noises when closing the toilet seat, providing a quiet experience.
- **Quick Release Design:** The toilet lid can be easily removed with a quick-release mechanism, simplifying daily cleaning.
- **Easy Installation:** All necessary installation materials and instructions are included, allowing for quick setup.
- **Universal Fit with Adjustable Hinges:** The hinge distance is adjustable (70-170mm), making the toilet seat compatible with most standard U- or D-shaped toilet bowls. Please verify your toilet bowl shape and measure dimensions before ordering.

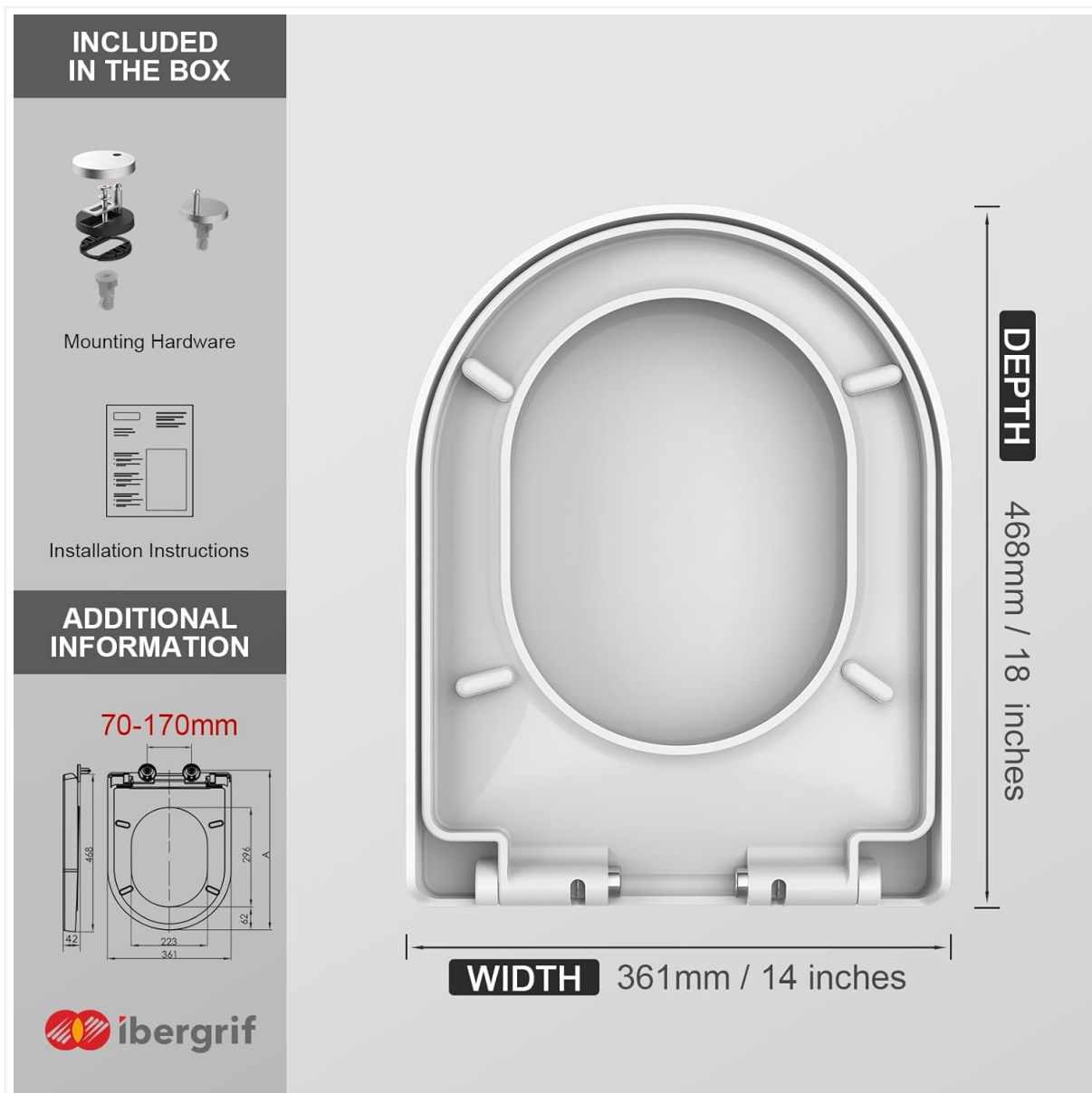


Image 1.1: Overview of the Ibergrif M41001 D-shape toilet seat highlighting its key features.

Video 1.1: A short preview demonstrating the soft-close and quick-release features of the Ibergrif M41001 toilet seat.

2. SAFETY INFORMATION

Please read and understand all instructions before installation and use. Keep this manual for future reference.

- Do not stand on the toilet seat or lid.
- Avoid using abrasive cleaners or harsh chemicals, as these can damage the surface finish.
- Ensure all mounting hardware is securely tightened to prevent movement and potential injury.
- Keep small parts out of reach of children during installation.

3. PACKAGE CONTENTS

Verify that all components are present before beginning installation.

- 1 x Ibergrif M41001 D-shape Toilet Seat
- Mounting Hardware (screws, washers, nuts, covers)
- Installation Instructions (this manual)



Image 3.1: Visual representation of items included in the box, such as the toilet seat, mounting hardware, and instructions.

4. PRODUCT DIMENSIONS AND COMPATIBILITY

To ensure proper fit, measure your toilet bowl accurately before installation.

- **Shape:** D-shape
- **Overall Product Dimensions:** 46.8 cm (Depth) x 36.1 cm (Width) x 4.2 cm (Height)
- **Hinge Adjustment Range:** 70mm - 170mm



Image 4.1: Detailed dimensions of the Ibergrif M41001 toilet seat, including depth, width, and hinge adjustment range.

HOW TO PROPERLY CHOOSE YOUR TOILET SEAT

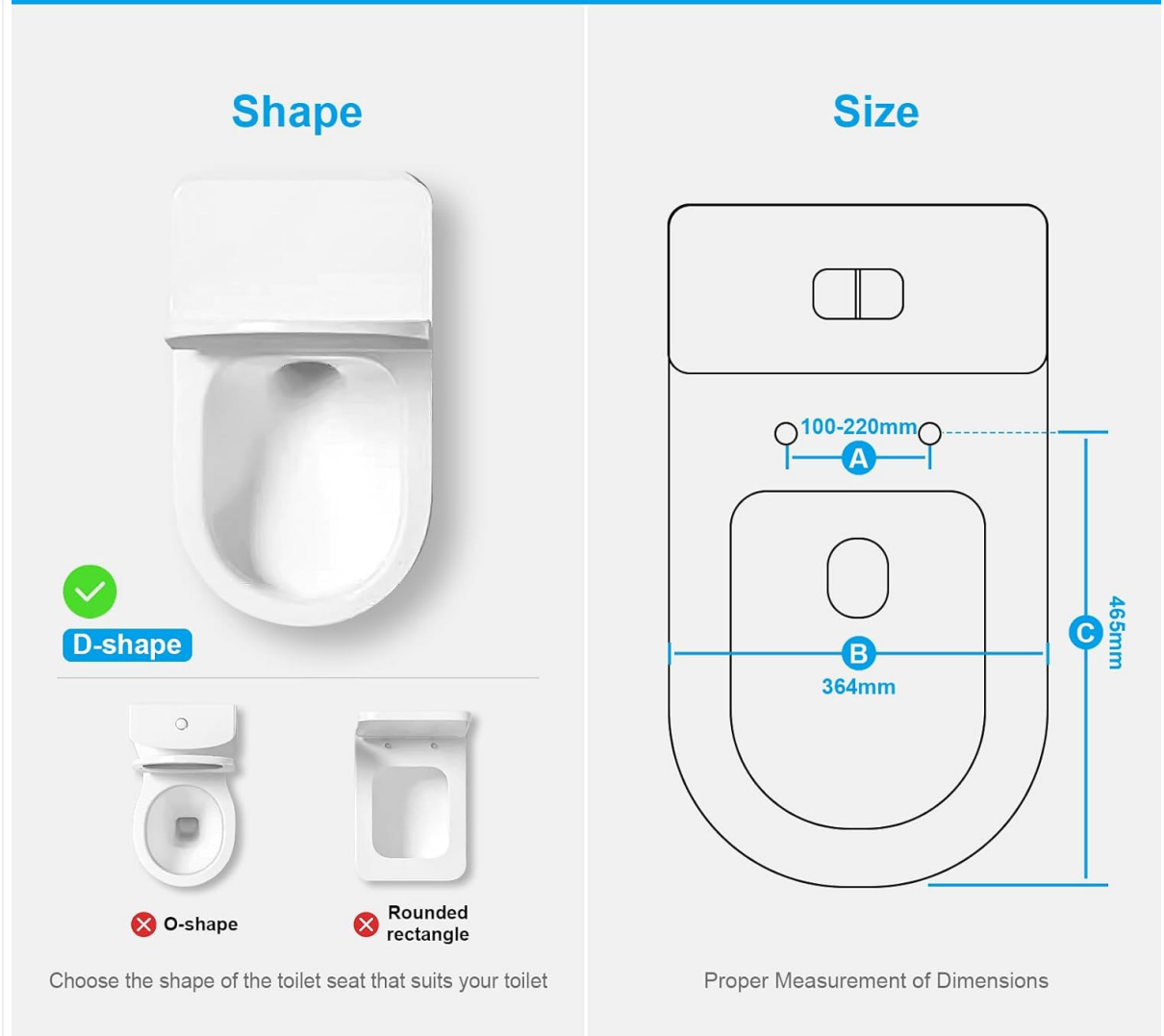


Image 4.2: Guide on how to properly measure your toilet for compatibility, emphasizing D-shape and specific measurement points.

5. INSTALLATION GUIDE

Follow these steps for a secure and proper installation of your Ibergreif M41001 toilet seat.

1. **Prepare the Toilet Bowl:** Ensure the toilet bowl surface around the mounting holes is clean and dry.
2. **Insert Mounting Hardware:** Place the rubber expansion bolts into the toilet bowl holes.
3. **Assemble Hinges:** Attach the metal bases and screws to the expansion bolts. Do not fully tighten yet.
4. **Adjust Hinge Distance:** Position the metal bases to match the hinge spacing on the toilet seat (adjustable from 70mm to 170mm).
5. **Attach Toilet Seat:** Align the toilet seat hinges with the metal bases and press down until they click into place.
6. **Secure the Seat:** Once the seat is attached and properly aligned, tighten the screws on the metal bases to secure the seat firmly. Ensure the seat bumpers are in contact with the toilet bowl to prevent shifting.



Image 5.1: Detail of the quick-release mechanism and mounting posts, illustrating how the seat attaches and detaches.

KEEPS THE SEAT FROM SHIFTING

Use the 4 bumpers increase friction to prevent slippage.



Image 5.2: Illustration of the four bumpers on the underside of the seat, which increase friction and prevent slippage.

6. OPERATION

The Ibergrif M41001 toilet seat is designed for user convenience.

- **Soft-Close Function:** Gently push the seat or lid downwards. The soft-close mechanism will engage, allowing it to close slowly and silently without manual assistance.
- **Quick-Release for Cleaning:** To remove the seat for cleaning, locate the quick-release buttons on the hinges (as shown in Image 5.1). Press these buttons and lift the seat straight up.



Image 6.1: Demonstration of the slow-close feature, where the toilet seat closes gently and quietly.

7. MAINTENANCE AND CLEANING

Regular cleaning will maintain the appearance and hygiene of your toilet seat.

- **Daily Cleaning:** Use a soft cloth with mild soap and water to wipe down the seat and lid.
- **Deep Cleaning:** Utilize the quick-release function to easily remove the seat. This allows for thorough cleaning of both the seat and the hard-to-reach areas of the toilet bowl.
- **Avoid Harsh Chemicals:** Do not use abrasive cleaners, strong acids, or alkaline detergents, as these can damage the PP material and finish.
- **Drying:** Always dry the seat and hinges thoroughly after cleaning to prevent water spots and maintain hygiene.

8. TROUBLESHOOTING

If you encounter any issues, refer to the following common solutions.

- **Seat is loose or shifts:**
 - Ensure the mounting hardware is securely tightened.

- Check that the four bumpers on the underside of the seat are intact and making proper contact with the toilet bowl.
- **Soft-close function is not working properly:**
 - Verify that the seat is correctly installed and aligned on the hinges.
 - Ensure no obstructions are preventing the smooth closing of the seat or lid.
- **Seat does not fit my toilet:**
 - Confirm that your toilet bowl is D-shaped. This seat is not suitable for round or O-shaped toilets.
 - Re-measure your toilet bowl's dimensions (depth, width, and hinge spacing) and compare them with the product specifications (Section 4). The hinge distance is adjustable from 70mm to 170mm.

9. SPECIFICATIONS

Brand	Ibergrif
Model Number	M41001
Material	Polypropylene (PP)
Color	White
Shape	D-shape
Product Dimensions (L x W x H)	46.8L x 36.1W x 4.2H cm
Hinge Adjustment Range	70mm - 170mm
Operating Mode	Automatic (Soft-close)
Manufacturer	Ibergrif Griferias S.L

10. WARRANTY AND SUPPORT

For warranty information or technical support, please refer to the retailer where the product was purchased or visit the official Ibergrif website. Keep your proof of purchase for any warranty claims.