



Manuals.plus /

› REPORSHOP /

› REPORSHOP Electronic Control Board Instruction Manual for Ferroli Domiproject F24 Boiler (Model RE288920002)

REPORSHOP RE288920002

REPORSHOP Electronic Control Board Instruction Manual

Model: RE288920002 for Ferroli Domiproject F24 Boilers

INTRODUCTION

This instruction manual provides essential information for the safe and correct installation, operation, and maintenance of the REPORSHOP Electronic Control Board, model RE288920002. This board is designed as a replacement component for Ferroli Domiproject F24 boiler systems. Please read this manual thoroughly before proceeding with any installation or service to ensure proper function and safety.

SAFETY INFORMATION

WARNING: Installation and service must be performed by a qualified and authorized technician. Failure to follow these instructions could result in electric shock, fire, property damage, or personal injury.

- Always disconnect power to the boiler system before beginning any installation, maintenance, or repair work.
- Verify that the replacement board matches the original board's specifications and model number.
- Handle the electronic board with care to avoid damage from electrostatic discharge (ESD). Use appropriate ESD precautions.
- Ensure all connections are secure and correctly wired according to the boiler's wiring diagram.
- Do not attempt to modify the electronic board.

SETUP AND INSTALLATION

Pre-Installation Checks

1. Confirm the boiler model is Ferroli Domiproject F24.
2. Ensure the replacement board, model RE288920002, is identical to the board being replaced.
3. Gather necessary tools: screwdrivers, multimeter, ESD wrist strap.

Installation Steps

1. **Disconnect Power:** Turn off the main power supply to the boiler at the circuit breaker. Verify with a

multimeter that no power is present.

2. **Access the Control Board:** Open the boiler casing to access the existing electronic control board. Refer to your specific boiler's service manual for exact access procedures.
3. **Document Connections:** Before disconnecting any wires, take clear photographs or make detailed diagrams of all wire connections to the old board. This is crucial for correct reassembly.
4. **Disconnect Wires:** Carefully disconnect all wiring harnesses and connectors from the old board. Note any specific locking mechanisms.
5. **Remove Old Board:** Unscrew or unclip the old electronic board from its mounting points.
6. **Install New Board:** Position the new REPORSHOP Electronic Control Board (RE288920002) in the same location and secure it using the original screws or clips.
7. **Reconnect Wires:** Using your photographs or diagrams, carefully reconnect all wiring harnesses and connectors to the new board. Ensure each connection is firm and correctly seated.
8. **Visual Inspection:** Double-check all connections for correctness and security. Ensure no wires are pinched or loose.
9. **Close Casing:** Securely close the boiler casing.
10. **Restore Power:** Turn on the main power supply to the boiler.
11. **Test Operation:** Initiate the boiler's normal operation sequence and observe for proper function, error codes, or unusual behavior.

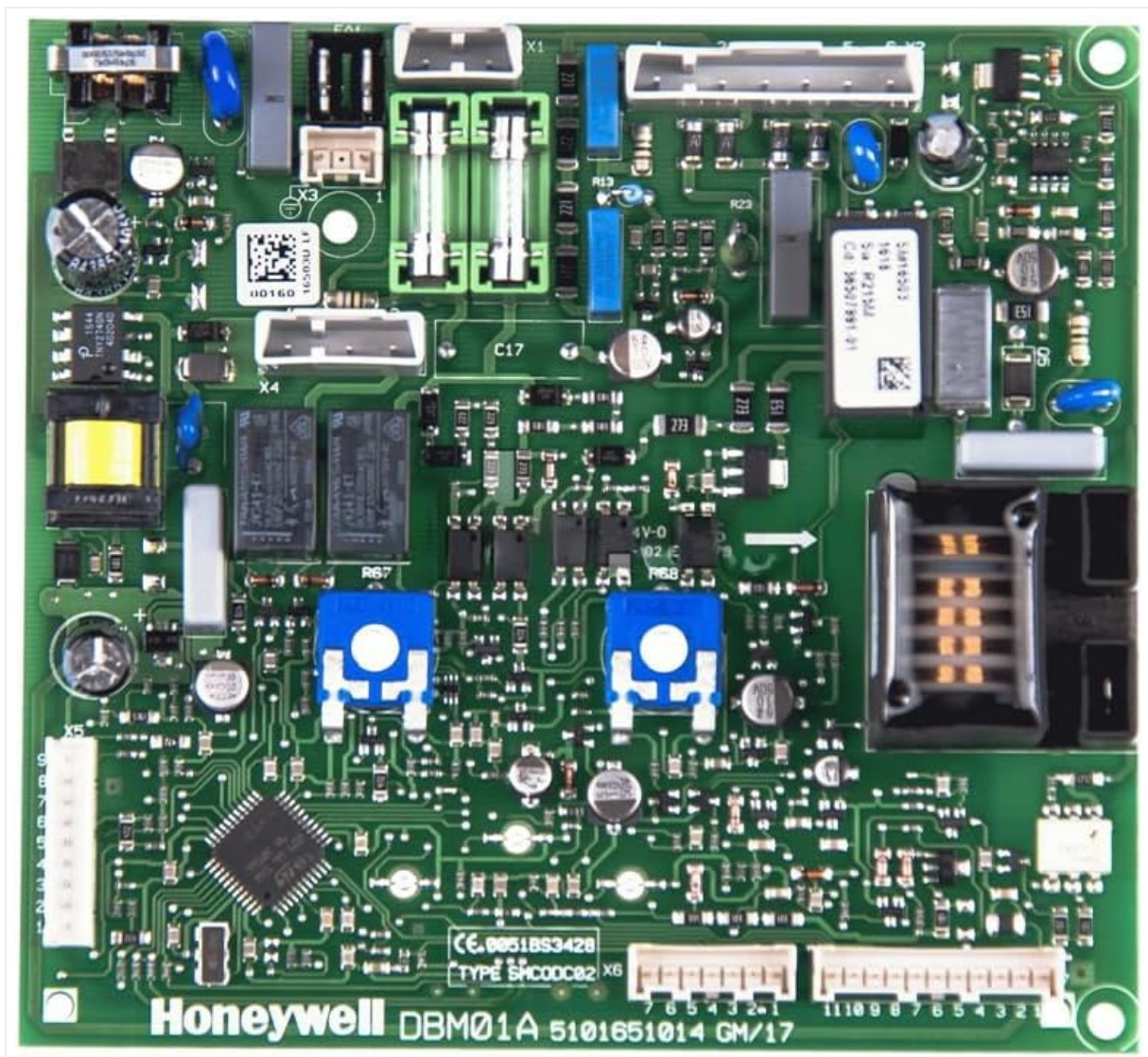


Image 1: Front view of the REPORSHOP Electronic Control Board (RE288920002). This image displays the primary components, including relays, capacitors, resistors, and various connection points, crucial for controlling the boiler's functions. Note the Honeywell DBM01A marking at the bottom.

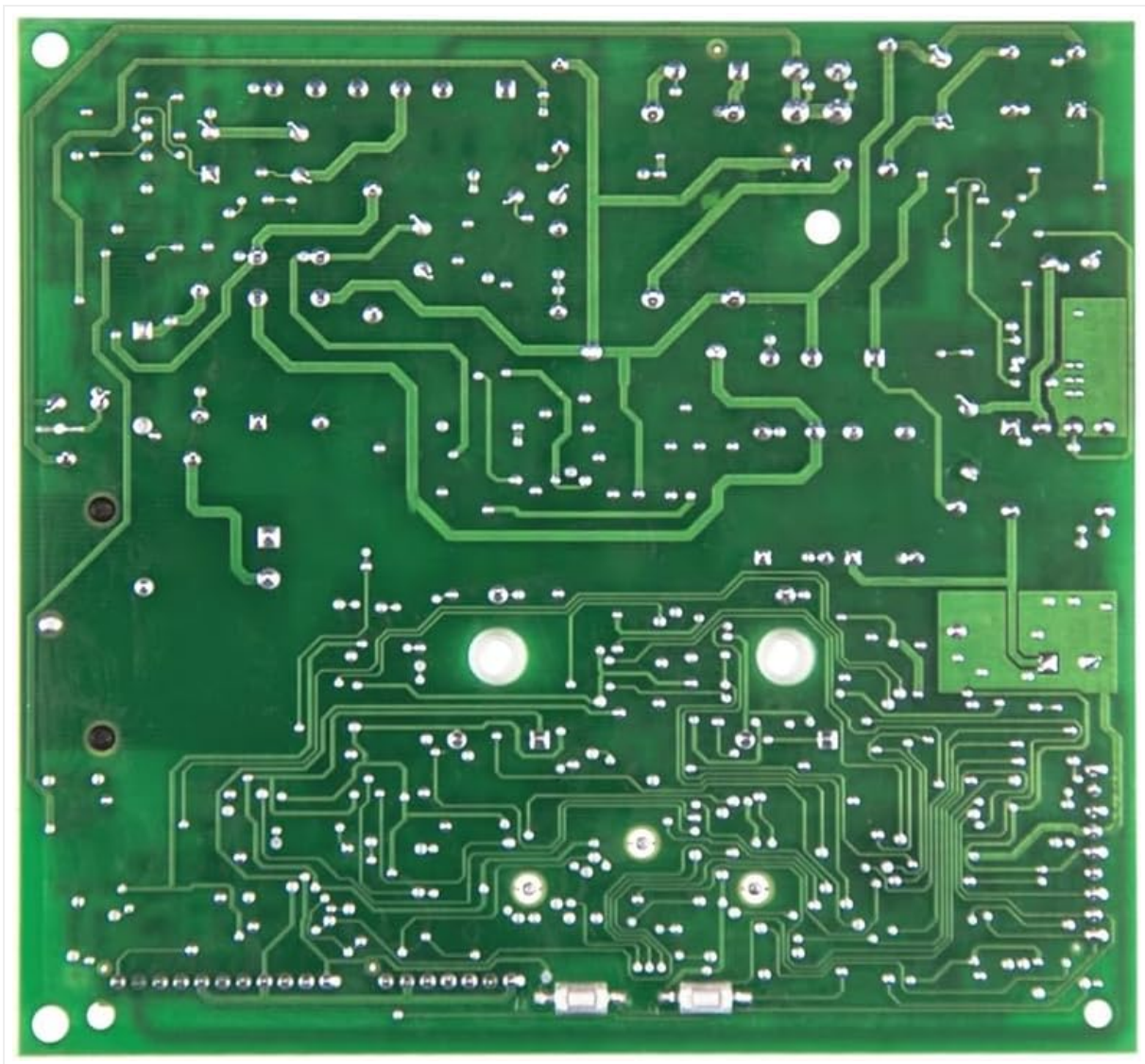


Image 2: Rear view of the REPORSHOP Electronic Control Board (RE288920002). This image illustrates the intricate circuit traces and solder points on the reverse side of the printed circuit board, demonstrating the internal wiring and connections.

OPERATING PRINCIPLES (POST-INSTALLATION)

Once installed, the electronic control board operates automatically, managing the various functions of the Ferrol Domiproject F24 boiler. It processes signals from sensors, controls ignition, modulates flame, and manages water circulation based on user settings and system demands.

- Ensure the boiler's user interface (thermostat, control panel) is functioning correctly.
- Monitor the boiler for any unusual noises, smells, or error codes displayed on the boiler's panel.
- Refer to your Ferrol Domiproject F24 boiler's user manual for specific operational instructions and error code interpretations.

MAINTENANCE

The electronic control board itself requires minimal direct maintenance. However, ensuring the overall cleanliness and proper functioning of the boiler system is crucial for its longevity.

- **Annual Boiler Service:** Have your boiler system professionally serviced annually by a qualified technician. This includes checking electrical connections, cleaning components, and verifying system parameters.
- **Environmental Conditions:** Ensure the boiler environment is free from excessive dust, moisture,

and extreme temperatures, which can negatively impact electronic components.

- **Visual Inspection:** During boiler service, the technician should visually inspect the control board for any signs of overheating, corrosion, or physical damage.

TROUBLESHOOTING

If the boiler exhibits malfunctions after the control board replacement, consider the following general troubleshooting steps. Always consult a qualified technician for diagnosis and repair.

- **No Power:** Check the main power supply to the boiler and the circuit breaker. Ensure all connections to the board are secure.
- **Error Codes:** Refer to the Ferroli Domiproject F24 boiler's service manual for specific error code interpretations. An error code might indicate an issue with a sensor, pump, or other component, not necessarily the control board itself.
- **Intermittent Operation:** Verify all wiring connections are tight and free from corrosion. Check for stable voltage supply.
- **Incorrect Function:** Ensure the correct board model was installed and that all settings (if any are adjustable on the board) are configured properly according to the boiler's specifications.

SPECIFICATIONS

Product Type: Electronic Control Board

Brand: REPORSHOP

Model Number: RE288920002

Compatibility: Ferroli Domiproject F24 Boiler

Part Number (Internal): I39819530 (as per product listing)

WARRANTY INFORMATION

REPORSHOP products are typically covered by a manufacturer's warranty against defects in materials and workmanship. The specific terms and duration of the warranty may vary. Please retain your proof of purchase. For detailed warranty information, refer to the documentation provided with your purchase or contact REPORSHOP customer service directly.

Note: Improper installation, unauthorized modifications, or use of the product outside its specified operating conditions will void the warranty.

SUPPORT AND CONTACT

For technical assistance, troubleshooting beyond this manual, or warranty claims, please contact REPORSHOP customer support. When contacting support, please have your product model number (RE288920002) and proof of purchase readily available.

REPORSHOP Customer Service:

Website: www.reporshop.com (Example link, actual link may vary)

Email: support@reporshop.com (Example email, actual email may vary)