

Manuals+

[Q & A](#) | [Deep Search](#) | [Upload](#)

manuals.plus /

› [junlit](#) /

› [JUNLIT 15A Outdoor Smart Plug User Manual](#)

junlit JL-OSP1-1pc

JUNLIT 15A Outdoor Smart Plug User Manual

Model: JL-OSP1-1pc

1. PRODUCT OVERVIEW

The JUNLIT 15A Outdoor Smart Plug is a versatile Wi-Fi enabled outlet designed for both outdoor and indoor use. It features two independently controllable AC sockets, allowing for remote management of various electrical appliances. Compatible with Amazon Alexa and Google Assistant, this smart plug offers convenient voice control and scheduling capabilities to enhance energy efficiency and simplify your daily routines.



The JUNLIT Outdoor Smart Plug, designed for durability and smart control, shown with its two independent outlets and a mobile app interface.

Key Features:

- **2-in-1 Independent Control:** Two AC sockets, each controllable independently via the Smartlife App.
- **Remote & Voice Control:** Compatible with Amazon Alexa and Google Assistant for hands-free operation.
- **Timer & Schedule Functions:** Set custom schedules for devices to turn on/off, promoting energy saving.
- **Outdoor Use:** IP55 water-resistant design, suitable for gardens, patios, and other outdoor electrical appliances (not recommended for heavy rain/snow or pumps).
- **Safety Guaranteed:** FCC/ETL listed with flame retardant case and overload protection.



The smart plug seamlessly integrates into outdoor environments, powering various lighting and appliances.

2. WHAT'S IN THE BOX

Upon opening your JUNLIT 15A Outdoor Smart Plug package, you should find the following items:

- 1 x Smart Outdoor Plug
- 1 x User Manual

3. SPECIFICATIONS

Attribute	Value
Product Dimensions	6.3 x 4.3 x 2.3 inches
Item Weight	8.15 ounces
Model Number	JL-OSP1-1pc
Current Rating	15 Amps
Operating Voltage	120 Volts
Connector Type	Plug In
Operation Mode	Automatic, Automatically
Water Resistance	IP55
Wi-Fi Compatibility	2.4 GHz Wi-Fi Only



Detailed dimensions of the smart plug for installation planning.

4. SAFETY INFORMATION

Please read and follow all safety instructions carefully to prevent injury or damage.

- Ensure the smart plug is properly installed and connected to a grounded outlet.
- Do not immerse the device in water. While it is IP55 water-resistant, it is not fully waterproof.
- Avoid using the smart plug in areas with heavy rain or snow to prevent potential damage.
- Do not exceed the maximum current rating of 15 Amps. Overloading can cause overheating and fire hazards.
- Keep out of reach of children.
- Disconnect power before cleaning or performing any maintenance.
- Do not disassemble or modify the smart plug.



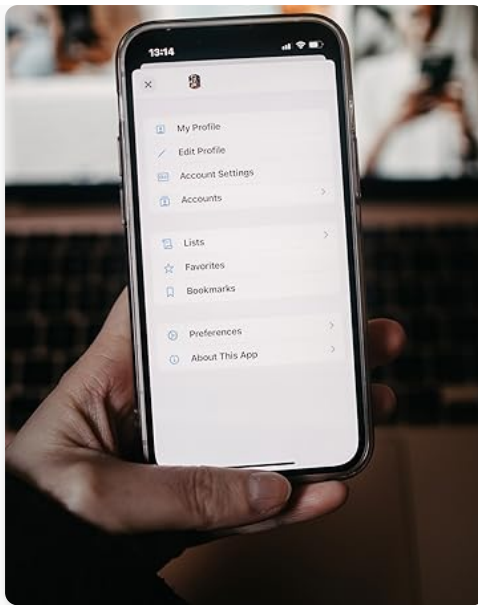
The IP55 water-resistant design provides protection against splashes and light rain.

5. SETUP GUIDE

Follow these steps to set up your JUNLIT Outdoor Smart Plug and connect it to your Wi-Fi network and smart home system.

Step 1: Download the Smartlife App

Search for "Smartlife" in your mobile device's app store (App Store for iOS or Google Play Store for Android) and download the application.



The Smartlife app is essential for controlling your smart plug.

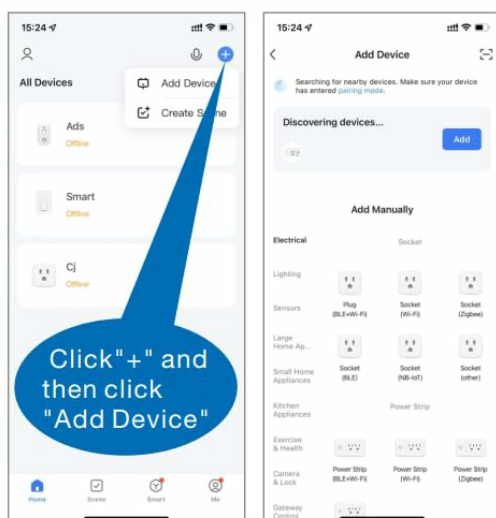
Step 2: Plug In the Smart Plug

Plug the JUNLIT Outdoor Smart Plug into a standard 120V AC outlet. Ensure it is within range of your 2.4 GHz Wi-Fi network. The indicator light on the plug will begin to blink, indicating it is in pairing mode.

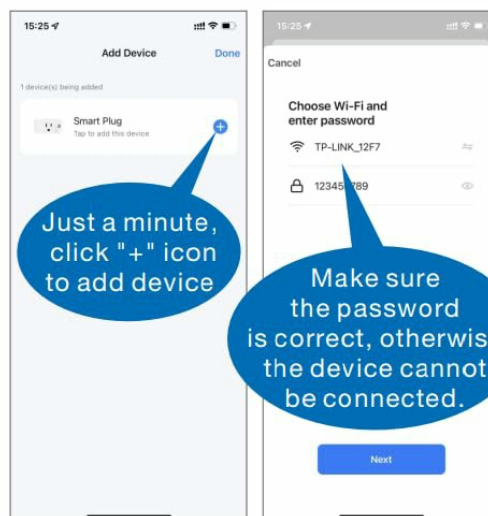
Step 3: Add Device in Smartlife App

1. Open the Smartlife App.
2. Tap the "+" icon (usually in the upper right corner) to add a new device.
3. Select "Electrical" then "Outlet (Wi-Fi)" or similar category.
4. Confirm that the indicator light on the smart plug is blinking rapidly. If not, press and hold the power button on the plug for 5 seconds until it blinks rapidly.
5. Enter your 2.4 GHz Wi-Fi network password. (Note: The smart plug only supports 2.4 GHz Wi-Fi networks. 5 GHz networks are not supported.)
6. Follow the on-screen instructions to complete the pairing process. The app will discover and connect to your smart plug.
7. Once connected, you can rename the smart plug and its individual outlets for easier identification.

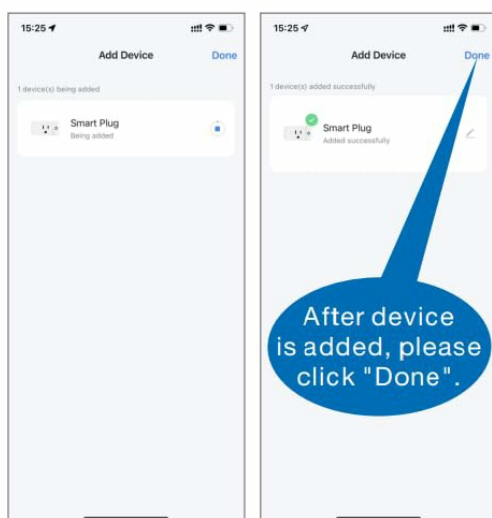
(1) Open the app "Smart Life"; Click "+" on the upper-right.



(2) Just a minute, click "+" icon to add device.
(3) Select the Wi-Fi which the mobile phone is connected, enter the Wi-Fi password, and click "Next".



(4) After device is added, please click "Done".



Visual guide for connecting the smart plug via the Smartlife app.

6. OPERATING INSTRUCTIONS

Once your JUNLIT Outdoor Smart Plug is set up, you can control it using various methods.

6.1. Remote Control via Smartlife App

Open the Smartlife App on your smartphone or tablet. You will see your added smart plug. Tap on the device to access its control interface. From here, you can:

- Turn each of the two outlets ON or OFF independently.
- Monitor the status of each outlet.

- Access scheduling and timer functions.



Control your outdoor lighting and appliances from anywhere using the Smartlife app.

6.2. Voice Control (Alexa & Google Assistant)

To enable voice control, link your Smartlife account to your Amazon Alexa or Google Home app. Once linked, you can use voice commands to control your smart plug.

- **For Amazon Alexa:** Say, "Alexa, turn on [Device Name]" or "Alexa, turn off [Device Name]".
- **For Google Assistant:** Say, "Hey Google, turn on [Device Name]" or "Hey Google, turn off [Device Name]".

Replace "[Device Name]" with the name you assigned to your smart plug or its individual outlets in the Smartlife App (e.g., "Christmas Lights", "Patio Fan").



“Alexa, turn on the string light.”

Voice Control

Voice commands from Google Assistant and Alexa to control the device to free up your hands.



“Okay.”

works with alexa

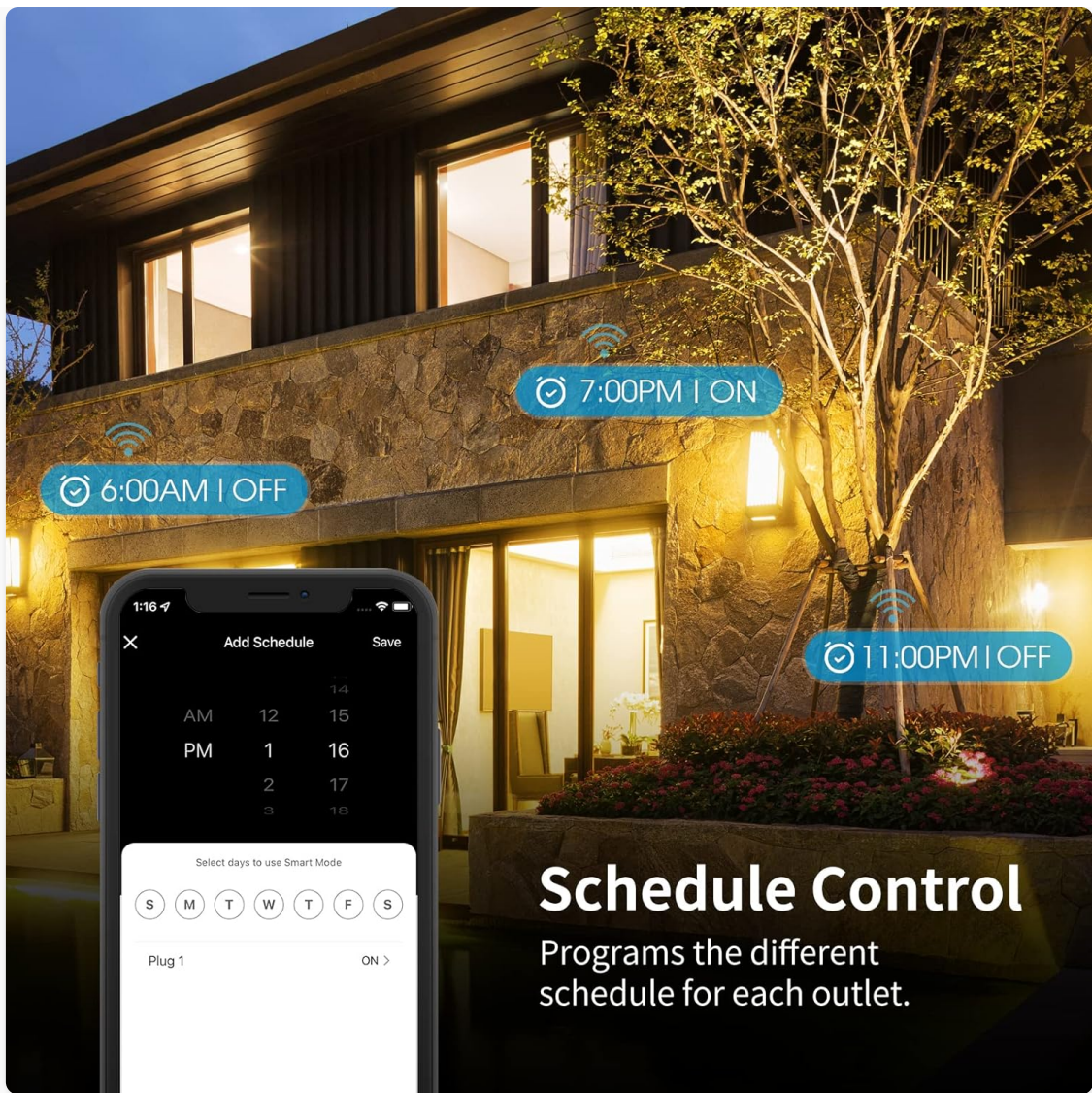
works with Hey Google

Enjoy hands-free control of your smart plug using Amazon Alexa or Google Assistant.

6.3. Timer and Schedule Functions

The Smartlife App allows you to create custom schedules and timers for your smart plug, automating your devices and saving energy.

- **Scheduling:** Set specific times for the outlets to turn ON or OFF on chosen days of the week. For example, turn on patio lights at sunset and turn them off at 11:00 PM.
- **Timer:** Set a countdown timer for an outlet to turn ON or OFF after a specified duration.



Program custom schedules for each outlet to automate your devices.

7. MAINTENANCE

Proper maintenance ensures the longevity and optimal performance of your smart plug.

- **Cleaning:** Disconnect the smart plug from power before cleaning. Use a soft, dry cloth to wipe the surface. Do not use harsh chemicals or abrasive cleaners.
- **Storage:** If not in use for an extended period, store the smart plug in a cool, dry place away from direct sunlight and extreme temperatures.
- **Inspection:** Periodically inspect the plug and cable for any signs of damage, such as frayed wires or cracks. Do not use if damaged.

8. TROUBLESHOOTING

If you encounter issues with your JUNLIT Outdoor Smart Plug, refer to the following common problems and solutions:

Problem	Possible Cause	Solution
---------	----------------	----------

Problem	Possible Cause	Solution
Device cannot connect to Wi-Fi	Incorrect Wi-Fi password; Not 2.4 GHz Wi-Fi; Out of Wi-Fi range; Router issues.	Ensure correct 2.4 GHz Wi-Fi password. Move plug closer to router. Restart router. Ensure plug is in pairing mode (blinking rapidly).
Device offline in app	Wi-Fi disconnected; Power outage; Device malfunction.	Check Wi-Fi connection. Verify power to the plug. Unplug and replug the smart plug. If issue persists, try re-pairing.
Voice control not working	Smartlife account not linked; Incorrect device name; Voice assistant issues.	Ensure Smartlife skill/service is enabled and linked in Alexa/Google Home app. Use the exact device name. Check voice assistant settings.
Outlets not responding	Overload; Device malfunction.	Check if the connected appliance exceeds 15A. Reduce load. Try resetting the smart plug.

9. WARRANTY AND SUPPORT

Specific warranty details for the JUNLIT 15A Outdoor Smart Plug are not provided in this manual. For warranty information, technical support, or any inquiries regarding your product, please contact JUNLIT customer service directly. You can typically find contact information on the product packaging, the official JUNLIT website, or through the retailer where you purchased the product.

We are committed to providing quality products and support to our customers.