

CLOUDY BAY CBLD001WHA

Cloudy Bay In-Wall Dimmer Switch CBLD001WHA User Manual

Model: CBLD001WHA

INTRODUCTION

This manual provides detailed instructions for the installation, operation, and maintenance of your Cloudy Bay In-Wall Dimmer Switch, Model CBLD001WHA. This dimmer switch is designed for use with LED, CFL, and incandescent light fixtures, offering both single-pole and 3-way control options. Please read these instructions carefully before installation and retain them for future reference.



Front view of the Cloudy Bay In-Wall Dimmer Switch.

SAFETY INFORMATION

- **WARNING:** To avoid fire, shock, or death, turn off power at the circuit breaker or fuse and test that power is off before wiring.
- Install in accordance with all national and local electrical codes.
- If you are unsure about any part of these instructions, consult a qualified electrician.
- Do not use with non-dimmable light sources.
- This dimmer is for indoor use only.

WHAT'S IN THE BOX

Verify that all components are present before beginning installation:

- 1 x Dimmer Switch
- 1 x Screwless Cover Plate (Outer Plate)

- 1 x Inner Plate (Mounting Frame)
- 4 x Wire Nuts
- 4 x Mounting Screws

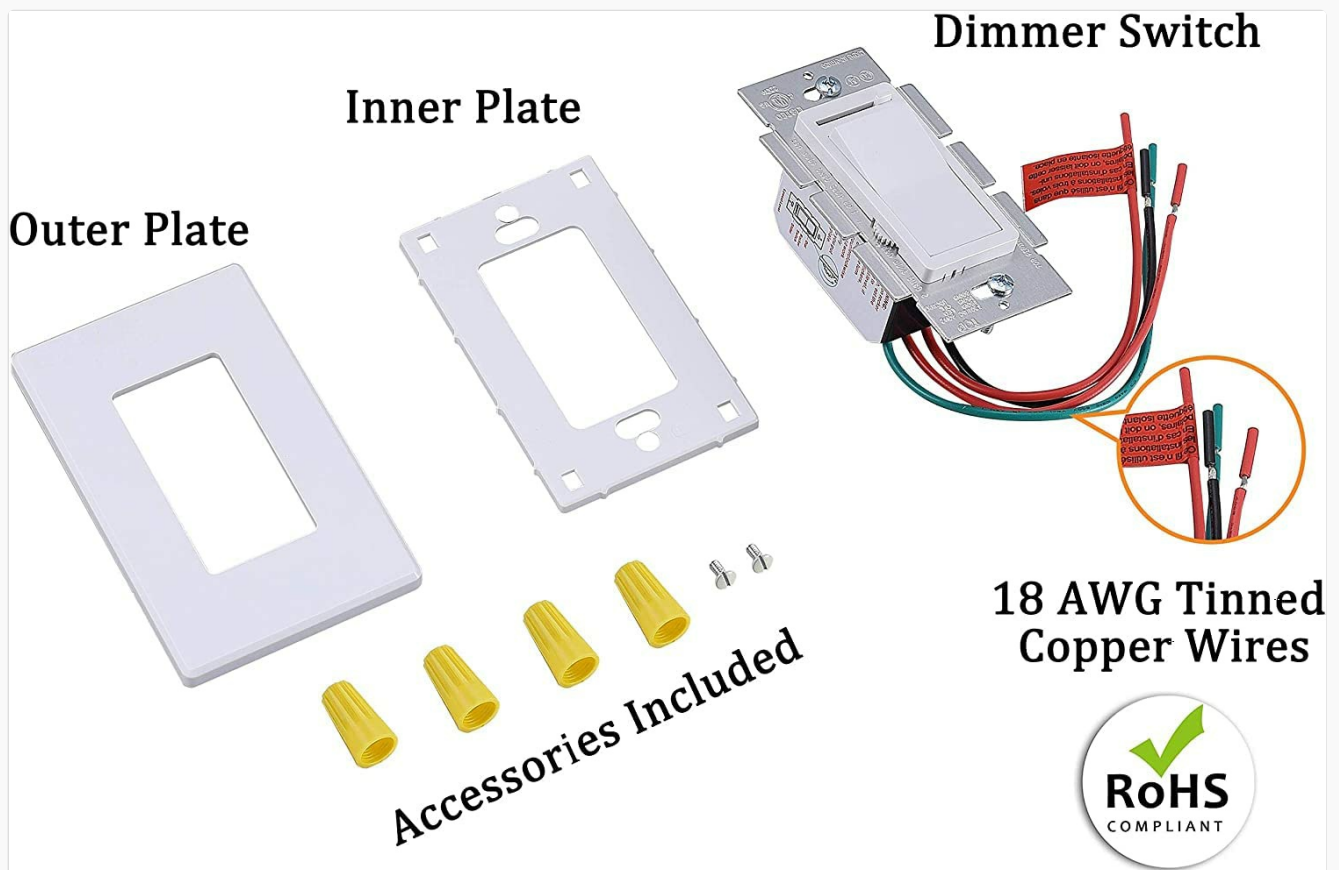


Illustration of the dimmer switch components, including the dimmer unit, inner plate, outer plate, wire nuts, and mounting screws.

SETUP AND INSTALLATION

Step 1: Turn Off Power

Before starting any electrical work, turn off the power at the circuit breaker or fuse box. Ensure the power is off by testing the circuit with a voltage tester.

Step 2: Remove Existing Switch

Carefully remove the wall plate and mounting screws from the existing switch. Gently pull the old switch out of the electrical box. Do not disconnect wires yet.

Step 3: Identify Circuit Type and Wires

Determine if your wiring is a single-pole or 3-way configuration. A single-pole circuit controls lights from one location, while a 3-way circuit controls lights from two locations.

Single-Pole Wiring:

Typically involves two wires connected to the switch (Hot Input and Load) plus a ground wire. One of the red wires on the dimmer will be capped off.



Diagram illustrating single-pole wiring for the dimmer switch, showing connections for hot input, load, and ground wires.

3-Way Wiring:

Involves three wires connected to the switch (Hot Input, Traveler 1, Traveler 2) plus a ground wire. The dimmer switch will replace one of the existing 3-way switches.

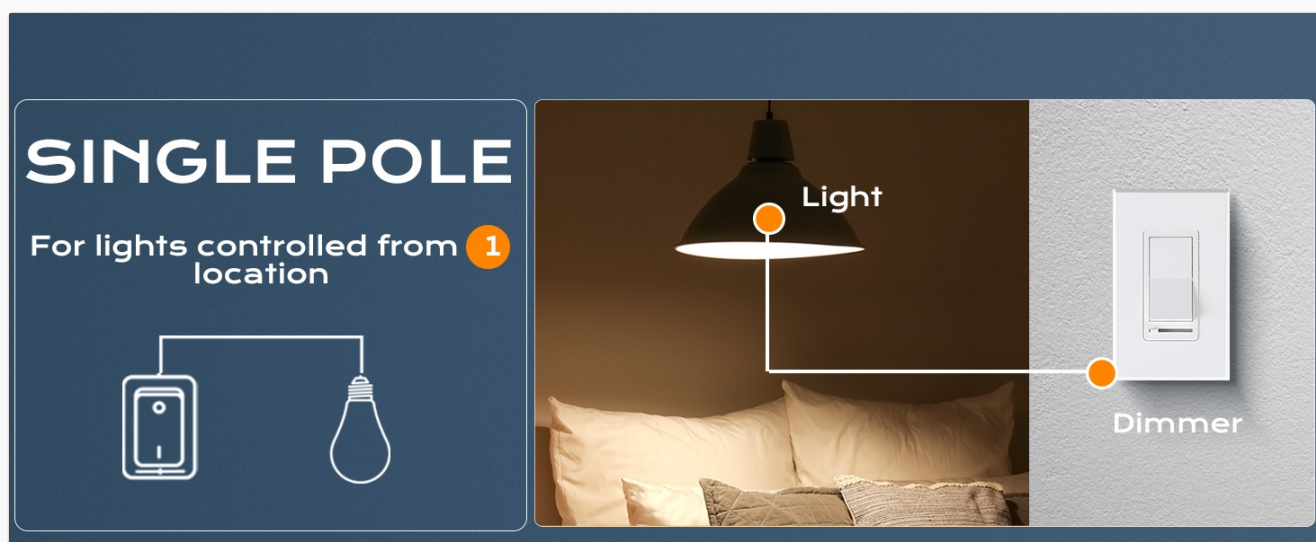


Diagram illustrating 3-way wiring for the dimmer switch, showing connections for hot input, two traveler wires, and ground.

Step 4: Wire Your New Dimmer

Connect the dimmer switch wires to the house wires using the provided wire nuts. Ensure all connections are secure.

- Connect the **green or bare copper ground wire** from the wall box to the **green wire** on the dimmer.
- Connect the **black dimmer wire** to the **hot input wire** from the wall box.
- For **Single-Pole**: Connect one of the **red dimmer wires** to the **load wire** (to the light fixture). Cap off the other red dimmer wire with a wire nut.
- For **3-Way**: Connect the two **red dimmer wires** to the two **traveler wires** from the wall box. If the on/off direction is reversed after wiring, try switching the two red wires.

Installing Dimmers

1 TURN POWER OFF

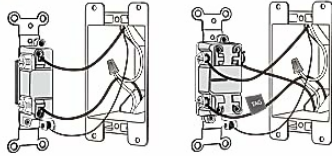
Turn power off at circuit breaker or remove fuse.

WARNING: SHOCK HAZARD. MAY RESULT IN SERIOUS INJURY OR DEATH. TURN OFF POWER AT CIRCUIT BREAKER BEFORE INSTALLING DIMMER

2 REMOVE EXISTING DIMMER OR SWITCH

Take off wall-plate and switch by removing mounting screws. Carefully pull out switch from wall (do not remove wires).

3 IDENTIFY THE TYPE OF CIRCUIT



SINGLE-POLE:

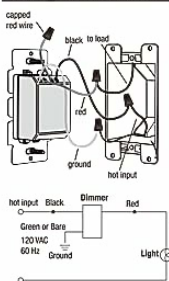
If switch is wired with insulated wires connected to two screws of the same colour. Go to Step 4a.

3-WAY:

If switch is wired with insulated wires connected to three screws and one of these wires is connected to a screw of a different colour (not green) or labeled COMMON, mark or tag this wire to identify it when wiring. Go to Step 4b.

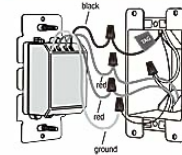
4 WIRE YOUR NEW DIMMER

4a Single Pole Circuit



- Connect the **green or bare** dimmer ground wire to the green or bare copper ground wire in the wall-box
- Connect the **black** dimmer wire to the hot input wire removed from the switch.
- Connect one of the **red** dimmer wires to the light fixture wire (load) removed from the switch.
- Use remaining wire nut to cap the remaining **red** wire on dimmer.

4b 3-Way Circuit

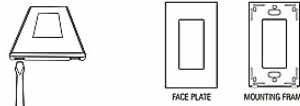


IMPORTANT:

In a 3-WAY circuit, only one dimmer can be used

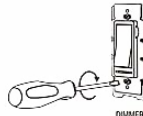
- Connect the **green or bare** dimmer ground wire to the green or bare copper ground wire in the wall-box.
- Connect the **black** dimmer wire to the tag wire removed from the switch.
- Connect the **red** dimmer wires to the remaining wires removed from the switch.

5 SEPARATE MOUNTING FRAME FROM WALL PLATE



Gently insert screwdriver into slots to separate mounting frame from wall plate.

6 INSERT DIMMER INSIDE THE WALL-BOX



- Carefully position all wires inside the wall-box, leaving enough room to insert the dimmer housing.
- Mount the dimmer securely inside the wall-box using the provided mounting screws.

7 TURN POWER ON

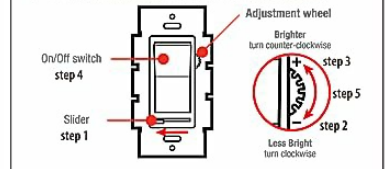
- Turn power on at circuit breaker or replace the fuse. Try out your new dimmer.
- If you're satisfied with dimming range and light output of your bulbs, proceed to step 8.

NOTE: Most dimmable LEDs may not dim as low as incandescent or halogen bulbs. Dimming range of dimmable LEDs can vary from manufacturer to manufacturer. This dimmer has an adjustable dimming range. If your bulbs hum, buzz or flicker see below for dimmer adjustment.

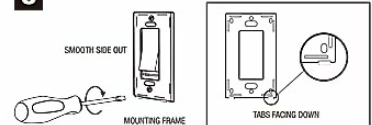
ADJUSTING DIMMING RANGE:

The dimmer can be adjusted to eliminate lamp flicker at the low end of the dimming range by following these steps:

- 1 Turn dimmer on and move slider all the way to the left.
- 2 Turn adjustment wheel down (clockwise).
- 3 Turn adjustment wheel up (counter-clockwise) to achieve lowest light level so that light output is stable for all bulbs. Set your slider to where there's no hum or flickering on all bulbs.
- 4 Turn dimmer off - then back on to make sure bulbs turn on
- 5 If all bulbs do not turn on, turn adjustment wheel up slightly (counter-clockwise) and repeat step 3.
- 6 Once all bulbs are properly dimming, install face plate.



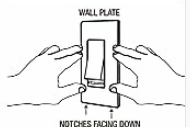
8 INSTALL MOUNTING FRAME



Place the mounting frame over your installed dimmer and secure it using provided screws.

9 INSTALL WALL PLATE

Place the decorative wall plate over the installed mounting frame with the top first then the bottom. Gently push wall plate to ensure flush fit.



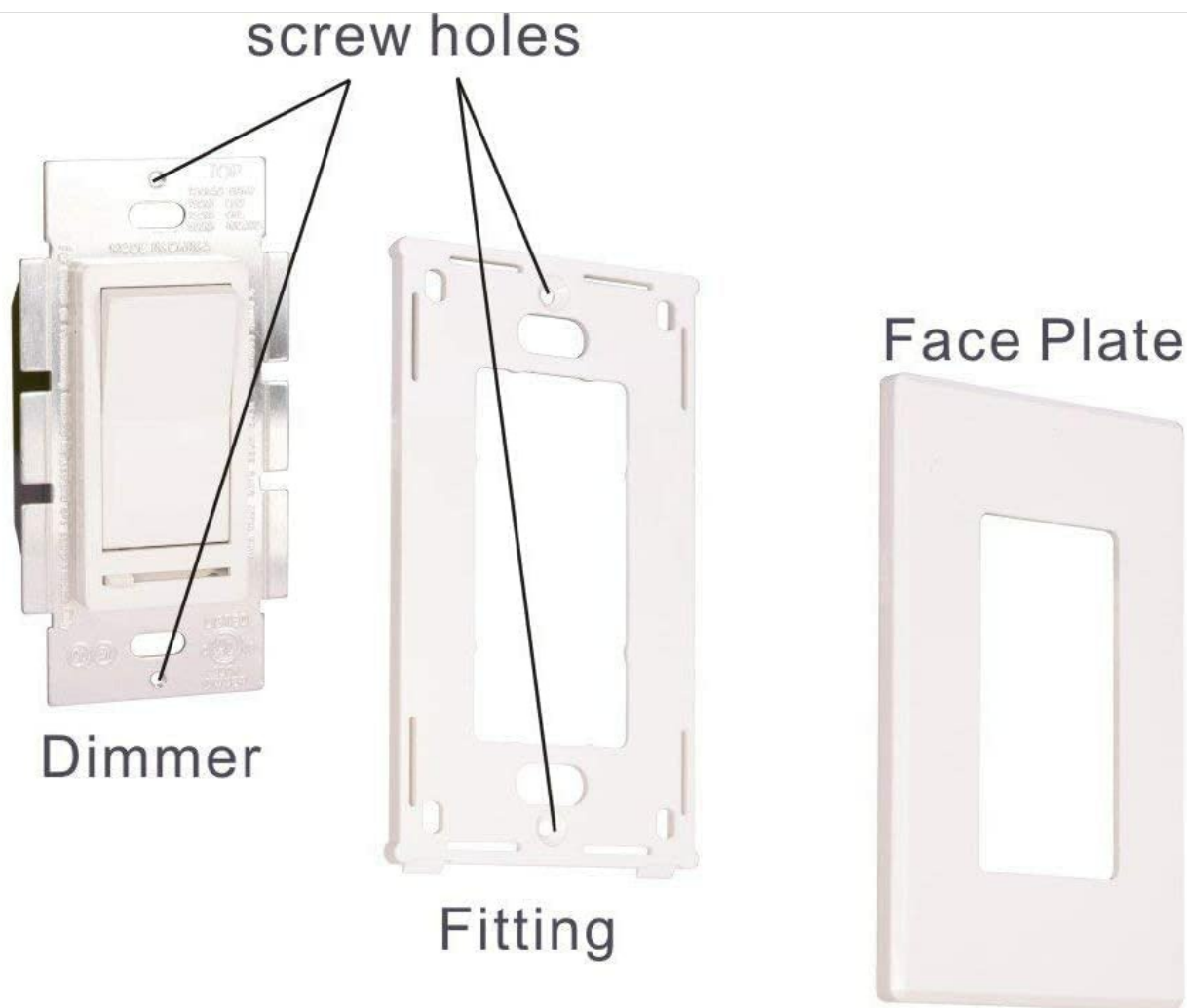
Detailed diagram showing wiring connections for both single-pole and 3-way installations, along with steps for mounting and adjusting the dimming range.

Step 5: Mount the Dimmer

Carefully push all wires into the wall box, leaving enough room to insert the dimmer. Secure the dimmer to the wall box using the provided mounting screws.

Step 6: Separate Mounting Frame from Wall Plate

Gently insert a flat-head screwdriver into the slots on the side of the wall plate to separate the inner mounting frame from the outer decorative wall plate.



1. Place fitting over dimmer
2. Install dimmer and fitting into electrical box using 2 screws
3. Snap face plate into fitting

Illustration demonstrating the separation of the face plate from the mounting frame.

Step 7: Install Wall Plate

Place the decorative wall plate over the installed mounting frame. Snap the outer plate onto the inner frame until it clicks securely into place.

Step 8: Adjust Dimming Range (Sensitivity Adjustment)

A trim dial located below the cover plate allows for sensitivity adjustment to optimize compatibility with various LED lamps and prevent flickering at low light levels.

1. Turn power on at the circuit breaker.
2. Turn the dimmer on and set the slide control to the lowest dimming level.
3. Remove the outer wall plate to access the trim dial.
4. Use a small screwdriver to turn the trim dial clockwise to increase the minimum brightness or counter-clockwise to decrease it. Adjust until the desired minimum light level is achieved without flickering.
5. Turn the dimmer off, then back on to ensure the bulbs turn on consistently at the minimum setting.
6. Once adjusted, replace the outer wall plate.

SINGLE POLE

For lights controlled from location 1



Single Pole Wiring

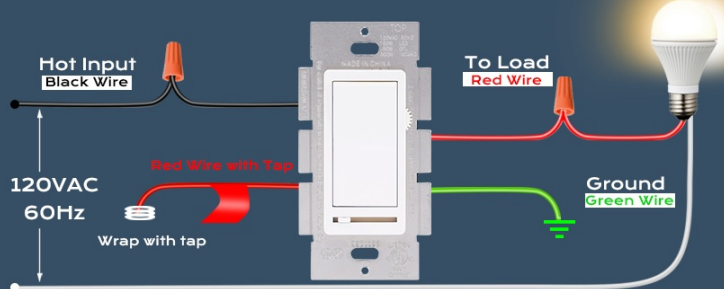


Illustration detailing the location and function of the dimming range adjustment wheel.

OPERATING INSTRUCTIONS

The Cloudy Bay Dimmer Switch features a rocker switch for on/off control and a slide control for dimming.

- **Rocker Switch:** Press the top of the rocker switch to turn lights ON. Press the bottom to turn lights OFF.
- **Slide Control:** Move the slider up to increase brightness and down to decrease brightness.

SINGLE POLE

For lights controlled from location 1



Single Pole Wiring

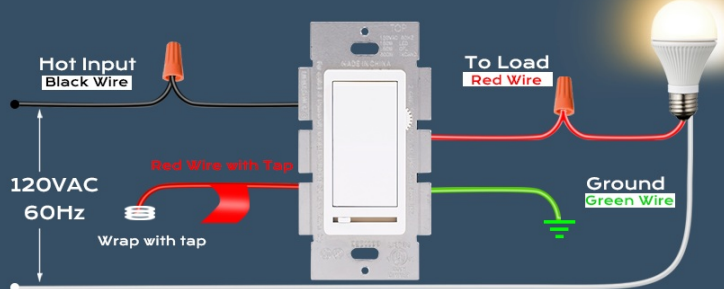


Illustration of the dimmer switch controls: rocker switch for on/off and slide control for brightness adjustment.

COMPATIBILITY

This dimmer switch is compatible with the following bulb types:

- **Incandescent:** Up to 600W (120V/60Hz)
- **Dimmable CFL:** Up to 150W (120V/60Hz)
- **Dimmable LED:** Up to 150W (120V/60Hz)

Important Notes:

- Do not mix bulb types on the same dimmer circuit.
- Dimmable LEDs may not dim to the same low level as incandescent or halogen bulbs. The dimming range of

LEDs can vary by manufacturer. If your bulbs hum, buzz, or flicker, they may not be fully compatible with this dimmer. Refer to the 'Adjusting Dimming Range' section for optimization.



Visual representation of the dimmer's compatibility with different bulb types and associated wattage ratings.

MAINTENANCE

The dimmer switch requires minimal maintenance. To clean, gently wipe the surface with a soft, damp cloth. Do not use abrasive cleaners or solvents.

TROUBLESHOOTING

Issue	Solution
Light flashes in the whole dimming range	<ul style="list-style-type: none">• Check if the lighting/lamp is dimmable.• Ensure the lighting fixture is compatible with this dimmer.• Most dimmable LEDs and CFLs will not achieve as low a level as incandescent or halogen sources.• Controlling a group of lighting fixtures/lamps with one dimmer may cause flicker due to variation in dimming circuit and dimming range. Use the dimmer to control lights/lamps of the same type or model.
Light flashes in low dimming range	Slightly turn the adjustment dial counter-clockwise to achieve full compatibility with the lights. Refer to 'Adjusting Dimming Range' section.
Other issues	Obtain a dimmer compatibility list from your light bulb/lighting fixture supplier. A broader dimmer list often means less dimming issues like flicker or buzz. Consider using FCC compliant lighting products for stable performance.

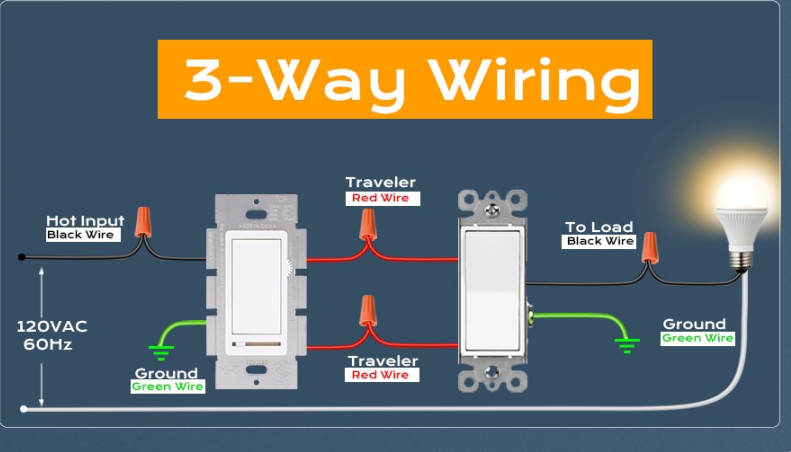
PRODUCT DETAILS



Visual representation of the troubleshooting guide, outlining common problems and their respective solutions.

SPECIFICATIONS

Feature	Specification
Model Number	CBLD001WHA
Operation Mode	ON-DIM-OFF
Current Rating	1.25 Amps
Operating Voltage	120 Volts
Contact Type	Normally Open
Connector Type	Clamp
Terminal	Screw
Circuit Type	3-way / Single Pole
Actuator Type	Push Button (Rocker)
Max Incandescent Load	600W
Max Dimmable LED/CFL Load	150W
Dimensions (L x W x H)	1.85 x 2.76 x 4.53 inches
Certifications	UL Listed



Detailed dimensions of the dimmer switch, inner plate, and outer plate.

WARRANTY AND SUPPORT

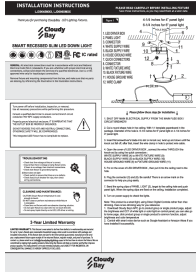
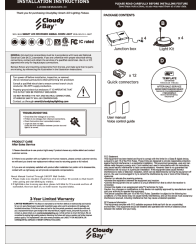
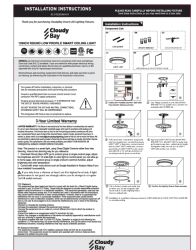
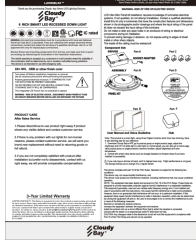
This Cloudy Bay Dimmer Switch comes with a 1-Year Warranty. If you encounter any issues with dimming or have questions regarding the product, please contact Cloudy Bay customer support for assistance.

For further support, please visit the [CLOUDY BAY Store](#) or refer to the official product documentation.

© 2025 Cloudy Bay. All rights reserved.

Related Documents - CBLD001WHA

	<p>Cloudy Bay LJD005SMG2WH-6PK 3 Inch Smart LED Recessed Down Light Installation Guide</p> <p>Step-by-step installation instructions for the Cloudy Bay LJD005SMG2WH-6PK 3-inch Smart LED Recessed Down Light, including package contents, safety precautions, wiring, and mounting. Learn how to install and connect your smart lighting fixture.</p>
	<p>Cloudy Bay 4 Head WiFi/BLE Ceiling Track Light Installation Instructions</p> <p>Step-by-step installation guide for the Cloudy Bay 4 Head WiFi/BLE Ceiling Track Light, including wiring, mounting, and warranty information.</p>

	<p>Cloudy Bay Smart Recessed Slim LED Down Light Installation Instructions</p> <p>Comprehensive installation guide for Cloudy Bay Smart Recessed Slim LED Down Lights (models LJD004SMXX, LJD006SMXX), including wiring, troubleshooting, and warranty information.</p>
	<p>Cloudy Bay LJD006GBSMG2WH-XX Smart LED Gimbal Down Light Installation Guide</p> <p>Comprehensive installation instructions for the Cloudy Bay LJD006GBSMG2WH-XX Wifi-BLE Smart LED Recessed Gimbal Down Light with Back Light. Includes package contents, installation overview, troubleshooting, product care, and warranty information.</p>
	<p>Cloudy Bay 12-Inch Round Low Profile Smart Ceiling Light Installation Instructions</p> <p>Comprehensive installation guide for the Cloudy Bay 12-Inch Round Low Profile Smart Ceiling Light, including component list, safety precautions, wiring instructions, and warranty information.</p>
	<p>Cloudy Bay 6 Inch Smart LED Recessed Down Light Installation and User Manual</p> <p>Comprehensive guide for installing and using the Cloudy Bay 6 Inch Smart LED Recessed Down Light (LJD006BLXX), including setup, app control, voice commands with Alexa and Google Assistant, and warranty information.</p>