



[Manuals.plus](#) /

> [IFB](#) /

> IFB 9 KG Fully-Automatic Top Load Washing Machine (TL-SLBS 9.0KG AQUA) User Manual

IFB TL-SLBS 9.0KG AQUA

IFB 9 KG Fully-Automatic Top Load Washing Machine User Manual

Model: TL-SLBS 9.0KG AQUA (IFBST15)

[Setup](#)

[Operating Instructions](#)

[Maintenance](#)

[Troubleshooting](#)

[Specifications](#)

[Warranty &](#)

[Support](#)

INTRODUCTION

This manual provides essential information for the safe and efficient operation, installation, and maintenance of your IFB 9 KG Fully-Automatic Top Load Washing Machine, model TL-SLBS 9.0KG AQUA. Please read these instructions carefully before using the appliance and retain them for future reference.

IMPORTANT SAFETY INSTRUCTIONS

- Ensure the washing machine is installed on a stable, level surface to prevent vibration and noise.
- Do not operate the machine if the power cord is damaged. Contact authorized service personnel for repairs.
- Keep children and pets away from the appliance during operation.
- Do not wash items that have been cleaned in, washed in, soaked in, or spotted with combustible or explosive substances such as gasoline, kerosene, or cooking oils.
- Always unplug the appliance before cleaning or performing any maintenance.
- This appliance is equipped with HIGH-LOW VOLTAGE PROTECTION. However, avoid operating during extreme voltage fluctuations.

SETUP AND INSTALLATION

Unpacking

Carefully remove all packaging materials. Check for any damage during transit. The package includes 1 Unit Washing Machine, Outlet Drain Pipe, and this User Manual.

Location

Place the washing machine on a firm, level floor. Ensure there is adequate space around the machine for ventilation and access. Avoid direct sunlight or areas with high humidity.

Leveling

Adjust the leveling feet at the bottom of the machine until it is perfectly stable and does not wobble. Proper leveling is crucial for reducing noise and vibration during operation.

Water Supply Connection

Connect the water inlet hose to a cold water tap. Ensure connections are tight to prevent leaks.

Drain Hose Installation

Securely attach the outlet drain pipe to the machine and position it to drain into a sink or standpipe. Ensure the drain hose is not kinked or blocked.

Power Connection

Plug the power cord into a grounded electrical outlet. Ensure the voltage matches the requirements specified on the appliance rating label.



Image: Front-side view of the IFB 9 KG Fully-Automatic Top Load Washing Machine. This image shows the overall design and dimensions of the appliance.

OPERATING INSTRUCTIONS

Loading Laundry

Open the top lid and load clothes into the drum. Do not overload the machine. For optimal washing, ensure clothes are distributed evenly.



Image: Top view of the washing machine with the lid open, revealing the stainless steel drum where laundry is loaded.

Adding Detergent and Softener

Add the appropriate amount of detergent and fabric softener to their respective dispensers. Refer to detergent packaging for recommended quantities based on load size and water hardness.

Selecting a Wash Program

Turn the program selector knob to choose the desired wash program. The machine offers various programs including:

- **Steam Wash at 95 Degrees:** For deep cleaning and sanitization, utilizing the built-in heater.
- **My Cycle:** Customizable program.
- **Delicate:** For sensitive fabrics.
- **Baby Wear:** Gentle wash for baby clothes.
- **Sportswear:** Optimized for athletic apparel.
- **Express:** Quick wash cycle.

- **Aqua:** Water-efficient cycle.
- **Standard:** General daily wash.

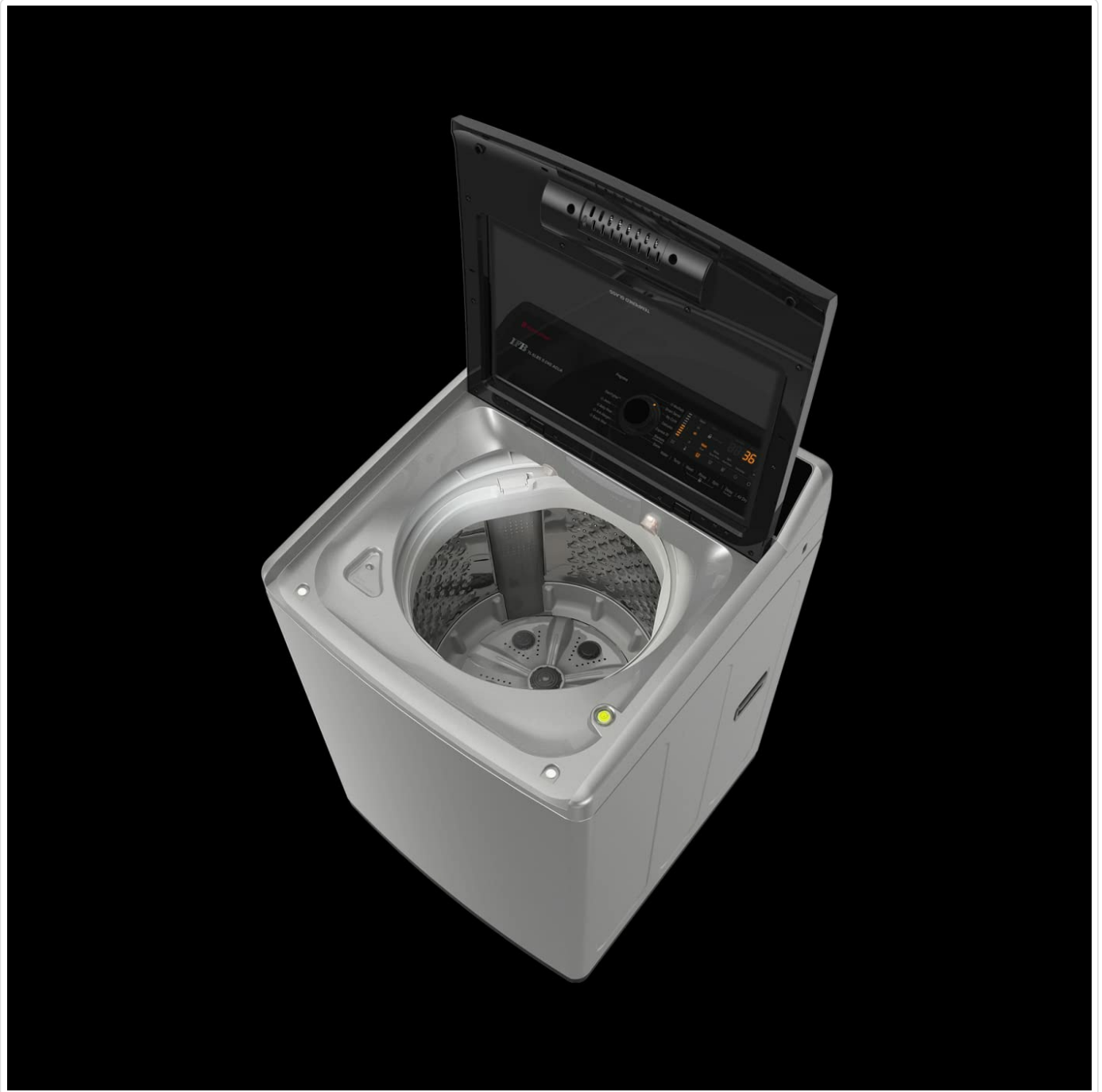


Image: Close-up of the washing machine's control panel, showing the program selector knob, display, and various function buttons.

Starting the Wash Cycle

Press the **Start/Pause** button to begin the selected wash program. The machine will automatically fill with water, wash, rinse, and spin.

Power Steam Feature

This model includes a built-in heater for Power Steam functionality, allowing for washes at up to 95 degrees Celsius to ensure 99.99% germ-free results. Select a program that utilizes this feature for enhanced hygiene.



Image: A graphic representation of the built-in heater, highlighting its ability to provide a 99.99% germ-free hot wash.

MAINTENANCE AND CARE

Cleaning the Exterior

Wipe the exterior of the washing machine with a soft, damp cloth. Do not use abrasive cleaners or solvents.

Cleaning the Detergent Dispenser

Regularly remove and clean the detergent dispenser drawer to prevent residue buildup. Rinse with warm water and dry thoroughly before reinserting.

Cleaning the Lint Filter

Locate and clean the lint filter periodically to ensure efficient drainage and prevent lint transfer to clothes. Refer to the specific location in your full user manual.

Drum Cleaning

Run a drum clean cycle (if available) or a hot wash cycle with an empty drum and a washing machine cleaner to remove detergent residue and odors.

Winterizing (if applicable)

If the machine is to be left in an unheated area during winter, drain all water from the hoses and pump to prevent freezing damage.

TROUBLESHOOTING GUIDE

Problem	Possible Cause	Solution
Machine does not start	Power cord not plugged in; Door not closed properly; Power outage.	Check power connection; Ensure lid is fully closed; Check household circuit breaker.
Excessive vibration/noise	Machine not level; Load unbalanced; Transit bolts not removed.	Adjust leveling feet; Redistribute laundry; Ensure transit bolts are removed (if applicable for top load). This model features AUTO IMBALANCE VIBRATION CONTROL, but severe imbalance may still cause issues.
Water not draining	Drain hose kinked or blocked; Drain filter clogged.	Straighten drain hose; Clean drain filter.
Water leakage	Hose connections loose; Detergent overdose causing excessive suds.	Tighten hose connections; Use appropriate amount of detergent.
Error code displayed	Specific malfunction.	Refer to the comprehensive user manual for a list of error codes and their solutions, or contact customer support.

For issues not listed here, or if problems persist, please contact IFB customer service.

PRODUCT SPECIFICATIONS

Brand	IFB
Model Name	TL-SLBS 9.0KG AQUA
Model Number	IFBST15 (8903287022418)
Capacity	9 Kilograms
Maximum Rotational Speed	1200 RPM
Access Location	Top Load
Special Features	High Efficiency, Built-in Heater (for Steam Wash), High-Low Voltage Protection, Auto Imbalance Vibration Control
Included Components	1 Unit Washing Machine, Outlet Drain Pipe, User Manual

Item Weight	46 kg
Item Dimensions (LxWxH)	57 x 64 x 103 Centimeters
Manufacturer	IFB, IFB Industries Ltd.

WARRANTY AND SUPPORT

Your IFB Washing Machine comes with IFB's TRISHIELD PROTECTION, which includes:

- **4-Year Machine Warranty:** Comprehensive coverage for the appliance.
- **10-Year Motor Warranty:** Extended warranty specifically for the motor.
- **10-Year Spares Support:** Assurance of spare parts availability for a decade.

For warranty claims, service requests, or technical assistance, please contact IFB customer support. Keep your purchase receipt and product serial number handy.

For more detailed information, refer to the complete user manual included with your product or visit the official IFB website.

© 2024 IFB Industries Ltd. All rights reserved.

This manual is for informational purposes only. Specifications are subject to change without notice.