

Petory F01W

Petory Automatic Wi-Fi Pet Feeder (Model F01W) Instruction Manual

Comprehensive guide for setup, operation, and maintenance of your Petory 4L Dry Food Dispenser for cats and dogs.



1. INTRODUCTION

Thank you for choosing the Petory Automatic Wi-Fi Pet Feeder. This device is designed to provide scheduled and controlled feeding for your cats and dogs, ensuring they receive their meals consistently. This manual provides detailed instructions for setting up, operating, and maintaining your feeder.

Brand: Petory

Model: F01W

2. PRODUCT OVERVIEW

The Petory Automatic Wi-Fi Pet Feeder is a 4-liter dry food dispenser featuring smart controls via a mobile application. Key features include:

- **App-Controlled Programming:** Connects to 2.4GHz Wi-Fi via Bluetooth for flexible feeding schedules.
- **Customizable Meals:** Up to 10 meals daily with 1-50 portions per meal (approximately 1/10 cup per portion).
- **Timely Notifications:** Receive alerts for low food levels, food blockages, or Wi-Fi interruptions.
- **Dual Power Supply:** Operates with external power and includes a backup battery option to ensure continuous feeding during power outages.
- **Large Capacity:** Stores up to 16.9 cups of dry food (kibble diameter under 0.7 inches), sufficient for extended periods. Includes a desiccant bag to maintain food freshness.
- **Voice Recorder:** A 10-second voice recording feature to call your pet at meal times.
- **Easy Maintenance:** Removable hopper and bowl are dishwasher-safe for convenient cleaning. Constructed from BPA-free plastic and stainless steel.



Figure 1: Petory Automatic Wi-Fi Pet Feeder and its accompanying mobile application interface.

3. SETUP

3.1 Unpacking and Assembly

1. Remove all components from the packaging.
2. Ensure all parts are present: feeder base, food hopper, stainless steel bowl, bowl holder, power adapter, and desiccant bag.
3. Insert the stainless steel bowl into the bowl holder.
4. Place the assembled bowl unit in front of the feeder base.

5. Open the lid of the food hopper and insert the desiccant bag into its designated holder to keep food fresh.
6. Fill the food hopper with dry kibble. Ensure kibble diameter is under 0.7 inches to prevent blockages.
7. Close the lid securely.

3.2 Power Supply

The feeder supports dual power supply for reliability.

- **External Power:** Connect the provided 5V power adapter to the feeder and a wall outlet.
- **Backup Battery (Optional, Not Included):** For uninterrupted operation during power outages, install 3 D-size batteries in the battery compartment located at the bottom of the feeder.

Never Miss a Meal

Backup batteries will keep dispensing if the power goes out



D Battery*3
(Not Include)



5V Power
Adapter



Figure 2: Power supply options for the feeder, including external adapter and D-size battery backup.

3.3 App Installation and Wi-Fi Connection

1. **Download the App:** Scan the QR code below or search for "Petory Smart" in your mobile app store (iOS/Android) to download the application.



Figure 3: Scan this QR code to download the Petory Smart application.

2. **Register/Log In:** Open the app and create a new account or log in if you already have one.
3. **Add Device:** Follow the in-app instructions to add your new feeder. Ensure your phone's Bluetooth is enabled and the feeder is in pairing mode. The app will search for nearby devices.

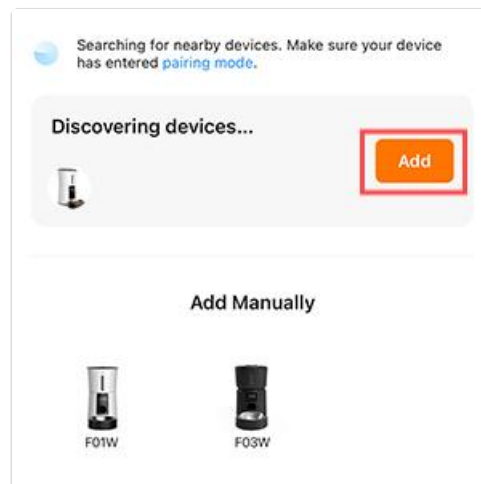


Figure 4: The app interface during device discovery, prompting to add the feeder.

4. **Connect to Wi-Fi:** Select your 2.4GHz Wi-Fi network and enter the password when prompted. The feeder does not support 5GHz Wi-Fi networks.



Figure 5: App screen for entering Wi-Fi network details.

5. Once connected, the feeder's Wi-Fi indicator light will confirm the connection.

4. OPERATING INSTRUCTIONS

4.1 Setting a Feeding Schedule

Use the Petory Smart app to program your pet's feeding schedule.

1. Open the Petory Smart app and select your feeder.
2. Navigate to the "Schedule" or "Meal Plan" section.
3. Set the desired meal times (up to 10 meals per day).
4. For each meal, specify the number of portions (1-50 portions, where 1 portion is approximately 1/10 cup).
5. The app also allows for a "Slow Feed Choice" to dispense food gradually.
6. Save your settings. The feeder will now dispense food according to the programmed schedule.

Setting Easier and Convenient

Program feeding schedules anywhere anytime on your phone



1-50 Portions



1-10 Meals



Slow Feed Choice



Figure 6: Programming feeding schedules via the mobile application.

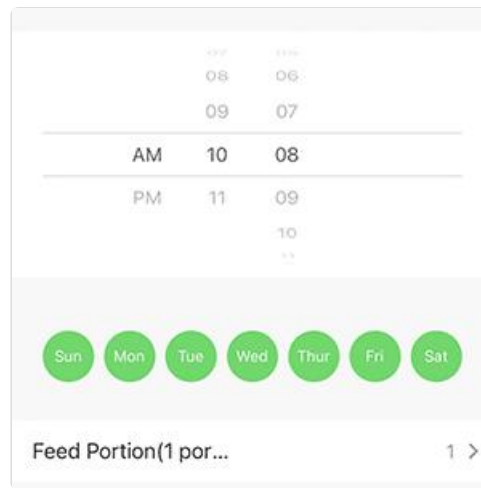


Figure 7: Detailed view of setting meal times and portions within the app.

4.2 Manual Feeding

You can dispense food manually at any time using the app or the physical button on the feeder.

- **Via App:** On the main screen of the Petory Smart app, locate the "Manual Feed" option and select the number of portions to dispense.
- **Via Feeder Button:** Press the manual feed button on the feeder's control panel to dispense one portion.

4.3 Voice Recording

Record a 10-second message to play at meal times to call your pet.

1. Locate the voice recording button on the feeder's control panel.
2. Press and hold the button to begin recording your message.
3. Release the button to save the recording. The recorded message will play automatically before each scheduled meal.

4.4 Control Panel Lock

The feeder features a control panel lock to prevent accidental changes by pets or children.



Figure 8: The lock icon on the control panel indicates the panel is locked.

5. MAINTENANCE

5.1 Cleaning the Feeder

Regular cleaning ensures hygiene and proper functioning of the feeder.

1. **Disassembly:** Rotate the food hopper counter-clockwise to separate it from the feeder base. Remove the stainless steel bowl from its holder.



Figure 9: Detaching the food hopper by rotating it counter-clockwise.

Removable for Cleaning



Figure 10: Removable parts of the feeder suitable for washing.

2. **Washing:** The food hopper and the stainless steel bowl are dishwasher-safe. Alternatively, wash them by hand with mild soap and water.
3. **Drying:** Ensure all parts are completely dry before reassembly to prevent moisture from affecting the kibble or electronics.
4. **Base Cleaning:** Wipe the feeder base with a damp cloth. Do not submerge the base in water.
5. **Reassembly:** Reattach the food hopper by aligning it with the base and rotating clockwise until secure. Place the clean bowl back into its holder.

5.2 Desiccant Bag Replacement

The desiccant bag helps keep the dry food fresh. Replace it periodically (e.g., every 1-2 months) for optimal

performance.



Figure 11: Location of the desiccant bag holder within the feeder lid.

6. TROUBLESHOOTING

Problem	Possible Cause	Solution
Feeder not dispensing food.	Food hopper is empty. Food blockage. Power supply issue. Incorrect schedule settings.	Refill the food hopper. Check for kibble jams in the dispenser mechanism. Ensure kibble size is appropriate (under 0.7 inches). Verify power adapter is connected and working. Check backup batteries if installed. Review and adjust feeding schedule in the app.
No app notifications.	Feeder is offline. App notification settings disabled.	Check Wi-Fi connection. Reconnect if necessary. Enable notifications for the Petory Smart app in your phone's settings.
Feeder offline/Wi-Fi disconnected.	Router issue or power outage. Feeder too far from router. Incorrect Wi-Fi password.	Restart your Wi-Fi router. Move the feeder closer to your Wi-Fi router. Re-enter Wi-Fi credentials in the app. Ensure you are connecting to a 2.4GHz network.
Power drops out/resets.	Unreliable external power source. No backup batteries or low battery power.	Ensure the power adapter is securely connected and the outlet is functional. Install fresh D-size backup batteries.

Get Alarms for Peace of Mind

Notifications come in when device is offline, or food is empty or blocked.



Figure 12: Example of a food blockage notification received on the mobile app.

7. SPECIFICATIONS

Feature	Detail
Model Number	F01W
Capacity	4 Liters (approx. 16.9 cups dry food)

Feature	Detail
Material	BPA-free Plastic, Stainless Steel (bowl)
Color	White
Dimensions (LxWxH)	13 x 7.5 x 13 inches
Item Weight	4.44 pounds
Power Supply	5V Power Adapter (included), 3 x D-size Batteries (not included)
Wi-Fi Connectivity	2.4GHz Wi-Fi (Bluetooth for initial pairing)
Max Meals per Day	10
Portions per Meal	1-50 (approx. 1/10 cup per portion)
Kibble Size	Under 0.7 inches diameter
Special Features	Voice Recording, Desiccant Bag Holder, App Control, Dual Power
Target Species	Cats, Dogs (Small Breeds)
Care Instructions	Hand Wash Only (base), Dishwasher-safe (hopper, bowl)

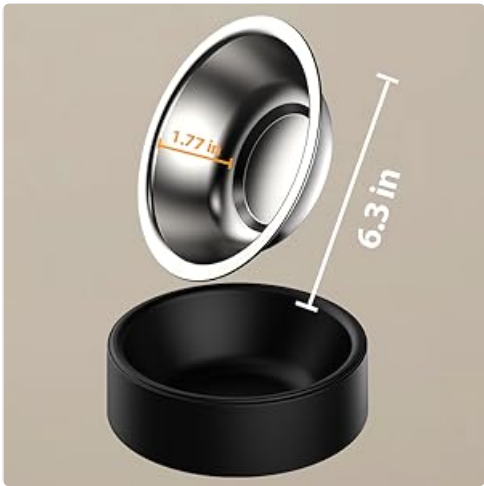


Figure 13: Dimensions of the stainless steel food bowl.


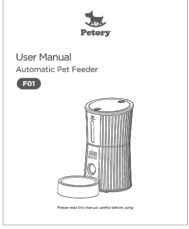




8. WARRANTY AND SUPPORT

Warranty: This Petory Automatic Wi-Fi Pet Feeder (Model F01W) comes with a 1-Year Warranty from the date of purchase.

For technical support, troubleshooting assistance, or warranty claims, please contact Petory customer service through the contact information provided on the official Petory website or through your purchase platform.



Related Documents - F01W

	<p>Petory F01 Automatic Pet Feeder User Manual</p> <p>Comprehensive user manual for the Petory F01 Automatic Pet Feeder. Learn how to install, operate, program feeding schedules, and troubleshoot your pet's automatic food dispenser. Includes safety information, product specifications, and cleaning instructions.</p>
	<p>Petory F01 Automatic Pet Feeder User Manual</p> <p>Comprehensive user manual for the Petory F01 Automatic Pet Feeder. Learn how to install, operate, program feeding schedules, and troubleshoot your pet's automatic food dispenser. Includes safety information, product specifications, and cleaning instructions.</p>
	<p>Dudupet Automatic Pet Feeder DU-F01W User Manual and Guide</p> <p>Comprehensive user manual for the Dudupet Automatic Pet Feeder (Model DU-F01W), covering specifications, setup, operation, maintenance, app usage, and troubleshooting. Learn how to use your pet feeder safely and effectively.</p>
	<p>Confidentiality Request Letter - Shenzhen Patpet Automatic Pet Feeder Models</p> <p>Official request for confidentiality of technical documents for Shenzhen Patpet Automatic Pet Feeder models PF1W, PF2W, PF3W, PF5W, F01W, F02W, F03W, F05W, FCC ID: 2AHHY-PF1W, submitted to Eurofins Electrical and Electronic Testing NA, Inc.</p>
	<p>Shenzhen Patpet Technology Automatic Pet Feeder Model Difference Letter</p> <p>Official letter from Shenzhen Patpet Technology Co., Ltd to the Federal Communications Commission detailing model differences for the Automatic Pet Feeder, including models PF1W, PF2W, PF3W, PF5W, F01W, F02W, F03W, and F05W, all sharing the same circuit and RF module.</p>
	<p>Shenzhen Patpet Automatic Pet Feeder PF1W RF Test Report</p> <p>Comprehensive RF compliance test report for the Shenzhen Patpet Automatic Pet Feeder, Model PF1W, covering conducted emissions, radiated emissions, power spectral density, bandwidth, and peak output power. Tested by Shenzhen BCTC Testing Co., Ltd.</p>

[\[pdf\]](#) User Manual

F01W 05 21 2 0 1 User Manual Petory Automatic Cat Feeders Wi Fi 4L Dry Food Dispenser for Cats and Dogs 10 Meals per Day Smart Pet Feeder with Desiccant Bag Dual Power Supply 10S Voice Recorder Supplies A1rpLYSmy1L m media amazon images I |||

5 2 ...

lang: **score:17** filesize: 1.61 M page_count: 1 document date: 2022-05-25

