

Bihui TSL50

Bihui Reusable Tile Leveling System TSL50 Instruction Manual

Model: TSL50

1. INTRODUCTION

This manual provides detailed instructions for the proper use and maintenance of the Bihui Reusable Tile Leveling System TSL50. This system is designed to assist in achieving perfectly level tile installations on both floors and walls, effectively preventing lippage and ensuring a professional finish. Please read these instructions carefully before use to ensure optimal performance and longevity of the product.

2. PRODUCT OVERVIEW AND COMPONENTS

The Bihui Reusable Tile Leveling System TSL50 is an innovative tool featuring a comfort spin handle and an anti-scratch base. It utilizes a durable 1.5mm steel T-pin for precise tile alignment.



Figure 2.1: Packaging of the Bihui Reusable Tile Leveling System TSL50, showing the product inside.



Figure 2.2: A close-up view of a single Bihui Reusable Tile Leveling Tool, highlighting its comfort spin handle and anti-scratch base.



Figure 2.3: Side view of the Bihui Tile Leveling Tool, showing the T-pin extending from the base.

Key features include:

- **Floor and Wall Compatibility:** Suitable for various tiling projects.
- **Anti-Scratch Large Cap:** Designed to protect tile surfaces during leveling.
- **Fast Spin-Down Handle:** Allows for quick and easy adjustment without additional tools.
- **Reusable Steel 1.5mm T-Pin:** Durable and designed for repeated use.
- **Tile Thickness Compatibility:** Suitable for tiles up to 11/16 inches (approximately 17.5mm) thick.
- **Joint Clearance:** Accommodates tile clearance up to 1/4 inch (approximately 6.35mm). For wider joints, use classic tile spacers in conjunction with this system.

3. SETUP

1. **Prepare the Surface:** Ensure the subfloor or wall surface is clean, dry, and structurally sound.

2. **Apply Adhesive:** Spread tile adhesive evenly according to the adhesive manufacturer's instructions.
3. **Place First Tile:** Lay the first tile into the adhesive, ensuring it is correctly positioned.

4. OPERATING INSTRUCTIONS

Follow these steps to effectively use the Bihui Reusable Tile Leveling System:

1. **Insert the T-Pin:** After placing the first tile and before placing the adjacent tile, insert the steel T-pin into the tile joint. Ensure the T-pin is fully seated under the edge of the first tile.
2. **Position the Next Tile:** Place the next tile adjacent to the first, ensuring the T-pin is now positioned between both tiles.
3. **Engage the Leveling Tool:** Rotate the comfort spin handle clockwise to lower the anti-scratch base onto the surface of the tiles. Continue spinning until both tiles are perfectly level and lippage is eliminated. The large cap protects the tile surface from scratches.
4. **Repeat:** Continue this process for all tiles, placing leveling tools at appropriate intervals around each tile to ensure consistent leveling.
5. **Curing Time:** Allow the tile adhesive to cure completely according to the manufacturer's recommendations. Do not remove the leveling tools before the adhesive has fully set.
6. **Remove the Tools:** Once the adhesive is fully cured, rotate the comfort spin handle counter-clockwise to disengage the T-pin from the tile joint. Carefully lift the leveling tool.

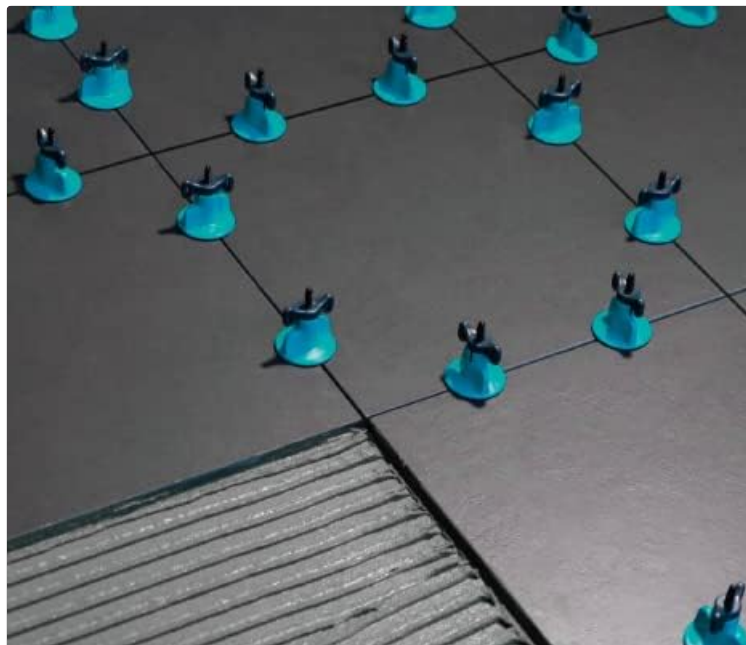


Figure 4.1: Bihui Reusable Tile Leveling Tools installed on a tiled surface, demonstrating their function in maintaining a level plane.

5. MAINTENANCE

The Bihui Reusable Tile Leveling System is designed for durability and reusability. To ensure a long lifespan:

- **Cleaning:** After each use, thoroughly clean the leveling tools to remove any residual tile adhesive or grout. The tools are fully washable.
- **Storage:** Store the tools in a clean, dry place to prevent damage and corrosion of the steel T-pins.
- **Inspection:** Periodically inspect the T-pins for any signs of bending or damage. While durable,

improper removal can cause bending.

6. TROUBLESHOOTING





- Issue: Metal T-pin bends during removal.**
Solution: Ensure the tile adhesive is completely cured before attempting to remove the leveling tools. Attempting to remove them prematurely can cause the T-pin to bend or damage the tile. Rotate the handle counter-clockwise completely to disengage the pin before lifting.
- Issue: Difficulty removing pins after adhesive has dried.**
Solution: This can occur if the T-pin was not inserted correctly or if excessive adhesive has cured around the pin. Ensure the T-pin is inserted cleanly into the joint and not embedded in too much adhesive. If removal is difficult, gently wiggle the tool while rotating counter-clockwise. Avoid forceful prying to prevent damage to tiles or the tool.

7. SPECIFICATIONS

Attribute	Detail
Model Number	TSL50
Manufacturer	BIHUI
Item Weight	1.87 pounds (approximately 0.85 kg)
Package Dimensions	7.64 x 7.56 x 4.02 inches (approximately 19.4 x 19.2 x 10.2 cm)
Item Package Quantity	1 (containing 50 pieces)
T-Pin Thickness	1.5mm
Max Tile Thickness	Up to 11/16 inches (approximately 17.5mm)
Max Tile Clearance	Up to 1/4 inch (approximately 6.35mm)

8. WARRANTY AND SUPPORT

For warranty information or technical support regarding your Bihui Reusable Tile Leveling System TSL50, please refer to the manufacturer's official website or contact their customer service department directly. Keep your purchase receipt as proof of purchase.
Manufacturer: BIHUI

 <p>BIHUI Electric Cutting System XXL2.0</p> <p>Image instructions</p> <p>Read the manual</p> <p>CE</p>	<p>BIHUI Electric Cutting System XXL2.0: Usage Instructions and Safety Guide</p> <p>Discover comprehensive usage instructions for the BIHUI Electric Cutting System XXL2.0. This guide details product application, assembly, operation, safety precautions, maintenance, and spare parts for efficient and safe cutting.</p>
 <p>BIHUI Self-levelling Green Beam Laser Level</p> <p>LLG16 Image instructions</p> <p>Universal</p> <p>Read the manual</p> <p>CE</p>	<p>Bihui LLG16 Self-levelling Green Beam Laser Level User Manual</p> <p>Comprehensive user manual for the Bihui LLG16 Self-levelling Green Beam Laser Level, covering product overview, operation, safety, maintenance, and specifications. Features include TFT display, self-levelling, and IP54 rating.</p>
 <p>BIHUI Automatic Cutting Machine</p> <p>TCSA 1200 Image instructions</p> <p>Read the manual</p> <p>CE</p>	<p>BIHUI TCSA1200 Automatic Cutting Machine: Usage Instructions and Safety Guide</p> <p>Comprehensive usage instructions, safety warnings, and specifications for the BIHUI TCSA1200 Automatic Cutting Machine. Learn how to operate, maintain, and ensure safety when using this tile cutting equipment.</p>
 <p>BIHUI 8" Battery Powered Vacuum Suction Cup</p> <p>SCBC8 Image instructions</p> <p>BPTT</p> <p>Read the manual</p>	<p>BIHUI SCBC8-M 8" Battery Powered Vacuum Suction Cup - Usage Instructions</p> <p>Comprehensive usage instructions for the BIHUI SCBC8-M 8" Battery Powered Vacuum Suction Cup. Covers safety warnings, application details, operation modes, maintenance, inspection, and warranty information for professional tiling and material handling.</p>