



Manuals.plus /

› ledmo /

› ledmo 15W Outdoor Wall Light Instruction Manual

ledmo 15W-2Packs-3000K

ledmo 15W Outdoor Wall Light Instruction Manual

Model: 15W-2Packs-3000K

1. INTRODUCTION

Thank you for choosing the ledmo 15W Outdoor Wall Light. This modern and durable lighting fixture is designed to provide bright, warm white illumination (3000K) for various outdoor and indoor spaces such as porches, patios, garages, backyards, and hallways. Featuring a robust aluminum frame and double acrylic panel cover, this light is built for longevity and weather resistance.



Image: Two ledmo 15W Outdoor Wall Lights installed on a textured wall, emitting a warm glow.

2. SAFETY INFORMATION

- Always turn off the power at the circuit breaker before installation, maintenance, or cleaning.
- Consult a qualified electrician if you are not familiar with electrical wiring.
- Ensure all connections are secure and properly insulated.
- Do not exceed the specified voltage or wattage.
- This fixture is rated IP65 for outdoor use, indicating protection against dust and water jets. However, avoid submerging the fixture in water.
- Keep children away from the installation area.

3. PACKAGE CONTENTS

Verify that all components are present before beginning installation:

- ledmo Outdoor Wall Light Fixture (x2 for 2-pack)
- Mounting Bracket
- Screws and Wall Anchors
- Instruction Manual



Image: Diagram showing the dimensions of the ledmo outdoor wall light, its internal structure with a double-layered lampshade, and included mounting hardware (screws and wall anchors).

4. SPECIFICATIONS

Feature	Description
Brand	ledmo
Model	15W-2Packs-3000K
Power	15W per fixture
Lumen Output	1800Lm
Color Temperature	3000K (Warm White)
Material	Aluminum, Metal, Acrylic
Color	Black
Style	Modern, Simplicity
Light Fixture Form	Wall Sconce
Waterproof Rating	IP65

5. INSTALLATION

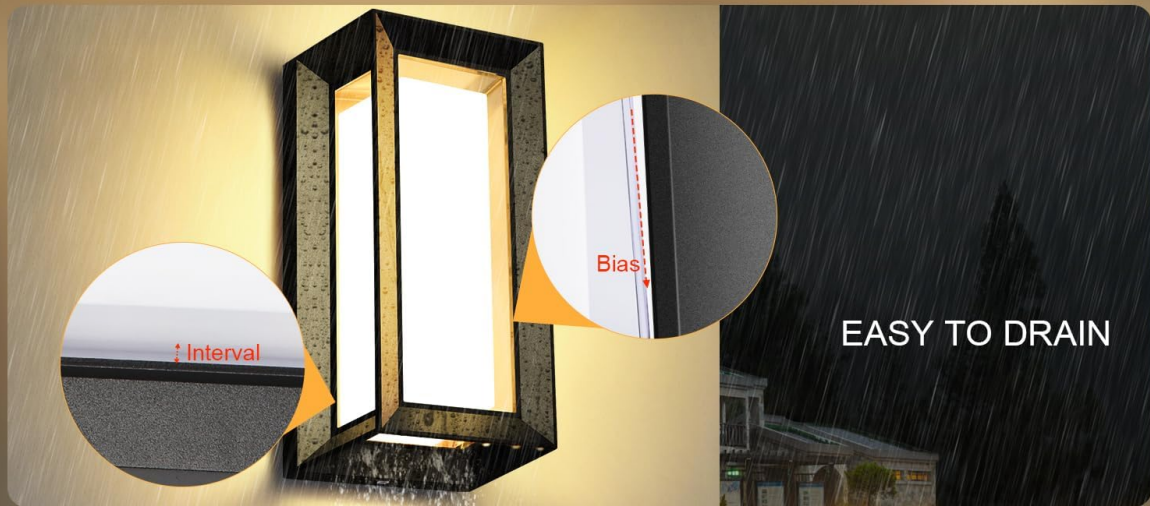
Follow these steps for proper installation:

- 1. Prepare for Installation:** Turn off the power at the main circuit breaker. Ensure the mounting surface is clean and stable.
- 2. Disassemble the Fixture:** Carefully remove the top and bottom screws from the fixture to separate the main body from the mounting plate.
- 3. Mount the Bracket:** Using the provided screws and wall anchors, securely attach the mounting bracket to the desired location on the wall. Ensure the bracket is level.
- 4. Wire the Fixture:** Connect the household electrical wires to the fixture's wires according to local electrical codes (typically black to black, white to white, and ground to ground). Use wire nuts to secure connections.
- 5. Attach the Fixture Body:** Align the fixture body with the mounted bracket and secure it using the screws removed in step 2. Ensure a tight fit to maintain the IP65 waterproof rating.
- 6. Test the Light:** Restore power at the circuit breaker and test the light fixture.



Image: A single ledmo outdoor wall light mounted on a white wall, showcasing its modern design.

TILT FRAME & GAPS TO DRAIN WATER



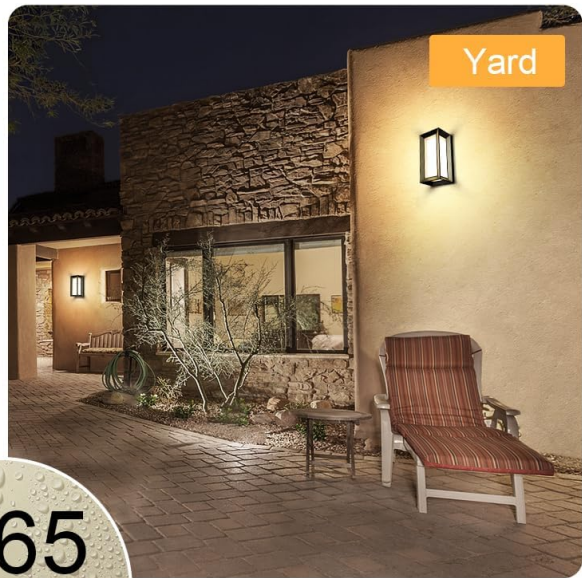
STANDING WATER CAUSES LIGHT MALFUNCTION & INSECT BREEDING



Image: An outdoor wall light securely mounted on a textured wall, demonstrating stable installation.

6. OPERATING INSTRUCTIONS

The ledmo Outdoor Wall Light operates via a standard wall switch. Simply toggle the switch to turn the light on or off. This fixture provides a consistent 3000K warm white light output.



IP65
waterproof level
suitable for outdoor
and indoor use

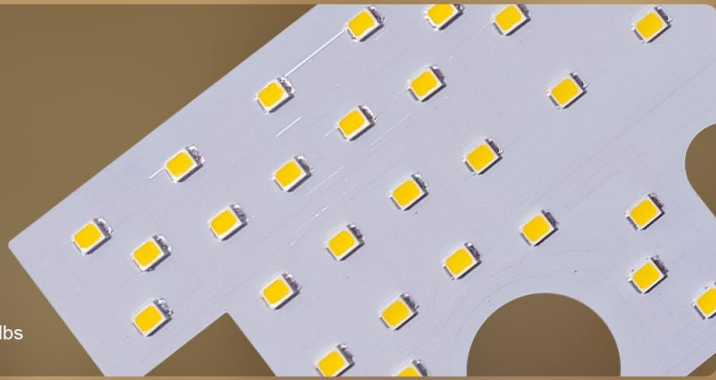


Image: An outdoor wall light illuminating a patio area at night with a soft, warm glow, next to a light switch on a wall.

7. MAINTENANCE

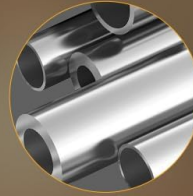
To ensure optimal performance and appearance of your ledmo Outdoor Wall Light, follow these maintenance guidelines:

- **Cleaning:** Periodically wipe the fixture with a soft, damp cloth to remove dust and dirt. Avoid abrasive cleaners or solvents that could damage the finish or acrylic panels.
- **Inspection:** Regularly check for any loose connections or signs of wear. Ensure the fixture remains securely mounted.
- **Water Drainage:** The fixture is designed with a tilted frame and gaps to facilitate water drainage, preventing accumulation and potential malfunction.



1. LED LAMP BEAD

Energy - saving and no need to replace bulbs



2. ALUMINUM MATERIAL

Corrosion - resistant and durable



5.14 ib

3. LIGHTWEIGHT PRODUCT

Easy to install and wall - friendly



Image: Diagram illustrating the tilted frame design of the outdoor wall light, showing how water drains effectively to prevent ponding and potential malfunction.

8. TROUBLESHOOTING

Problem	Possible Cause	Solution
Light does not turn on	No power, loose wiring, faulty switch	Check circuit breaker, verify wiring connections, test switch functionality.
Light flickers	Loose wiring, unstable power supply	Ensure all wiring connections are secure. Consult an electrician if power supply is unstable.
Water inside fixture	Improper installation, damaged seal	Ensure fixture is properly sealed and all screws are tightened. Inspect for any damage to the acrylic panels or frame.

9. WARRANTY AND SUPPORT

ledmo aims to provide a good shopping experience for every customer. If you have any pre-sales or post-sales questions about the product, please communicate with us. We offer 7*24 hours of uninterrupted customer service to assist you.