

Manuals+

[Q & A](#) | [Deep Search](#) | [Upload](#)

manuals.plus /

- › [Cooler Master](#) /
- › [Cooler Master HAF 700 PC Case User Manual](#)

Cooler Master HAF 700

Cooler Master HAF 700 PC Case User Manual

Model: HAF 700 (H700-IGNN-S00)

1. INTRODUCTION

This manual provides comprehensive instructions for the assembly, operation, and maintenance of your Cooler Master HAF 700 Full-Tower PC Case. The HAF 700 is engineered for high-volume airflow and extensive hardware compatibility, featuring a breathable mesh front panel, ARGB fans, a tempered glass side panel, and a tool-free design for ease of use. Please read this manual thoroughly before beginning installation to ensure proper setup and to maximize the performance and longevity of your system.

2. PACKAGE CONTENTS

Verify that all components are present in the package:

- Cooler Master HAF 700 PC Case
- 2 x 200mm SickleFlow ARGB PWM Fans (pre-installed front)
- 3 x 120mm Fans (pre-installed rear/top)
- ARGB Controller Hub
- Accessory Box (screws, zip ties, standoffs, etc.)
- User Manual (this document)



Image: Front-left view of the Cooler Master HAF 700 PC case, showcasing its large size, tempered glass side panel, and illuminated ARGB fans.

3. SETUP AND COMPONENT INSTALLATION

Before installing components, ensure the case is placed on a stable, flat surface. The HAF 700 features a tool-free design for many components, simplifying the assembly process.

3.1. Accessing the Interior

The top and side panels are fully detachable for easy access. Gently pull the panels to release them from their mounting points.



Image: Interior view of the HAF 700 case, showing the spacious layout for motherboard, GPU, and cooling components.

3.2. Motherboard Installation

The HAF 700 supports ITX, micro ATX, ATX, SSI CEB, and E-ATX motherboards. Install the necessary standoffs for your motherboard size, then secure the motherboard with screws.

3.3. Graphics Card (GPU) Installation

The case supports graphics cards up to 490mm in length. Utilize the tool-free vertical GPU mounting option if desired, or install horizontally into the PCIe slots.

3.4. Power Supply Unit (PSU) Installation

Install the PSU (up to 200mm) into the dedicated compartment at the bottom of the case. The PSU mount is tool-free for convenience.

3.5. Storage Drive Installation

The HAF 700 includes a tool-free HDD/SSD cage. Install your 2.5" or 3.5" drives into the bays. Additional mounting points are available behind the motherboard tray.



Image: The tool-free HDD/SSD cage, designed for easy installation and removal of storage drives.

3.6. Cooling System Installation (Fans & Radiators)

The case supports extensive cooling configurations:

- Up to fifteen 120mm fans.
- Radiators up to 480mm (side), 420mm (top & bottom), and 240mm (rear).

A fully modular rotatable bracket is included for custom setups, particularly for radiators.



Image: The rotatable radiator bracket, shown with three fans installed, demonstrating its flexibility for custom cooling solutions.

3.7. Cable Management

Utilize the multi-chamber layout and integrated cable routing channels behind the motherboard tray for clean cable management. Secure cables with zip ties (included in accessory box).



Image: Rear interior view of the HAF 700 case, highlighting the ample space and routing options for effective cable management.

4. OPERATING THE CASE FEATURES

4.1. Front I/O Panel

The front I/O panel provides convenient access to various ports:

- 4 x USB 3.2 Gen 1 ports
- 2 x Audio Jacks (Headphone/Microphone)
- 1 x Reset/ARGB Button
- 1 x USB 3.2 Gen 2 Type-C port

Connect your peripherals and external devices to these ports.

4.2. ARGB Lighting Control

The included ARGB controller hub allows for synchronized system lighting. You can control the lighting effects via the dedicated Reset/ARGB button on the front I/O panel or through Cooler Master's MasterPlus+ software (downloadable from the official Cooler Master website).

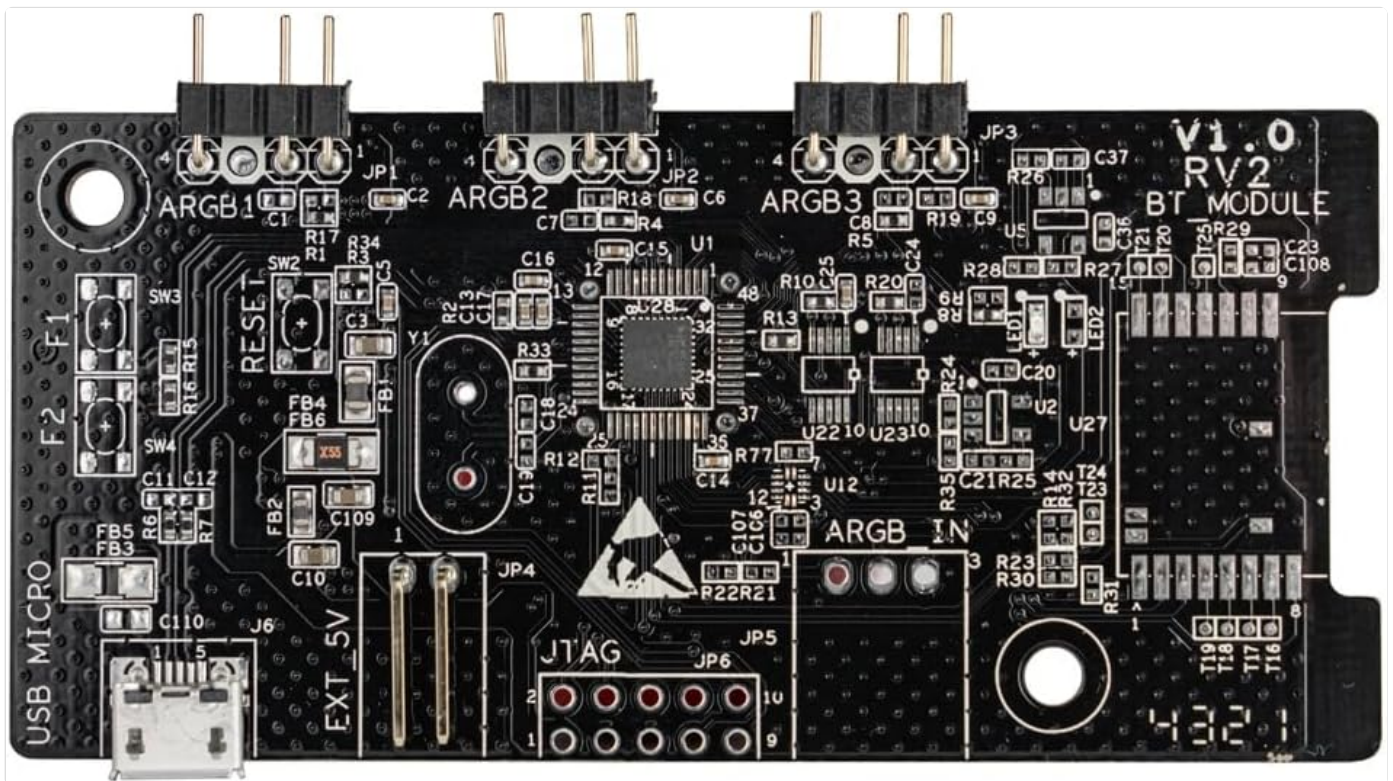


Image: The Cooler Master ARGB Controller Hub, which manages the synchronized lighting effects of the case's ARGB components.

5. MAINTENANCE

Regular maintenance ensures optimal performance and longevity of your PC case.

5.1. Dust Filter Cleaning

The front air intake panel features a mesh dust filter. Periodically remove and clean this filter to maintain maximum airflow and prevent dust buildup inside the system. Dust filters are also located on the top and bottom of the case.



Image: Top view of the HAF 700 case, illustrating the removable mesh dust filter for easy cleaning and maintenance of airflow.

5.2. General Cleaning

Use a soft, dry cloth to wipe down the exterior surfaces of the case. For the tempered glass panel, use a glass cleaner applied to a cloth (not directly to the glass) to avoid streaks. Avoid abrasive cleaners or solvents.

6. TROUBLESHOOTING

This section addresses common issues you might encounter.

6.1. No Power / System Not Booting

- Ensure the PSU is properly connected to the wall outlet and the power switch on the PSU is in the 'ON' position.

- Verify all internal power cables (24-pin ATX, CPU, GPU, etc.) are securely connected to the motherboard and components.
- Check front panel header connections (Power SW, Reset SW) to the motherboard. Refer to your motherboard manual for correct pinouts.

6.2. Fans Not Spinning / ARGB Not Lighting Up

- Confirm that all fan cables are correctly connected to the motherboard fan headers or the ARGB controller.
- Ensure the ARGB controller is receiving power (usually via SATA power connector).
- If using MasterPlus+ software, ensure it is installed and updated.
- Press the Reset/ARGB button on the front I/O panel to cycle through lighting modes or reset the ARGB controller.

6.3. USB Ports Not Functioning

- Check that the USB 3.0 and USB Type-C headers from the front I/O panel are securely connected to the corresponding headers on your motherboard.
- Ensure motherboard drivers are installed and up to date.

7. SPECIFICATIONS

Feature	Detail
Model Name	HAF 700
Model Number	H700-IGNN-S00
Case Type	Full Tower
Color	Titanium Grey
Material	Metal
Dimensions (L x W x H)	30.71 x 28.74 x 15.75 inches (780 x 730 x 400 mm)
Weight	43.8 pounds (19.87 kg)
Motherboard Support	ITX, Micro ATX, ATX, SSI CEB, E-ATX
Expansion Slots	8
CPU Cooler Clearance	Up to 166mm
GPU Clearance	Up to 490mm
PSU Clearance	Up to 200mm
Pre-installed Fans	Front: 2 x 200mm ARGB PWM SickleFlow; Rear: 1 x 120mm; Top: 2 x 120mm
Fan Support	Up to fifteen 120mm fans (various configurations)
Radiator Support	Side: Up to 480mm; Top: Up to 420mm; Bottom: Up to 420mm; Rear: Up to 240mm

Feature	Detail
Front I/O Ports	4 x USB 3.2 Gen 1, 2 x Audio Jacks, 1 x Reset/ARGB Button, 1 x USB 3.2 Gen 2 Type-C

8. WARRANTY AND SUPPORT

Cooler Master products come with a limited warranty. For detailed warranty information, please refer to the official Cooler Master website or the warranty card included with your product.

For technical support, troubleshooting assistance, or to inquire about replacement parts, please visit the Cooler Master support portal:

<https://www.coolermaster.com/support/>

You may also contact Cooler Master customer service directly through the contact information provided on their website.

© 2023 Cooler Master Technology Inc. All rights reserved.
Product specifications are subject to change without notice.