

GOYOJO CS-BJC-JP

GOYOJO Veterinary Portable Ultrasound Scanner

Model: CS-BJC-JP

[Introduction](#) [Safety Information](#) [Package Contents](#) [Product](#)
[Overview](#) [Setup](#) [Operation](#) [Maintenance](#) [Troubleshooting](#) [Specifications](#) [Support](#)

1. INTRODUCTION

The GOYOJO Veterinary Portable Ultrasound Scanner (Model CS-BJC-JP) is a digital B-ultrasound machine designed for veterinary use. It features a 3.5 MHz mechanical probe, making it suitable for pregnancy detection and general health assessment in various farm animals and pets, including horses, goats, sheep, pigs, camels, cows, dogs, and cats. This device assists in confirming pregnancy, monitoring follicular development, and detecting basic diseases. It includes measurement functions for circumference, area, and gestational age. The scanner is equipped with built-in memory for storing up to 128 images and an 8GB storage card for cineloop and image processing, allowing for saving and movie playback functions.

Vet Veterinary use Portable B-Ultra Sound Scanner Machine

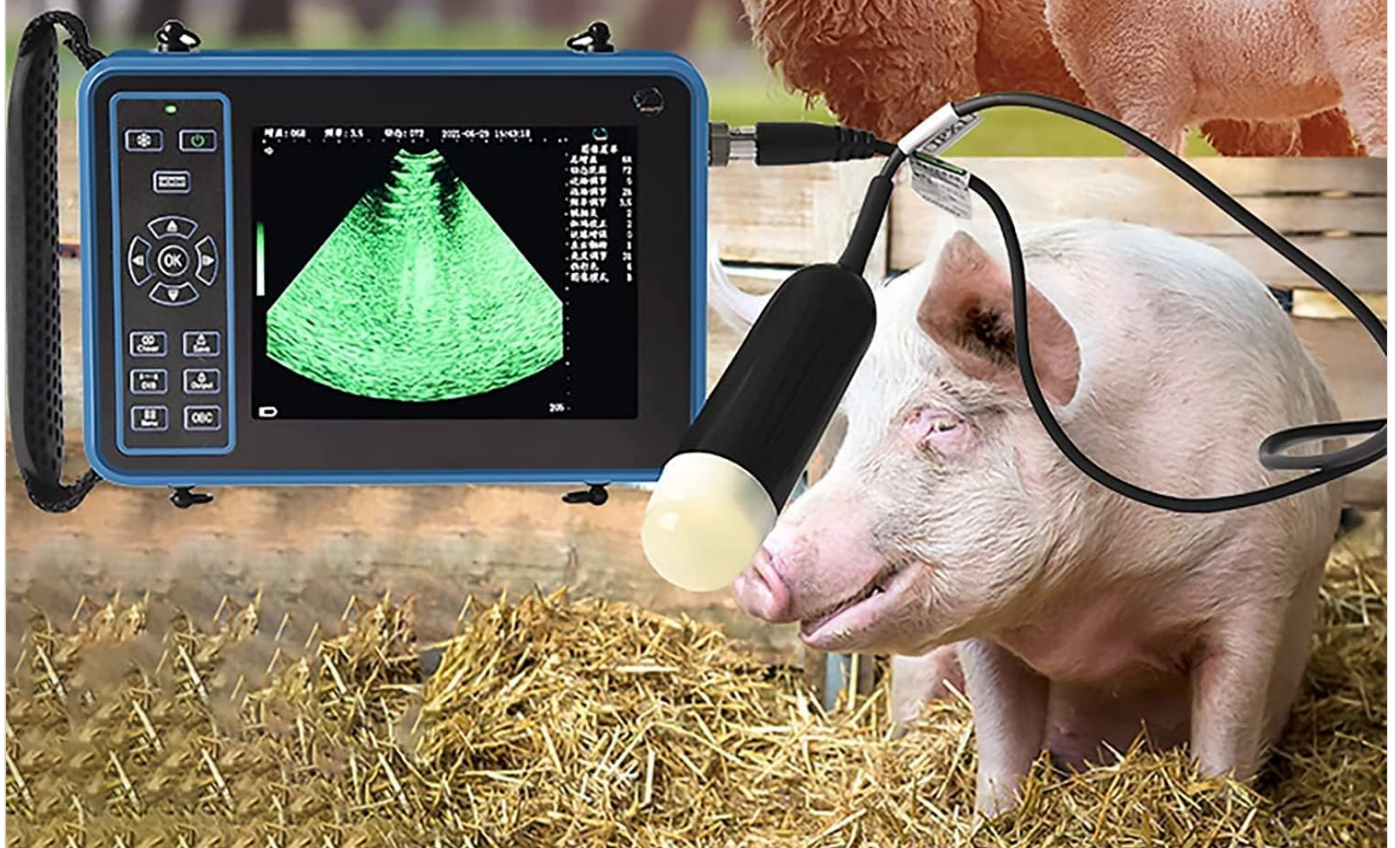


Image: The GOYOJO Veterinary Portable Ultrasound Scanner with its probe, positioned near a pig and sheep, illustrating its application in veterinary practice.

2. SAFETY INFORMATION

Please read all safety instructions before operating the device to ensure safe and proper use. Failure to follow these instructions may result in injury or damage to the device.

- **Professional Use:** This device is intended for use by individuals with experience in veterinary ultrasound imaging. Proper training and understanding of ultrasound interpretation are essential for accurate results.
- **Probe Handling:** Handle the probe with care. Avoid dropping or subjecting it to strong impacts.
- **Power Supply:** Use only the provided charger and power adapter. Ensure the power source matches the device's requirements.
- **Cleaning:** Refer to the maintenance section for proper cleaning procedures. Do not immerse the main unit in water.
- **Environmental Conditions:** Operate the device within specified temperature and humidity ranges. Avoid extreme temperatures, direct sunlight, and dusty environments.

- **Coupling Gel:** Always use an appropriate coupling agent (ultrasound gel, soybean oil, castor oil, olive oil, or kitchen detergent) on the animal's skin to ensure proper contact and image quality.
- **Disposal:** Dispose of the device and its components, especially the battery, according to local regulations.

3. PACKAGE CONTENTS

Verify that all items listed below are present in your package. If any items are missing or damaged, contact customer support immediately.

- Main Ultrasound Scanner Unit
- 3.5 MHz Mechanical Probe
- Charger
- Straps (for portability)
- User Manual
- Storage Card (8GB)
- Protective Outer Box
- Certification (if applicable)



Image: Visual representation of the included package contents, including the main unit, probe, charger, straps, user manual, and protective case.

4. PRODUCT OVERVIEW

4.1 Main Unit



Image: The main unit of the ultrasound scanner, displaying its screen, control buttons, and the attached 3.5 MHz mechanical probe.

The main unit features a display screen and a control panel for navigating menus and adjusting settings. It is designed for portability with an attached strap.

4.2 Control Panel

The control panel includes buttons for power, menu navigation (up, down, left, right, OK), image freezing, saving, clearing, display options (DIS), and output. Familiarize yourself with these controls for efficient operation.

4.3 3.5 MHz Mechanical Probe

Waterproof Mechanical Probe

3.5HZ waterproof mechanical fan-sweep probe, washable



Image: A detailed view of the waterproof 3.5 MHz mechanical fan-sweep probe, highlighting its design for veterinary use and ease of cleaning.

The included 3.5 MHz mechanical probe is designed for large animals and is waterproof, allowing for easy cleaning. It connects securely to the main unit.

5. SETUP

1. **Charge the Device:** Before first use, fully charge the ultrasound scanner using the provided charger. The device uses a Lithium Polymer battery.
2. **Attach the Probe:** Connect the 3.5 MHz mechanical probe securely to the designated port on the main unit.
3. **Insert Storage Card:** Ensure the 8GB storage card is properly inserted into its slot for image and video storage.
4. **Prepare the Animal:** For optimal imaging, it is recommended to shave the area of the animal's skin where the ultrasound will be performed.
5. **Apply Coupling Agent:** Apply a generous amount of ultrasound gel or an alternative coupling agent (such as soybean oil, castor oil, olive oil, or kitchen detergent) to the prepared skin area. This is crucial for clear image

transmission.

6. OPERATING INSTRUCTIONS

6.1 Powering On/Off

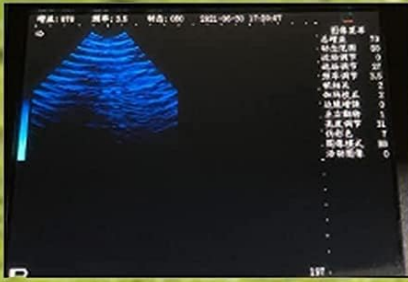
- To power on, press and hold the power button until the screen illuminates.
- To power off, press and hold the power button until the device shuts down.

6.2 Basic Scanning Procedure

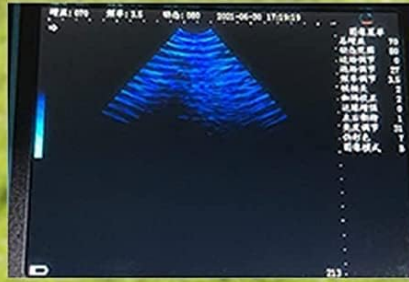
1. Ensure the probe is connected and coupling agent is applied to the animal's skin.
2. Gently place the probe on the prepared area, ensuring full contact with the skin.
3. Observe the real-time image on the screen. Adjust the probe's position and angle to obtain the clearest image.
4. Use the control panel buttons to navigate menus and adjust image settings such as gain, dynamic range, and frequency.

6.3 Image Modes and Pseudo-Color

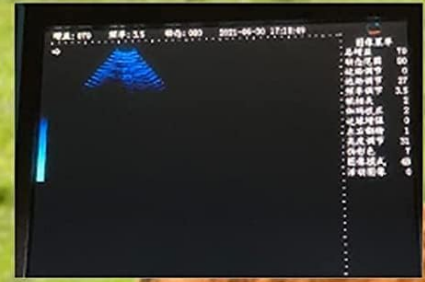
Image modes



BB Mode



B Mode



4B Mode

Pseudo-Color

Free conversion of multiple colors for easy viewing

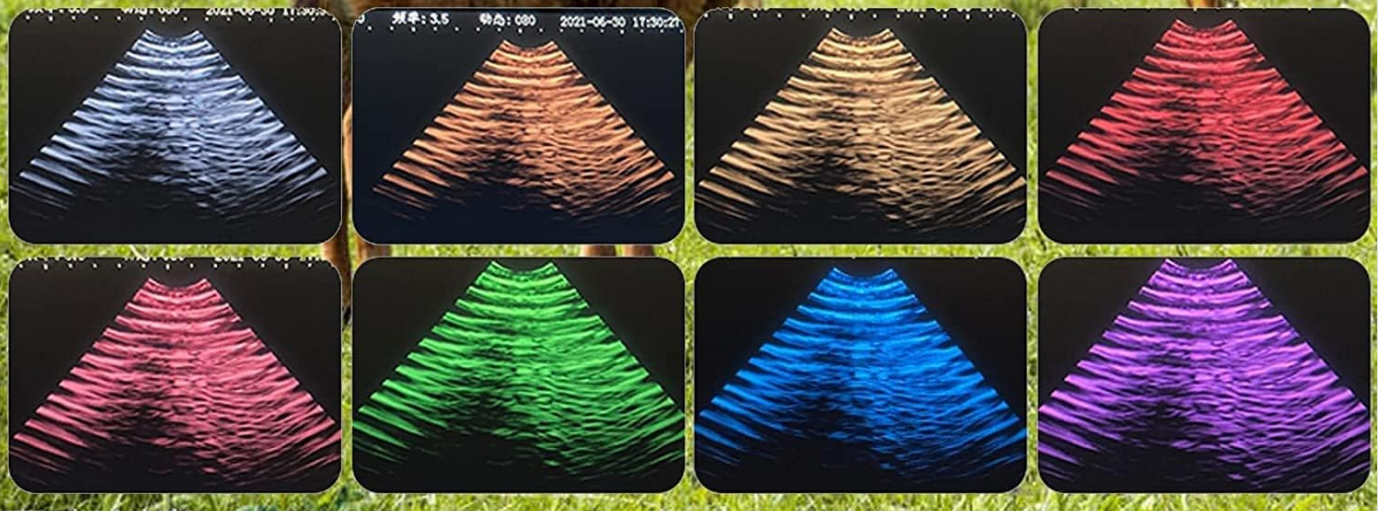


Image: Examples of different image display modes (BB, B, 4B) and a selection of pseudo-color options available on the scanner for enhanced visualization.

The scanner supports various image modes (e.g., B, BB, 4B, M) for different diagnostic needs. It also offers 8 pseudo-color panels for free conversion, which can enhance the visibility of structures and improve readability.

6.4 Measurement Functions

The device includes functions for measuring circumference, area, and gestational age. Refer to the on-screen menu for specific instructions on activating and using these measurement tools.

Backfat measurement for quick readings

Backfat measurement by key, fast reading results

Easy to account for the cost of growth



Image: An ultrasound display demonstrating the backfat measurement feature, providing quick readings for assessment.

6.5 Saving and Playback

The scanner has built-in memory for up to 128 images and an 8GB storage card for cineloop (short video clips). Use the 'Save' button to store images or cineloops. Access saved data through the menu for review and playback.

6.6 Application Examples



Image: A person using the ultrasound scanner on a pig, demonstrating the practical application of the device in livestock.



Image: A veterinary professional conducting an ultrasound examination on a dog, showcasing its use for smaller pets.



Image: A veterinarian utilizing the ultrasound scanner on cattle, illustrating its effectiveness for large farm animals.

7. MAINTENANCE

- **Cleaning the Probe:** After each use, clean the waterproof probe thoroughly with a mild disinfectant solution and a soft cloth. Ensure no residue remains.
- **Cleaning the Main Unit:** Wipe the main unit's screen and casing with a soft, dry, or slightly damp cloth. Avoid using harsh chemicals or abrasive materials. Do not allow liquids to enter the device.
- **Storage:** Store the device in its protective case in a cool, dry place, away from direct sunlight and extreme temperatures.

- **Battery Care:** To prolong battery life, avoid fully discharging the battery frequently. Charge the device regularly, even if not in use for extended periods.
- **Software Updates:** Check the manufacturer's website or contact support for any available software updates.

8. TROUBLESHOOTING

Problem	Possible Cause	Solution
No image on screen / Fuzzy screen	Insufficient coupling agent. Probe not making full contact. Incorrect settings (gain, frequency). Probe malfunction.	Apply more coupling agent. Ensure firm and even contact with skin. Adjust gain and frequency settings. Restart the device. If problem persists, contact support.
Device does not power on	Battery is discharged. Power button not pressed correctly.	Connect to charger and allow sufficient charging time. Press and hold the power button firmly.
Buttons unresponsive	Temporary software glitch. Physical damage to buttons.	Restart the device. Ensure buttons are pressed firmly. If problem persists, contact support.
Cannot save images/videos	Storage card full or not inserted correctly. Internal memory full.	Check storage card insertion. Delete old files or replace storage card.

9. SPECIFICATIONS

Feature	Detail
Brand	GOYOJO
Model Number	CS-BJC-JP
ASIN	B0B2WLPQWJ
Probe Type	3.5 MHz Mechanical Probe (Fan-sweep, Waterproof)
Display	5.6 inch LCD Screen
Image Storage	Up to 128 images (built-in memory), 8GB storage card for cineloop
Measurement Functions	Circumference, Area, Gestational Age, Backfat
Battery	1 Lithium Polymer battery (included)
Item Weight	8.27 pounds
Package Dimensions	16.57 x 15.94 x 6.69 inches
First Available Date	June 1, 2022

10. WARRANTY AND SUPPORT

GOYOJO is committed to providing exceptional after-sales support. If you encounter any issues with your product, please contact our customer service team directly. We are dedicated to troubleshooting problems promptly and ensuring your complete satisfaction.

For further assistance, you may refer to the official User Guide PDF:

[Download Official User Guide \(PDF\)](#)

You can also visit the [GOYOJO Store on Amazon](#) for more product information and contact options.

