

Anpviz IPC-D363WD-SA

Anpviz 6MP PoE Turret IP Camera (Model: IPC-D363WD-SA) Instruction Manual

Comprehensive Guide for Setup, Operation, and Maintenance

1. INTRODUCTION

This manual provides detailed instructions for the installation, configuration, and operation of your Anpviz 6MP PoE Turret IP Camera. Please read this manual thoroughly before using the product to ensure proper functionality and safety.



Figure 1: Anpviz 6MP PoE Turret IP Camera

2. SAFETY INFORMATION

- Ensure all electrical connections are secure and comply with local electrical codes.
- Do not expose the camera to extreme temperatures or humidity beyond its operating range.
- Use only approved power adapters or PoE switches that meet the camera's power requirements.
- Avoid direct exposure of the camera lens to strong light sources, as this may damage the sensor.
- Keep the camera and its accessories out of reach of children.

3. PACKAGE CONTENTS

Verify that all items listed below are included in your package:

- 1 x Anpviz 6MP Turret PoE Camera
- 1 x User Manual
- 1 x Waterproof Lid
- Mounting Screws and Wall Plugs

4. PRODUCT OVERVIEW

The Anpviz 6MP PoE Turret IP Camera is designed for outdoor surveillance, offering high-resolution video and advanced features. Key components include:

- **Metal Body:** Durable construction for outdoor use.
- **Lens:** 2.8mm wide-angle lens for a 110° field of view.
- **Microphone & Speaker:** Built-in for two-way audio communication.
- **LEDs:** Dual lights for Smart Color Night Vision and deterrence.
- **MicroSD Card Slot:** Supports up to 256GB for local storage.
- **PoE Port:** For power and data transmission via a single Ethernet cable.

Product Details

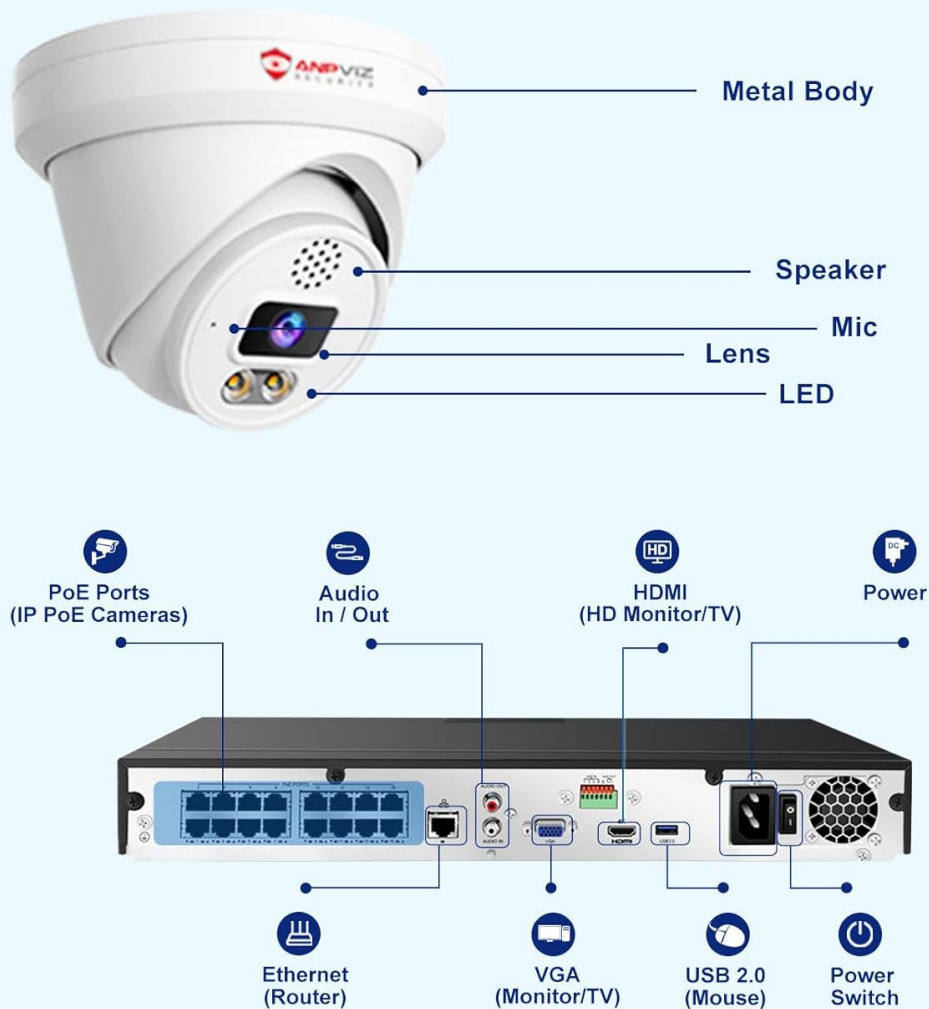


Figure 2: Key components of the camera

5. SETUP INSTRUCTIONS

5.1 Physical Installation

The camera is designed for ceiling or wall mounting. Ensure the mounting surface is strong enough to support the camera's weight.

1. **Disassemble the Trim Ring:** Rotate the trim ring counter-clockwise to remove it from the camera body.
2. **Drill Holes:** Use the provided mounting template or the camera base to mark and drill pilot holes for the screws. Insert wall plugs if necessary.
3. **Install the Camera:** Secure the camera base to the mounting surface using the supplied screws.
4. **Adjust Camera Angle:** Once mounted, adjust the camera's viewing angle as desired.

Waterproof Lid Installation

To ensure weather resistance for the Ethernet connection, install the waterproof lid:

1. Place the waterproof ring on the camera's network port.
2. Pass the Ethernet cable's crystal head through the waterproof component.
3. Plug the Ethernet cable into the camera's network port and tighten the waterproof lid securely.

Your browser does not support the video tag.

Video 1: How to Install Waterproof Lid for Anpviz PoE Camera. This video demonstrates the steps for installing the waterproof lid on the camera's Ethernet port to protect against environmental elements.

5.2 Connection Options

The camera supports three connection methods:

- **1. Plug & Play with Anpviz NVR:** Connect the camera directly to a compatible Anpviz U-Series Network Video Recorder (NVR) using an Ethernet cable. The NVR will provide power and manage the video stream.
- **2. Connect to PoE Switch:** Connect the camera to a Power over Ethernet (PoE) switch using an Ethernet cable. The PoE switch will supply power and data.
- **3. Powered by Power Adapter (Not Included):** If not using PoE, connect the camera to a 12V DC power adapter (not included) and then to your network router via an Ethernet cable.

3 Connection Ways

1. Plug & Play with Anpviz NVR



2. Connect to PoE Switch



3. Powered by Power Adapter

(Not Included)



Figure 3: Diagram illustrating the three connection methods for the camera.

Your browser does not support the video tag.

Video 2: How to connect camera to PoE switch. This video demonstrates the process of connecting the camera to a PoE switch for power and data.

5.3 Mobile App Setup (VideoLink App)

To access and control your camera remotely, download and configure the VideoLink app:

1. **Download the App:** Search for "VideoLink" in your mobile app store (iOS/Android) and install it.
2. **Sign Up & Log In:** Create a new account or log in with existing credentials.
3. **Add Device:** In the app, select to add a new device. Choose the "Lan" option for wired cameras.
4. **Scan QR Code:** Scan the QR code located on the camera or in the camera's web interface (P2P page) to add the camera.
5. **Bind Device:** Follow the on-screen prompts to bind the device to your account and assign a name.

Your browser does not support the video tag.

Video 3: How to add PoE IP Camera to VideoLink APP. This video guides you through the process of adding your camera to the VideoLink mobile application.

5.4 PC Software Setup (SearchTools)

For advanced configuration and management on a PC, use the SearchTools software:

1. **Download SearchTools:** Visit the Anpviz Security website (anpvizsecurity.com), navigate to the Support Center, and download the appropriate "SearchTools" for your operating system (Windows/Mac).
2. **Install and Launch:** Install the software and launch it.
3. **Find Camera:** The software will automatically scan your network for connected Anpviz cameras.
4. **Access Web Interface:** Select your camera from the list to access its web interface for detailed settings.

Your browser does not support the video tag.

Video 4: How to download SearchTools. This video demonstrates how to download the SearchTools software from the Anpviz website.

Your browser does not support the video tag.

Video 5: How to download and use SearchTools. This video provides instructions on downloading and utilizing the SearchTools software to manage your camera.

6. OPERATING INSTRUCTIONS

6.1 Live View

Once the camera is set up and connected, you can view the live feed through the VideoLink app or the camera's web interface on your PC.



Software APP for PC & Mobile Phone

 Windows  IOS/Mac  Android

Support Software **Support Browser**

APP: VideoLink PC: LMS

Figure 4: Remote access via PC and mobile phone applications.

6.2 Two-Way Audio

The camera features a built-in microphone and speaker, enabling two-way communication. This allows you to listen to audio from the camera's location and speak through the camera using the mobile app or PC software. Note: If connecting to an NVR, the speaker function is compatible only with Anpviz U-Series NVRs.

Two Way Audio

Only Works With Anpviz U-Series NVR



Figure 5: Two-way audio functionality for communication.

6.3 Smart Color Night Vision

The camera offers advanced night vision capabilities with three modes:

- **IR Mode:** Standard black and white infrared night vision.
- **White Light Mode:** Provides 24-hour full-color night vision using the camera's white LEDs.
- **Smart Mode:** Default setting. Infrared light is on by default at night. When a person or vehicle is detected, the white lights activate, and the video switches to full-color. Once the person or vehicle leaves the detection area, the white lights turn off, and the camera returns to IR night vision. This mode also includes an automatic beep to deter intruders.

Smart Color Night Vision

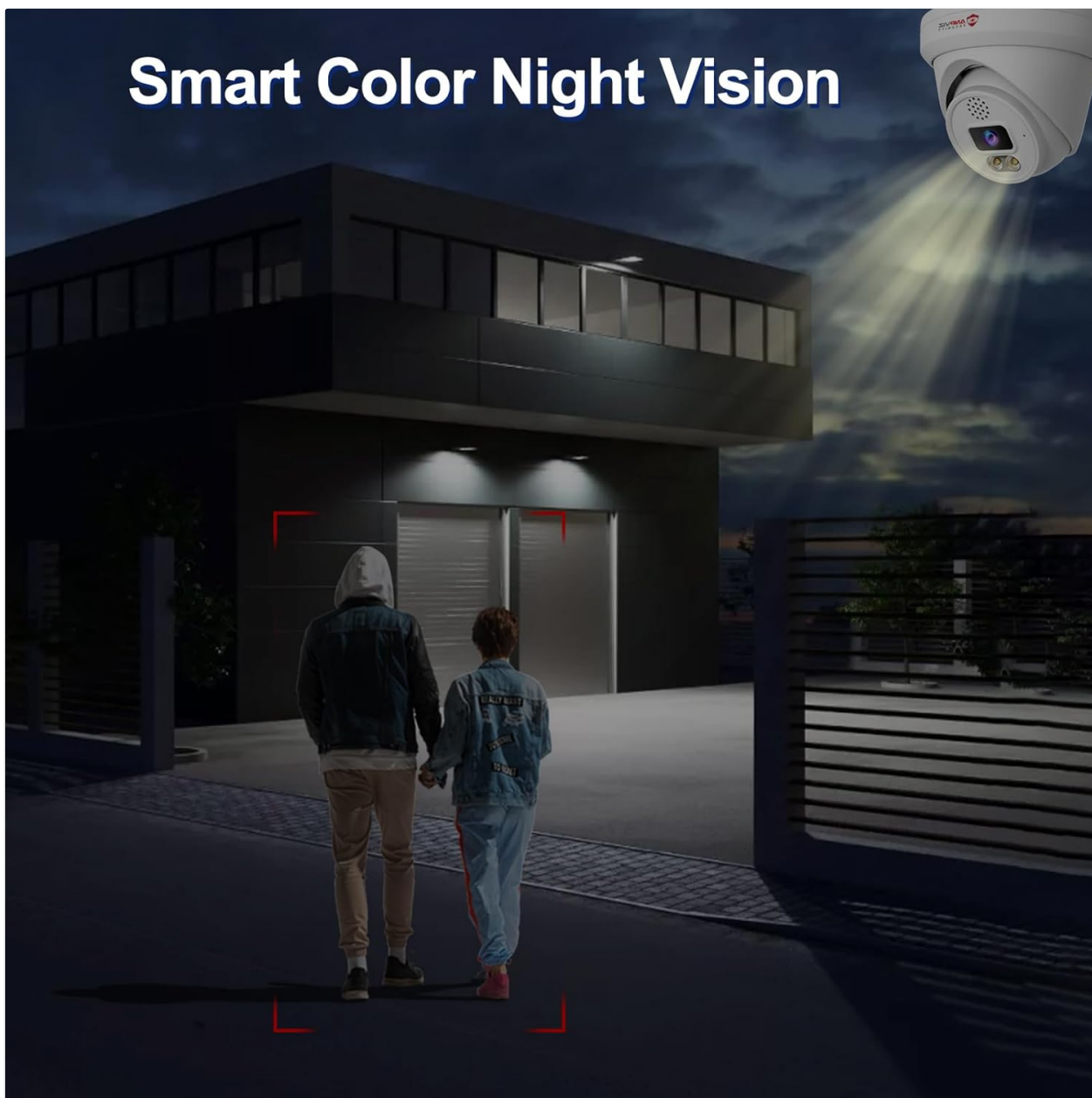


Figure 6: Smart Color Night Vision in action, illuminating a dark area upon detection.



Smart Dual Light Color Night Vision



Figure 7: Diagram explaining the Smart Dual Light Color Night Vision modes.

Your browser does not support the video tag.

Video 6: Motion Trigger Full-Color Night Vision. This video demonstrates how the camera's night vision switches to full-color upon motion detection.

6.4 Human/Vehicle Detection & Alarm Notifications

The camera utilizes AI to differentiate between human and vehicle shapes, reducing false alarms. You can configure specific detection types for alerts.

- **Minimize False Alerts:** The AI detection helps to ignore animals or shadows.
- **Customizable Alerts:** Specify whether to receive alerts for human, vehicle, or both.
- **Instant Notifications:** Receive push notifications on your mobile device when an event is detected.

Human & Vehicle Detection

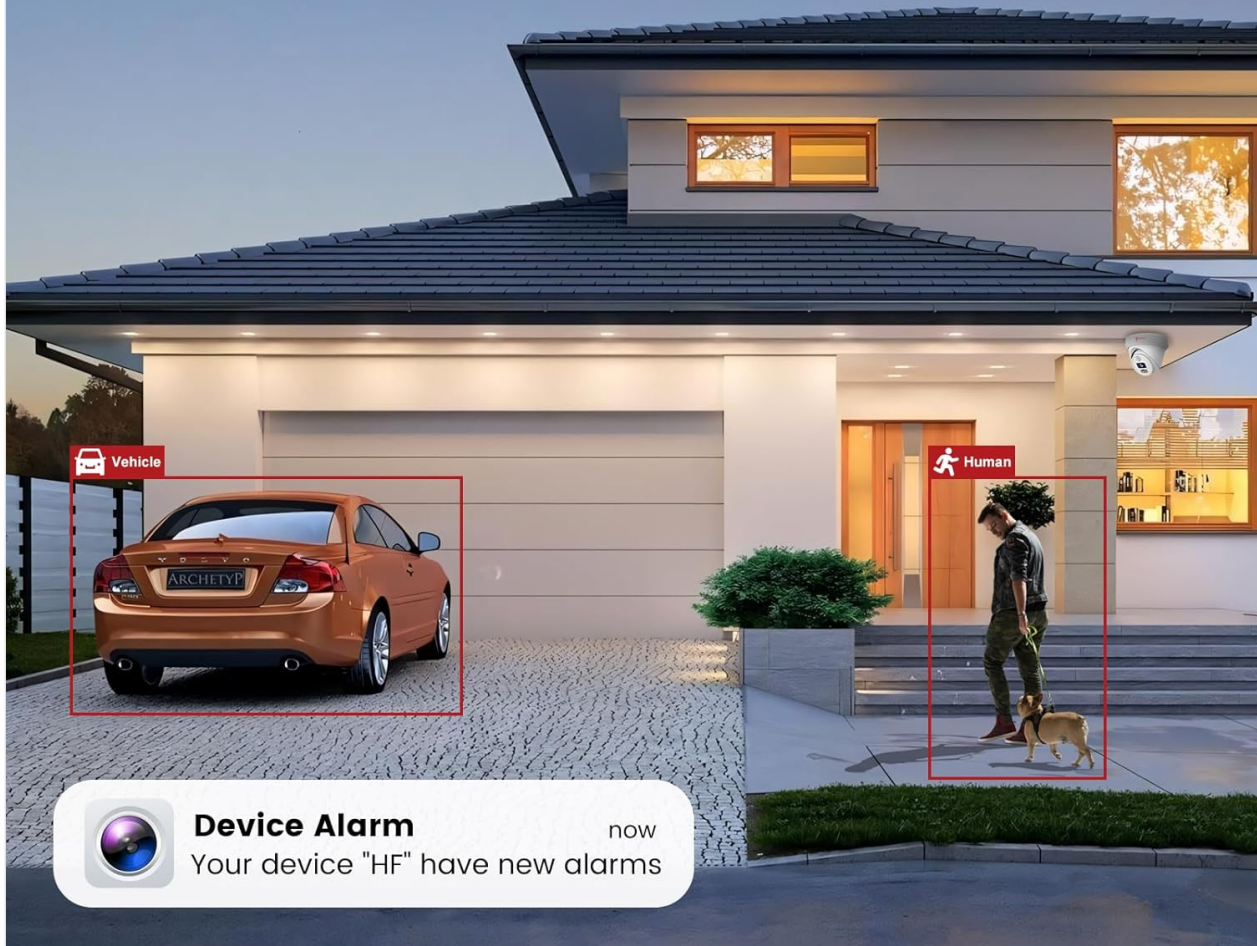


Figure 8: Human and vehicle detection capabilities with device alarm notifications.

Your browser does not support the video tag.

Video 7: Vehicle and person detection. This video demonstrates the camera's ability to detect and differentiate between vehicles and people.

Alarm Notification Settings (VideoLink App)

To enable alarm notifications:

1. Access the camera settings within the VideoLink app.
2. Navigate to the "Alarm" section.
3. Enable "Human Detection" and "Motion Detection" as desired.
4. Ensure "Message Push" is enabled in the app's main settings to receive notifications.

- **Cleaning:** Regularly clean the camera lens with a soft, dry cloth to ensure clear image quality. Avoid abrasive cleaners.
- **Firmware Updates:** Check the Anpviz Security website periodically for firmware updates to ensure optimal performance and security.
- **Environmental Protection:** The camera has an IP67 rating, making it waterproof and dustproof. However, avoid direct high-pressure water jets.



Figure 9: The camera's IP67 waterproof rating ensures durability in various weather conditions.

8. TROUBLESHOOTING

- **No Power:** Ensure the PoE switch or power adapter is functioning correctly and connected securely. Check Ethernet cable integrity.
- **No Video Feed:** Verify network connectivity. Ensure the camera's IP address is correct and accessible. Check firewall settings.
- **Poor Image Quality:** Clean the camera lens. Adjust image settings (brightness, contrast) in the web

interface or app. Ensure sufficient lighting for night vision.

- **False Alarms:** Adjust the sensitivity of motion detection and human/vehicle detection settings in the app or web interface. Define specific detection zones to exclude irrelevant areas.
- **Two-Way Audio Issues:** Ensure microphone and speaker settings are enabled in the app/web interface. For NVR connections, confirm compatibility with Anpviz U-Series NVRs.

9. SPECIFICATIONS

Feature	Specification
Model Name	IPC-D363WD-SA
Video Capture Resolution	6 MP (3072x2048)
Frame Rate	20fps
Lens	2.8mm Fixed Lens
Viewing Angle	110 Degrees
Night Vision Range	100 Feet
Low Light Technology	Smart Color Night Vision
Audio	2-Way Audio (Built-in Mic & Speaker)
Detection	AI Human & Vehicle Detection
Storage	MicroSD Slot (Max 256 GB)
Connectivity	Ethernet (PoE)
Indoor/Outdoor Usage	Outdoor
International Protection Rating	IP67 (Waterproof)
Material	Metal
Power Source	Corded Electric (12V DC) / PoE
Dimensions (L x W x H)	5 x 5 x 4.9 inches
Item Weight	1.3 pounds

10. WARRANTY AND SUPPORT





Anpviz provides a **1-year warranty** for this product. Additionally, **lifetime technical support** is available to assist with any questions or issues you may encounter.

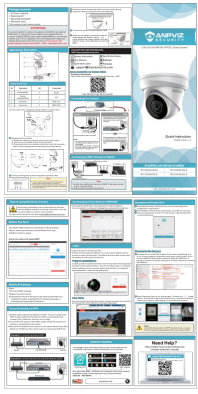
For support, please contact:

- **Amazon Seller:** Contact the seller directly through your Amazon order history.
- **Email Support:** support@anpvizsecurity.com (Monday-Friday, 9:00 AM - 6:00 PM)

© 2025 Anpviz Security. All rights reserved.

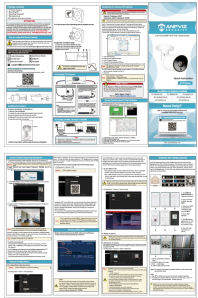
Related Documents - IPC-D363WD-SA

	<p>Anpviz NVR PoE Camera Setup Guide: Parameters and Configuration</p> <p>Learn how to set up Anpviz NVR PoE cameras, configure IP parameters, use the SADP tool, and adjust image settings for optimal performance. This guide covers essential steps for Anpviz U-Series IP cameras.</p>
	<p>Anpviz IPC-D360W-ST 6MP IP Camera Specifications and Features</p> <p>Detailed specifications and features for the Anpviz IPC-D360W-ST 6MP Human & Vehicle Detection IR & Colorvu Two-way Audio IP camera, including technical details on image sensor, resolution, video encoding, network capabilities, and operating conditions.</p>
	<p>Anpviz IP Dome Camera Quick Start Guide</p> <p>Quick start guide for Anpviz IP Dome Cameras, covering installation, connection, configuration, and mobile app usage.</p>
	<p>ANPVIZ H Series Network Camera Connection Operation Guide</p> <p>This guide provides detailed instructions for connecting and operating ANPVIZ H Series Network Cameras. It covers camera activation via PC or mobile app, and connection methods for various NVR systems, ensuring optimal setup and usage.</p>



[ANPVIZ IP Dome Camera Quick Start Guide](#)

This guide provides essential information for setting up and operating ANPVIZ IP Dome Cameras, covering package contents, connection methods, web and mobile access, and troubleshooting tips.



[Anpviz IP Camera Quick Installation Guide](#)

A concise guide for installing and setting up Anpviz IP cameras, covering connection, network configuration, and mobile access.