

PlusAcc Wall Mount Phone Holder

PlusAcc Wall Mount Phone and Tablet Holder User Manual

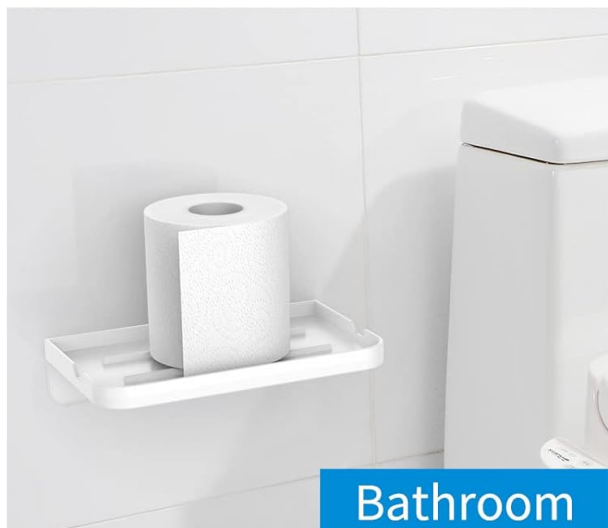
Model: Wall Mount Phone Holder

Brand: PlusAcc

1. INTRODUCTION

Thank you for choosing the PlusAcc Wall Mount Phone and Tablet Holder. This product is designed to provide a convenient and space-saving solution for holding your smartphones, tablets, and other small items. It features a charging hole slot for easy device charging and offers two installation methods: adhesive and screw mounting. Please read this manual carefully before installation and use to ensure proper function and longevity of the product.

Multipurpose Mini Wall Shelf



Bathroom



Kitchen



Bedroom



Living Room

Image: The PlusAcc Wall Mount Phone and Tablet Holder securely holding a tablet on a wall, demonstrating its primary function.

2. PACKAGE CONTENTS

Please verify that all components are present in your package:

- 1 x PlusAcc Wall Mount Phone and Tablet Holder
- Adhesive pads (pre-applied or separate)
- Mounting screws and wall anchors (for screw installation)
- User Manual



Image: A visual representation of the package contents, showing the wall mount, screws, and instruction manual.

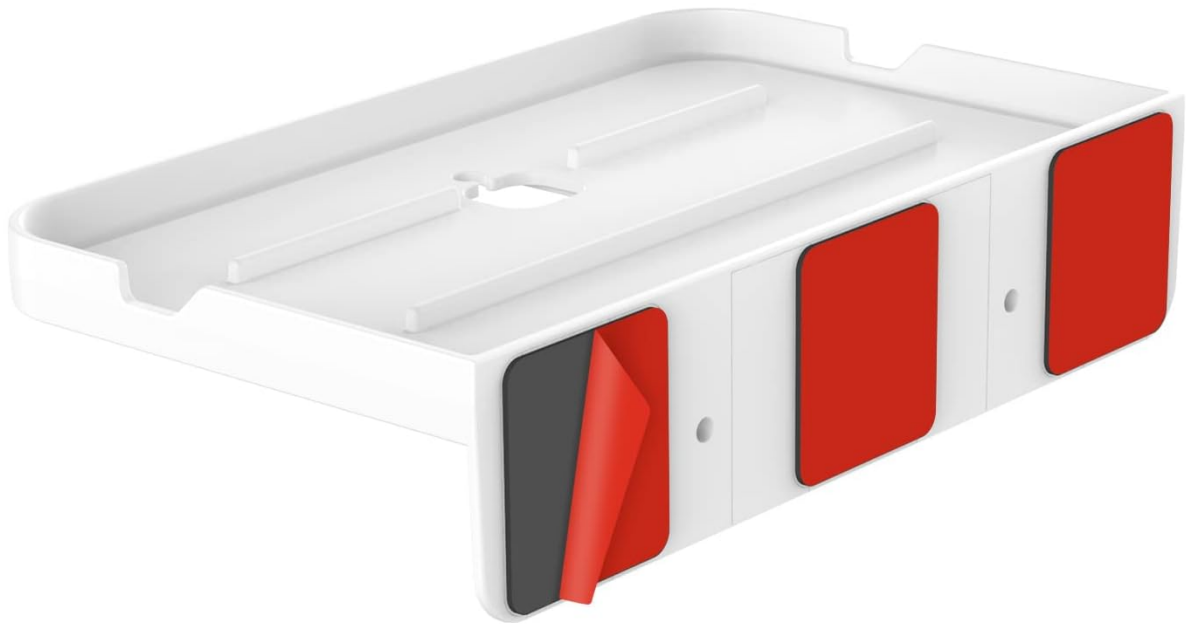
3. INSTALLATION

The PlusAcc Wall Mount Phone and Tablet Holder offers two installation methods: adhesive mounting for smooth surfaces and screw mounting for enhanced security.

3.1 Adhesive Installation (Recommended for smooth surfaces)

1. **Clean the Surface:** Ensure the wall surface is clean, dry, and free from dust, oil, or moisture. Ideal surfaces include ceramic tiles, glass, smooth metal, and other non-porous, smooth materials.
2. **Mark Position:** Determine the desired mounting location and mark it lightly with a pencil.
3. **Apply Adhesive:** Peel off the protective film from the adhesive pads located on the back of the holder.
4. **Attach to Wall:** Carefully align the holder with your marked position and press firmly against the wall for at least 30 seconds. Apply even pressure across all adhesive pads.
5. **Wait:** For optimal adhesion, allow 24-48 hours before placing any items on the holder. This allows the adhesive to fully cure.

Strong adhesive stick on smooth surfaces



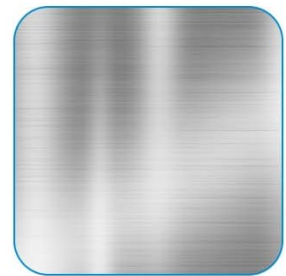
Ceramic



Tile



Glass



Smooth Metal

Image: A close-up view of the back of the wall mount, highlighting the strong adhesive pads, with icons indicating suitable smooth surfaces for adhesive application.

3.2 Screw Installation (Recommended for painted walls, wallpaper, or heavier items)

1. **Mark Drill Holes:** Hold the holder against the wall at the desired location and mark the positions for the screw holes using a pencil.
2. **Drill Holes:** Use an appropriate drill bit (typically 6mm or 1/4 inch) to drill pilot holes at the marked positions. Ensure the depth is sufficient for the wall anchors.
3. **Insert Wall Anchors:** Gently tap the plastic wall anchors into the drilled holes until they are flush with the wall surface.
4. **Mount Holder:** Align the screw holes on the holder with the wall anchors. Insert the screws and tighten them securely with a screwdriver until the holder is firmly attached to the wall. Do not overtighten.

Install with Screws

The Screws are included in the box, you could choose the screws to install



Image: A diagram illustrating the screw installation process, showing the wall mount being secured with screws and wall anchors into a wall.

Your browser does not support the video tag.

Video: Official product video demonstrating the features and installation methods of the PlusAcc Wall Mount Phone Holder.

4. USAGE

The PlusAcc Wall Mount Phone and Tablet Holder is designed for versatile use across various rooms and for different devices.

- **Device Placement:** Place your smartphone, tablet, or other small electronic devices securely on the holder. The front lip and side grooves help prevent devices from sliding off.
- **Charging Functionality:** Utilize the integrated charging hole slot at the bottom of the holder. Route your charging cable through this slot to connect your device to a power source while it rests on the mount. This keeps cables tidy and devices off countertops.
- **Multipurpose Storage:** Beyond electronics, the holder can be used to store various small items such as remote controls, keys, toiletries, or spices, depending on its placement.

PlusAcc

Phone wall mount makes
the life simple



Image: A collage demonstrating the multipurpose use of the wall mount in different rooms, holding items like toilet paper, spices, a phone, and an alarm clock.

Charging Hole Slot

Make your tablet convenient to charge



Image: A tablet resting on the wall mount, with its charging cable neatly routed through the dedicated charging hole slot at the bottom.

5. CARE AND MAINTENANCE

To ensure the longevity and appearance of your PlusAcc Wall Mount Phone and Tablet Holder, follow these simple care instructions:

- **Cleaning:** Wipe the holder regularly with a soft, damp cloth. For stubborn marks, a mild soap solution can be used. Avoid abrasive cleaners or harsh chemicals, as these may damage the finish.
- **Avoid Overloading:** Do not exceed the recommended weight capacity of the holder (approximately 1kg or 2.2 lbs). Overloading can compromise the integrity of the mount and lead to detachment.
- **Check Adhesion/Screws:** Periodically check the adhesive bond or the tightness of the screws to ensure the holder remains securely attached to the wall. Re-apply adhesive or tighten screws if necessary.

6. TROUBLESHOOTING

If you encounter any issues with your PlusAcc Wall Mount Phone and Tablet Holder, please refer to the following common problems and solutions:

Problem	Possible Cause	Solution
Holder is not sticking/falling off (Adhesive)	Surface was not clean/dry; adhesive not fully cured; surface is not smooth/porous; overloaded.	Ensure surface is thoroughly cleaned and dry before application. Allow 24-48 hours for adhesive to cure. Consider screw installation for non-smooth or porous surfaces, or if placing heavier items. Do not exceed weight limit.
Holder feels loose (Screw)	Screws are not tight enough; wall anchors are not secure.	Tighten screws carefully. If anchors are loose, remove, repair the wall, and re-install with new anchors if necessary.
Device does not fit securely	Device is too thick or too wide for the holder's grooves.	Verify device dimensions against product specifications. The holder is designed for standard smartphones and tablets.

7. PRODUCT SPECIFICATIONS

- **Brand:** PlusAcc
- **Model Number:** Wall Mount Phone Holder
- **Material:** Plastic
- **Color:** White
- **Mounting Type:** Adhesive or Screw Mount
- **Compatible Devices:** Smartphones, Tablets (e.g., iPad, Kindle Fire Devices)
- **Item Weight:** 4.2 ounces (approx. 119 grams)
- **Package Dimensions:** 9.8 x 6.18 x 1.77 inches
- **Special Features:** Charging hole slot, Portable design

8. WARRANTY AND SUPPORT

For warranty information, product support, or to contact customer service, please refer to the official PlusAcc website or the contact details provided on your product packaging. Keep your purchase receipt as proof of purchase for any warranty claims.