

GIMILI GM-1060N

GIMILI Modern Bar Sink Faucet

Model: GM-1060N

Brand: GIMILI

INTRODUCTION

Thank you for choosing the GIMILI Modern Bar Sink Faucet. This manual provides detailed instructions for the proper installation, operation, and maintenance of your new faucet. Please read this manual thoroughly before installation and retain it for future reference.

SAFETY INFORMATION

- Always turn off the main water supply before attempting any installation or repair.
- Ensure all local plumbing and building codes are met during installation.
- Use appropriate safety equipment, such as safety glasses, during installation.
- Do not overtighten connections, as this may cause damage to the faucet or plumbing.
- Test for leaks thoroughly after installation is complete.

FEATURES

- **Single Handle Design:** Features a single handle for easy control of water temperature and flow.
- **Modern Brushed Nickel Finish:** Provides a sleek and stylish aesthetic that resists fingerprints and corrosion.
- **High Flow Rate:** Delivers a maximum flow rate of 1.8 gallons per minute for efficient water delivery.
- **Pull-Out Sprayer:** Equipped with a pull-out sprayer for extended reach and versatile cleaning.
- **Dual Spray Modes:** Easily switch between stream mode for filling and spray mode for rinsing with a button on the sprayer head.
- **360-Degree Swivel:** The faucet spout swivels 360 degrees, suitable for single or double bowl sinks.
- **Advanced Ceramic Disc Valve:** Ensures drip-free performance and extended service life.

- **304 Stainless Steel Construction:** Durable and resistant to rust and corrosion.

PACKAGE CONTENTS

Please verify that all parts are included before beginning installation. If any parts are missing or damaged, please contact customer support.

- GIMILI Bar Sink Faucet Body
- Pull-Out Sprayer Head with Hose
- Mounting Hardware (nuts, washers)
- Hot and Cold Water Supply Hoses
- Gravity Ball Weight
- Instruction Manual

SPECIFICATIONS

Attribute	Specification
Brand	GIMILI
Model Name	GM-1060N
Recommended Uses	Bar, Kitchen, Prep Sink
Mounting Type	Deck Mount (Single Hole)
Finish Type	Brushed Nickel
Material	Stainless Steel
Number of Handles	1 (Lever Handle)
Flow Rate	1.8 Gallons Per Minute
Valve Type	Ceramic Cartridge Valve
Spout Height	9.6 Inches
Spout Reach	6.5 Inches
Mounting Hole Diameter	2 Inches (Countertop cut hole size: 1.3~1.5 inches)
Hose Length	18 Inches

Dimensions Overview

Refer to the diagram below for detailed product dimensions.



Image: Detailed dimensions of the GIMILI Modern Bar Sink Faucet, showing height, reach, and base diameter.



Image: Another view of the faucet with key measurements including total height (9.6"), spout reach (6.5"), and base width (2").

SETUP AND INSTALLATION

This faucet is designed for single-hole mounting and can typically be installed within 20 minutes. Ensure your countertop has a cut hole size between 1.3 to 1.5 inches for proper fit. This faucet is suitable for installation in a bar sink or a small single bowl sink.

Installation Steps

1. **Unscrew the Retaining Nut:** Remove the retaining nut from the faucet body.
2. **Mount Faucet to Sink:** Insert the faucet into the mounting hole on your sink or countertop.
3. **Tighten the Mounting Nuts:** Secure the faucet from underneath the sink using the provided mounting nuts and washers.
4. **Connect the Hoses:** Attach the hot and cold water supply hoses to your water lines. Ensure a tight, leak-free connection.
5. **Connect Sprayer Hose:** Connect the pull-out sprayer hose to the designated connection point on the faucet body.
6. **Install the Gravity Ball:** Attach the gravity ball weight to the pull-out hose beneath the sink to ensure smooth retraction of the sprayer.

EASY INSTALLATION WITHIN 20 MINUTES

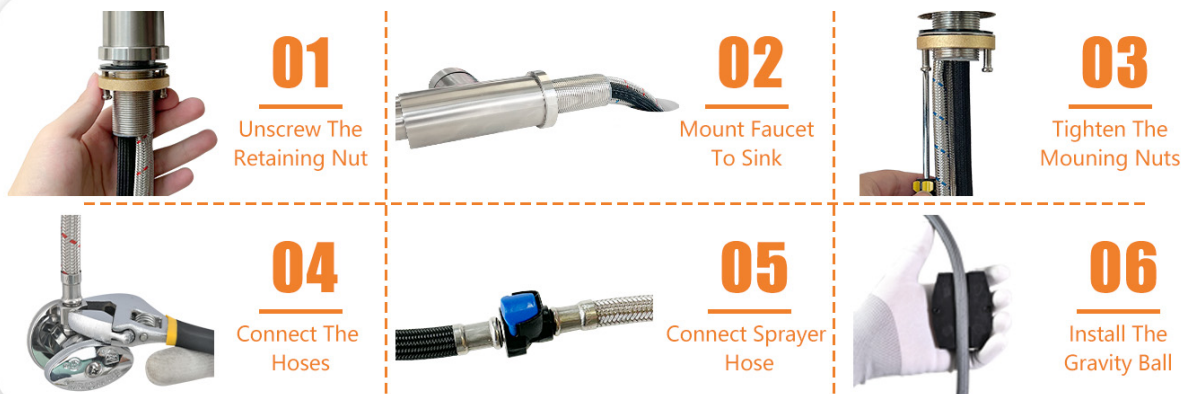


Image: Visual guide showing six steps for easy faucet installation, including unscrewing the retaining nut, mounting, tightening, connecting hoses, connecting the sprayer hose, and installing the gravity ball.

RV Installation Note

For RV installations, this product may require a 3/8" to 1/2" brass male thread adapter for the RV hose connection. This adapter is sold separately.



Image: Two brass adapters, illustrating the type of adapter that may be needed for RV hose connections.

OPERATING INSTRUCTIONS

Water Flow and Temperature Control

The single lever handle controls both water flow and temperature. Move the handle up to increase flow and down to decrease it. Pivot the handle left for hot water and right for cold water.



Image: Diagram illustrating the single handle control for adjusting hot and cold water flow.

Sprayer Functionality

The pull-out sprayer head offers two distinct spray modes:

- **Stream Mode:** Provides a soft, aerated stream suitable for washing hands or filling containers.
- **Spray Mode:** Delivers a powerful spray for rinsing dishes and cleaning the sink.

Switch between modes using the button located on the sprayer head. The sprayer can be pulled out for extended reach and retracts automatically thanks to the gravity ball design.



Image: Illustration showing the two spray modes (stream and spray) available from the faucet head.



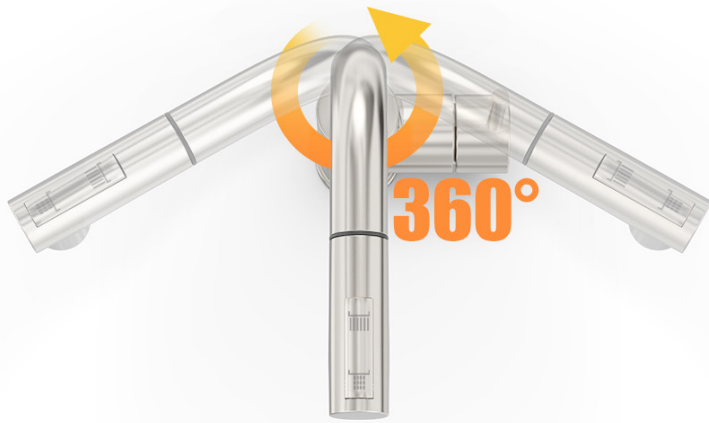
Pull-out kitchen faucet

The pull out nozzle can reach up to **16** inch.
Gravity ball make it go back automatically.

Image: A hand demonstrating the pull-out sprayer feature, showing its extended reach and spray function.

360-Degree Swivel

The faucet spout can rotate 360 degrees, providing flexibility for various sink configurations, including single and double bowl sinks.



360° DEGREE SWIVEL

It suitable both single bowl and double bowl kitchen sink.

Image: Diagram illustrating the 360-degree swivel capability of the faucet spout.

Applicable Scenarios

This versatile faucet is suitable for various applications:



Image: The faucet installed in a modern bar sink setting.



Image: The faucet integrated into a kitchen countertop with a sink.



Image: The faucet installed in a compact RV kitchen, highlighting its suitability for mobile living spaces.



Image: The faucet used as a bathroom basin faucet, showcasing its versatility.

MAINTENANCE

Regular cleaning and maintenance will ensure the longevity and optimal performance of your GIMILI faucet.

- **Cleaning the Finish:** Use a soft, damp cloth and mild soap to clean the brushed nickel finish. Avoid abrasive cleaners, harsh chemicals, or scouring pads, as these can damage the finish.
- **Cleaning the Sprayer Nozzles:** If water flow becomes irregular, the sprayer nozzles may be clogged. Gently rub the rubber nozzles to dislodge any mineral buildup. For stubborn clogs, unscrew the sprayer head and soak it in a vinegar solution.
- **Checking for Leaks:** Periodically inspect all connections for any signs of leaks. Tighten connections as needed, but do not overtighten.

TROUBLESHOOTING

Problem	Possible Cause	Solution
---------	----------------	----------

Problem	Possible Cause	Solution
Low Water Flow	Clogged aerator/sprayer nozzles; partially closed shut-off valves.	Clean aerator/sprayer nozzles. Ensure hot and cold water supply valves are fully open.
Leaks from Faucet Base	Loose mounting nut; damaged O-rings.	Tighten mounting nut from underneath the sink. Inspect and replace O-rings if damaged.
Leaks from Sprayer Head	Loose connection; damaged internal seals.	Ensure sprayer hose connection is tight. Contact customer support if internal seals are suspected.
Sprayer Does Not Retract	Gravity ball is obstructed or improperly installed.	Check that the gravity ball is freely moving and correctly positioned on the hose under the sink.

OFFICIAL PRODUCT VIDEO

Watch the official GIMILI Bar Sink Faucet video for a visual overview of its features and functionality.

Video: An official product video from GIMILI Sanitary Ware demonstrating the features and operation of the GIMILI Bar Sink Faucet, including its pull-out sprayer and dual modes.

WARRANTY AND SUPPORT

The GIMILI Modern Bar Sink Faucet comes with a limited warranty. For specific warranty details, please refer to the documentation included with your purchase or contact GIMILI customer support.

For technical assistance, troubleshooting, or warranty claims, please contact GIMILI Sanitary Ware directly. You may also refer to the seller information on your purchase platform for contact details.

Return Policy: This product is subject to a 30-day refund/replacement return policy.