

[Manuals.plus](#) /

› [Boolegon](#) /

› Boolegon Cordless Blackout Roller Shades User Manual

Boolegon 7a158d5c-ef9d-4808-8404-44e65e84368f

Boolegon Cordless Blackout Roller Shades User Manual

Model: 7a158d5c-ef9d-4808-8404-44e65e84368f

1. INTRODUCTION

This manual provides comprehensive instructions for the installation, operation, maintenance, and troubleshooting of your Boolegon Cordless Blackout Roller Shades. These shades are designed to provide room darkening, UV protection, and privacy for various indoor spaces such as bedrooms, living rooms, and offices.



Image: Boolegon Cordless Blackout Roller Shade in a living room setting, showcasing its design and available color options.

2. SAFETY INFORMATION

Your Boolegon Cordless Blackout Roller Shades feature a cordless spring system, which enhances safety for children and pets by eliminating hazardous cords. Please observe the following safety guidelines:

- Ensure the shade is installed securely according to the instructions to prevent accidental detachment.
- Regularly inspect the shade for any signs of wear or damage. Do not use if damaged.
- Keep the area around the window clear of obstacles that could interfere with the shade's operation.



SPRING SYSTEM
AUTO RISE
CHILD SAFETY



Image: Cordless design ensures child and pet safety, demonstrating the ease of operation with a gentle pull and release.

3. SETUP AND INSTALLATION

The Boolegon Cordless Blackout Roller Shades are designed for easy installation. The package includes all necessary mounting brackets, screws, and a handle. Please follow these steps carefully.

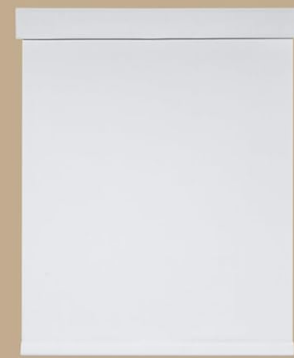
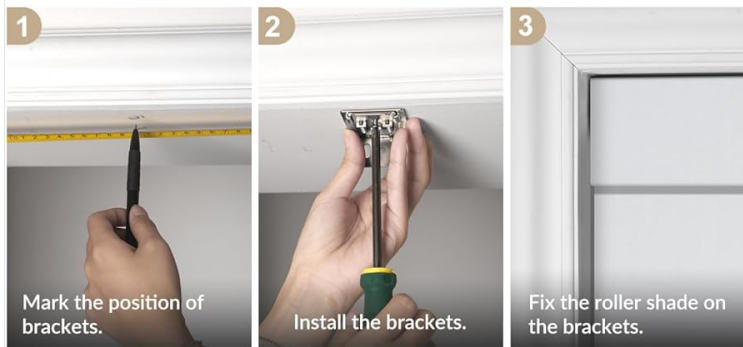
3.1. Package Contents

- Stylish Roller Shade (x1)
- Brackets (x2)
- Screws (x4)
- Handle (x1)
- User Manual (this document)

How to Measure



What's in the package



Stylish Roller Shades X1

Image: Visual guide for measuring window dimensions, listing included components, and illustrating the three-step installation process.

3.2. Measuring Your Window

Accurate measurements are crucial for proper fit and function. Determine whether you will use an inside mount or an outside mount.

- **For Inside Mount:**

- Minimum window frame depth required: 2 inches.
- Blind width should be at least 1/4 inch less than the inside window width.
- Blind height should be at least 2 inches longer than the inside window height.

- **For Outside Mount:**

- Blind width needs to be 4 inches wider than the window frame.
- Blind length needs to be 4 inches longer than the window frame.

3.3. Installation Steps

1. **Mark Position:** Hold the brackets in the desired installation location (inside or outside the window frame) and mark the screw holes with a pencil. Ensure the marks are level.
2. **Install Brackets:** Drill pilot holes if necessary, then secure the brackets using the provided screws.
3. **Fix Roller Shade:** Align the roller shade with the installed brackets and snap it into place. Ensure it is securely seated.

4. OPERATING INSTRUCTIONS

Your Boolegon roller shade features a cordless spring system for smooth and easy operation.

4.1. Raising and Lowering the Shade

- **To Lower:** Gently pull the handle downwards to the desired position. The shade will stay in place once you release the handle.
- **To Raise:** Gently pull the handle downwards slightly and then release it. The shade will automatically retract upwards. You can stop it at any desired height by gently pulling down again and releasing.

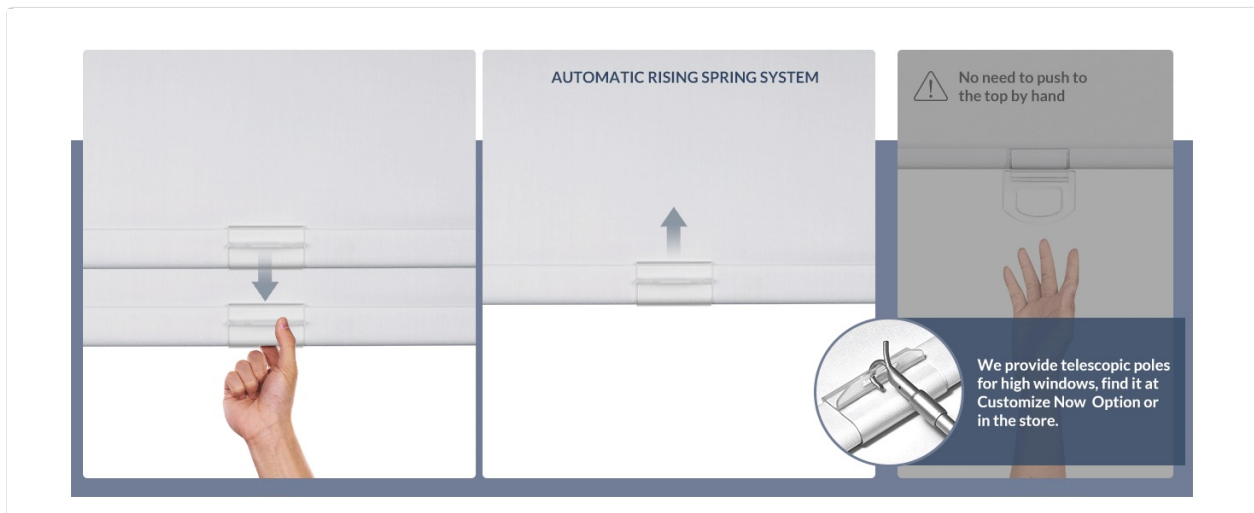


Image: Illustration of the automatic rising spring system and how to operate the shade. A telescopic pole option is available for high windows.

4.2. Blackout Functionality

The shade's four-layer polyester fabric with a white coating on the back provides 100% blackout capability, ensuring privacy and creating a dark environment when closed.

QUALITY SLEEP & PRIVACY PROTECTION



Image: Comparison of a room with the shade open versus closed, illustrating the effective blackout and privacy protection.

5. MAINTENANCE

To ensure the longevity and appearance of your Boolegon Cordless Blackout Roller Shades, follow these simple maintenance guidelines:

- **Cleaning:** Spot clean only. Use a soft, damp cloth with mild soap and water to gently clean any soiled areas. Do not immerse the shade in water or use harsh chemicals.
- **Dusting:** Regularly dust the shade with a soft brush or vacuum with a brush attachment to prevent dust buildup.
- **Inspection:** Periodically check the mounting hardware and the spring mechanism for any signs of loosening or damage.

6. TROUBLESHOOTING

If you encounter any issues with your roller shade, refer to the following common problems and solutions:

Problem	Possible Cause	Solution
Shade does not stop when partially drawn, or retracts fully when released.	The roller end on the control side may have become disconnected or dislodged from the internal mechanism.	Carefully remove the shade from its brackets. Inspect the ends of the roller tube. If a plastic part is pushed inside, gently pull it out and re-connect it to the roller. Re-install the shade and test operation. If the issue persists, contact customer support.
Shade does not retract smoothly or gets stuck.	Obstruction in the window frame, misaligned brackets, or internal spring issue.	Check for any obstructions. Ensure brackets are level and securely installed. If the issue continues, the internal spring mechanism may require attention; contact customer support.
Shade fabric is wrinkled or uneven.	Improper rolling during manufacturing or storage.	Fully extend the shade and leave it down for a day or two. The fabric tension may help smooth out minor wrinkles. If severe, contact customer support.

7. SPECIFICATIONS

Feature	Detail
Brand	Boolegon
Model Number	7a158d5c-ef9d-4808-8404-44e65e84368f
Material	Aluminum (components), Polyester Fabric (shade)
Color	White (100% Blackout)
Opacity	Blackout
Operation Mode	Manual, Cordless Spring System
Special Features	Blackout, Cordless, UV Protection, Room Darkening
Mounting Type	Inside Mount or Outside Mount
Product Care	Spot Clean Only
Recommended Use	Indoor: Bedroom, Dining Room, Family Room, Living Room, Nursery

8. WARRANTY AND SUPPORT

Boolegon is committed to providing high-quality products. Each blackout roller shade undergoes careful inspection before shipment to ensure you receive a new and functional product. Our shades have passed

extensive push and pull tests to ensure spring stability.

For any product inquiries, technical assistance, or warranty claims, please contact Boolegon customer service through the platform where you purchased the product (e.g., Amazon's messaging system). Please provide your order number and a detailed description of the issue to facilitate a prompt resolution.

Note: The provided product data did not include specific video files for embedding in this manual.