

Boytond YYK-520

Boytond YYK-520 Wireless Business Headset Instruction Manual

Model: YYK-520

1. INTRODUCTION

This manual provides detailed instructions for the proper use and maintenance of your Boytond YYK-520 Wireless Business Headset. Please read this manual thoroughly before operating the device to ensure optimal performance and longevity. Keep this manual for future reference.



Image 1: Boytond YYK-520 Wireless Business Headset and Charging Case. The headset features an over-ear design with an extended microphone boom, accompanied by a compact charging case displaying battery percentage.

2. PRODUCT OVERVIEW

The Boytond YYK-520 is a wireless business headset designed for clear communication and comfortable wear. It features Bluetooth V5.2 technology for stable connections, CVC8.0 noise cancellation for enhanced call quality, and a long-lasting battery. The ergonomic design ensures a secure fit for extended use.



Image 2: A person wearing the Boytond Bluetooth Headset, illustrating its use for hands-free communication.

3. WHAT'S IN THE BOX

- Boytond YYK-520 Wireless Business Headset
- Charging Case with LED Display
- USB-C Charging Cable
- Additional Eartips (various sizes)
- User Manual

4. SPECIFICATIONS

Model	YYK-520
Brand	Boytond
Connectivity Technology	Wireless (Bluetooth V5.2)
Wireless Communication Technology	Bluetooth
Noise Control Features	CVC8.0 Noise Cancellation
Special Feature	Built-in Mic
Earpiece Shape	Over Ear
Material	Plastic
Water Resistance Level	IPX4 Waterproof
Battery Life (Headset)	10-12 hours (talk/music)
Battery Life (with Charging Case)	Up to 100 hours total
Charging Time	Approx. 1.5 hours (for headset)
Compatible Devices	Android, iPhone, Laptops
Control Method	Touch, Voice (Siri)
Item Weight	4.2 Ounces

5. SETUP

5.1. Wearing the Headset

The headset features a rotatable ear hook and microphone boom for comfortable wear on either the left or right ear. Adjust the ear hook until it sits securely and comfortably around your ear, and position the microphone close to your mouth for optimal voice pickup.

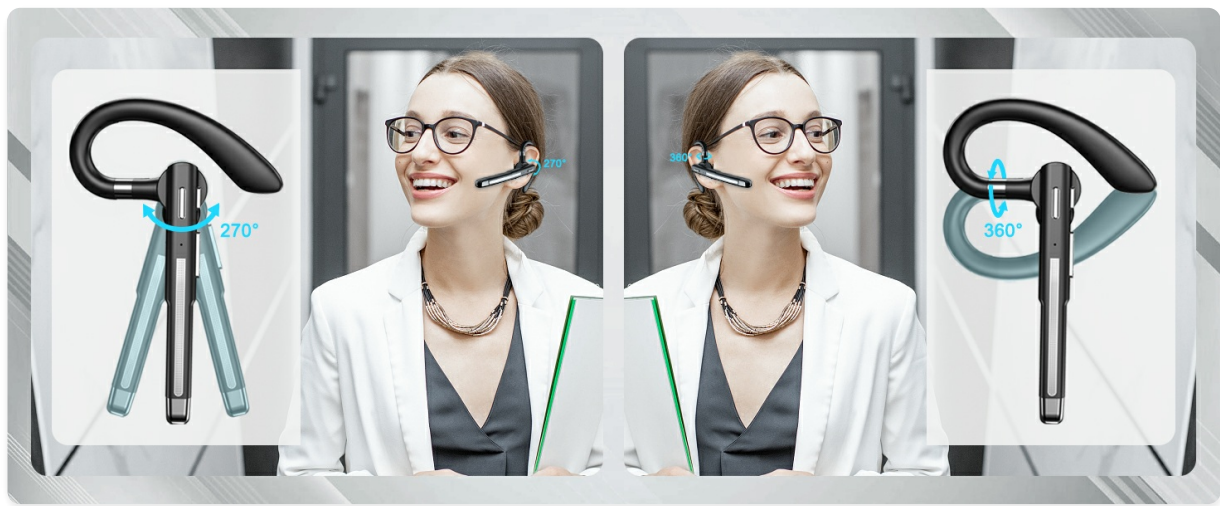


Image 3: Illustration of the headset's 270-degree rotatable ear hook and 360-degree adjustable microphone, allowing for use on either ear.

5.2. Pairing with a Device

1. Ensure the headset is charged and powered off.
2. Press and hold the multi-function button on the headset until the LED indicator flashes blue and red, indicating pairing mode.
3. On your smartphone, tablet, or laptop, enable Bluetooth and search for available devices.
4. Select "YYK-520" from the list of devices.
5. Once connected, the LED indicator will flash blue slowly.

The headset supports connecting to two devices simultaneously. After pairing with the first device, disable Bluetooth on that device, then pair with the second. Re-enable Bluetooth on the first device, and the headset should automatically connect to both.

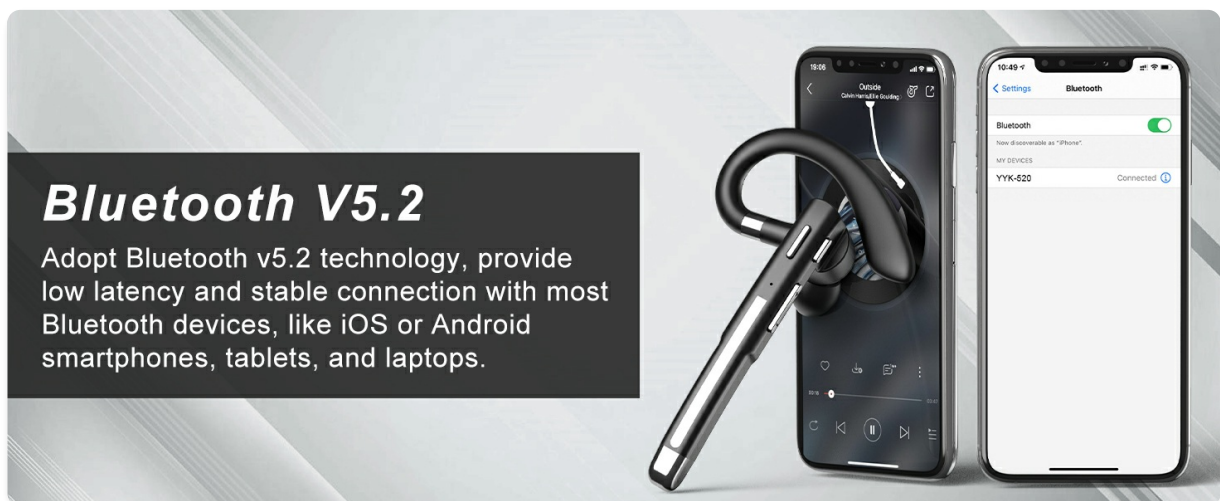


Image 4: Visual representation of the Bluetooth pairing process on a smartphone, showing the headset connected.

6. OPERATING INSTRUCTIONS

6.1. Basic Controls

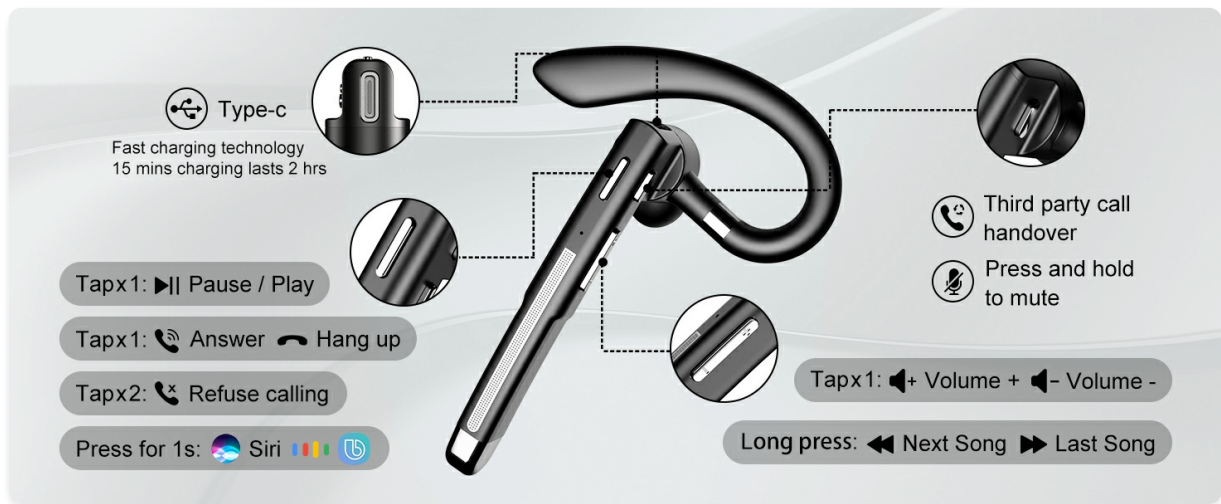


Image 5: Detailed diagram of the headset's control buttons, including Type-C port, volume controls, multi-function button, and mute button.

- **Power On/Off:** Press and hold the multi-function button.
- **Play/Pause Music:** Single tap the multi-function button.
- **Answer/End Call:** Single tap the multi-function button.
- **Reject Call:** Double tap the multi-function button.
- **Volume Up/Down:** Single tap the "+" or "-" buttons.
- **Next/Previous Track:** Long press the "+" (next) or "-" (previous) buttons.
- **Activate Voice Assistant (Siri):** Long press the multi-function button for 1 second.
- **Mute Function:** Press and hold the dedicated mute button.

6.2. Mute Function

To protect privacy during calls, the headset is equipped with a separate mute button. Press and hold this button to mute or unmute your microphone during a call.



Image 6: Visual guide to activating the mute function on the headset during a call.

6.3. Voice Assistant Activation

Activate your smartphone's voice assistant (e.g., Siri) by long-pressing the multi-function button for 1 second. This allows for hands-free control of your device, useful while driving or multitasking.



Image 7: Illustration of activating Siri or other voice assistants using the headset, demonstrating hands-free operation while driving.

7. CHARGING

The headset comes with a portable charging case. The case itself has a 500mAh capacity and an LED display to show its battery power. It can provide approximately 10 full charges for the headset.

- **Charging the Headset:** Place the headset into the charging case. The headset will begin charging automatically. The LED display on the case will show the charging status.
- **Charging the Case:** Connect the USB-C charging cable to the charging port on the case and to a power source. The LED display will indicate the charging progress.

A single charge of the headset provides 10-12 hours of talk/music time. With the fully charged case, the total usage time extends up to 100 hours.



Image 8: The charging case with the headset inside, displaying the battery percentage on its LED screen.

8. MAINTENANCE

- **Cleaning:** Regularly clean the eartips and the headset body with a soft, dry cloth. Avoid using harsh chemicals or abrasive materials.
- **Storage:** When not in use, store the headset in its charging case to protect it from dust and damage. Store in a cool, dry place.
- **Water Resistance:** The headset is IPX4 waterproof, meaning it is resistant to splashing water. Do not submerge the headset in water or expose it to heavy rain.

- **Battery Care:** To prolong battery life, avoid fully discharging the headset and charging case frequently. Charge them regularly, even if not in constant use.

9. TROUBLESHOOTING

Problem	Possible Solution
Headset does not power on.	Ensure the headset is charged. Press and hold the multi-function button for a few seconds.
Cannot pair with device.	Make sure the headset is in pairing mode (flashing blue/red LED). Ensure Bluetooth is enabled on your device and it is within range. Forget previous pairings on your device and try again.
No sound or poor sound quality.	Check volume levels on both the headset and your connected device. Ensure the headset is properly connected. Try re-pairing the headset.
Microphone not working.	Ensure the microphone is not muted. Check microphone settings on your connected device.
Charging case not charging.	Ensure the USB-C cable is securely connected to both the case and the power source. Try a different cable or power adapter.

10. WARRANTY AND SUPPORT

Boytond products are designed with quality and reliability in mind. For warranty information, technical support, or customer service inquiries, please refer to the contact details provided on the product packaging or visit the official Boytond website. Keep your purchase receipt as proof of purchase for warranty claims.