



Manuals.plus /

› Kazeuta /

› Kazeuta BBH-929s Neckband Bluetooth Speaker User Manual

Kazeuta BBH-929s

Kazeuta BBH-929s Neckband Bluetooth Speaker User Manual

Model: BBH-929s

1. INTRODUCTION

This manual provides detailed instructions for the Kazeuta BBH-929s Neckband Bluetooth Speaker. Please read this manual thoroughly before using the product to ensure proper operation and to maximize its lifespan. Keep this manual for future reference.



Image 1.1: The Kazeuta BBH-929s Neckband Bluetooth Speaker. This image displays the overall design of the speaker, which rests around the neck, featuring speaker grilles on both sides.

2. PRODUCT FEATURES

- **Quadruple Speaker System & 3D Surround Sound:** Equipped with four strategically placed speaker units designed to deliver immersive 3D surround sound, creating a realistic audio experience for movies or games.
- **Bluetooth 5.0 Technology:** Utilizes advanced Bluetooth 5.0 chipset for stable transmission, quick device connection within 2 seconds, and lossless HD sound quality.
- **Flexible and Wearable Design:** Features a soft, flexible rubber neckband for comfortable, all-day wear, providing a unique immersive sound experience without discomfort.
- **Extended Battery Life:** Integrates power management technology with two 380mAh high-efficiency Li-Ion batteries, offering up to 10 hours of music playback on a single charge.
- **IPX4 Water Resistance:** Designed with daily life waterproofing, making it resistant to rain or splashing, equivalent to protection class IPX4.
- **CVC8.0 Noise Cancelling Technology:** Enhances call clarity by reducing ambient noise.
- **Lightweight Design:** Weighs approximately 85 grams (5.3 ounces) for comfortable wear.

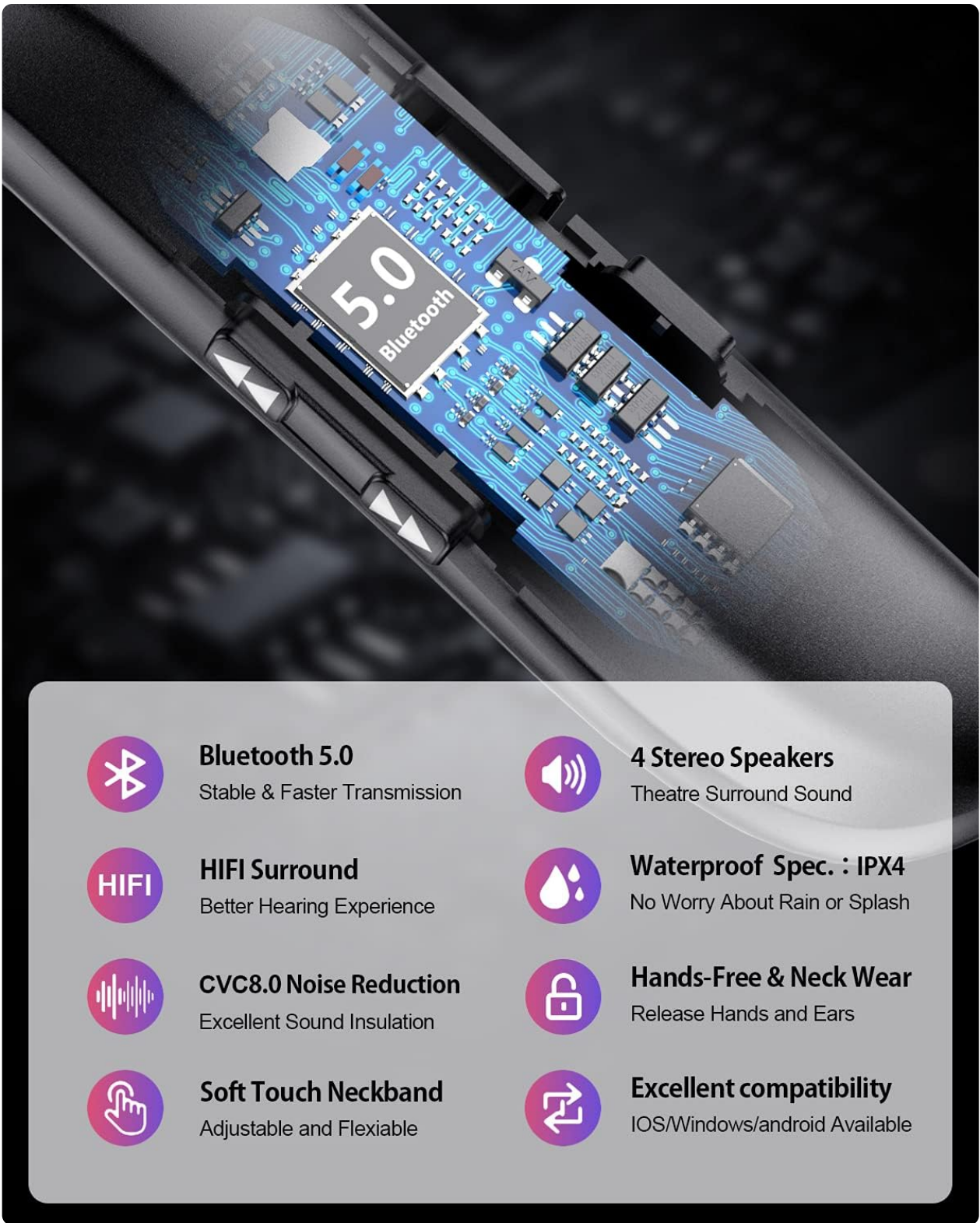


Image 2.1: An infographic highlighting key features such as Bluetooth 5.0, 4 stereo speakers, HiFi surround, IPX4 waterproof rating, CVC8.0 noise reduction, hands-free and neck wear design, soft touch neckband, and excellent compatibility.

Quadruple Speakers System HIFI Surround Sound

4 Strategically Units Bring a Theater Wherever You Go

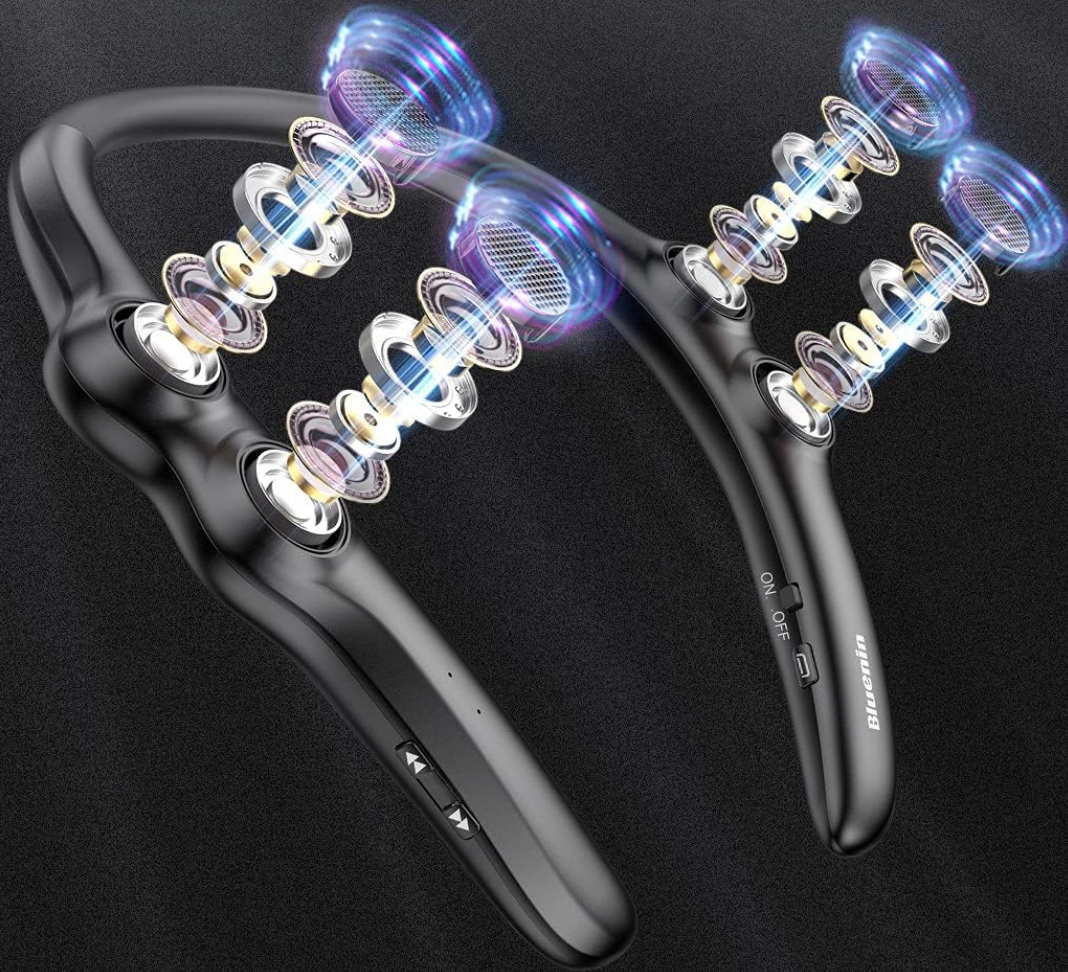


Image 2.2: A visual representation of the quadruple speaker system, showing four speaker units on each side of the neckband, illustrating the 3D surround sound capability.

3. PACKAGE CONTENTS

Please check the package for the following items:

- 1 x Kazeuta BBH-929s Neckband Bluetooth Speaker
- 1 x USB Charging Cable
- 1 x User Manual (this document)

4. SETUP AND GETTING STARTED

4.1 Charging the Speaker

Before first use, fully charge the speaker. Connect the provided USB charging cable to the charging port on the speaker and to a USB power source (e.g., computer, wall adapter). The charging indicator light will show the charging status. A full charge takes approximately 2.5 hours.



Image 4.1: An illustration showing the speaker's battery life, indicating 3.0 hours for full charge, 380mAh battery capacity, and 10 hours of music time.

4.2 Powering On/Off

- **To Power On:** Press and hold the Power button until the indicator light flashes.
- **To Power Off:** Press and hold the Power button until the indicator light turns off.

5. OPERATING INSTRUCTIONS

5.1 Bluetooth Pairing

1. Ensure the speaker is charged and powered off.
2. Press and hold the Power button for approximately 3-5 seconds until the indicator light flashes blue and red alternately, indicating pairing mode.
3. On your device (smartphone, tablet, computer), enable Bluetooth and search for available devices.
4. Select "BBH-929s" from the list of found devices.
5. Once paired, the indicator light will flash blue slowly, and you will hear an audible confirmation.

Multi-device Connection: The BBH-929s supports simultaneous connection to up to two Bluetooth devices.

After pairing with the first device, disable Bluetooth on that device, then pair with the second device. Re-enable Bluetooth on the first device, and the speaker should connect to both.

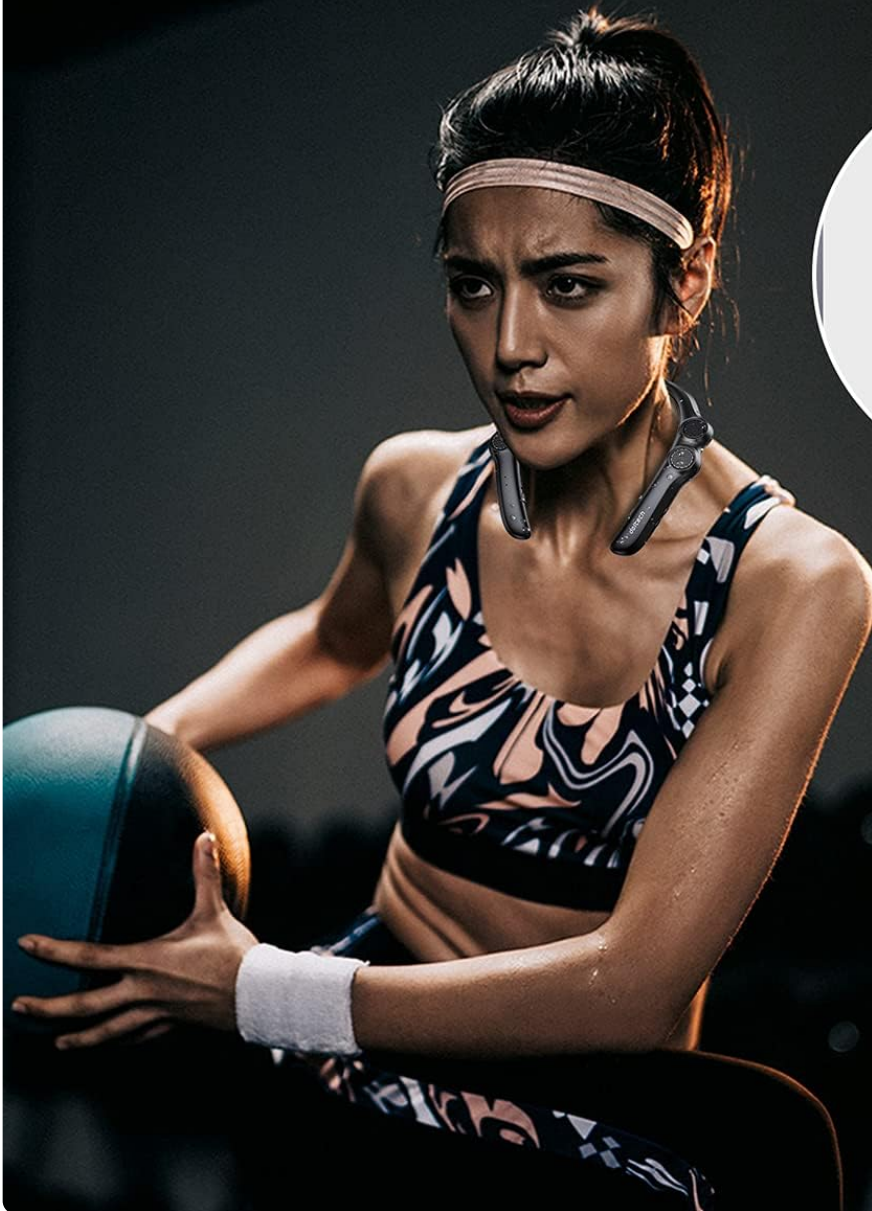
5.2 Basic Controls

The speaker features intuitive controls for media playback and calls.

- **Play/Pause:** Press the Play/Pause button once.
- **Volume Up:** Press the Volume Up (+) button.
- **Volume Down:** Press the Volume Down (-) button.
- **Next Track:** Press and hold the Volume Up (+) button.
- **Previous Track:** Press and hold the Volume Down (-) button.
- **Answer/End Call:** Press the Play/Pause button once during an incoming call.
- **Reject Call:** Press and hold the Play/Pause button during an incoming call.
- **Voice Assistant:** Double-press the Play/Pause button to activate your device's voice assistant (e.g., Siri, Google Assistant).

Soft Neckband & Comfortable Fit

Wear it all day, Never get tired



80 g
Lightweight

Image 5.1: A person wearing the Kazeuta BBH-929s neckband speaker, demonstrating its comfortable and lightweight design for extended use.



Image 5.2: A collage showing the neckband speaker being used in various scenarios: while driving, during a workout at the gym, and while gaming, highlighting its versatility and IPX4 sweatproof feature.

6. MAINTENANCE

- **Cleaning:** Wipe off any dirt or dust with a soft, dry cloth. Do not use harsh chemicals or abrasive materials.
- **Water Exposure:** While the speaker is IPX4 water-resistant (splash-proof), avoid submerging it in water or exposing it to heavy rain. Ensure the charging port cover is securely closed.
- **Storage:** Store the speaker in a cool, dry place away from direct sunlight and extreme temperatures.
- **Battery Care:** To prolong battery life, avoid fully discharging the battery frequently. Charge the speaker

regularly, even if not in use for extended periods.

7. TROUBLESHOOTING

Speaker does not power on:

Ensure the speaker is fully charged. Connect it to a power source and try again after a few minutes.

Cannot pair with a Bluetooth device:

- Ensure the speaker is in pairing mode (indicator light flashing blue and red).
- Make sure Bluetooth is enabled on your device.
- Move the speaker closer to your device (within 33 feet/10 meters).
- Clear the Bluetooth pairing list on your device and try pairing again.
- Restart both the speaker and your Bluetooth device.

No sound or low volume:

- Increase the volume on both the speaker and your connected device.
- Ensure the speaker is properly paired and connected to your device.
- Check if the audio output on your device is set to the Bluetooth speaker.

Poor sound quality or intermittent connection:

- Ensure there are no obstructions between the speaker and your device.
- Move away from sources of interference (e.g., Wi-Fi routers, other Bluetooth devices).
- Ensure the speaker is within the effective Bluetooth range.

8. SPECIFICATIONS

Feature	Detail
Model Name	BBH-929s
Bluetooth Version	Bluetooth 5.0
Working Distance	≤33 ft (10 meters)
Water Resistance	IPX4 (Sweatproof/Splashproof)
Simultaneous Connections	Up to 2 devices
Music/Talk Time	Up to 10 hours
Charging Time	Approximately 2.5 hours
Standby Time	500 hours
Battery Capacity	2 x 380mAh
Item Weight	85g (5.3 ounces)
Product Dimensions	7 x 6 x 0.7 inches
Control Type	Voice Control, Button Control
UPC	794094697177

9. SAFETY INFORMATION

Please observe the following precautions for safe and optimal use:

- To protect your hearing, avoid listening at excessively high volumes for prolonged periods.
- Do not immediately set the volume to maximum; gradually increase it to a comfortable level to prevent sudden loud noises.
- Do not use this product to listen to music while driving a car, as it may impair your awareness of traffic conditions.
- Wipe the product with a soft, dry cloth to clean. Avoid getting it wet to prevent damage.
- If connecting to a TV without built-in Bluetooth, a separate Bluetooth transmitter is required.

10. WARRANTY AND SUPPORT

10.1 Warranty Policy

Kazeuta provides a 30-day money-back guarantee and a 12-month replacement warranty for the BBH-929s Neckband Bluetooth Speaker. This warranty covers manufacturing defects and issues arising from normal use.

10.2 Customer Support

For any questions, concerns, or warranty claims, please contact customer support via the address provided in the original user manual. Our support team aims to respond within 24 hours.

