

Manuals+

[Q & A](#) | [Deep Search](#) | [Upload](#)

Manuals.plus /

> [DABAZUALY](#) /

> DABAZUALY Air Filter and Oil Filter Tune-Up Kit Instruction Manual for Kohler KT610-KT745 Lawn Mower Engines

DABAZUALY 32-083-09-S

DABAZUALY Air Filter and Oil Filter Tune-Up Kit Instruction Manual

For Kohler KT610-KT745 Lawn Mower Engines (19-26 HP 7000 Series)

INTRODUCTION

This manual provides detailed instructions for the installation and maintenance of the DABAZUALY Air Filter and Oil Filter Tune-Up Kit. This kit is designed to maintain optimal performance for Kohler KT610, KT620, KT715, KT725, KT730, KT735, KT740, and KT745 19-26 HP 7000 Series lawn mower engines. Regular replacement of these components is crucial for engine longevity and efficiency.



Image: A lawn mower in use, demonstrating the application of the tune-up kit components.

PRODUCT CONTENTS

The DABAZUALY Tune-Up Kit includes the following components:

- 1 × Air Filter (Replaces Kohler Part Number: 32 083 09-S, 32 083 09, 32 883 09-S1, KH-32-883-09-S1)
- 1 × Pre-Cleaner (Replaces Kohler Part Number: 32-083-10-S)
- 1 × Fuel Pump
- 1 × Oil Filter (Replaces Kohler Part Number: 12 050 01-S, 12 050 08, 52 050 02-S, 25 050 27, 25 050

34-S, 25 050 33-S)

- 1 × Fuel Pipe
- 1 × Fuel Filter
- 2 × Spark Plugs
- 1 × Shut-Off Valve
- 4 × Clamps



Image: All components included in the DABAZUALY tune-up kit.

SETUP AND INSTALLATION

Before beginning any maintenance, ensure the engine is cool, the spark plug wire is disconnected, and the fuel valve is closed to prevent accidental starting or fuel leaks. Refer to your specific lawn mower's service manual for detailed engine access procedures.

1. Air Filter and Pre-Cleaner Installation

1. Locate the air filter housing on your engine.
2. Remove the cover and carefully extract the old air filter and pre-cleaner.
3. Install the new pre-cleaner over the new air filter.
4. Insert the assembled air filter and pre-cleaner into the housing, ensuring a snug fit.
5. Secure the air filter housing cover.



Image: Air filter with key dimensions for fitment verification.

2. Oil Filter Replacement

1. Place a drain pan under the engine's oil drain plug.
2. Drain the old engine oil.
3. Carefully unscrew the old oil filter. Be prepared for residual oil to drip.
4. Apply a thin film of new engine oil to the gasket of the new oil filter.
5. Screw on the new oil filter by hand until the gasket makes contact, then tighten an additional 1/2 to 3/4 turn. Do not overtighten.
6. Refill the engine with the recommended type and amount of new engine oil. Check the dipstick for the correct level.



Image: The replacement oil filter.

3. Fuel System Components (Fuel Pump, Fuel Filter, Fuel Pipe, Shut-Off Valve)

1. Ensure the fuel tank is low or empty, and the existing fuel shut-off valve (if present) is closed.
2. Carefully disconnect the old fuel lines, fuel pump, and fuel filter. Be mindful of any fuel spills.
3. Install the new fuel pump, ensuring the inlet and outlet ports are correctly oriented.
4. Connect the new fuel pipe and fuel filter in the correct flow direction (arrow on filter usually indicates flow).
5. Install the new shut-off valve in an accessible location along the fuel line.
6. Secure all connections with the provided clamps.

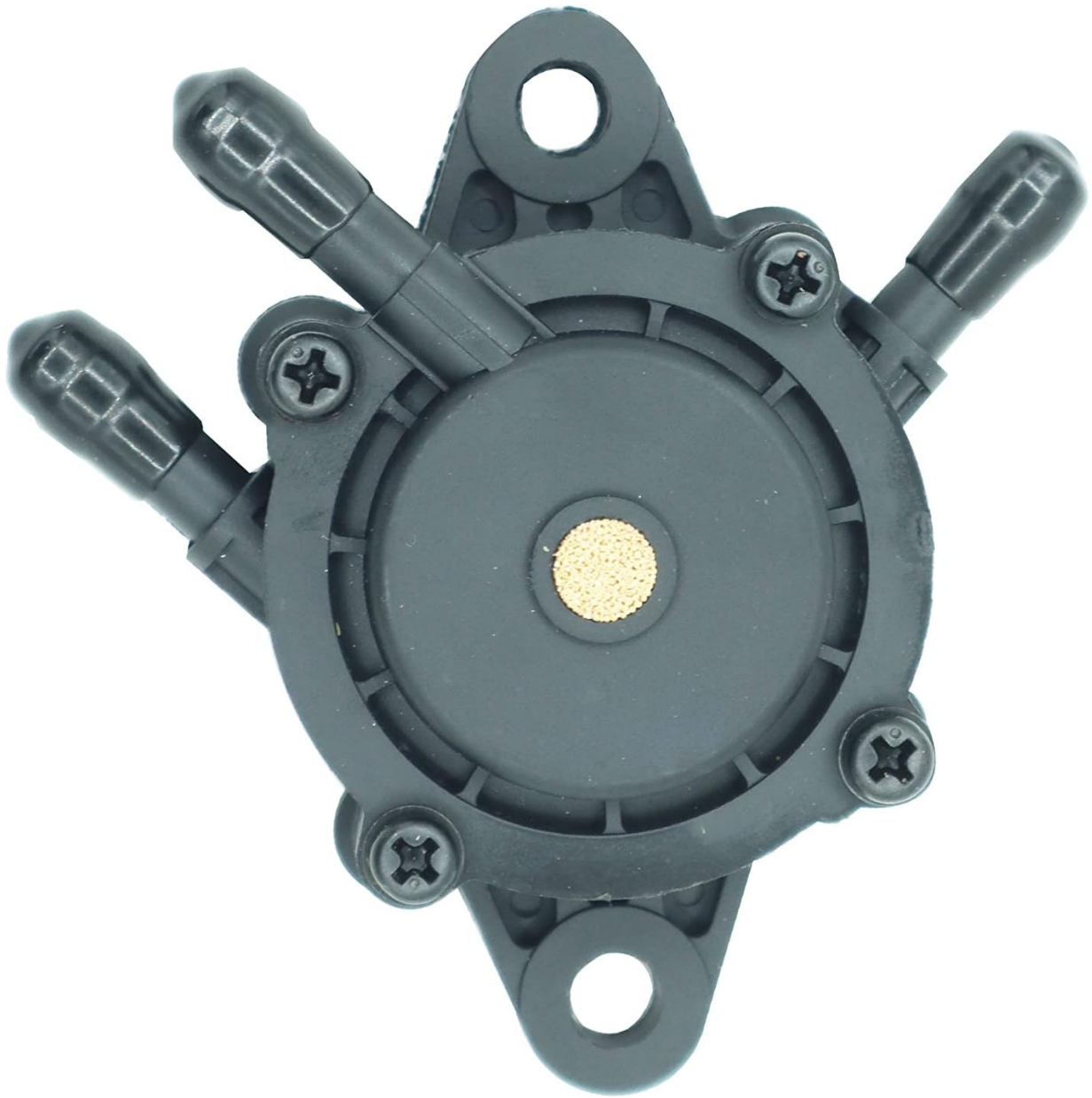


Image: The replacement fuel pump.

4. Spark Plug Replacement

1. Remove the spark plug wire(s) from the old spark plug(s).
2. Use a spark plug wrench to carefully remove the old spark plug(s).
3. Gap the new spark plug(s) according to your engine manufacturer's specifications (typically found in your mower's manual).
4. Thread the new spark plug(s) into the engine by hand to avoid cross-threading.
5. Tighten with a spark plug wrench, usually about 1/4 to 1/2 turn after hand-tight, or to the torque specified in your engine manual.
6. Reconnect the spark plug wire(s).



Image: The two replacement spark plugs.

OPERATING CONSIDERATIONS

After installing all components, ensure all connections are secure and there are no fuel leaks. Reconnect the spark plug wire(s) and open the fuel valve. Start the engine and allow it to run for a few minutes, checking for any unusual noises or leaks. A properly tuned engine will typically run smoother and more

efficiently.

MAINTENANCE

Regular maintenance is key to extending the life of your lawn mower engine. The frequency of replacement for these components depends on usage and operating conditions. As a general guideline:

- **Air Filter and Pre-Cleaner:** Inspect every 25 hours of operation or annually. Replace if dirty or damaged. More frequent replacement may be necessary in dusty conditions.
- **Oil Filter:** Replace with every oil change, typically every 50 hours of operation or annually.
- **Fuel Filter:** Replace annually or if fuel flow issues are observed.
- **Spark Plugs:** Inspect annually and replace every 100-200 hours of operation, or if misfiring or hard starting occurs.

TROUBLESHOOTING

Issue	Possible Cause	Solution
Engine runs poorly after tune-up	Incorrect installation, loose connections, wrong part fitment.	Double-check all connections. Verify part numbers and dimensions against your engine's requirements. Ensure spark plug gap is correct.
Air filter does not fit properly	Variations in engine models or manufacturing tolerances.	Confirm the air filter dimensions match your original filter. Some models may have slight differences.
Fuel leak after installation	Loose clamps, improperly seated fuel lines, damaged fuel pipe.	Tighten all clamps. Ensure fuel lines are fully seated on fittings. Inspect fuel pipe for cuts or damage.

SPECIFICATIONS

This tune-up kit is designed for the following Kohler engine series and horsepower ranges:

- **Engine Series:** KT610, KT620, KT715, KT725, KT730, KT735, KT740, KT745 (7000 Series)
- **Horsepower:** 19-26 HP

Replacement Part Numbers:

- **Air Filter:** Replaces 32 083 09-S, 32 083 09, 32 883 09-S1, KH-32-883-09-S1
- **Pre-Cleaner:** Replaces 32-083-10-S
- **Oil Filter:** Replaces 12 050 01-S, 12 050 08, 52 050 02-S, 25 050 27, 25 050 34-S, 25 050 33-S

Product Dimensions (Air Filter):

- Length: Approximately 6.67 inches
- Width: Approximately 4.43 inches
- Height: Approximately 2 inches

WARRANTY AND SUPPORT

For specific warranty information or technical support regarding your DABAZUALY tune-up kit, please refer to the product packaging or contact the manufacturer directly through their official channels. Ensure you have your product model number (32-083-09-S) and purchase details available when seeking support.