

## GOLDFOX B0B293JC9Z

# GOLDFOX Bike Tail Light with Turn Signal

Model: B0B293JC9Z

## INTRODUCTION

This manual provides detailed instructions for the installation, operation, and maintenance of your GOLDFOX Bike Tail Light with Turn Signal. This product is designed to enhance cycling safety by providing clear turn signals and various lighting modes for visibility during night rides or adverse weather conditions. It features a remote control for easy operation, USB rechargeable batteries, and a waterproof design.

The system includes four turn signal units and a remote control, allowing for both front and rear signal functionality. The lights offer five distinct modes to adapt to different riding environments and safety needs.

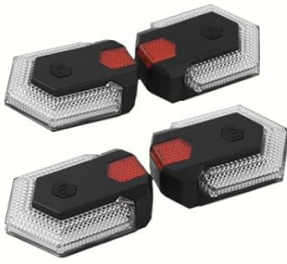



## WHAT'S IN THE BOX

Carefully unpack the contents and ensure all items are present:

- 4 x Turn Signal Units
- 1 x Rechargeable Remote Control
- 1 x Double Charging USB Cable
- 1 x Rear Seat Tube Bracket
- 4 x Small Bar Brackets
- 12 x Frictional Pad Stickers
- 6 x Rubber Bands

# All Accessories

## Part1 Professional Wireless Light Set

<b>1</b> 	<b>2</b> 	<b>3</b> 	<b>4</b> 
4*Turn Signals	1*Rechargeable Remote Control	1*USB Charging Cable	1*instructions

## Part2 Specially Designed and Widely Applicable Brackets kit

<b>5</b> 	<b>6</b> 	<b>7</b> 	<b>8</b> 
1*Rear Seat Tube Bracket	4*Bar Brackets	12*Frictional Pad Sticker	6*Rubber Bands

Figure 1: All included accessories and components.

## SETUP AND INSTALLATION

Follow these steps to install and pair your GOLDFOX Bike Tail Light with Turn Signal:

### 1. Mounting the Turn Signal Units

The turn signal units can be mounted on various parts of your bicycle, such as handlebars, seat posts, or forks, using the provided brackets and rubber bands. Choose locations that offer maximum visibility to other road users.

## Bike Turn Signals Front



## Bike Turn Signals Rear

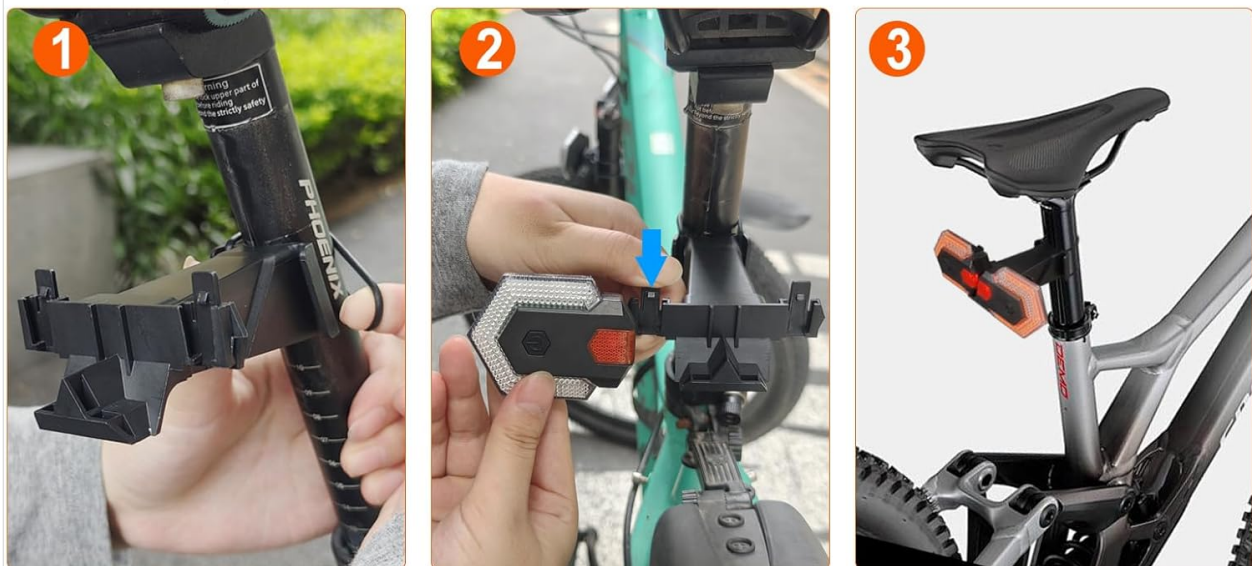


Figure 2: Installation steps for front and rear turn signals.

## 2. Mounting the Remote Control

Attach the remote control to your handlebar using the small bracket and rubber O-ring, ensuring it is within easy reach for safe operation while riding.

## 3. Pairing the Lights with the Remote Control

To ensure proper functionality, the turn signal units must be paired with the remote control. Refer to the video below for a visual guide on the pairing process.

Your browser does not support the video tag. This video demonstrates how to pair the GOLDFOX Bike Tail Light with Turn Signals to its remote control, showing the steps of pressing and holding the power button on the lights and then pressing the corresponding turn signal button on the remote.

Video 1: Pairing instructions for the GOLDFOX Bike Tail Light with Turn Signals.



Figure 3: Step-by-step visual guide for pairing the turn signals.

## OPERATING INSTRUCTIONS

The remote control allows you to easily switch between different lighting modes and activate turn signals.

### Activating Turn Signals

Press the left or right arrow button on the remote control to activate the corresponding turn signal. The signal will flash to indicate your intended direction.

### Switching Lighting Modes

Press the central switch button on the remote control to cycle through the available lighting modes. The modes are designed for various visibility needs:

1. **Mode 1:** Red light keeps flashing (for night caution).
2. **Mode 2:** Red light and yellow turn light keep flashing (warning).
3. **Mode 3:** LED direction indicator OFF. (Turn signals can only be activated by remote in Mode 1 & 3. Please switch to Mode 3 after use for battery-saving by the Remote or LED Direction Indicator.)

# 5 MODES LIGHTING EFFECTS



Figure 4: Visual representation of the 5 lighting modes.

# Bicycle turn signals front and rear

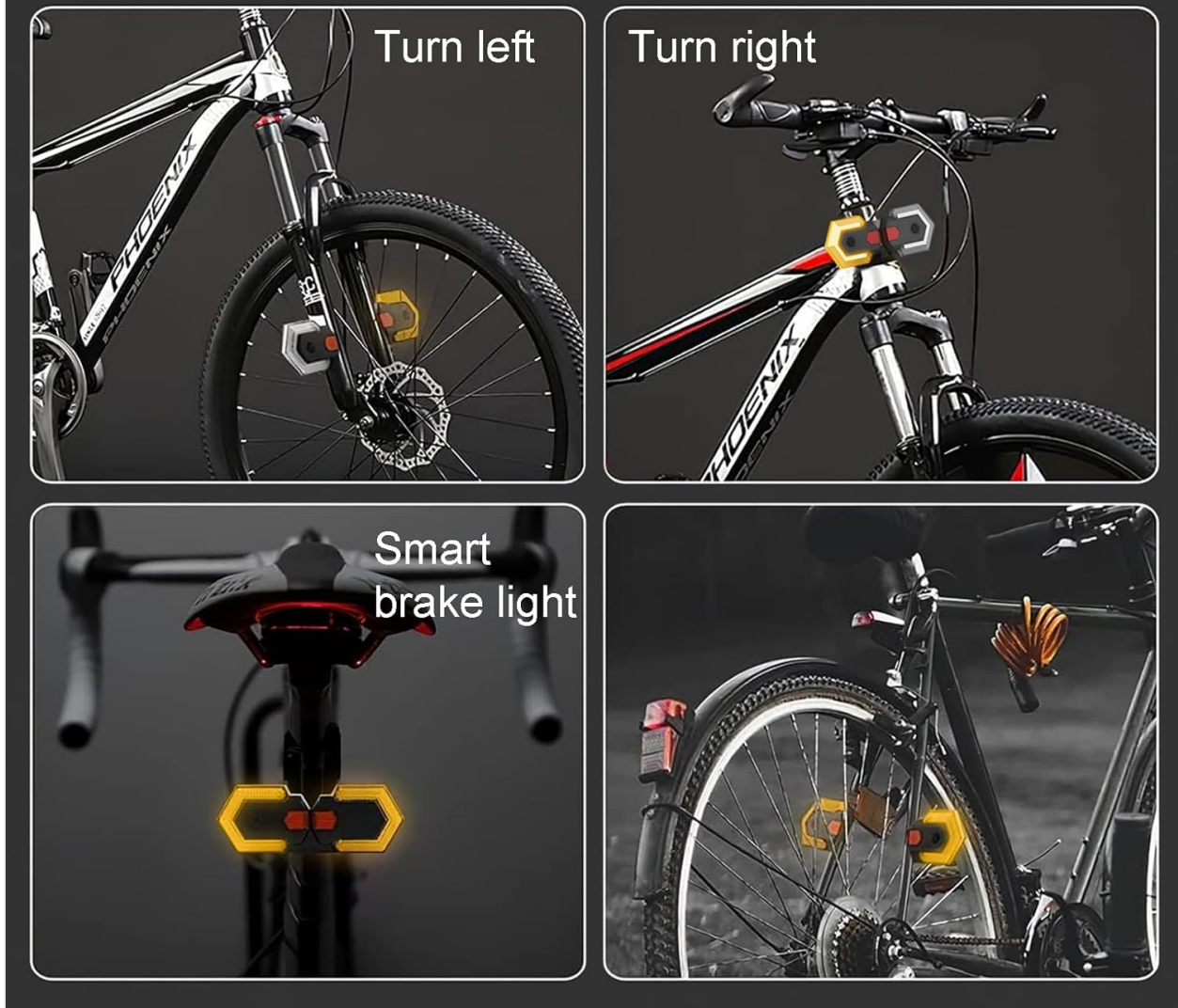


Figure 5: Turn signals in action on a bicycle.

## CHARGING

The GOLDFOX Bike Tail Light with Turn Signal is USB rechargeable. Use the provided double charging USB cable to charge the units. The charging port is designed for convenience and compatibility with various USB power sources.

- Connect the USB cable to the charging port on each light unit.
- Plug the other end of the USB cable into a power bank, laptop, wall adapter, or any device with a USB port.
- Ensure the lights are fully charged before use to maximize operating time. The working time can last approximately 4 hours of continuous flashing in a fully charged state.

# USB Rechargeable

Charge from any device with USB port



Figure 6: USB charging setup for the turn signals.

## MAINTENANCE

To ensure the longevity and optimal performance of your GOLDFOX Bike Tail Light with Turn Signal, follow these maintenance guidelines:

- **Cleaning:** Wipe the units with a soft, damp cloth to remove dirt and debris. Avoid using harsh chemicals or abrasive materials.
- **Water Resistance:** The units have an IP65 waterproof rating, making them suitable for use in rainy and foggy conditions. However, avoid submerging them in water for extended periods.
- **Storage:** Store the lights in a cool, dry place when not in use. If storing for an extended period, ensure they are fully charged and recharge them periodically to maintain battery health.
- **Battery Care:** Do not overcharge or completely drain the batteries regularly. Follow recommended charging practices.



Figure 7: The IP65 waterproof design ensures functionality in various weather conditions.

## TROUBLESHOOTING

If you encounter any issues with your GOLDFOX Bike Tail Light with Turn Signal, refer to the following common problems and solutions:

- **Lights not turning on:** Ensure the units are charged. Press and hold the power button on each unit for 3 seconds to turn them on.
- **Turn signals not responding to remote:** Check if the remote control battery is functional. Re-pair the lights with the remote control following the pairing instructions in the Setup section.
- **Lights not flashing correctly:** Verify that the units are properly paired and that the selected mode is appropriate. If issues persist, try resetting the units by turning them off and on again.
- **Short battery life:** Ensure the units are fully charged. Avoid leaving them in Mode 2 (red and yellow flashing) when not actively riding, as this consumes more power. Switch to Mode 3 (off) for battery saving.

## SPECIFICATIONS

Feature	Detail
Brand	GOLDFOX
Color	Black
Material	Silicone
Power Source	Battery Powered (USB Rechargeable)
Water Resistance Level	IPX6 Waterproof
Mounting Type	Seat Mount, Bar Mount
Product Dimensions	2.56"L x 2.04"W x 1.89"H
Number of Settings	3 (Modes)
Auto Part Position	Rear (can be used front)
Battery Life	Approx. 4 hours continuous flashing (fully charged)

## WARRANTY AND SUPPORT

---

Your GOLDFOX Bike Tail Light with Turn Signal comes with a 2-Year Manufacturer Warranty. This warranty covers defects in materials and workmanship under normal use.

For any questions, technical assistance, or warranty claims, please feel free to contact GOLDFOX customer support. Our mission is to provide you with quality products and excellent service.

Contact information can typically be found on the product packaging or the official GOLDFOX website.

## WIDE COMPATIBILITY

---

This wireless turn signal light system is suitable for various non-motorized vehicles, including bicycles and e-bikes. Its versatile design allows for installation in both front and rear positions, making it a recommended safety accessory for commuters and students.

# Wide Application



E-bike



Bicycle



Motorcycle



Scooter

Figure 8: The turn signals are compatible with various vehicles.