

[Manuals.plus](#) /

> [MOMMED](#) /

> MomMed Portable Pet Scale Instruction Manual

MOMMED B0B255BM2S

MomMed Portable Pet Scale

Model: B0B255BM2S

Precision Digital Scale for Newborn Puppy to 33lb

INTRODUCTION

Thank you for choosing the MomMed Portable Pet Scale. This precision digital scale is designed to accurately measure the weight of small animals, including newborn puppies, kittens, rabbits, ferrets, snakes, and hamsters, up to a maximum of 33 pounds (15 kg). It features a hold function, tare function, and unit conversion for convenient use. This manual provides essential information for proper setup, operation, maintenance, and troubleshooting to ensure optimal performance and longevity of your scale.

SETUP

1. Unboxing and Inspection

Carefully remove all components from the packaging. Inspect the scale for any signs of damage during transit. Ensure all parts are present: the scale unit and the weighing tray.

2. Battery Installation

The MomMed Pet Scale requires 2 AAA batteries (typically included). Locate the battery compartment on the underside of the scale. Open the compartment cover, insert the batteries according to the polarity indicators (+/-), and close the cover securely.



Image: Underside of the scale with battery compartment and anti-skid supports.

3. Placement of the Scale

For accurate readings, place the scale on a **hard, flat, and stable surface** such as a table or the floor. Avoid placing the scale on soft surfaces like carpets, rugs, or beds, as this can lead to inaccurate measurements.

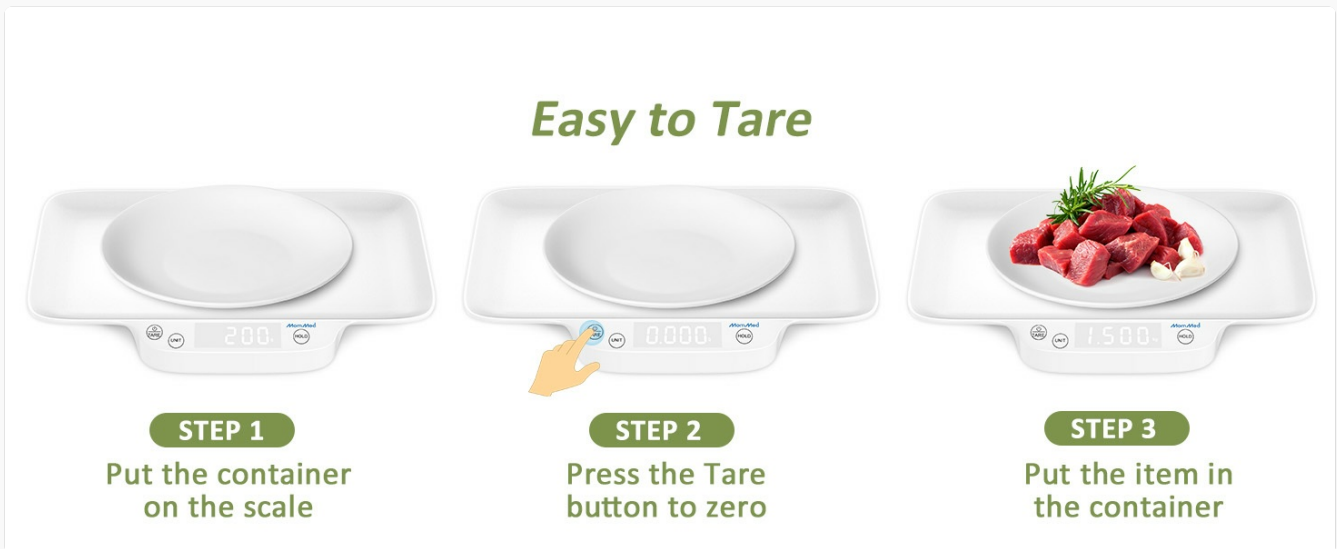


Image: Correct and incorrect placement of the scale for accurate weighing.

OPERATING INSTRUCTIONS

1. Power On/Off

Press the **TARE** button to turn the scale on. The LED display will illuminate. To turn off the scale, press and hold the **TARE** button for a few seconds, or it will automatically shut off after a period of inactivity to conserve battery life.

2. Unit Conversion

Press the **UNIT** button to cycle through the available weighing units: ounces (oz), pounds (lb), and kilograms (kg). Select the desired unit before weighing.

3. Tare Function

The TARE function allows you to zero out the weight of a container or blanket placed on the scale before weighing your pet. This ensures only the pet's weight is measured.

1. Place the empty container (e.g., a bowl, blanket) on the scale.
2. Wait for the display to stabilize.
3. Press the **TARE** button. The display will reset to zero.
4. Carefully place your pet into the container. The display will now show only the net weight of your pet.

4 Symmetrical anti-skid supports

more secure, more stable, more accurate



Powered by 2 AAA batteries

Image: Step-by-step guide for using the Tare function.

4. Hold Function

The HOLD function helps to get a stable reading even if your pet moves slightly on the scale. Press the **HOLD** button to activate this feature. The displayed weight will stabilize and lock, allowing you to record the measurement.

5. Important Usage Notes

- **Sensitive Panel:** The scale features a highly sensitive panel. Touch the buttons lightly. Pressing too hard on the buttons may cause the scale to tip over or affect accuracy.
- **Weight Limit:** The maximum weight capacity is 33lb (15kg). Do not exceed this limit.
- **Size Compatibility:** This scale is suitable for small animals with lengths less than 12.6 inches and widths less than 9.1 inches. For pets larger than the tray but under 33lb, consider placing them in a suitable container on the scale and using the tare function.



Image: A small kitten being weighed on the MomMed scale, illustrating suitable pet size.



Image: A large dog attempting to use the scale, indicating it is not suitable for large animals.

MAINTENANCE

1. Cleaning

The weighing tray is designed for easy cleaning. Wipe the surface with a soft, damp cloth. For stubborn dirt, a mild soap solution can be used. Ensure the scale is completely dry before storage or next use. Do not immerse the scale in water or use abrasive cleaners.

2. Storage

Store the scale in a dry place at room temperature. Avoid extreme temperatures, direct sunlight, and high humidity. Keep it away from strong electromagnetic fields.

TROUBLESHOOTING

Problem	Possible Cause	Solution
Inaccurate readings / Fluctuating weight	<ul style="list-style-type: none">• Scale on soft or uneven surface.• Pet moving excessively.• Exceeding weight limit.• Low battery.	<ul style="list-style-type: none">• Place scale on a hard, flat surface.• Use the HOLD function.• Ensure pet weight is within 33lb.• Replace batteries.
Scale does not turn on	<ul style="list-style-type: none">• Dead or incorrectly installed batteries.	<ul style="list-style-type: none">• Check battery polarity and ensure they are fresh.
Tare function not working correctly	<ul style="list-style-type: none">• Button pressed too hard, causing scale to tip.• Weight already on scale before taring.	<ul style="list-style-type: none">• Press the TARE button lightly.• Ensure scale is empty and stable before pressing TARE.
Display shows 'Lo'	<ul style="list-style-type: none">• Low battery indicator.	<ul style="list-style-type: none">• Replace the AAA batteries.

SPECIFICATIONS

Brand: MOMMED

Model: B0B255BM2S

Color: White

Recommended Uses: Pets (Newborn puppies, kittens, small animals)

Special Features: Hold Function, Tare Function, Strain Gauge

Display Type: LED (Backlit)

Weight Limit: 33 Pounds (15 kg)

Readout Accuracy: ± 0.006 pounds (3 grams)

Material: Acrylonitrile Butadiene Styrene (ABS)

Item Weight: 1.54 pounds

Product Dimensions (LxWxH): 13.77 x 10.23 x 1.65 inches

Tray Dimensions (approx.): 12.6 inches (length) x 9.1 inches (width)

Power Source: 2 x AAA Batteries

Auto Shut-off: Yes

WARRANTY AND SUPPORT

MomMed is committed to providing high-quality products and customer satisfaction. This product is supported by a 5-year customer service period after purchase.

For any questions, concerns, or technical assistance, please contact MomMed customer support. Refer to the product packaging or the MomMed official website for the most current contact information.

Note: No official product videos were embedded as the provided data did not include 'creator_type' information to verify 'Seller' as the creator, which is a required condition for embedding.