

Zendure ZDSBP1500

Zendure SuperBase Pro 1500 Portable Power Station User Manual

Model: ZDSBP1500 | Brand: Zendure

1. INTRODUCTION AND OVERVIEW

The Zendure SuperBase Pro 1500 is a high-capacity portable power station designed for versatile use, from emergency home backup to outdoor adventures. Featuring a 1440Wh LiFePO4 battery and 2000W AC output, it provides reliable power for a wide range of devices. This manual provides essential information for the safe and efficient operation of your SuperBase Pro 1500.



Figure 1.1: Zendure SuperBase Pro 1500 Portable Power Station, showcasing its compact design with wheels and handle.

Key Features:

- **1440Wh Capacity & 2000W AC Output:** Capable of powering up to 14 devices simultaneously with a surge capacity of 4000W.
- **Fast Recharging:** Achieves 0 to 75% charge in 1 hour and 100% in 2 hours via AC1800W input.
- **LiFePO4 Battery:** Offers a long life cycle of 3000 charges to 80% capacity, ensuring durability and safety.
- **Smart Connectivity:** Integrated 4G IoT, GPS, and Wi-Fi for remote monitoring and control via the Zendure app.
- **Portable Design:** Equipped with industrial-grade wheels and a telescopic aluminum handle for easy transport.
- **Uninterruptible Power Supply (UPS):** Provides seamless power transition in 13ms during outages to protect sensitive equipment.

2. SETUP AND INITIAL CHARGING

Before first use, ensure your SuperBase Pro 1500 is fully charged. Unpack the unit and place it on a stable, flat surface in a well-ventilated area.

Charging Methods:

The SuperBase Pro 1500 supports multiple charging methods:

- **AC Wall Outlet:** Connect the power station directly to a standard AC wall outlet using the provided cable. This

method supports up to 1800W input, allowing a full charge in approximately 2 hours.

- **Solar Panels:** Connect compatible solar panels (up to 1800W input) for eco-friendly charging.
- **Car Charger:** Charge from your vehicle's 12V car outlet.
- **Generator:** Connect to a compatible generator for charging.



Figure 2.1: Illustration of the five different ways to recharge the SuperBase Pro 1500, including AC, solar, car, and generator.

1800W Max AC Input



1800W Max Solar Input

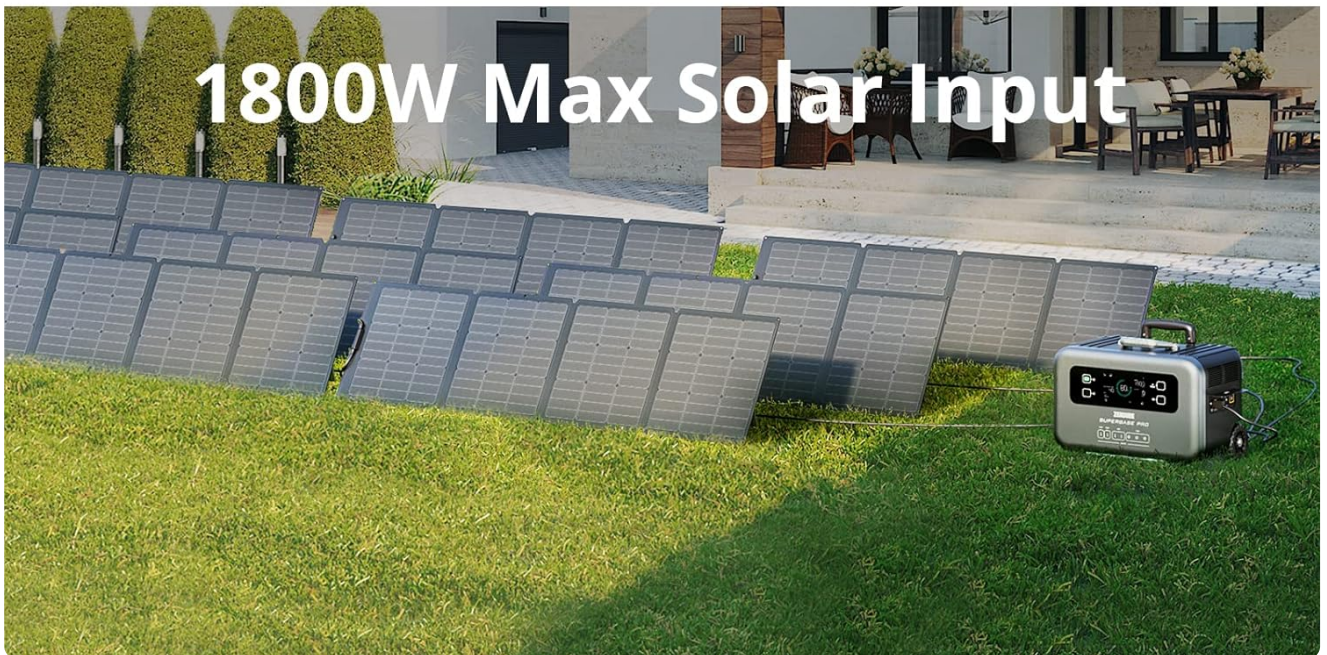


Figure 2.2: The SuperBase Pro 1500 connected to a wall outlet for AC charging, demonstrating its fast charging capability.

14 Ports with 1,440Wh Capacity 2000W (Peak 4000W) Output

Power All Most All Home Appliance



0.7-1.5H

Electric Skillet (1500W)



1-1.3H

Blender (1000W)



1.1-1.5H

Microwave (1000W)



7-15H

Fridge (150W)



44-53 Cups

Coffee Maker (600W)



0.6-3.4H

Hair Dryer (1600W)



22 recharges

MacBook 13" (61W)



1.3-1.7H

Washer (800W)



102 recharges

iPhone 12 (20W)



138 recharges

Camera (10W)

Figure 2.3: The SuperBase Pro 1500 connected to multiple solar panels for solar charging, ideal for off-grid use.

3. OPERATING INSTRUCTIONS

The SuperBase Pro 1500 is designed for intuitive operation. Familiarize yourself with the display and output ports before use.

Powering On/Off:

Press and hold the main power button on the display to turn the unit on or off. Individual AC and DC outputs can be toggled using their respective buttons.

Output Ports:

The unit features 14 output ports to accommodate various devices:

- **6 x AC Outlets:** 120V/2000W (AmpUp to 3000W) for household appliances.
- **4 x USB-C Outputs:** USB-C1/C2: 5-20V 100W; USB-C3/C4: 5-12V 20W Total.
- **1 x Car Output:** 13.6V/10A 136W.
- **3 x DC Outputs:** 13.6V/10A 136W.

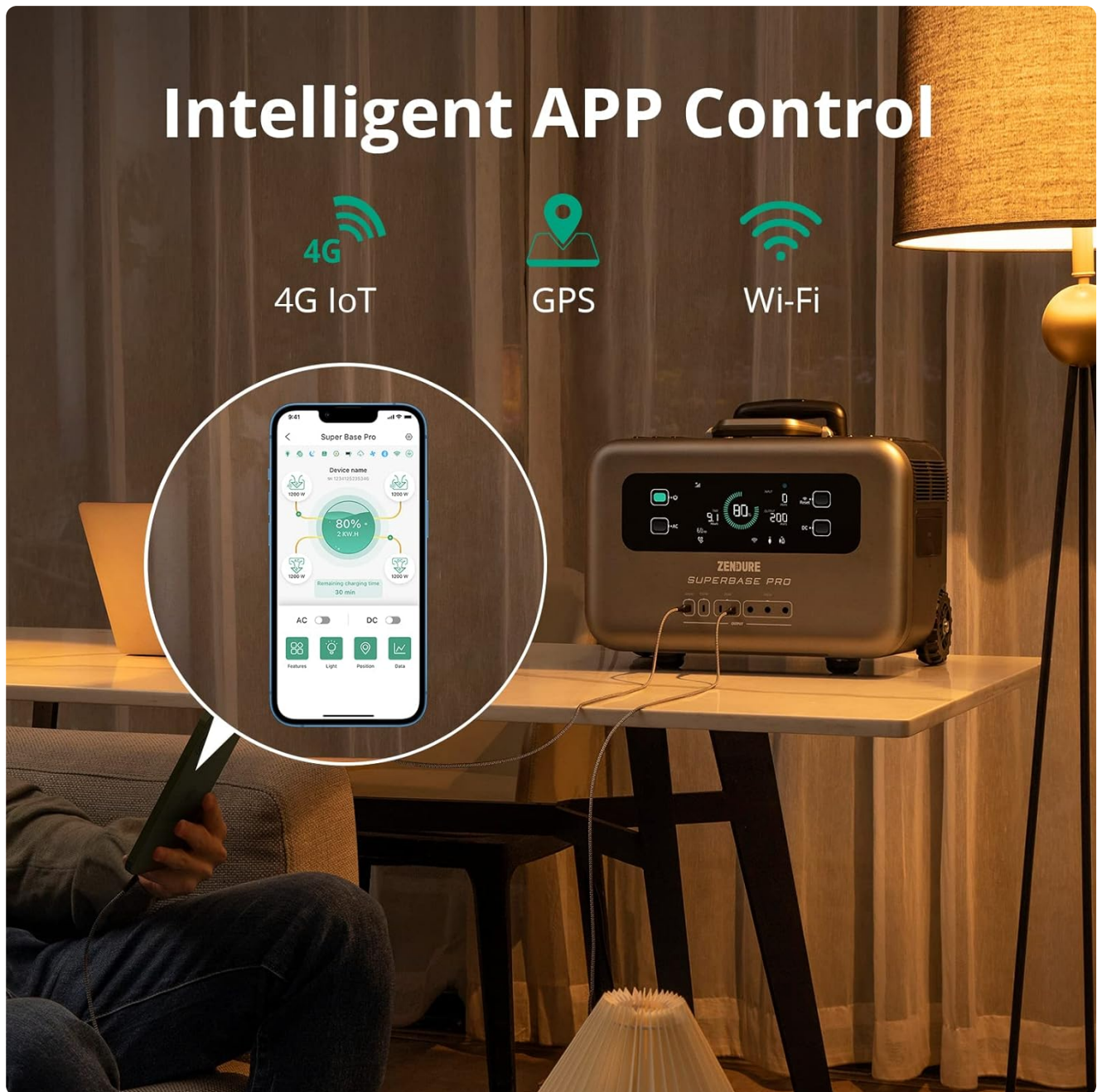
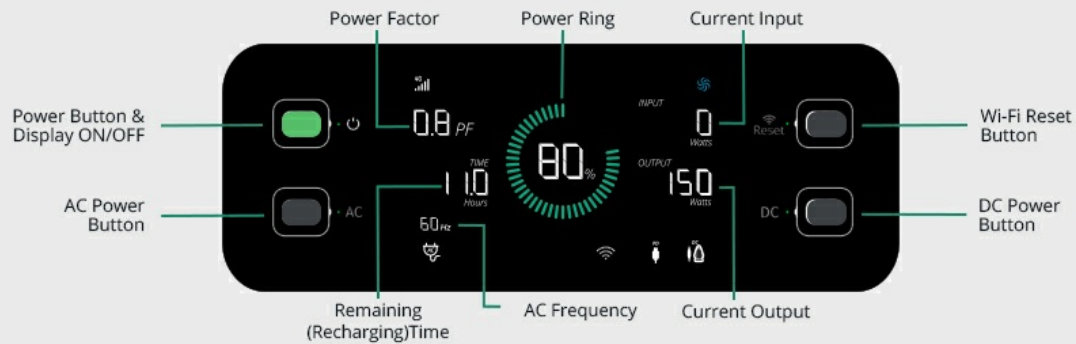


Figure 3.1: Detailed view of the SuperBase Pro 1500's 14 output ports, including AC, USB-C, car, and DC outputs.

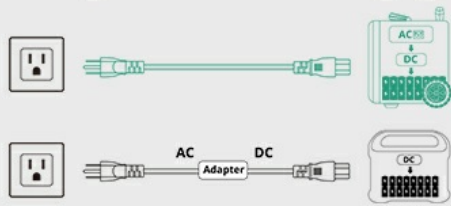
Intelligent Display:

The 6.1-inch clear display provides real-time information on power factor, power ring, current input/output, remaining time, AC frequency, and more.

6.1" Clear Display



Integrated AC Direct Charging



Solar Panel Charging Principle

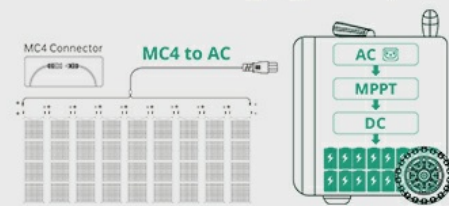


Figure 3.2: Close-up of the 6.1-inch intelligent display, showing various indicators like power factor, input/output wattage, and remaining battery life.

App Control & 4G IoT:

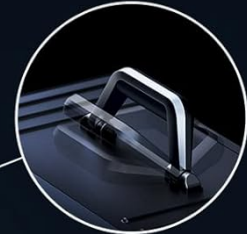
Download the Zendure app to control and monitor your power station remotely. The built-in 4G IoT hardware and GPS allow management even without Wi-Fi, providing features like low battery notifications and device tracking.

Portable, Fashionable and Durable

The best companion for outside



Aviation-grade Aluminum Telescopic Handle



Aviation-grade Aluminum Fixed Handle



Industrial-grade Wheels



Eco-friendly Coating

Figure 3.3: A smartphone displaying the Zendure app interface, demonstrating remote control capabilities for the power station.

Uninterruptible Power Supply (UPS) Function:

When connected to an AC input, the SuperBase Pro 1500 can act as a UPS. In the event of a power outage, it automatically switches to battery power within 13ms, protecting connected sensitive electronics from data loss or damage.

Awards & Certificate



reddot winner 2022



GOOD
DESIGN



Safety & Energy



ETL

UN38.8

UN38.8



RoHS



FCC

CA65

CA65



CEC

DOE

DOE

SDoC

SDOC



UL

Figure 3.4: Visual representation of the UPS function, showing power seamlessly switching to the SuperBase Pro 1500 during an outage.

4. MAINTENANCE AND CARE

Proper maintenance ensures the longevity and optimal performance of your SuperBase Pro 1500.

Battery Care:

The LiFePO4 battery is designed for 3000 charge cycles to 80% capacity. For best battery health, avoid prolonged storage at extremely low or high charge levels. Recharge the unit at least once every 3-6 months if not in regular use.

Cleaning:

Wipe the exterior with a soft, dry cloth. Do not use abrasive cleaners or immerse the unit in water. Keep the ventilation openings clear of dust and debris.

Storage:

Store the power station in a cool, dry place away from direct sunlight and extreme temperatures. Ensure it is adequately charged before long-term storage.

Safety Features:

The SuperBase Pro 1500 incorporates multiple safety technologies, including a Battery Management System (BMS), patented power management, intelligent temperature-activated fans, and solid craftsmanship to ensure safe operation.



Figure 4.1: Diagram illustrating the internal safety features of the SuperBase Pro 1500, including BMS and cooling systems.

5. TROUBLESHOOTING

This section addresses common issues you might encounter with your SuperBase Pro 1500.

Unit Not Powering On:

- Ensure the battery is not completely depleted. Connect to a power source and attempt to charge.
- Press and hold the main power button for a few seconds to ensure it registers.

Charging Issues:

- Verify that the charging cable is securely connected to both the power station and the power source.
- Check if the power source (wall outlet, solar panel, etc.) is functioning correctly.
- Ensure the ambient temperature is within the recommended charging range (typically 0°C to 40°C).

No Output from Ports:

- Ensure the individual AC or DC output buttons are activated.
- Check if the connected device is within the power station's output limits (2000W for AC, 3000W surge).
- Verify that the cables connecting your devices are not damaged.

If issues persist, please refer to the warranty and support section for contact information.

6. TECHNICAL SPECIFICATIONS

Feature	Specification
Model Name	ZDSBP1500
Capacity	1440Wh
AC Output	2000W (Surge 4000W)
Battery Type	LiFePO4 (Lithium Iron Phosphate)
Life Cycles	3000 cycles to 80%+ capacity
AC Input	1800W Max (Full charge in 2 hours)
Solar Input	1800W Max
Total Power Outlets	14
Dimensions (L x W x H)	17.6" x 10.9" x 13.9"
Item Weight	41.5 Pounds
Special Features	Movable trolley case design, UPS function, 4G IoT & App Control

7. WARRANTY AND SUPPORT

Zendure offers a comprehensive warranty and dedicated customer support for your SuperBase Pro 1500.

Warranty Information:

The Zendure SuperBase Pro 1500 comes with a standard **2-year warranty**. You can extend this warranty by an additional **1 year (total 3 years)** by downloading the Zendure app and registering as a Zendure member.

Customer Support:

For technical assistance, troubleshooting, or warranty claims, please contact Zendure customer service. Zendure provides 24-hour friendly service.

Visit the official Zendure store for more information and support resources: [Zendure Official Store](#)

