

Manuals+

[Q & A](#) | [Deep Search](#) | [Upload](#)

manuals.plus /

> [Fujifilm](#) /

> [Fujifilm Instax Mini Link 2 Smartphone Printer Instruction Manual - Clay White](#)

Fujifilm Instax Mini Link 2

Fujifilm Instax Mini Link 2 Smartphone Printer Instruction Manual

Model: Instax Mini Link 2

Brand: Fujifilm

1. OVERVIEW

The Fujifilm Instax Mini Link 2 is a compact smartphone printer designed for wireless connection to your smartphone. It enables users to print instant photos from their device and utilize creative features through the dedicated INSTAX MINI LINK App. This printer supports INSTAX MINI instant film, producing 2" x 3" prints.

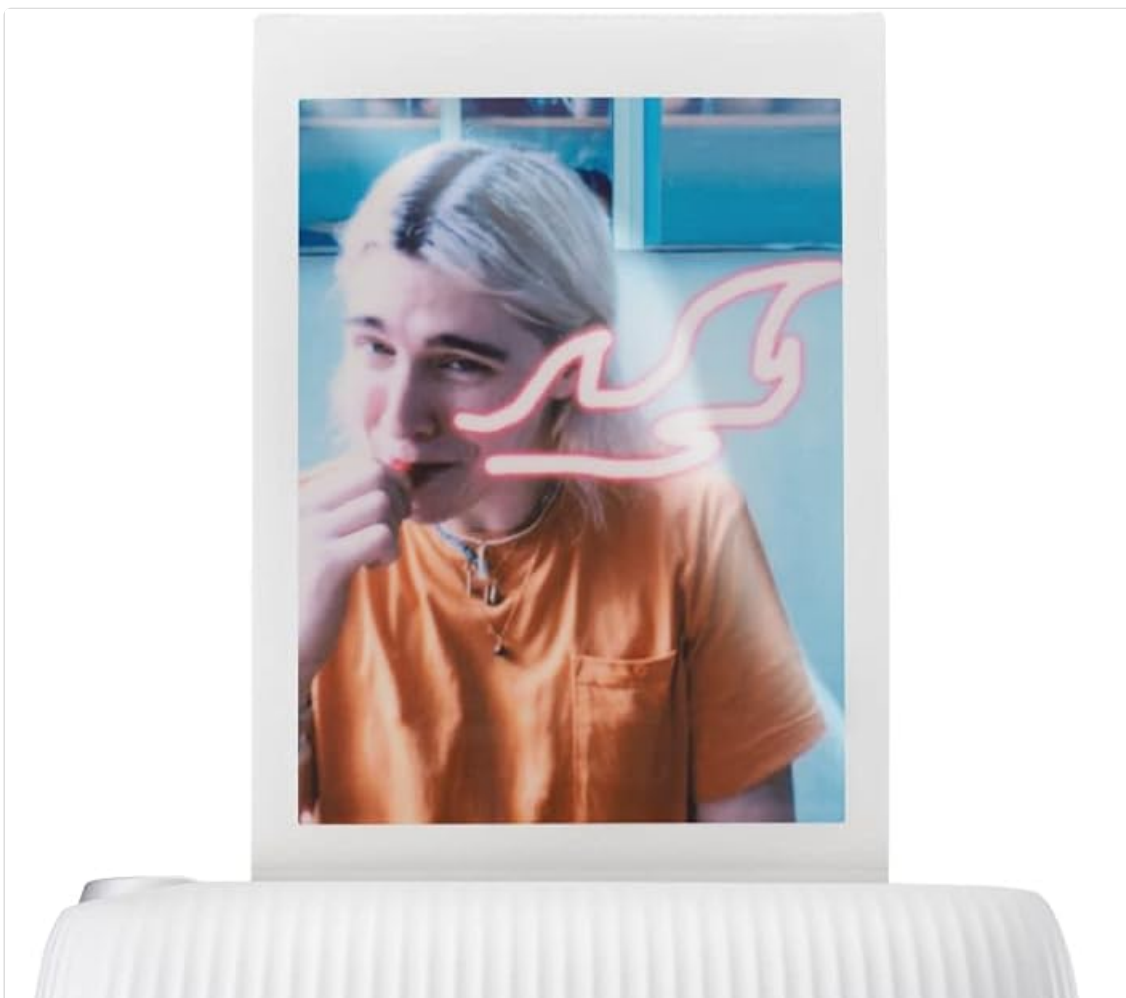




Figure 1: Fujifilm Instax Mini Link 2 Printer in Clay White.

2. PACKAGE CONTENTS

Verify that all items are present in the package:

- Instax Mini Link 2 Printer
- USB Charging Cable
- User Manual (this document)

Note: INSTAX MINI instant film is sold separately and is required for printing.

3. SETUP

3.1 Charging the Printer

Before initial use, fully charge the Instax Mini Link 2 printer using the provided USB cable. Connect the smaller end of the USB cable to the charging port on the side of the printer and the larger end to a USB power adapter (not included) or a computer's USB port. The LED indicator will show charging status.

3.2 Installing INSTAX MINI Film

To install film, open the film compartment cover located on the back of the printer. Insert a new pack of INSTAX MINI film, ensuring the yellow mark on the film cartridge aligns with the yellow mark inside the printer. Close the cover securely. The first dark sheet will eject automatically.

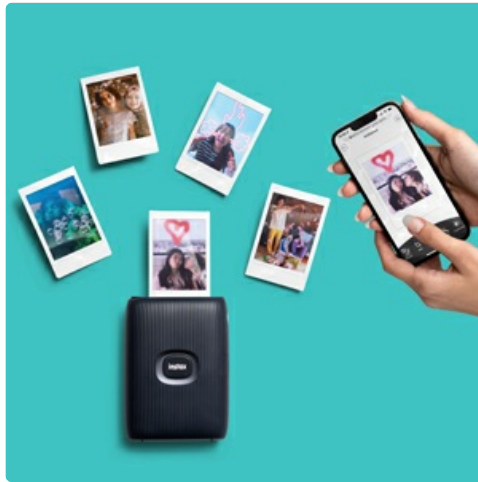


Figure 2: Correct insertion of INSTAX MINI film pack.

3.3 Downloading the INSTAX MINI LINK App

Download the free INSTAX MINI LINK App from your smartphone's app store. This app is essential for connecting to the printer and accessing all its features.

4. OPERATING INSTRUCTIONS

4.1 Connecting to Your Smartphone

1. Ensure your Instax Mini Link 2 printer is charged and powered on.
2. Enable Bluetooth on your smartphone.
3. Open the INSTAX MINI LINK App. The app will automatically search for and connect to your printer.
4. Once connected, the LED on the printer's power button will glow steadily.

4.2 Printing Photos

From the INSTAX MINI LINK App, select "Simple Print" to choose a photo from your smartphone's gallery. You can edit, crop, and apply filters before sending the image to the printer. Swipe up on the app screen or press the print button to initiate printing.



Figure 3: Preparing a photo for printing using the app.

4.3 INSTAXiR Feature

The INSTAXiR feature allows you to add creative effects to your photos by drawing in the air with the printer. Select the INSTAXiR mode in the app, then hold the printer and move it to draw virtual effects like bubbles, petals, or neon lines. These effects will be overlaid onto your chosen photo before printing.

Your browser does not support the video tag.

Video 1: Demonstration of the INSTAXiR feature for adding creative effects.

4.4 Print from Video

Select the "Print from Video" option in the app to choose a video from your smartphone. You can then select a specific frame from the video to print as an instant photo.

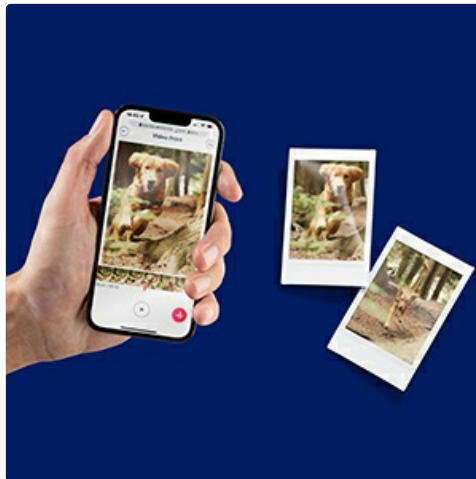


Figure 4: Selecting a frame from a video to print.

4.5 Match Test Feature

The "Match Test" feature allows you to compare two photos or analyze a single photo to generate a compatibility score or personality analysis. This can be a fun way to interact with your photos before printing.



Figure 5: Example of a Match Test printout.

5. MAINTENANCE

5.1 Cleaning the Printer

Wipe the exterior of the printer with a soft, dry cloth. Do not use alcohol, benzene, thinner, or other chemical cleaners. Keep the film ejection slot clear of dust and debris.

5.2 Film Storage

Store unused INSTAX MINI film in a cool, dry place away from direct sunlight and high temperatures. Once loaded, keep the film compartment closed to protect the film from light exposure.

6. TROUBLESHOOTING

Problem	Solution
Printer does not power on.	Ensure the printer is fully charged. Press and hold the power button for at least 1 second.
Cannot connect to smartphone via Bluetooth.	Verify Bluetooth is enabled on your smartphone and the printer. Restart both devices and try again. Ensure the INSTAX MINI LINK App is open.
Film does not eject or is jammed.	Do not force the film. Power off the printer, open the film compartment, and carefully remove any jammed film. Ensure film is correctly loaded.
Poor print quality (faded, discolored).	Check the film expiration date. Ensure the film is stored correctly. Avoid exposing prints to strong light immediately after ejection.

7. SPECIFICATIONS

Product Dimensions: 1.2"D x 3.6"W x 3.35"H

Item Weight: 7.4 ounces

Connectivity Technology: Bluetooth, USB

Printing Technology: Thermal

Maximum Media Size: 2 x 3 inches (INSTAX MINI film)

Maximum Color Print Resolution: 300 dpi

Max Input Sheet Capacity: 10 sheets

Compatible Devices: Smartphones (iOS, Android)

Power Source: 1 Lithium Ion battery (included)

Model Number: 600022532

UPC: 074101206234

8. WARRANTY AND SUPPORT

8.1 Product Warranty

The Fujifilm Instax Mini Link 2 Smartphone Printer includes a 1-year Limited Product Warranty. For detailed terms and conditions, please refer to the warranty information provided with your purchase or visit the official Fujifilm support website.

8.2 Customer Support

For further assistance, technical support, or inquiries regarding your product, please contact Fujifilm customer service. Contact information can typically be found on the Fujifilm website or in the product packaging.