

## Silkn FLM100PE1001

# Silkn LED Face Mask 100 User Manual

Model: FLM100PE1001

Brand: Silkn

## 1. PRODUCT OVERVIEW

The Silkn LED Face Mask 100 is an advanced skincare device designed to improve various skin concerns using targeted LED light therapy. This wireless mask features 100 LED lights and offers multiple light spectrums to address different skin needs.

### Key Features:

- **Multi-Spectrum LED Light:** Utilizes red, blue, yellow, and purple LED light to target specific skin issues.
- **Wireless Design:** Provides freedom of movement during sessions.
- **Automatic Mode:** Simplifies usage with pre-set session durations.
- **Compact and Lightweight:** Easy to wear and store.



Image 1.1: The Silk'n LED Face Mask 100, showing its flexible design and attached wired controller.



Image 1.2: The Silk'n LED Face Mask 100 displayed alongside its product packaging.

## 2. SAFETY INFORMATION

---

Please read all safety instructions carefully before using the device. Failure to follow these instructions may result in injury or damage to the product.

### Important Warnings:

- **WARNING! Risk of electric shock!** Always disconnect the product from the power source before cleaning.
- Do not use the device if you have a history of light-induced seizures or epilepsy.
- Consult a physician before use if you are pregnant, have a pacemaker, or any other medical condition.
- Do not look directly into the LED lights when the device is active.
- Keep out of reach of children.
- Do not use on broken, irritated, or infected skin.

### 3. SETUP INSTRUCTIONS

---

Follow these steps to prepare your Silk'n LED Face Mask for its first use.

1. **Unpack the Device:** Carefully remove the LED face mask, controller, USB cable, USB wall adapter, and elastic straps from the packaging.
2. **Charge the Mask:** Connect the USB cable to the mask's controller and the USB wall adapter. Plug the adapter into a power outlet. Allow the mask to fully charge before initial use. The charging indicator on the controller will show charging status.
3. **Attach Straps:** The mask comes with two small and two large elastic straps. Attach the appropriate straps to the designated slots on the mask to ensure a comfortable and secure fit on your face. The straps help keep the mask in place during treatment.
4. **Familiarize with Controller:** The controller has buttons for power, mode selection, and intensity adjustment. Refer to the operating section for detailed button functions.



Image 3.1: The Silk'n LED Face Mask laid flat, showing the connection point for the controller.

### 4. OPERATING INSTRUCTIONS

---

The Silk'n LED Face Mask 100 offers various light therapy modes for different skin benefits. Each session is automatically set for 15 minutes.

#### Light Therapy Modes:

- **Red Light:** Targets anti-aging, reduces fine lines and wrinkles, and boosts collagen production.
- **Blue Light:** Helps reduce acne-related redness and blemishes, and has anti-bacterial properties.
- **Yellow Light:** Addresses pigmentation spots and improves skin tone.
- **Purple Light:** Combats general skin blemishes and promotes overall skin health.



Image 4.1: Visual representation of the different LED light colors and their targeted skin benefits.

### Using the Mask:

1. **Prepare Your Skin:** Ensure your face is clean and dry before using the mask. Remove any makeup or skincare products that might block the light.
2. **Wear the Mask:** Place the mask comfortably on your face, securing it with the elastic straps.
3. **Power On:** Press and hold the power button on the controller to turn on the mask.
4. **Select Mode:** Use the mode selection button on the controller to cycle through the different LED light colors (Red, Blue, Yellow, Purple) or select the automatic mode.
5. **Begin Treatment:** The session will automatically run for 15 minutes. You can relax during this time.
6. **Power Off:** The mask will automatically turn off after 15 minutes. You can also manually turn it off by pressing and holding the power button.





Image 4.2: User demonstrating the red light therapy mode for collagen boosting and wrinkle reduction.

# Results in just 2 weeks



Session time  
of 10 min.

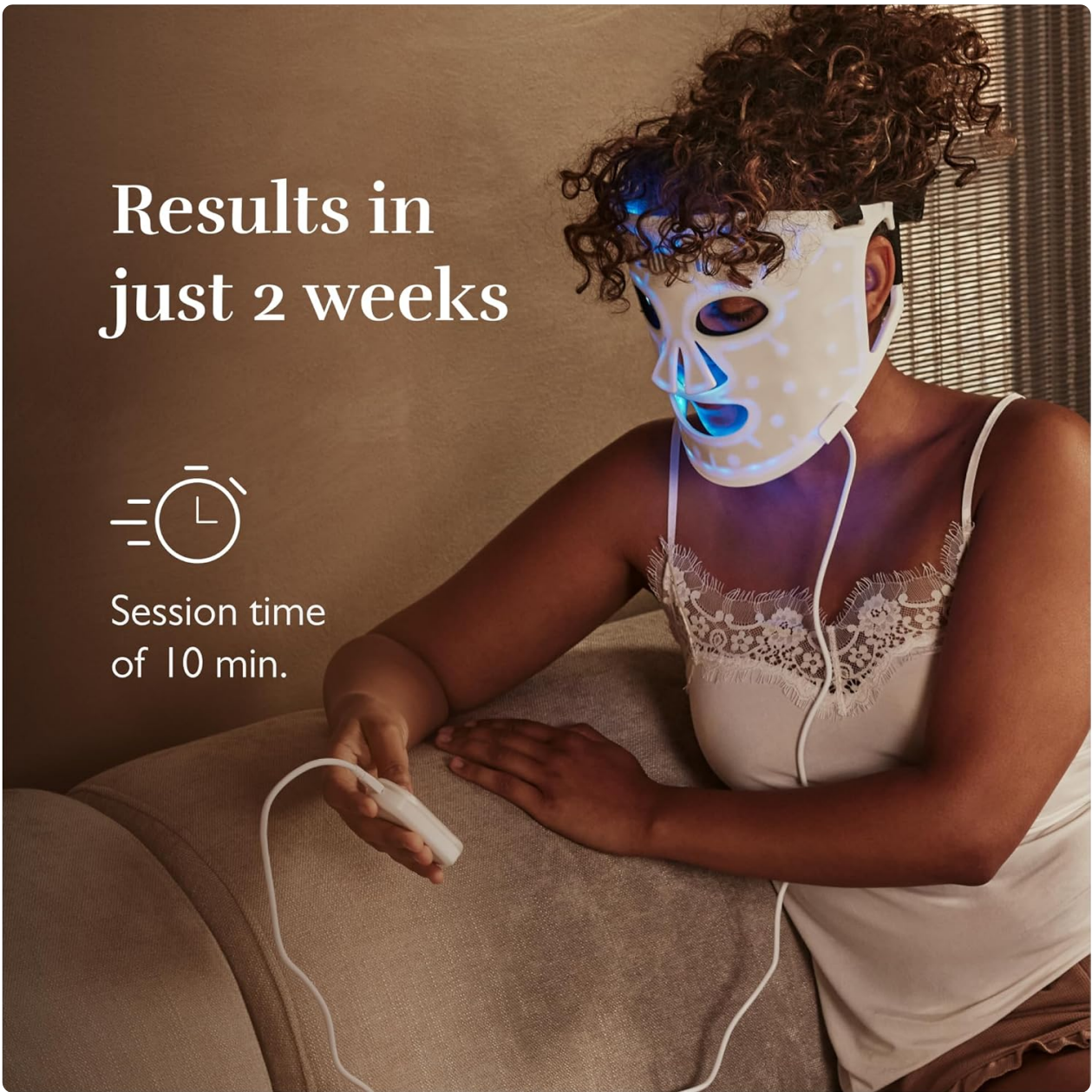


Image 4.3: User demonstrating the blue light therapy mode, highlighting potential results in two weeks with 10-minute sessions.



# High effectiveness



Irradiance between  
13.5 - 74.9 mW/cm<sup>2</sup>

LED light between  
425 - 622nm



Image 4.4: User demonstrating the purple light therapy mode, emphasizing the mask's high effectiveness.

## 5. MAINTENANCE

---

Proper care and maintenance will ensure the longevity and effectiveness of your Silkn LED Face Mask.

- **Cleaning:** Always disconnect the mask from the power source before cleaning. Wipe the mask gently with a soft, damp cloth. Do not use abrasive cleaners or immerse the mask in water.
- **Storage:** Store the mask in a cool, dry place, away from direct sunlight and extreme temperatures. Keep it in its original packaging or a protective case to prevent damage.
- **Battery Care:** To maintain battery health, avoid fully discharging the battery frequently. Charge the mask regularly, even if not in use for extended periods.



## 6. TROUBLESHOOTING

If you encounter any issues with your Silkn LED Face Mask, refer to the following common problems and solutions.

Problem	Possible Cause	Solution
Mask does not turn on.	Battery is low or depleted.	Charge the mask fully using the provided USB cable and wall adapter.
Lights are dim or flickering.	Low battery.	Recharge the mask.
Controller not responding.	Loose connection or controller malfunction.	Ensure the USB cable is securely connected to both the mask and the controller. If issues persist, contact customer support.
Skin irritation after use.	Overuse or sensitivity.	Reduce session frequency or duration. Discontinue use if irritation persists and consult a dermatologist.

If the problem persists after trying these solutions, please contact Silkn customer support.

## 7. SPECIFICATIONS

Brand	Silkn
Model Number	FLM100PE1001
Product Dimensions	38.3 x 19.8 x 3.4 cm
Item Weight	307 grams
Manufacturer	Invention Works BV
Series	LED Face Mask 100
Color	White
Batteries Included	No
Product Form	Mask
Product Benefits	Anti-aging
Scent	Unscented
Skin Type	Dry
Special Feature	Anti-aging

<b>Included Components</b>	1 x LED face mask, 1 x USB cable, 1 x controller, 2 x small elastic straps, 2 x large elastic straps, 1 x connector, 1 x USB wall adapter, 1 x instruction manual
<b>Number of Units</b>	1 Count
<b>Number of Items</b>	1
<b>Skin Tone</b>	All
<b>First Available Date</b>	June 9, 2024

## 8. WARRANTY AND SUPPORT

For warranty information and customer support, please refer to the documentation included with your product or visit the official Silkn website. Keep your proof of purchase for any warranty claims.

If you require further assistance or have questions not covered in this manual, please contact Silkn customer service through their official channels.