

## OREiN SL-1

# OREiN LED Flood Light Outdoor Motion Sensor

## USER MANUAL

### 1. Safety Information

---

Please read all safety instructions carefully before installation and operation. Failure to follow these instructions may result in electric shock, fire, or other hazards.

- Always turn off the power at the circuit breaker before installing or servicing the fixture.
- Installation must be performed by a qualified electrician or a person with knowledge of electrical wiring.
- Ensure the supply voltage is correct (120 Volts) before connecting the fixture.
- Do not attempt to modify the fixture. Any modifications may void the warranty and pose safety risks.
- This product is rated IP65 waterproof, suitable for outdoor use and resistant to dust and water jets. However, do not submerge the fixture in water.
- Avoid looking directly into the LED light source when the light is on, as it may cause eye strain or damage.

### 2. Product Overview

---

The OREiN LED Flood Light is an outdoor motion sensor security light designed for enhanced illumination and security around your home. It features a 450° wide adjustable design, allowing for flexible light direction, and offers three distinct operating modes to suit various needs.



Figure 2.1: OREiN LED Flood Light, showcasing its dual adjustable heads and integrated motion sensor.

### Key Features:

- **3 Operating Modes:** Security Mode, Day to Day Mode, and Manual Mode for versatile usage.
- **450° Wide Adjustable Lighting:** Patented design with 3 active joints for flexible adjustment of light heads, preventing light pollution and illuminating awkward corners.
- **Bright 5000K Spotlights:** Equipped with 12W (150W equivalent) high power LEDs, providing 1600 lumens of 5000K daylight white light for wide and far coverage.
- **Durable and IP65 Waterproof:** Constructed with upgraded LEDs and high-density ABS material, ensuring performance in various weather conditions and a 50,000-hour lifetime.
- **Enhanced Motion Sensor:** Reliable motion detection for security and convenience.

### What's in the Box:

- OREiN LED Flood Light Fixture
- LED Lens (integrated)
- Mounting Hardware

## 3. Installation

---

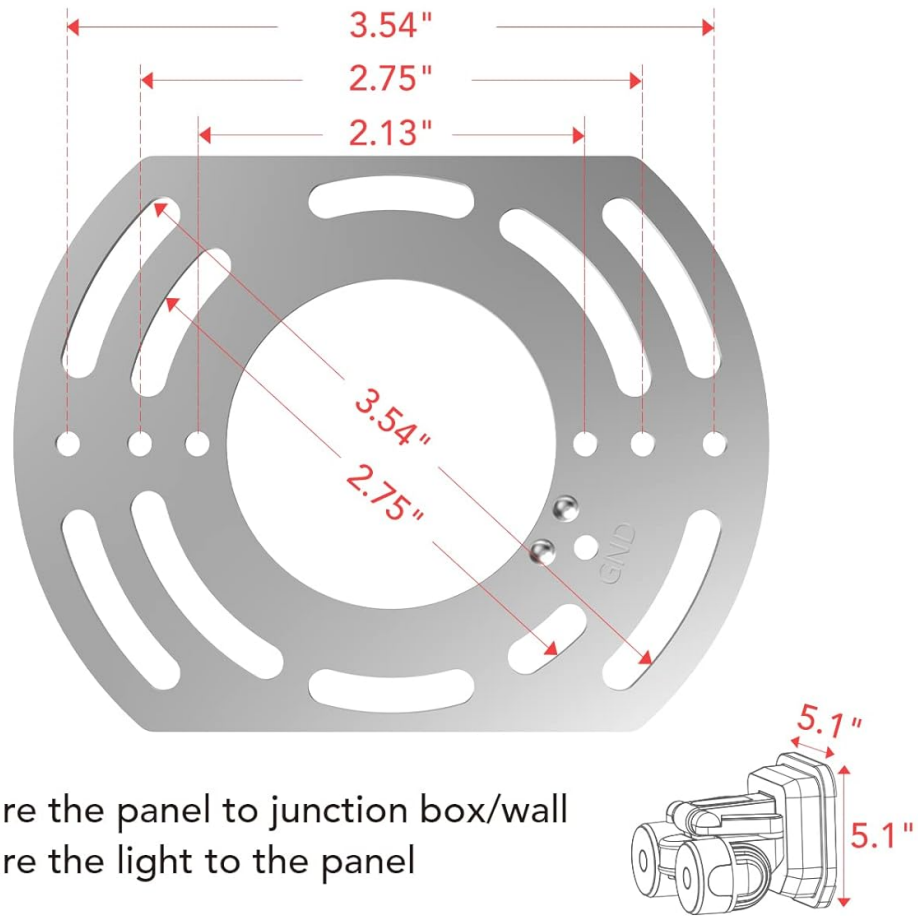
The OREiN LED Flood Light is designed for hardwired installation and requires connection to a standard junction box (not included). It supports both wall mounting and soffit mounting.

### Installation Steps:

1. **Prepare the Mounting Surface:** Ensure the power is off at the circuit breaker. Identify the location for installation, preferably a standard junction box.
2. **Fix the Bracket:** Secure the provided mounting bracket to the junction box or wall using the appropriate screws. The bracket dimensions are approximately 3.54 inches (9 cm) in diameter.

# Flexible Screwing for Installation

Electric Power, Not Battery or Solar



- Secure the panel to junction box/wall
- Secure the light to the panel

Figure 3.1: Mounting bracket dimensions and attachment to a junction box.

3. **Connect Wiring:** Connect the wires from the fixture to the corresponding wires in the junction box (e.g., black to black, white to white, ground to ground). Use wire nuts to secure connections.

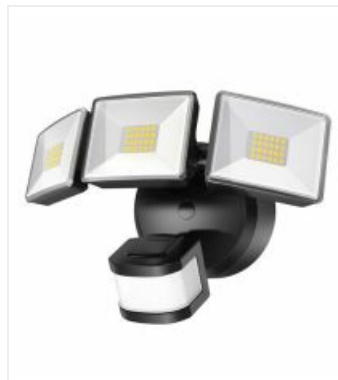


Figure 3.2: Wiring connections for hardwired installation.

4. **Mount the Light Fixture:** Align the fixture with the mounting bracket and secure it with screws. Ensure a tight and stable fit.
5. **Adjust Light Heads:** Once mounted, adjust the two light heads and the motion sensor to your desired angles. The fixture offers 450° of total adjustment.

# 450° Widely Light Adjustment

Support Single Head Adjusting



Figure 3.3: Flexible adjustment of light heads to avoid light pollution or illuminate specific areas.



# Soffit Ceiling Mount Friendly

No Angle Restrictions for Sensor



Figure 3.4: Soffit ceiling mount friendly design with no angle restrictions for the sensor.

6. **Restore Power:** Turn the power back on at the circuit breaker.

## 4. Operating Instructions

The OREiN LED Flood Light features an integrated red button for mode selection and control. The motion sensor has a detection range of 6.4-40 feet.

# Motion Activated



Figure 4.1: Motion activated lighting with a detection range of 6.4-40 feet.

## Red Button Setting Instructions:

1. **On/Off:** Long press the red button for 2 seconds to turn the light on or off.
2. **Switch Modes:** Single click the red button to cycle through the three operating modes. Observe the light's behavior to identify the current mode:
  - a. **Security Mode:** The light flashes twice slowly. In this mode, the motion sensor turns on the light to 100% brightness when motion is detected, and turns off when no motion is detected.





Figure 4.2: Security Mode operation (100% brightness on motion).

- b. **Day to Day Mode:** The light flashes twice quickly. In this mode, the light stays at 30% brightness when no motion is detected and switches to 100% brightness upon detecting motion.



Figure 4.3: Day to Day Mode operation (30% brightness, 100% on motion).

- c. **Manual Mode:** The light is fixed (no flashes). In this mode, the light turns on at night and stays on all night, controlled by a manual switch.

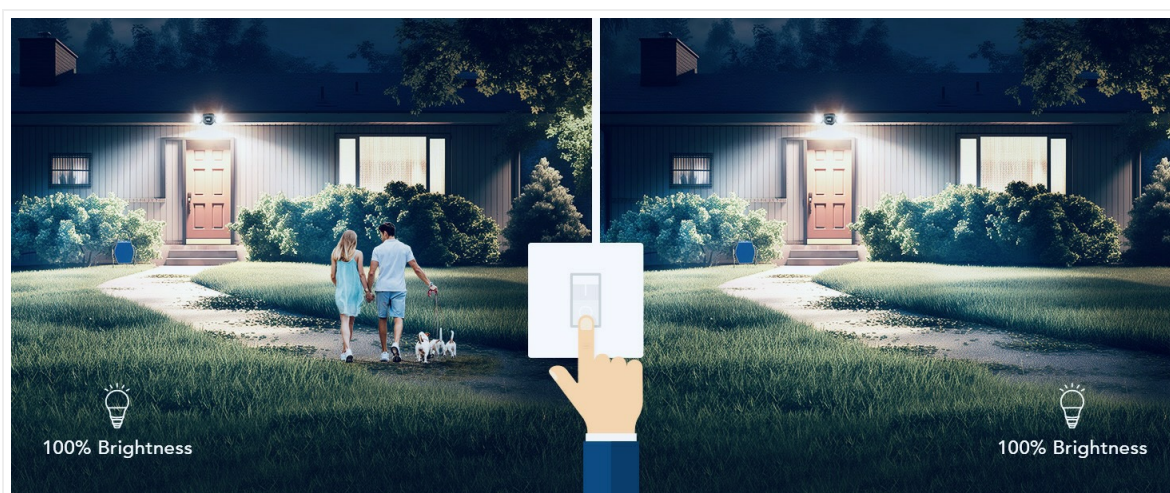


Figure 4.4: Manual Mode operation (controlled by external switch).

3. **Reset:** Long press the red button for 10 seconds to reset the light to its default settings.

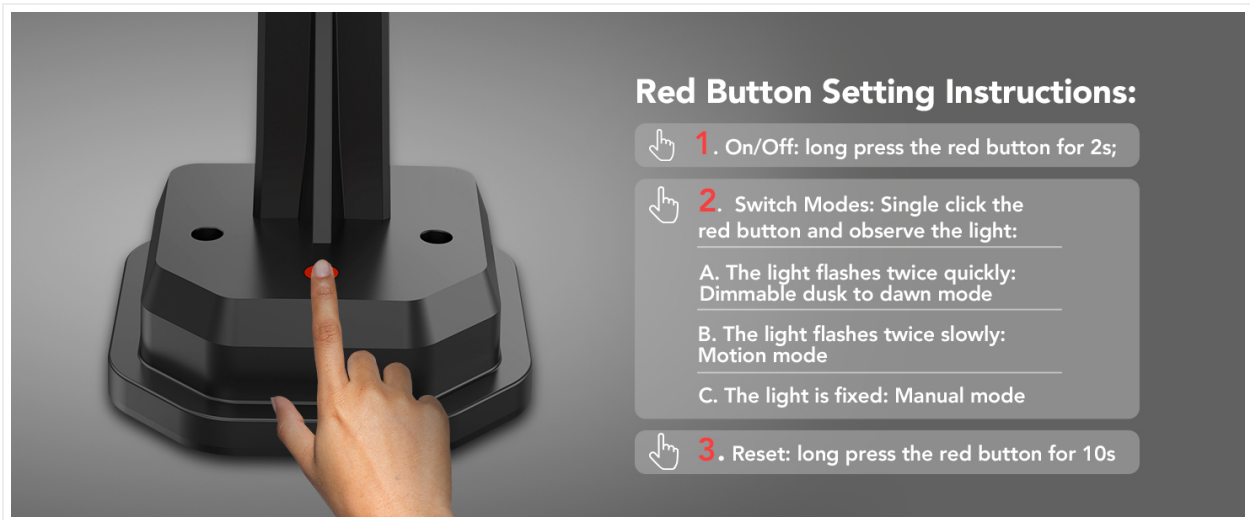


Figure 4.5: Red button functions for On/Off, Mode Switching, and Reset.

### Adjusting Light Direction:

The flood light features multiple adjustable joints on its light arms, allowing you to precisely direct the light where needed. This flexibility helps in avoiding light pollution to neighbors or illuminating specific areas like walkways or blind corners.



# | Light Wherever You Want

6 Adjustable Joints on Light Arms



Figure 4.6: Adjustable joints for precise light direction.

## 5. Maintenance

The OREiN LED Flood Light is designed for long-lasting performance with minimal maintenance. Its IP65 rating ensures protection against dust and water.



Figure 5.1: IP65 Waterproof design, suitable for various weather conditions.

- **Cleaning:** Periodically wipe the fixture with a soft, damp cloth to remove dust and debris. Do not use abrasive cleaners or solvents.
- **Inspection:** Regularly check the mounting and wiring for any signs of wear or damage. Ensure all connections remain secure.
- **Durability:** The fixture is built with high-density ABS material and upgraded LEDs, designed to resist heat, rust, and extreme weather, ensuring a long lifespan of approximately 50,000 hours.

## 6. Troubleshooting

If you encounter issues with your OREiN LED Flood Light, refer to the following common problems and solutions:

Problem	Possible Cause	Solution
Light stays on constantly (does not turn off or dim).	Incorrect mode setting (e.g., Manual Mode selected). Sensor sensitivity or ambient light sensor (LUX) setting.	<ul style="list-style-type: none"><li>• Single click the red button to cycle through modes and ensure Security Mode or Day to Day Mode is selected.</li><li>• Check the ambient light sensor (if adjustable) to ensure it's not set to keep the light on during daylight.</li><li>• Long press the red button for 10 seconds to reset the light to default settings, then reconfigure.</li></ul>
Light does not turn on when motion is detected.	Incorrect mode setting. Sensor obstruction or incorrect angle. Power supply issue.	<ul style="list-style-type: none"><li>• Ensure Security Mode or Day to Day Mode is active.</li><li>• Verify the motion sensor is not obstructed and is angled correctly to cover the desired area.</li><li>• Check power connections and circuit breaker.</li></ul>

Problem	Possible Cause	Solution
Motion sensor does not detect motion at close range or angles.	Sensor angle not optimized for close-range detection.	Adjust the motion sensor's angle downwards to improve close-range detection. The sensor has a 350° rotation capability.
Light flickers or is dim.	Loose wiring connection. Power fluctuation.	<ul style="list-style-type: none"><li>• Turn off power at the breaker and check all wiring connections for tightness.</li><li>• If the issue persists, consult a qualified electrician.</li></ul>

## 7. Specifications

Feature	Specification
Brand	OREiN
Model Name	OL36002440 (Item Model Number: SL-1)
Light Source Type	LED
Wattage	12 Watts (150W Equivalent)
Brightness	1600 Lumens
Color Temperature	5000 Kelvin (Daylight White)
Voltage	120 Volts
Material	Polycarbonate, Acrylonitrile Butadiene Styrene (ABS)
Color	Black
Product Dimensions	7"L x 5"W x 5"H (17.78 cm x 12.7 cm x 12.7 cm)
Item Weight	1.67 pounds (0.76 kg)
Water Resistance Level	IP65 Waterproof
Average Life	50,000 Hours
Installation Type	Wall Mounting and Soffit Mounting
Control Method	Push Button (on fixture)
Certifications	CE, FCC, RoHS

## 8. Warranty and Support

OREiN stands behind the quality of its products. Your LED Flood Light comes with a comprehensive warranty and dedicated customer support.

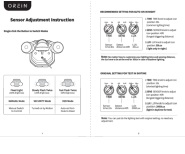

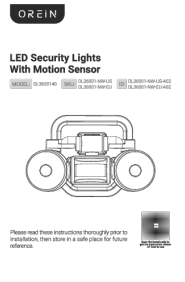

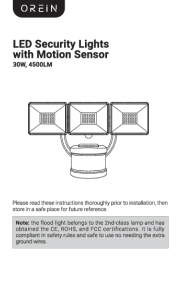
- **Warranty:** This product is covered by a **24-month warranty** from the date of purchase.
- **Customer Support:** For any questions, issues, or warranty claims, please contact OREiN customer service.



- **Online:** Contact us directly on Amazon.
- **General Inquiries:** Search for "OREiN" online to find our official contact information.
- **Return Policy:** Items purchased through Amazon can be returned via Amazon's logistics. We recommend contacting us before initiating a return for potential troubleshooting or assistance.

OREiN products are certified by FCC, CE, and ROHS, ensuring high quality standards and safety.

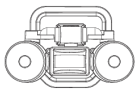
## Related Documents - SL-1

	<p><a href="#">OREIN Sensor Adjustment Instructions</a></p> <p>A guide to adjusting the settings for OREIN motion sensor outdoor lights, covering TIME, SENS, and LUX adjustments for various lighting modes.</p>
	<p><a href="#">OREiN Smart Motion Sensor Outdoor Lights OL36002440 Installation and User Manual</a></p> <p>Comprehensive guide for installing and operating the OREiN Smart Motion Sensor Outdoor Lights, Model OL36002440. Includes setup, sensor adjustments, modes, troubleshooting, and app connection instructions.</p>
	<p><a href="#">OREIN LED Security Lights with Motion Sensor: Installation and Operation Guide</a></p> <p>Detailed installation, setup, and troubleshooting guide for the OREIN LED Security Lights with Motion Sensor (Model OL3600140). Learn about sensor settings, operating modes, and product specifications.</p>
	<p><a href="#">OREIN Outdoor Smart Flood Light With Motion Sensor OL27002546 User Manual</a></p> <p>User manual for the OREIN Outdoor Smart Flood Light with Motion Sensor (Model OL27002546). Includes installation guide, sensor settings, modes description, troubleshooting, product specifications, and app connection instructions.</p>
	<p><a href="#">OREiN LED Security Lights with Motion Sensor: Installation and Operation Manual</a></p> <p>Comprehensive guide for installing and operating OREiN LED Security Lights with Motion Sensor (30W, 4500LM). Includes safety precautions, setup instructions, troubleshooting, and care tips.</p>

OREIN

LED Motion Sensor Outdoor Lights

OL3600140



Please read these instructions thoroughly prior to installation, then store in a safe place for future reference.



## [OREIN OL3600140 LED Motion Sensor Outdoor Lights: Installation and Operation Guide](#)

This guide provides detailed instructions for installing, operating, and maintaining the OREIN OL3600140 LED Motion Sensor Outdoor Lights. Learn about sensor settings, modes, troubleshooting, and product specifications.