

## Lowrance 000-15500-001

# Lowrance HOOK Reveal Series User Manual

Model: 000-15500-001 (5 Splitshot, C-map US Inland Maps)

## 1. INTRODUCTION

The Lowrance HOOK Reveal series fish finders are designed to enhance your fishing experience by providing advanced sonar technologies and detailed mapping capabilities. This manual provides essential information for setting up, operating, maintaining, and troubleshooting your HOOK Reveal unit.

## 2. SETUP GUIDE

### 2.1 Unboxing and Components

Upon opening your Lowrance HOOK Reveal package, ensure all components are present:

- Lowrance Hook Reveal 5 Splitshot US Inland Unit
- SplitShot Transducer
- Mounting Bracket and Hardware
- Power Cable
- Documentation (this manual)

### 2.2 Installation

Proper installation is crucial for optimal performance. Refer to the included installation guide for detailed instructions specific to your boat type and mounting location.

**Display Unit Installation:** Choose a location on your boat's console that provides clear visibility and easy access to controls. Ensure the mounting surface is stable and secure.

**Transducer Installation:** The SplitShot transducer should be mounted in a location that provides an unobstructed view of the water below the boat, free from turbulence caused by the hull or propeller. Common mounting locations include the transom or inside the hull (for shoot-through-hull transducers, if applicable to your model).



Figure 2.1: The Lowrance HOOK Reveal fish finder unit.

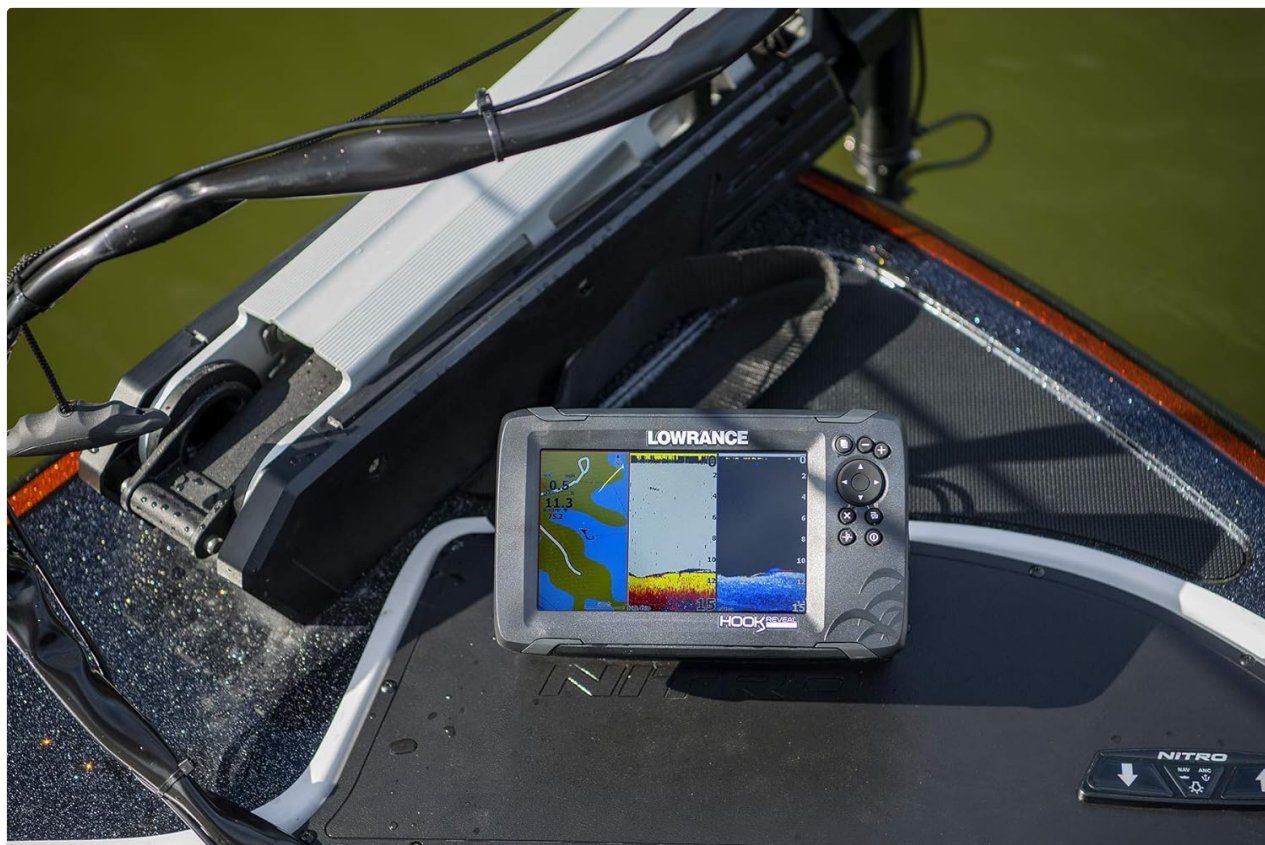


Figure 2.2: Lowrance HOOK Reveal unit mounted on a boat's console, showing its compact design.

### 3. OPERATING INSTRUCTIONS

The Lowrance HOOK Reveal is designed for ease of use with its intuitive menu operation and dedicated keypad. Familiarize yourself with the buttons and navigation to quickly access features.

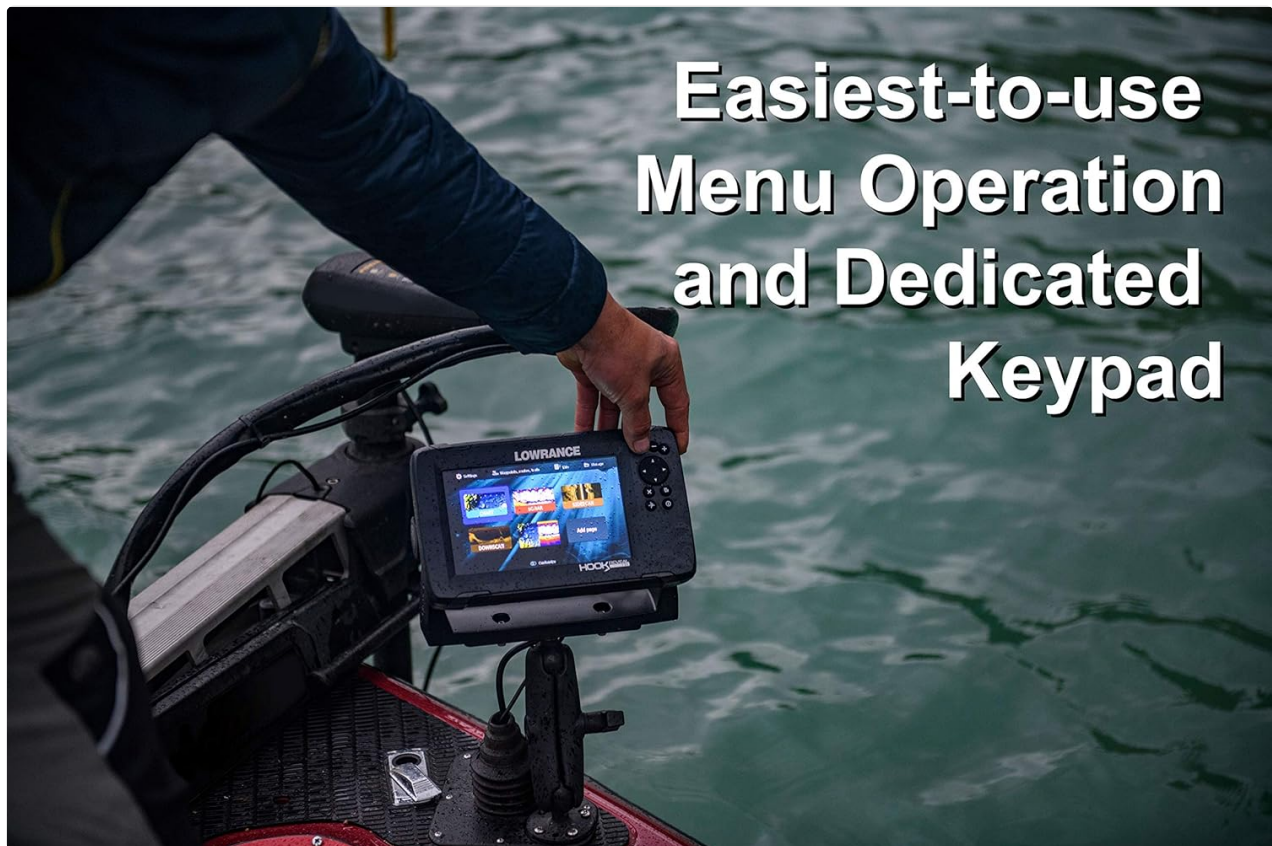


Figure 3.1: User interacting with the Lowrance HOOK Reveal menu, highlighting the ease of navigation.

#### 3.1 Key Features

- **FishReveal:** This feature combines the target separation of Lowrance CHIRP sonar with the high-resolution images of structure from DownScan Imaging. This makes fish targets light up on your display, making them easier to identify against structure.
- **High-Detail Inland Maps:** Your unit comes preloaded with high-detail maps of almost 4,000 US inland lakes. You can also create custom contour maps with even greater detail over any map or GPS plotter using Genesis Live, helping you find fish faster.
- **SplitShot Transducer:** Ideal for anglers seeking clear views below the boat, the SplitShot transducer offers wide-angle high CHIRP sonar for fish-finding and high-resolution DownScan Imaging for detailed views of fish-holding structures.
- **Autotuning Sonar:** The HOOK Reveal's autotuning sonar automatically adjusts settings as fishing conditions change, ensuring you always get the best sonar image without constant manual adjustments. This allows you to spend more time fishing.
- **5-inch SolarMAX Display:** The SolarMAX display provides crisp and clear views of your screen in all conditions, including direct sunlight, ensuring excellent clarity and daylight visibility.

#### 3.2 Sonar Operation

Your HOOK Reveal unit utilizes advanced sonar technologies to provide a clear picture of the underwater environment.

# CHIRP Sonar

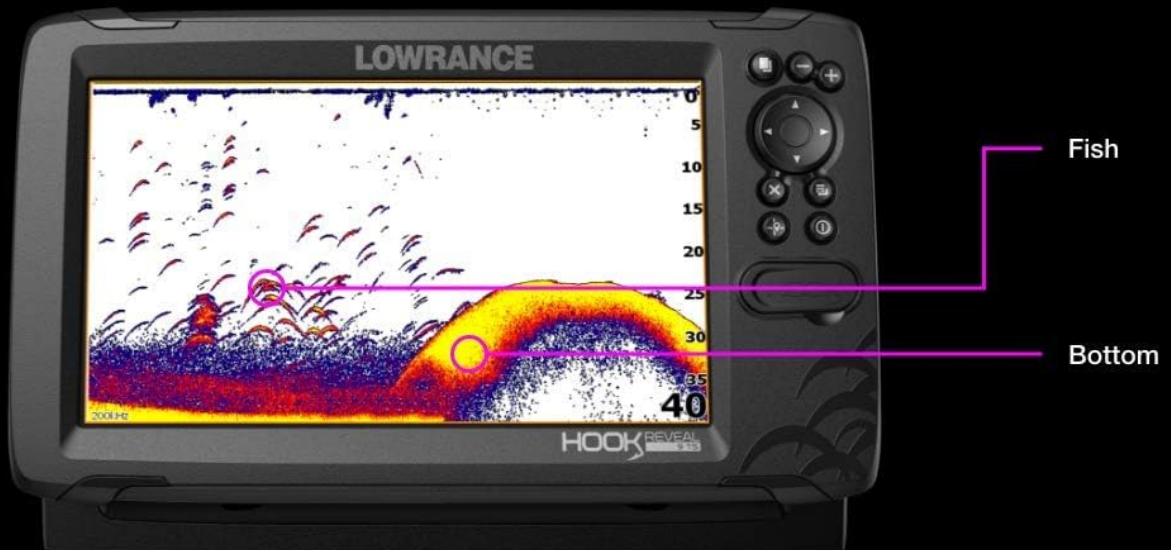


Figure 3.2: Example of CHIRP Sonar display showing fish arches and the bottom contour.

# FishReveal



Figure 3.3: Example of FishReveal display, clearly distinguishing fish from vegetation and the bottom structure.



Figure 3.4: Lowrance HOOK Reveal display showing a split-screen view, combining C-MAP navigation with real-time sonar data.

## 4. MAINTENANCE

Regular maintenance ensures the longevity and optimal performance of your Lowrance HOOK Reveal unit.

- **Cleaning:** Gently wipe the display screen with a soft, damp cloth. Avoid abrasive cleaners or solvents that could damage the screen coating. Clean the transducer regularly to remove marine growth or debris that can affect sonar performance.
- **Storage:** When not in use for extended periods, store the unit in a dry, cool place away from direct sunlight and extreme temperatures. Disconnect power cables to prevent battery drain.
- **Cable Inspection:** Periodically inspect all cables for signs of wear, cuts, or corrosion. Ensure connections are secure and free of moisture.

## 5. TROUBLESHOOTING

If you encounter issues with your HOOK Reveal unit, refer to the following common troubleshooting tips:

- **Unit Not Powering On:** Check all power connections. Ensure the battery is fully charged and providing sufficient voltage (12 Volt DC).
- **Inaccurate Depth Readings or Screen Noise:** This can often be caused by insufficient power. Verify your boat's battery voltage. A low or fluctuating voltage can lead to erratic behavior. Ensure the transducer is clean and free from obstructions or air bubbles.

- **Transducer Not Communicating:** Check the transducer cable for any damage and ensure it is securely plugged into the unit. If the issue persists, contact Lowrance support.
- **GPS Inaccuracy:** Ensure the unit has a clear view of the sky for satellite reception. Move away from tall structures or dense foliage that might block the signal.

For more complex issues, consult the full product manual available on the Lowrance website or contact customer support.

## 6. SPECIFICATIONS

Feature	Specification
Brand	Lowrance
Model Name	000-15500-001
Power Source	12 Volt DC
Screen Size	5 Inches
Display Type	LCD
Item Weight	0.9 Pounds
Product Dimensions (LxWxH)	9.02"L x 7.13"W x 7.52"H
Mounting Type	Flush Mount
Material	Plastic
Model Year	2020
Included Components	Lowrance Hook Reveal 5 Splitshot US Inland

## 7. WARRANTY & SUPPORT

### 7.1 Warranty Information

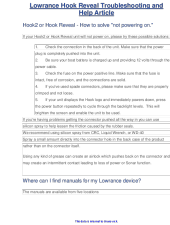

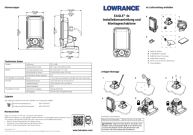

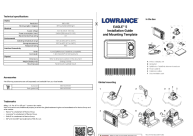

The Lowrance HOOK Reveal series typically comes with a **1-Year Limited Warranty** from the manufacturer. Please retain your proof of purchase for warranty claims. For specific terms and conditions, refer to the warranty documentation included with your product or visit the official Lowrance website.

### 7.2 Customer Support

For technical assistance, service, or additional product information, please contact Lowrance customer support. You can find contact details and support resources on the official Lowrance website:

[www.lowrance.com/support/](http://www.lowrance.com/support/)

## Related Documents - 000-15500-001

	<p><a href="#">Lowrance Hook Reveal Troubleshooting and Help Guide</a></p> <p>Comprehensive troubleshooting guide for Lowrance Hook2 and Hook Reveal marine electronics, covering common issues like powering problems, screen display errors, depth reading inaccuracies, and guidance on selecting the right transducer.</p>
	<p><a href="#">Lowrance Eagle Series Operator Manual</a></p> <p>Comprehensive operator manual for the Lowrance Eagle Series fishfinders, covering basic operation, customization, charts, navigation, sonar, structure mapping, alarms, tools, maintenance, and simulator functions.</p>
	<p><a href="#">Lowrance Eagle 4x Installation and Mounting Template</a></p> <p>Installation guide and mounting template for the Lowrance Eagle 4x fishfinder, including technical specifications, included accessories, and mounting instructions.</p>
	<p><a href="#">Lowrance HOOK Series Operation Manual</a></p> <p>This manual provides comprehensive instructions for operating the Lowrance HOOK Series fishfinders, including setup, basic operations, sonar functions, chart plotting, and system settings. Learn how to navigate menus, use advanced features, and optimize performance for various fishing conditions.</p>
	<p><a href="#">Lowrance Eagle 5 Installation Guide and Mounting Template</a></p> <p>This document provides installation instructions and a mounting template for the Lowrance Eagle 5 fishfinder/chartplotter. It includes technical specifications, in-the-box contents, mounting procedures, and accessory information.</p>
	<p><a href="#">Lowrance Elite-7 FAQ: Hybrid Dual Imaging, Transducers, and Networking</a></p> <p>Explore the Lowrance Elite-7 FAQ, covering Hybrid Dual Imaging (HDI) sonar technology, networking capabilities, transducer compatibility, and comparisons with other Lowrance models. Learn about HDI features, NMEA2000 connectivity, and available accessories.</p>

