

[Manuals.plus](#) /

> [Usmooth](#) /

> Usmooth Infinite Professional Styling Iron 2022 Model User Manual

Usmooth Infinite Professional Styling Iron 2022 Model

Usmooth Infinite Professional Styling Iron 2022 Model User Manual

Model: Infinite Professional Styling Iron 2022 Model

INTRODUCTION

Thank you for choosing the Usmooth Infinite Professional Styling Iron 2022 Model. This manual provides essential information for the safe and effective use of your styling iron. Please read it thoroughly before operation and retain it for future reference.





Image: The Usmooth Infinite Professional Styling Iron, showcasing its sleek design and ergonomic form.

SAFETY INFORMATION

WARNING: To reduce the risk of burns, electrocution, fire, or injury to persons:

- **Burn Hazard:** Surfaces get extremely hot during use. Avoid direct contact with skin, especially the scalp, ears, and neck. Allow the appliance to cool completely before handling or storing.
- **Electric Shock Risk:** Keep away from water. Do not use this appliance near bathtubs, showers, basins, or other vessels containing water. Never reach for an appliance that has fallen into water. Unplug immediately.
- **Fire Risk:** Unplug the appliance when not in use. Do not leave it unattended when plugged in. Do not place the appliance on any heat-sensitive surfaces while operating or cooling.
- **Children:** Keep out of reach of children. This appliance is not intended for use by children or persons with reduced physical, sensory, or mental capabilities unless supervised by an adult responsible for their safety.
- Do not operate any appliance with a damaged cord or plug, or if the appliance malfunctions or has been

dropped or damaged in any manner.

- Do not wrap the cord around the appliance.
- Ensure the voltage indicated on the appliance corresponds to your local mains voltage before connecting.

PRODUCT OVERVIEW

The Usmooth Infinite Professional Styling Iron is designed for versatile hair styling, allowing you to achieve smooth, curled, or waved hair with ease. Its innovative design eliminates the need for a traditional clamp.

Key Features:

- **Clamp-Free Styling:** Effortlessly style hair by sliding it between the plates.
- **Titanium Plates:** Provide even heat distribution for consistent results and crease-free styling.
- **Four Temperature Settings:** Adjustable heat for various hair types and styling needs (320°F, 355°F, 390°F, 430°F).
- **Lightweight & Ergonomic Design:** Ambidextrous design minimizes strain and fatigue during use.
- **60-Minute Auto Shut-Off:** Enhanced safety feature automatically turns off the iron after 60 minutes of inactivity.
- **360° Swivel Cord:** Tangle-free cord for flexible styling.
- **Bi-metal Thermostat Control System:** Shuts off if not in use or if temperature exceeds 465°F.

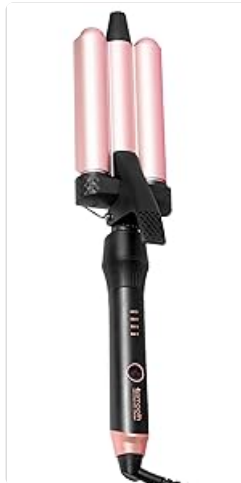


Image: A detailed diagram of the styling iron, pointing out key components such as the power switch, 4 temperature settings, ergonomic thumb grip, swivel cord, open-plated design, titanium plates, and crescent edge frame.



Image: The styling iron held in a hand, highlighting features like the 60-minute auto shut-off, titanium plates, and 360° swivel cord.



Image: Close-up of the styling iron's body, illustrating its lightweight, ergonomic, clamp-free design and no-slip grip for comfortable use.



Image: A view of the stationary plates, emphasizing the clamp-free design for easy hair insertion and styling.

SETUP

1. **Unpack:** Carefully remove the styling iron from its packaging. Ensure all components are present and undamaged.
2. **Placement:** Place the styling iron on a heat-resistant, flat surface away from water.
3. **Plug In:** Insert the power plug into a suitable electrical outlet.
4. **Power On:** Press and hold the power button (usually indicated by a power symbol) until the indicator light illuminates.
5. **Select Temperature:** Use the temperature control buttons to select your desired heat setting. Refer to the "Operating Instructions" section for guidance on temperature selection. Allow the iron a few moments to reach the selected temperature.

OPERATING INSTRUCTIONS

Always ensure hair is clean, dry, and free of tangles before styling. For best results and hair protection, apply a heat protectant spray.

Temperature Guide:

- **320°F (160°C):** For fine, delicate, or chemically treated hair.
- **355°F (180°C):** For normal or easy-to-style hair.
- **390°F (200°C):** For thick or wavy hair.
- **430°F (220°C):** For very thick, coarse, or hard-to-style hair.

1. Smoothing (Straightening)



Image: Step 1 of smoothing, showing a section of hair being placed between the styling iron's plates.

1. **Step 1:** Select a small section of hair. The size of the hair section will vary based on hair density. Slide the hair section between the plates. Ensure the hair slides between the plates without resistance.
2. **Step 2:** Gently press the plates together with your fingertips and immediately begin gliding the iron down the section of hair in one continuous motion, from root to tip.

Stationary Plates

Slide Hair Between
Plates For
Clamp-Free Styling

Twist & Gently Pull for Curls
Gently Pull for Straight



Image: Step 2 of smoothing, demonstrating the continuous glide of the styling iron down the hair section.

Repeat this process for each additional section until desired smoothness is achieved.

2. Curling

CURL

STEP 1



Select a section of hair and slide between plates.

Note: Size of hair section will vary upon hair density. Hair section should slide in between plates without resistance.

STEP 2



While holding the ends of the hair section with your opposite hand, rotate iron 1 1/2 turns and glide the iron down the section.

Release the ends of your hair right before the iron passes through the rest of the section.

STEP 3



Twirl the section in the same direction of the curl pattern.

Repeat process for each additional section.

For best results, allow hair to cool before manipulating the curls.

Image: Step 1 of curling, showing a section of hair being placed between the styling iron's plates.

1. **Step 1:** Select a section of hair. Slide the hair section between the plates.
2. **Step 2:** While holding the ends of the hair section with your opposite hand, rotate the iron 1 1/2 turns and glide it down the section. Release the ends of your hair right before the iron passes through the rest of the section.

SMOOTH

STEP 1



Select a section of hair and slide between plates.

Note: Size of hair section will vary upon hair density. Hair section should slide in between plates without resistance.

STEP 2



Gently press plates together with your finger tips and immediately begin gliding the iron down the section. Move the iron in one continuous motion all the way through the ends of the hair.

Repeat process for each Additional section.

Image: Step 2 of curling, demonstrating the rotation of the iron while gliding down the hair section.

3. **Step 3:** Twirl the section in the same direction of the curl pattern to set the curl.

WAVE

STEP 1



Select a section of hair and slide between plates.

Note: Size of hair section will vary upon hair density. Hair section should slide in between plates without resistance.

STEP 2



While holding ends of the hair section with your opposite hand, perform a rocking motion in opposite directions as you glide the iron down the section.

Each rotation should be approximately 180 degrees while moving in one continuous motion. Release the ends right before the iron passes through the rest of the section.

Repeat process for each additional section.

For best results, allow hair to cool before manipulating the waves.

STEP 3



Image: Step 3 of curling, showing the final twirl of the hair section to define the curl.

Repeat for each additional section. For best results, allow hair to cool before manipulating the curls.

3. Waving (Beach Waves)



usmooth
EVOLUTION OF STYLING

INFINITE STYLING IRON

Smooth
Curl, or
Wave

9'
Swivel
Cord

Titanium
Plates

Image: A three-step visual guide for creating waves. Step 1 shows hair inserted, Step 2 shows a rocking motion, and Step 3 shows

the iron gliding down.

1. **Step 1:** Select a section of hair. Slide the hair section between the plates.
2. **Step 2:** While holding the ends of the hair section with your opposite hand, perform a rocking motion in opposite directions as you glide the iron down the section. Each rotation should be approximately 180 degrees while moving in one continuous motion.
3. **Step 3:** Release the ends right before the iron passes through the rest of the section.

Repeat for each additional section. For best results, allow hair to cool before manipulating the waves.

MAINTENANCE

- **Cleaning:** Ensure the styling iron is unplugged and completely cool before cleaning. Wipe the plates and exterior with a soft, damp cloth. Do not use abrasive cleaners or immerse the appliance in water.
- **Storage:** Store the appliance in a cool, dry place, away from moisture. Do not wrap the power cord around the appliance, as this can damage the cord.
- **Cord Care:** Regularly inspect the power cord for any signs of damage. If the cord is damaged, discontinue use and contact customer support.

TROUBLESHOOTING

Problem	Possible Cause	Solution
Appliance does not turn on.	Not plugged in correctly; Power outlet malfunction; Appliance malfunction.	Ensure the plug is fully inserted. Test the outlet with another device. If still not working, contact customer support.
Appliance is not heating up.	Temperature setting too low; Appliance malfunction.	Increase the temperature setting. Allow sufficient time for heating. If problem persists, contact customer support.
Hair is snagging or pulling.	Hair is tangled; Section of hair is too large.	Ensure hair is thoroughly detangled before use. Use smaller sections of hair.
Appliance automatically shuts off.	60-minute auto shut-off activated; Overheating protection activated.	This is a safety feature. Turn the appliance back on if desired. If it shuts off frequently during use, ensure proper ventilation and contact support if issues persist.

SPECIFICATIONS

- **Model:** Infinite Professional Styling Iron 2022 Model
- **Brand:** Usmooth
- **Material:** Titanium plates
- **Color:** Black
- **Product Dimensions:** 11 x 1.5 x 1.5 inches
- **Weight:** 12 ounces
- **Temperature Settings:** 320°F, 355°F, 390°F, 430°F
- **Safety Features:** 60-minute auto shut-off, Bi-metal thermostat control system

- **Cord:** 9' Swivel Cord

WARRANTY AND SUPPORT

For warranty information and customer support, please refer to the documentation included with your purchase or visit the official Usmooth website. Keep your proof of purchase for any warranty claims.

Manufacturer: Usmooth

Contact: Please visit the [Usmooth Store on Amazon](#) or their official website for support and contact information.