

SteelSeries 64842

SteelSeries Apex Pro Mini Wireless Keyboard Instruction Manual

Model: 64842

1. INTRODUCTION

This manual provides detailed instructions for the setup, operation, and maintenance of your SteelSeries Apex Pro Mini Wireless Keyboard. This keyboard features OmniPoint 2.0 Adjustable HyperMagnetic Switches, Quantum 2.0 Wireless connectivity, and a compact 60% form factor, designed for high-performance use.



Image: The SteelSeries Apex Pro Mini Wireless Keyboard showcasing its compact design and customizable RGB backlighting.

2. WHAT'S IN THE BOX

Verify that all items are present upon unboxing:

- SteelSeries Apex Pro Mini Wireless Keyboard
- USB Cable (Detachable USB-C)
- Wireless Dongle (USB-C)
- USB-A to USB-C Adapter (for dongle)



Image: The Apex Pro Mini Wireless Keyboard positioned on a desk alongside a gaming mouse, highlighting its compact size and suitability for gaming setups.

3. SETUP

3.1 Wired Connection

1. Connect the USB-C end of the provided cable to the port on the keyboard.
2. Connect the USB-A end of the cable to an available USB port on your computer.
3. The keyboard will automatically be detected and drivers installed.

3.2 Wireless Connection (Quantum 2.0 Wireless)

1. Locate the USB-C wireless dongle and the USB-A to USB-C adapter.
2. Insert the USB-C wireless dongle into the USB-A to USB-C adapter.

3. Plug the adapter with the dongle into an available USB-A port on your computer.
4. Ensure the keyboard's power switch (usually on the back or side) is set to wireless mode.
5. The keyboard should automatically pair with the dongle.

3.3 Bluetooth 5.0 Connection

1. Ensure your computer has Bluetooth 5.0 capability.
2. Set the keyboard's power switch to Bluetooth mode.
3. On your computer, navigate to Bluetooth settings and initiate a device search.
4. Select "SteelSeries Apex Pro Mini Wireless" from the list of available devices to pair.



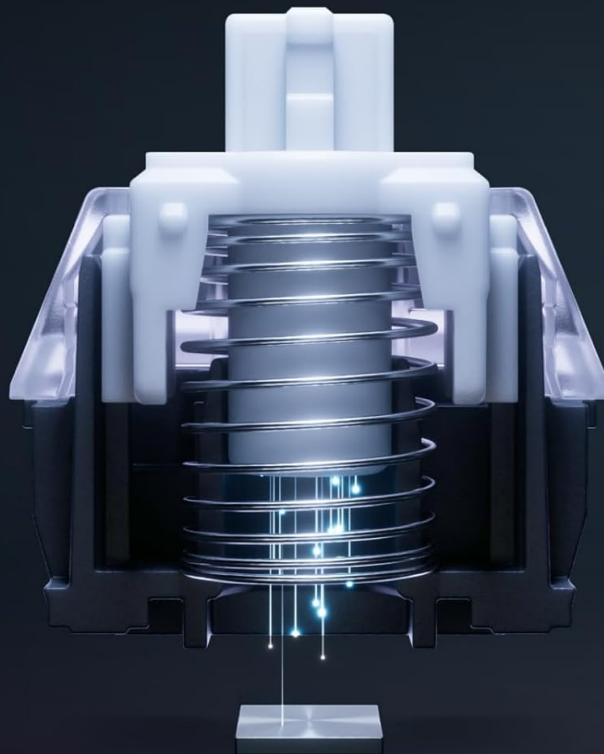
Image: The keyboard displaying its Quantum 2.0 Dual Wireless capabilities, including 2.4GHz and Bluetooth 5.0 for flexible connectivity.

4. OPERATING THE KEYBOARD

4.1 OmniPoint 2.0 Adjustable HyperMagnetic Switches

The Apex Pro Mini features OmniPoint 2.0 switches, allowing for precise customization of actuation points. This technology enables faster response times and greater control.

OMNIPOINT 2.0 ADJUSTABLE HYPERMAGNETIC SWITCHES



20X FASTER ACTUATION
11X FASTER RESPONSE TIME*

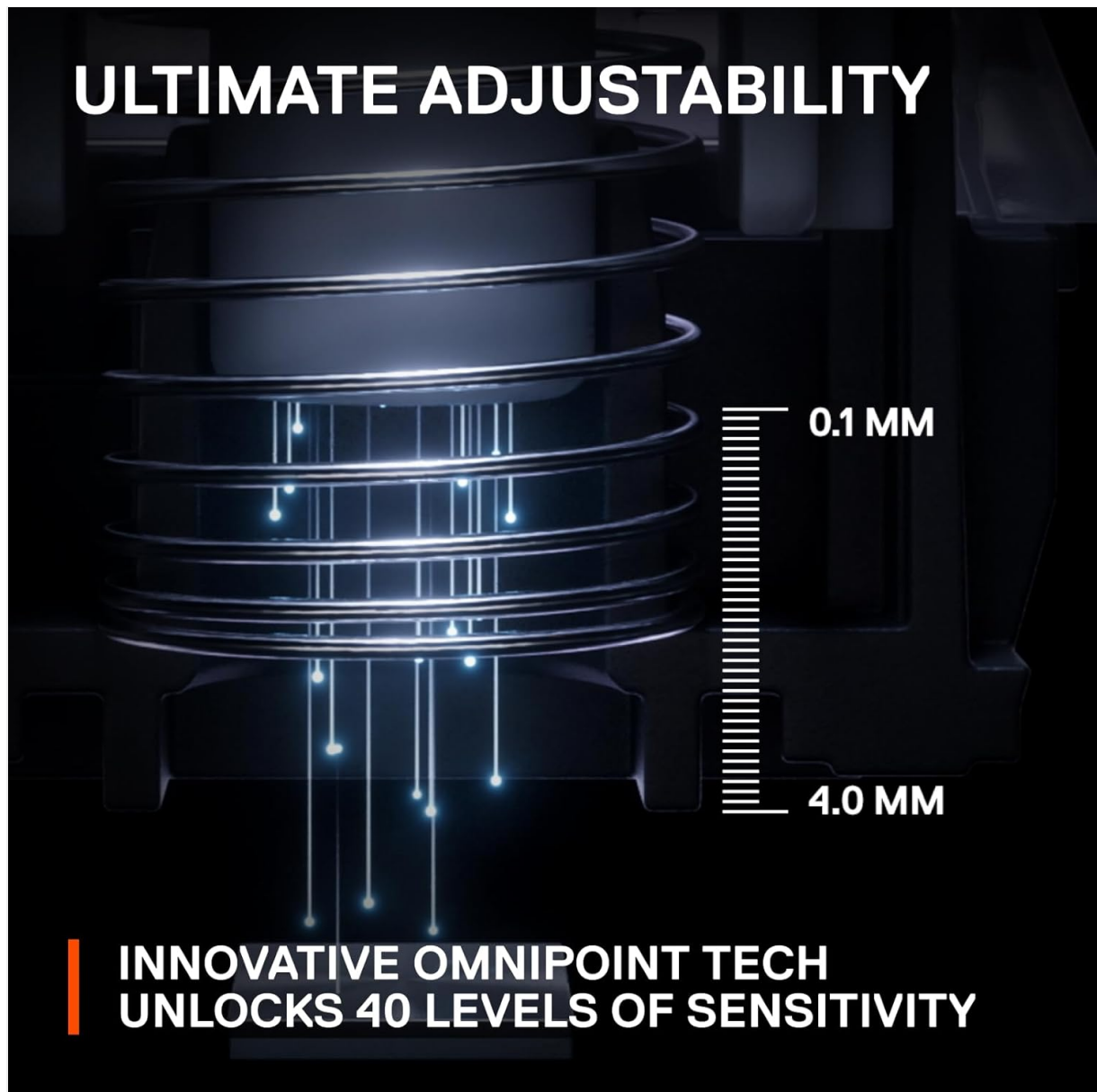
*Compared to conventional mechanical keyboards

Image: A detailed diagram illustrating the internal mechanism of an OmniPoint 2.0 Adjustable HyperMagnetic Switch, emphasizing its magnetic actuation for speed and precision.

4.2 Actuation Point Adjustment

Each key's actuation point can be adjusted from 0.1mm to 4.0mm, offering 40 levels of sensitivity. This allows users to set keys for ultra-fast, light touches or deeper presses to prevent accidental activations.

ULTIMATE ADJUSTABILITY



**INNOVATIVE OMNIPOINT TECH
UNLOCKS 40 LEVELS OF SENSITIVITY**

Image: A visual representation of the actuation range, demonstrating the 0.1mm to 4.0mm adjustability of the OmniPoint switches.

4.3 Rapid Trigger

Rapid Trigger technology eliminates latency by dynamically activating and deactivating keys based on travel distance, rather than a fixed point. This results in quicker actuation and faster response times.

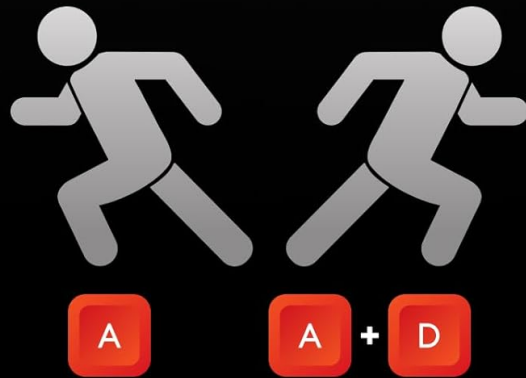
Rapid Tap

Faster input and improved aim

STANDARD



RAPID TAP **ON**



Prioritize the last key press between two keys for enhanced responsiveness in FPS Games.

Image: A diagram illustrating the concept of Rapid Tap, showing how it enables faster input and improved aim by prioritizing the last key press between two keys.

4.4 2-in-1 Action Keys

Program two distinct actions to a single key based on the press depth. For example, a light touch could initiate walking, while a deeper press could trigger sprinting.

5. CUSTOMIZATION AND SOFTWARE

The SteelSeries GG software allows for comprehensive customization of your keyboard, including key bindings, actuation settings, dual actuation, meta bindings, and OLED display settings.

5.1 SteelSeries GG Software

Download and install the SteelSeries GG software from the official SteelSeries website. This software provides a graphical interface to manage all keyboard settings, including:

- **Key Bindings:** Reassign keys or create macros.
- **Actuation:** Adjust the actuation point for individual keys or groups of keys.
- **Dual Actuation:** Configure 2-in-1 Action Keys.
- **RGB Lighting:** Customize per-key RGB lighting effects and patterns.

- **OLED Display:** Personalize the OLED screen with images, GIFs, or system information.

5.2 On-Keyboard Controls (OLED Display)

The integrated OLED Smart Display and clickable metal roller allow for on-the-fly adjustments without software. You can navigate menus to change settings such as actuation, profiles, and brightness directly from the keyboard.

Your browser does not support the video tag.

Video: Official product video showcasing the SteelSeries Apex Pro Mini Wireless Compact Gaming Keyboard, highlighting its features and design.

6. SPECIFICATIONS

Brand	SteelSeries
Model Number	64842
Connectivity Technology	Wired (USB-C), Wireless (2.4GHz Quantum 2.0, Bluetooth 5.0)
Keyboard Description	Mechanical, Gaming
Switch Type	OmniPoint 2.0 Adjustable HyperMagnetic Switches
Actuation Range	0.1mm to 4.0mm (40 levels)
Form Factor	60%
Keycaps	Double Shot PBT
Top Plate Material	Premium Aircraft-Grade Aluminum
Backlighting	Per-key RGB
Operating System	Windows 10 (and newer)
Item Weight	2.42 pounds
Product Dimensions	11.5 x 4 x 1.6 inches
Batteries	1 Lithium Ion battery required (included)

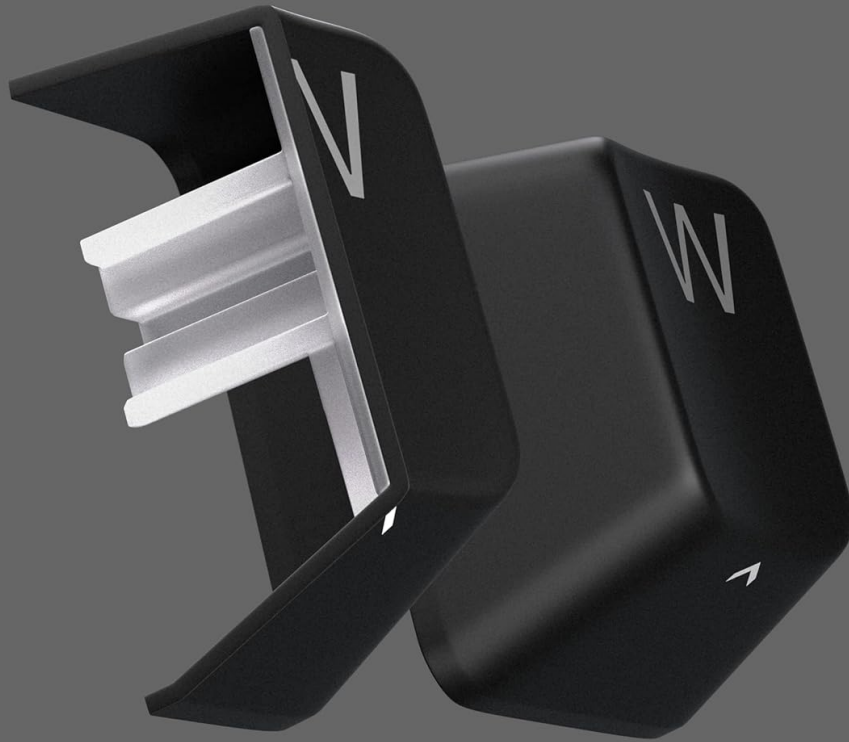
ABSOLUTE DURABILITY



PREMIUM AIRCRAFT-GRADE ALUMINUM TOP PLATE

Image: An exploded view of the keyboard, highlighting the premium aircraft-grade aluminum top plate for enhanced durability.

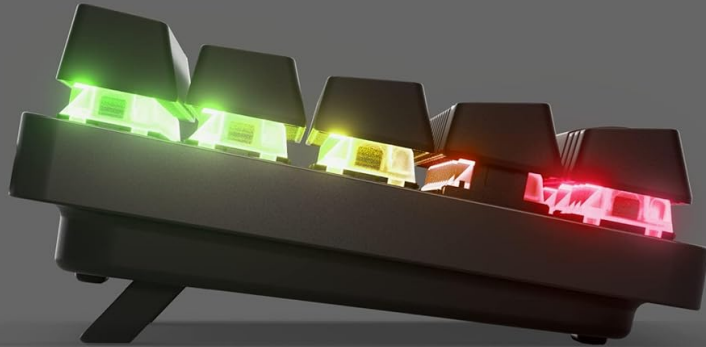
DOUBLESHOT PBT KEYCAPS



**FADEPROOF BUILD WITH FULLSIZE
KEYBOARD SIDE-PRINTED FUNCTIONS**

Image: A close-up view of the Doubleshot PBT keycaps, illustrating their fade-proof build and side-printed functions.

ADJUSTABLE TILT LEGS



THREE ERGONOMIC OPTIONS: FLAT, HALF, AND FULL EXTENSION

Image: The keyboard shown with its adjustable tilt legs, offering three ergonomic options: flat, half, and full extension.

7. MAINTENANCE

7.1 Cleaning

- Use a soft, dry cloth to wipe down the keyboard surface regularly.
- For dust and debris between keycaps, use compressed air.
- To clean under keycaps, carefully remove them using a keycap puller (not included) and wipe the switches and plate.
- Avoid using harsh chemicals or abrasive materials.

7.2 Battery Care (Wireless Models)

- Charge the keyboard fully before first use.
- Avoid completely draining the battery frequently to prolong its lifespan.
- Store the keyboard in a cool, dry place when not in use for extended periods.

8. TROUBLESHOOTING

- **Keyboard not responding:** Ensure the USB cable is securely connected or the wireless dongle is properly inserted and the keyboard is powered on and in the correct mode (2.4GHz or Bluetooth). Try a different USB port.
- **Keys not registering:** Check actuation settings in SteelSeries GG software. Ensure no debris is under the keycap.
- **Wireless connectivity issues:** Move the dongle closer to the keyboard. Ensure no strong interference sources (e.g., other wireless devices) are nearby. Re-pair the keyboard if necessary.
- **RGB lighting not working:** Verify lighting settings in SteelSeries GG software. Ensure the keyboard firmware is up to date.


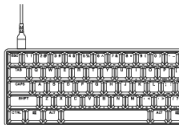
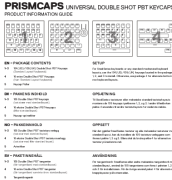

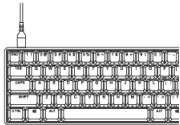
9. WARRANTY AND SUPPORT

For warranty information, technical support, and additional resources, please visit the official SteelSeries support website. Keep your proof of purchase for warranty claims.

Online Support: steelseries.com/support

© 2023 SteelSeries. All rights reserved.

Related Documents - 64842

  APEX PRO MINI PRODUCT INFORMATION GUIDE	<p>SteelSeries Apex Pro Mini Gaming Keyboard: Product Information Guide</p> <p>A comprehensive guide to the SteelSeries Apex Pro Mini gaming keyboard, covering package contents, system compatibility, software features, product overview, setup instructions, functions, and regulatory information. Learn how to customize lighting, macros, and key actuation.</p>
 PRISMCAPS UNIVERSAL DOUBLE SHOT PBT KEYCAPS PRODUCT INFORMATION GUIDE	<p>PrismCaps Universal Double Shot PBT Keycaps Product Information Guide</p> <p>Product information and setup guide for SteelSeries PrismCaps Universal Double Shot PBT Keycaps, detailing package contents for various keyboard layouts and installation instructions.</p>
  APEX PRO MINI PRODUCT INFORMATION GUIDE	<p>SteelSeries Apex Pro Mini Keyboard Product Information Guide</p> <p>Comprehensive guide to the SteelSeries Apex Pro Mini gaming keyboard, detailing its features, setup, functions, software integration, and regulatory compliance.</p>

<div data-bbox="124 98 296 129" data-label="Image"></div> <div data-bbox="113 185 293 318" data-label="Image"></div> <div data-bbox="134 376 272 407" data-label="Caption"><p>APEX PRO PRODUCT INFORMATION GUIDE</p></div>	<div data-bbox="339 181 1107 212" data-label="Section-Header"><p>SteelSeries Apex Pro Gaming Keyboard Product Information Guide</p></div> <div data-bbox="339 224 1452 331" data-label="Text"><p>Comprehensive guide to the SteelSeries Apex Pro gaming keyboard, covering setup, features, functions, and software integration. Learn about customizable actuation, macro recording, lighting controls, and multimedia functions.</p></div>
<div data-bbox="124 474 296 506" data-label="Image"></div> <div data-bbox="113 580 293 689" data-label="Image"></div> <div data-bbox="134 743 272 786" data-label="Caption"><p>APEX PRO TKL WIRELESS PRODUCT INFORMATION GUIDE</p></div>	<div data-bbox="339 584 1053 616" data-label="Section-Header"><p>SteelSeries Apex Pro TKL Wireless Product Information Guide</p></div> <div data-bbox="339 627 1385 696" data-label="Text"><p>Comprehensive guide for the SteelSeries Apex Pro TKL Wireless keyboard, covering setup, features, functions, and compatibility for PC, Mac, Xbox, and PlayStation.</p></div>
<div data-bbox="124 851 296 882" data-label="Image"></div> <div data-bbox="134 931 311 1055" data-label="Image"></div> <div data-bbox="134 1128 272 1160" data-label="Caption"><p>APEX PRO MINI PRODUCT INFORMATION GUIDE</p></div>	<div data-bbox="339 1003 1064 1034" data-label="Section-Header"><p>SteelSeries Apex Pro Mini Keyboard Product Information Guide</p></div> <div data-bbox="339 1046 1393 1115" data-label="Text"><p>This guide provides detailed information on the SteelSeries Apex Pro Mini gaming keyboard, covering its features, setup, functions, customization options, and regulatory compliance.</p></div>