

RYOBI R16GN18-0

RYOBI R16GN18-0 18V ONE+ 16-Gauge Finishing Nailer User Manual

Model: R16GN18-0

1. INTRODUCTION

Thank you for choosing the RYOBI R16GN18-0 18V ONE+ 16-Gauge Finishing Nailer. This manual provides essential information for the safe operation, setup, maintenance, and troubleshooting of your new tool. Please read this manual thoroughly before use and retain it for future reference.

The RYOBI R16GN18-0 is a cordless finishing nailer designed for various woodworking and finishing applications. It utilizes AirStrike Compressed Air Technology, eliminating the need for gas cartridges, compressors, or hoses, offering convenience and portability.



Figure 1: Front-side view of the RYOBI R16GN18-0 18V ONE+ 16-Gauge Finishing Nailer.

2. GENERAL SAFETY INFORMATION

WARNING: Read all safety warnings, instructions, illustrations, and specifications provided with this power tool. Failure to follow all instructions listed below may result in electric shock, fire, and/or serious injury.

2.1 Personal Safety

- Always wear eye protection that complies with applicable standards.
- Wear hearing protection during extended use.
- Dress appropriately; avoid loose clothing or jewelry that can get caught in moving parts.
- Stay alert, watch what you are doing, and use common sense when operating a power tool.

2.2 Tool Use and Care

- Do not force the tool. Use the correct tool for your application.
- Disconnect the battery pack from the tool before making any adjustments, changing accessories, or storing power tools.
- Store idle power tools out of the reach of children and do not allow persons unfamiliar with the power tool or these instructions to operate the power tool.
- Maintain power tools and accessories. Check for misalignment or binding of moving parts, breakage of parts, and any other condition that may affect the power tool's operation.

2.3 Nailer Specific Safety

- Never point the tool at yourself or others.
- Ensure the workpiece is stable before nailing.
- Do not operate the nailer if the contact trip mechanism is not functioning correctly.
- Always assume the tool contains fasteners.
- Use only fasteners specified for this tool (16-gauge, 19-64mm length).

3. PACKAGE CONTENTS

Upon unpacking, ensure all items listed below are present and undamaged. If any parts are missing or damaged, contact your retailer immediately.

- RYOBI R16GN18-0 18V ONE+ 16-Gauge Finishing Nailer
- 500 x 50mm 16-gauge finishing nails
- 2 x Material protection tips
- 1 x Belt hook
- User Manual (this document)

Note: Battery and charger are sold separately as part of the RYOBI ONE+ concept, allowing you to use existing 18V ONE+ batteries.



Figure 2: The RYOBI R16GN18-0 nailer shown in its retail packaging, indicating included accessories.

4. SETUP

4.1 Battery Installation

1. Ensure the nailer is switched off.
2. Align the RYOBI 18V ONE+ battery pack with the battery port on the tool handle.
3. Slide the battery pack into the port until it clicks securely into place.
4. To remove, press the release latches on the battery pack and slide it out.

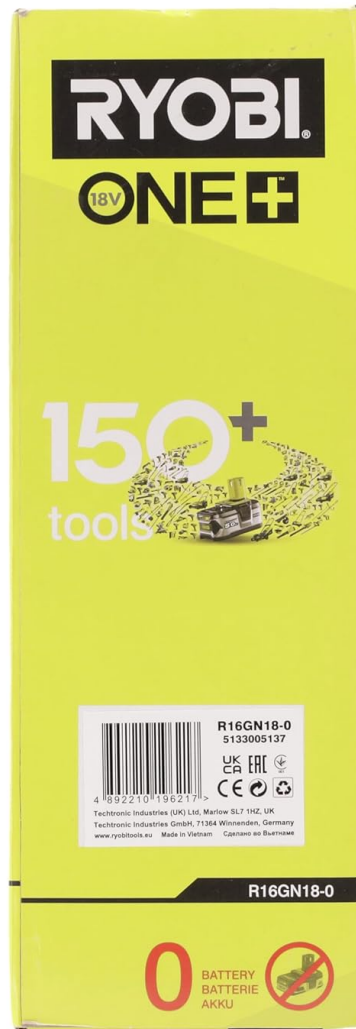


Figure 3: The nailer with an 18V ONE+ battery attached, demonstrating proper battery installation.

4.2 Loading Nails

1. Ensure the battery is removed for safety.
2. Pull back the magazine follower until it locks in the open position.
3. Insert a strip of 16-gauge finishing nails into the magazine, with the nail points facing down.
4. Release the magazine follower, allowing it to push the nails forward.
5. Verify that the nails are properly seated and move freely within the magazine.



Figure 4: Detail of the nailer's magazine, illustrating how to load a strip of 16-gauge nails.

4.3 Adjusting Depth of Drive

The depth of drive can be adjusted to suit different materials and desired nail finishes.

- Locate the depth adjustment wheel near the nose of the tool.
- Rotate the wheel to increase or decrease the nail's penetration depth. Test on a scrap piece of material to achieve the desired depth.
- Attach the material protection tips to prevent marring delicate surfaces.

5. OPERATING INSTRUCTIONS

5.1 Powering On/Off

The tool features a power switch and an LED light for illumination.

- To turn on, press the power button. The LED light will illuminate.
- To turn off, press the power button again.

5.2 Nailing Procedure

1. Ensure the battery is installed and nails are loaded.
2. Place the nose of the nailer firmly against the workpiece where the nail is to be driven. The contact trip mechanism must be fully depressed.

3. Squeeze the trigger to drive a nail. The tool is designed for sequential firing for safety.
4. After each nail, lift the tool slightly and reposition for the next nail.



Figure 5: Side view of the nailer, showing the ergonomic grip and trigger mechanism for operation.

5.3 Clearing Nail Jams

If a nail jam occurs, follow these steps:

1. **IMPORTANT:** Remove the battery pack immediately.
2. Open the magazine and remove any remaining nails.
3. Locate the jam release lever or mechanism on the nose of the tool.
4. Open the jam release to access the jammed nail. Use pliers if necessary to carefully remove the nail.
5. Close the jam release and reload nails. Reinstall the battery.

6. MAINTENANCE

Regular maintenance ensures optimal performance and extends the life of your tool.

6.1 Cleaning

- Always remove the battery before cleaning.
- Use a clean, dry cloth to wipe down the exterior of the tool.
- Periodically clear dust and debris from the magazine and firing mechanism using compressed air or a soft brush.
- Do not use harsh chemicals or abrasive cleaners.

6.2 Storage

- Store the tool in a dry, secure location, out of reach of children.
- Remove the battery pack before storing for extended periods.
- Protect the tool from direct sunlight, extreme temperatures, and moisture.

7. TROUBLESHOOTING

Problem	Possible Cause	Solution
Tool does not fire	Battery not installed or discharged; No nails in magazine; Contact trip not fully depressed; Power switch off.	Install charged battery; Load nails; Ensure contact trip is fully depressed against workpiece; Turn power switch on.
Nails jam frequently	Incorrect nail size/type; Damaged nails; Magazine dirty; Tool not held firmly against workpiece.	Use correct 16-gauge nails (19-64mm); Inspect nails for damage; Clean magazine; Hold tool firmly and squarely.
Nails not driven to full depth	Depth adjustment set too shallow; Low battery charge; Incorrect nail length for material.	Adjust depth setting deeper; Recharge battery; Ensure nail length is appropriate for material thickness.
Tool operates slowly or weakly	Low battery charge; Tool overheating.	Recharge battery; Allow tool to cool down.

8. SPECIFICATIONS

Feature	Detail
Model Number	R16GN18-0 (5133005137)
Voltage	18V (RYOBI ONE+ System)
Nail Gauge	16 Gauge (1.6 mm)
Nail Length Range	19 mm to 64 mm
Magazine Capacity	100 nails
Nailing Speed	Up to 60 nails/min
Technology	AirStrike Compressed Air Technology
Weight (tool only)	Approximately 5.95 lbs (2.7 kg)
Dimensions (L x W x H)	9.45 x 14.41 x 12.99 inches (approximate)



Figure 6: Visual representation of the nailer highlighting key features and technical specifications.







9. WARRANTY AND SUPPORT

RYOBI offers a comprehensive warranty for its tools. All RYOBI tools and batteries are guaranteed for a total period of 24 months from the date of purchase. An extended warranty of one additional year is offered if the consumer registers their product within 30 days of the purchase date.

To register your product and for full warranty terms and conditions, please visit the official RYOBI website or refer to the warranty card included with your product. Proof of purchase (original invoice) and registration confirmation are required for warranty claims.

For technical support, spare parts, or service inquiries, please contact RYOBI customer service through their official website or authorized service centers.

Note: Warranty terms may vary by region. Please consult your local RYOBI distributor for specific details.

	<p>RYOBI R15GN18 AirStrike Nailer User Manual and Safety Guide</p> <p>Comprehensive user manual for the RYOBI R15GN18 AirStrike nailer, detailing safe operation, intended use, maintenance, and key features. Essential reading for all users.</p>
	<p>RYOBI R18NL 18V EP Nailer: Original Instructions and User Manual</p> <p>User manual with original instructions for the RYOBI R18NL 18V EP Nailer. Covers safe operation, features like AirStrike™ Technology and depth adjustment, intended uses, and troubleshooting for this cordless brad nailer.</p>
	<p>RYOBI P322 18V ONE+ HP Brushless Cordless Brad Nailer Operator's Manual</p> <p>Comprehensive operator's manual for the RYOBI P322 18V ONE+ HP Brushless Cordless Brad Nailer. Covers essential safety warnings, detailed operation instructions, maintenance procedures, troubleshooting guide, and product specifications.</p>
	<p>RYOBI ONE+ 18V 30° Framing Nailer PBL350 Operator's Manual</p> <p>Comprehensive operator's manual for the RYOBI ONE+ 18V 30° Framing Nailer (Model PBL350), covering safety warnings, operation, maintenance, and troubleshooting. Includes instructions in English, French, and Spanish.</p>
	<p>Ryobi PBL350 18 Volt 30° Framing Nailer Operator's Manual</p> <p>Comprehensive operator's manual for the Ryobi PBL350 18 Volt 30° Framing Nailer. This guide covers essential safety warnings, detailed operation instructions, maintenance procedures, and troubleshooting tips for safe and effective use.</p>
	<p>Ryobi P326 16 GA Straight Finish Nailer Operator's Manual</p> <p>Comprehensive operator's manual for the Ryobi P326 16 GA Straight Finish Nailer, covering safety warnings, operation, maintenance, troubleshooting, and specifications. Learn how to safely and effectively use your Ryobi finish nailer.</p>