

Ufree 1668-1

Ufree Electric Razor and Trimmer Kit User Manual

Model: 1668-1

IMPORTANT SAFETY INFORMATION

Please read all instructions carefully before using the Ufree Electric Razor and Trimmer Kit. Keep this manual for future reference.

- Keep away from water. Do not use while charging.
- Exercise caution when using near sensitive skin areas or eyes.
- Statements regarding dietary supplements have not been evaluated by the FDA and are not intended to diagnose, treat, cure, or prevent any disease or health condition.

PRODUCT OVERVIEW

The Ufree Electric Razor and Trimmer Kit is designed for versatile grooming, offering both precise trimming and close shaving capabilities. It features a durable metal body and powerful motor for efficient performance.

Key Features:

- **More Professional, More Practical:** Designed to meet diverse grooming needs for hair, beard, and other body hair.
- **7500RPM Powerful Motor:** High-performance motor with excellent heat dissipation, capable of handling thick and coarse hair.
- **Titanium T-Blade & Double Foil Blade:** Features a gold titanium nitride body and nickel mesh for robust and efficient shaving. Blades are designed for precise, zero-gap cuts and are hypoallergenic.
- **Portable & Long-Lasting:** Built-in rechargeable lithium-ion battery provides up to 150 minutes of cordless runtime after a 2-hour charge. Adaptable to worldwide voltages.
- **Special Note:** Clippers are best suited for stubble up to 1/25". For thicker, coarser hair, pre-trimming with the hair trimmer is recommended for a smoother shave.



Figure 1: Ufree Electric Razor and Trimmer Kit with included accessories.



Hair can be trimmed in a variety of lengths

Sharp T-blade



Replaceable Blade



Smooth Shave



Premium Blade



Upgraded Razor Head

Figure 2: Detail of the sharp T-blade and replaceable shaver blade for smooth results.

UPGRADE 7500RMP MOTOR

High performance motor heat
dissipation is good,
can run all day without heating up



**Upgraded
Heat Dissipation**



Powerful



7500rpm

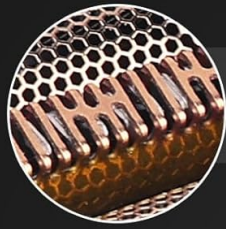


Efficient



Figure 3: Illustration highlighting the upgraded 7500RPM motor and efficient heat dissipation.

Floating Blade Design



Better capture facial hair to achieve clean and smooth shaving

Larger mesh for faster shaving

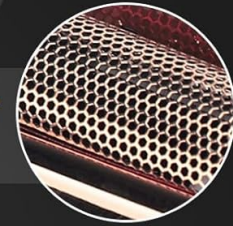


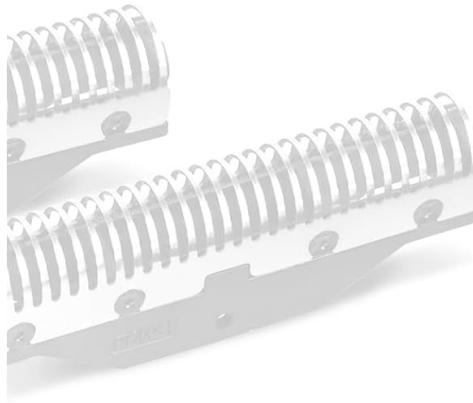
Figure 4: The floating blade design ensures better capture of facial hair for a clean and smooth shave.

SETUP

Before first use, ensure your Ufree grooming kit is fully charged.

Charging the Device:

1. Connect the provided USB charging cable to the charging port at the bottom of the trimmer or shaver.
2. Plug the other end of the USB cable into a compatible USB power adapter (not included) or a computer USB port.
3. The LED display will indicate charging status. A full charge takes approximately 2 hours, providing up to 150 minutes of cordless runtime.



Powerful

Foil Shavers



All-in-One Mens Grooming Kit



Hair Trimmer



Zero Gapped

Figure 5: Charging the Ufree Electric Razor and Trimmer Kit. Note the 120-minute charging time for 150 minutes of running time.

OPERATING INSTRUCTIONS

Using the Hair Trimmer:

- The hair trimmer features a sharp Titanium T-blade for precise lines and detailing.
- Attach the desired comb attachment (1mm, 3mm, 5mm, or 7mm) for varying hair lengths.
- Press the power button to turn on the trimmer. The LED display will show the remaining power.
- Gently guide the trimmer against the direction of hair growth for optimal results.



WHY CHOOSE US ?	OTHERS
✓ METAL BODY	✗ PLASTIC MATERIAL
✓ UPGRADED 7500RPM POWERFUL MOTOR	✗ WEAK MOTOR
✓ SUPER SHARP BLADE	✗ EASY TO PULL HAIR
✓ BETTER WEIGHT AND FEEL	✗ TOO LIGHT FEELS BAD

Figure 6: The hair trimmer is ideal for precise, zero-gapped cuts and detailing.

Using the Foil Shaver:

- The foil shaver is equipped with a double foil blade for a close and smooth shave.
- For best results, ensure hair is trimmed to stubble shorter than 1/25" before using the shaver.
- Press the power button to activate the shaver.
- Move the shaver gently across the skin, applying light pressure.

How to use the electric shaver properly ?

Our shavers are suitable for stubble of shorter than 1/25". So if your hair is coarse, thick and curly, it is recommended to trim that down with another razors/clippers before using this one for a smooth shave.



Figure 7: For optimal shaving results, pre-trimming longer hair with the trimmer is recommended.

MAINTENANCE

Regular cleaning and proper care will extend the lifespan of your Ufree grooming kit.

Cleaning:

- Ensure the device is turned off and unplugged before cleaning.
- The blades are washable. Press the button to remove the shaver cover upwards for easy cleaning.
- Rinse the blades under running water. Do not immerse the main body of the device in water.
- Use the provided cleaning brush to remove any trapped hair from the blades and internal components.
- Allow all parts to air dry completely before reassembling or storing.



Figure 8: The shaver head is designed for easy removal and cleaning under running water.

Blade Replacement:

- The shaver features replaceable blades to maintain optimal performance.
- When the blades become dull or damaged, replace them with genuine Ufree replacement blades.
- Refer to the product packaging or Ufree's official website for information on purchasing replacement blades.

TROUBLESHOOTING

Problem	Possible Cause	Solution
Device not turning on.	Low battery or not charged.	Charge the device fully (approx. 2 hours).
Poor cutting performance.	Blades are dull, dirty, or hair is too long.	Clean blades, replace if necessary. For shaver, pre-trim long hair.
Device making unusual noise.	Hair caught in blades or internal issue.	Clean blades thoroughly. If issue persists, contact support.

Problem	Possible Cause	Solution
Skin irritation after shaving.	Hair too long, sensitive skin, or improper technique.	Ensure hair is short (stubble). Use light pressure. Consider pre-shave preparation for sensitive skin.

SPECIFICATIONS

Feature	Detail
Brand	Ufree
Model Number	1668-1
Product Dimensions	7.09 x 4.72 x 1.57 inches
Item Weight	1.61 Pounds (729 Grams)
Color	Bronze
Motor Speed	7500 RPM
Battery Type	Rechargeable Lithium-ion
Charging Time	Approx. 2 hours
Runtime	Up to 150 minutes
Country of Origin	China

WARRANTY AND SUPPORT

Ufree is committed to providing high-quality products and excellent customer service.

- **1-Year Warranty:** Your Ufree product is covered by a 1-year warranty from the date of purchase.
- **30-Day Money Back Guarantee:** Enjoy peace of mind with a 30-day money-back guarantee.
- **24-Hour Support:** For any questions, concerns, or technical assistance, our customer support team is available 24 hours a day.
- **User Manual (PDF):** A detailed PDF version of the user manual is available for download at: <https://manuals.plus/m/4a6e5c1c2d8bd835c5dba768d27815b9c69ff391eef00ef8be219691542b908f>