

## Revolvo RE002

# Revolvo Keyless Entry Door Lock User Manual

Model: RE002

## INTRODUCTION

---

This manual provides detailed instructions for the installation, operation, and maintenance of your Revolvo Keyless Entry Door Lock with Touchscreen Keypads. Please read this manual thoroughly before installation and use to ensure proper function and safety.



Image: The Revolo Keyless Entry Door Lock in Oil Rubbed Bronze, installed on a white interior door, showcasing its sleek design and touchscreen keypad.

## PRODUCT FEATURES

---

- **Keyless Entry:** Highly responsive touchscreen for quick manual locking and unlocking. Supports up to 30 access codes for family use. Eliminates the need for physical keys.
- **Automatic Lock:** Configurable auto-lock feature after 30 seconds or one-touch motorized locking.
- **Anti-Peeking Password:** Enhances security by allowing entry of random digits before or after the PIN code to prevent exposure.
- **Certified Highest Security:** All-metal construction with sturdy zinc alloy and stainless steel frame. Certified ANSI/BHMA A156.40 Grade 2 for durability and security.
- **Weatherproof:** IP65 weatherproof rating ensures protection in temperatures ranging from -35°C/-31°F to 66°C/151°F.
- **Ultra Long Lifespan:** Designed for long-term use in private houses, apartments, or offices. Includes two mechanical

keys for backup.

- **Easy Installation:** Quick DIY installation in minutes with no drilling required. Compatible with right-handed or left-handed doors and fits most standard door preparations.



Image: An infographic highlighting the versatility and security features of the Revolo lock, including support for 30 user codes, auto-lock, IP65 waterproofing, privacy mode, one-touch locking, and impact resistance.

## WHAT'S INCLUDED

---

The Revolo Keyless Entry Door Lock package includes the following components:

- Revolo RE002 touchscreen keypad door lock (exterior and interior assemblies)
- 2 Mechanical Keys (for backup access)
- Latch
- Strike Plate
- Installation Instructions (this manual)

- Programming Instructions



Image: A detailed diagram illustrating the dimensions of the Revolo Keyless Entry Door Lock components, including the exterior keypad, interior assembly, latch, and strike plate, along with measurements for door preparation.

## SETUP AND INSTALLATION

Follow these steps for a successful installation of your Revolo Keyless Entry Door Lock. For a visual guide, please refer to the installation video below.

### Installation Video Guide

Your browser does not support the video tag.

Video: Official Revolo Keyless Entry Door Lock Installation Guide for Model RE002. This video provides a step-by-step visual walkthrough of the installation process.

### Step-by-Step Installation

1. **Prepare the Door:** Ensure your door is properly prepared for a deadbolt installation. Check the backset (2.4" or 2.8") and bore hole diameter (2.1").
2. **Install the Latch:** Insert the latch into the door edge. Ensure the latch bolt is facing the correct direction (downward for standard installation). Secure it with the provided screws.



Image: A hand inserting the latch mechanism into the door's edge, preparing it for the lock assembly.

3. **Install the Exterior Keypad:** Carefully align the exterior keypad with the latch. Ensure the lock cylinder is correctly aligned with the latch mechanism. Pass the cable through the door hole.



Image: A person installing the exterior keypad of the Revolo lock onto a door, demonstrating the ease of DIY installation.

4. **Install the Mounting Plate:** Position the mounting plate on the interior side of the door, ensuring the screw of the

mounting plate aligns with the screw of the latch. Secure it with the long screws provided.

5. **Connect Cables and Install Interior Assembly:** Connect the cable from the exterior keypad to the connector on the interior assembly. Carefully tuck excess cable. Attach the interior assembly to the mounting plate and secure it with the small screws.
6. **Insert Batteries:** Open the battery cover on the interior assembly. Insert 4 AA alkaline batteries (not included), ensuring correct polarity. Close the battery cover.
7. **Test the Latch and Deadbolt:** Manually operate the deadbolt from the interior to ensure it extends and retracts smoothly. Test the keypad functionality.

## OPERATING INSTRUCTIONS

---

### Unlocking the Door

- **Using a Code:** Touch the keypad to activate it. Enter your 4-8 digit user code followed by the '#' key. The deadbolt will retract.
- **Using Mechanical Key:** Insert the mechanical key into the keyhole and turn to unlock.



# Up to 30 password combinations



Image: The Revolo lock keypad illustrating the capability of storing up to 30 unique password combinations for various users.

## Locking the Door

- **Automatic Locking:** If enabled, the lock will automatically extend the deadbolt after 30 seconds of being unlocked. This duration can be adjusted (10 to 99 seconds).

# Automatic locking



Image: The Revolo lock demonstrating its automatic locking feature, where the deadbolt extends automatically after a set period.

- **One-Touch Locking:** Press and hold any key on the keypad for 2 seconds to lock the door instantly.
- **Manual Locking:** From the interior, turn the thumb-turn knob to extend the deadbolt.

## Anti-Peeking Password

To prevent others from guessing your code, you can enter random digits before or after your actual PIN. For example, if your PIN is 1234, you can enter 567123489#.



# Anti-Peeping Code Combination



Image: An illustration of the anti-peeping code combination feature, showing how random digits can be added before and after the actual password for enhanced security.

## MAINTENANCE

- **Cleaning:** Clean the touchscreen keypad periodically with a soft, dry cloth to remove fingerprints and smudges. Avoid abrasive cleaners or solvents.
- **Battery Replacement:** The lock will indicate low battery with a warning light or sound. Replace all four AA batteries promptly to ensure continuous operation.



Image: The Revolo lock with a battery icon, indicating the battery status and reminding users about battery maintenance.

- **Lubrication:** Periodically lubricate the latch bolt and deadbolt mechanism with a silicone-based lubricant to ensure smooth operation. Do not lubricate the cylinder.
- **Weather Protection:** While the lock is IP65 weatherproof, extreme conditions can affect performance. Ensure proper installation to minimize exposure to direct heavy rain or snow.



Image: The Revolo lock illustrating its robust weather resistance, capable of withstanding temperatures from -31°F to 151°F, backed by its IP65 weatherproof rating.

## TROUBLESHOOTING

Problem	Possible Cause	Solution
Lock does not respond to keypad entry.	Low batteries; incorrect code entered; keypad malfunction.	Replace batteries; re-enter code carefully; use mechanical key for access and contact support if issue persists.
Deadbolt does not extend/retract smoothly.	Misalignment during installation; obstruction in door frame; worn mechanism.	Check alignment of lock and strike plate; clear any obstructions; lubricate mechanism (avoid cylinder); contact support.
Auto-lock feature not working.	Feature disabled; incorrect time setting.	Refer to programming instructions to enable and set auto-lock time.
Keypad lights up but no response.	Internal connection issue; electronic fault.	Ensure all cables are securely connected (refer to installation); contact technical support.

## SPECIFICATIONS

- **Brand:** Revolo
- **Model Name:** RE002
- **Lock Type:** Keypad Deadbolt
- **Material:** Zinc (All-metal construction)
- **Color:** Oil Rubbed Bronze
- **Item Dimensions (L x W x H):** 9 x 7 x 4 inches

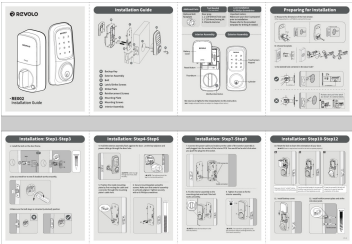
- **Item Weight:** 4.18 pounds
- **Power Source:** 4 AA Batteries (not included)
- **Special Features:** Auto-Lock, Anti-Peeking Password, IP65 Weatherproof
- **Certifications:** ANSI/BHMA A156.40 Grade 2
- **Operating Temperature Range:** -35°C/-31°F to 66°C/151°F
- **Door Compatibility:** Right-handed or left-handed doors, fits most standard door preparations.

## WARRANTY AND SUPPORT

Revolvo provides a **1-Year product warranty** from the date of purchase. Additionally, customers receive **free lifetime technical support**. For technical assistance, troubleshooting, or warranty claims, please contact Revolvo customer service through the official channels provided at the time of purchase or visit the [Revolvo Store on Amazon](#).

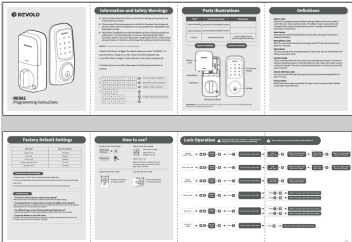
© 2024 Revolvo. All rights reserved.

### Documents - Revolvo – RE002



[Revolvo RE002 Keyless Entry Door Lock Installation Guide](#)

Step-by-step instructions for installing the Revolvo RE002 keyless entry door lock, including preparation, assembly, and final setup.  
lang: score:26 filesize: 8.33 M page\_count: 1 document date: 2022-06-27



[Revolvo RE002 Programming Instructions and User Guide](#)

Comprehensive guide for the Revolvo RE002 keyless entry door lock, covering programming, operation, safety warnings, and troubleshooting.  
lang:nl score:15 filesize: 3.14 M page\_count: 1 document date: 2023-05-18