

[Manuals.plus](#) /

> [Carlinkit](#) /

> Carlinkit Wireless CarPlay and Android Auto Adapter Instruction Manual

Carlinkit CPC200-CCPA

Carlinkit Wireless CarPlay and Android Auto Adapter

Model: CPC200-CCPA | Brand: Carlinkit

1. INTRODUCTION

The Carlinkit CPC200-CCPA is a wireless adapter designed to bring Apple CarPlay and Android Auto functionality to your aftermarket Android car radio. This device allows for seamless wireless integration of your smartphone, providing access to navigation, music, messages, and more directly on your car's display without the need for a wired connection.

This manual provides detailed instructions for the installation, operation, and maintenance of your Carlinkit adapter.



Image: CarlinKit CPC200-CCPA adapter and its retail packaging.

2. COMPATIBILITY & REQUIREMENTS

This adapter is specifically designed for aftermarket Android car radios. It is not compatible with original factory-installed car radios.

System Requirements:

- **Car Radio:** Must be an aftermarket Android system car radio.
- **Android Version:** Requires Android 4.4.2 or higher.
- **Required Application:** The "AutoKit" APK must be installed on your car radio.

Prend uniquement en charge **Android 4.42** et supérieur, et doit installer **“AutoKit”** APK

<http://121.40.123.198:8080/autokit/autokit.apk>



Image: Visual representation of compatibility, showing support for Android 4.42+ and the need for AutoKit APK.

3. SETUP AND INSTALLATION

Follow these steps to set up and install your CarlinKit adapter:

3.1. Verify Car Radio System

1. Enter the "Settings" interface on your car radio.
2. Click on "About the device" to check the Android version. Ensure it is Android 4.4.2 or higher.

Comment vérifier le système d'autoradio?

1

Entrez dans l'interface "Paramètres"



"Réglages"



2

Cliquez sur "À propos de l'appareil"

Android version
5.1.2

 About the device

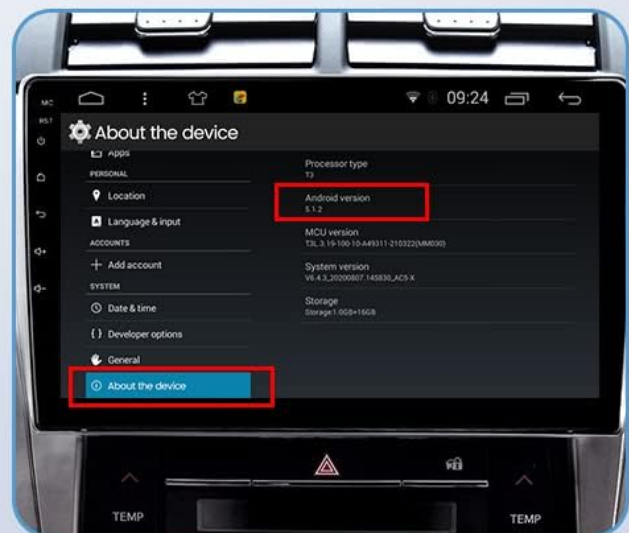


Image: Instructions on how to check your car radio's Android system version.

3.2. Install AutoKit APK

The AutoKit APK is essential for the adapter to function. There are two methods for installation:

Method 1: Integrated APK Package

1. Insert the CarlinKit adapter into a USB port of your car radio.
2. Wait approximately 30 seconds. A "USB flash drive" icon should appear on the top row of your car radio's screen.
3. Navigate to the file manager on your car radio.
4. Locate and open the "BoxHelper APK" file from the USB drive.
5. Follow the on-screen prompts to install the "AutoKit APK".

Package d'installation "APK" intégré

Insérez le produit dans la machine de la voiture, "l'icône du disque U" apparaîtra sur la couche supérieure, entrez dans le gestionnaire de fichiers, cliquez sur (storage01)

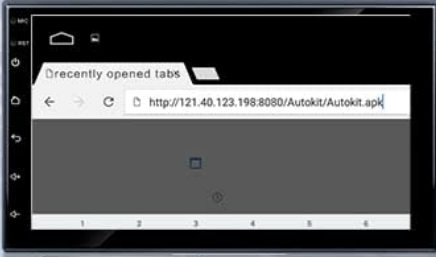


Étapes d'installation

- 1 File Manager
- 2 BoxHelper.apk
- 3 Autokit APK

Si vous ne pouvez pas installer "Autokit", vous ne pouvez pas utiliser le produit

Cliquez sur le navigateur de la voiture, entrez le lien de téléchargement, cliquez sur "Répertoire de téléchargement" pour trouver le fichier APK téléchargé, puis cliquez sur Installer



Installer Autokit APK

http://121.40.123.198:8080/Autokit/Autokit.apk




Image: Visual guide for installing the AutoKit APK from the integrated package.

Method 2: Manual Download (if Method 1 fails)

If you are unable to install AutoKit using the integrated package, you can download it manually:

1. Connect your car radio to a Wi-Fi network.
2. Open the browser on your car radio.
3. Enter the following download link:<http://121.40.123.198:8080/autokit/autokit.apk>
4. Click on the download link to get the APK file.
5. Once downloaded, go to your car radio's file manager or "Downloads" folder and install the "AutoKit APK".



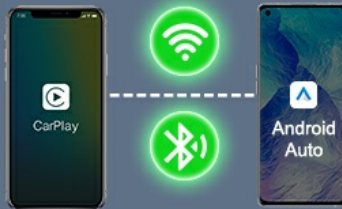
1

Entrez "Autokit"



2

Activer le Bluetooth
Wi-Fi sur votre téléphone



3

L'appairage Bluetooth est
réussi, vous pouvez l'utiliser

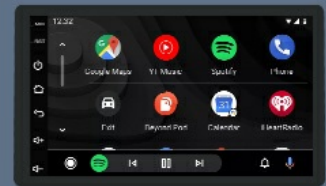


Image: Steps for manual download and installation of the AutoKit APK.

Important: The product will not function without the AutoKit application installed.

4. OPERATION

Once the AutoKit APK is installed and the CarlinKit adapter is connected, you can proceed with connecting your smartphone wirelessly.

4.1. Wireless Apple CarPlay Connection

1. Open the "AutoKit" application on your car radio.
2. Ensure the CarlinKit adapter is plugged into a USB port on your car radio and the signal is transmitted.
3. On your iPhone, activate both Wi-Fi and Bluetooth.
4. Go to your iPhone's Bluetooth settings and search for available devices. Your iPhone should detect the CarlinKit adapter (e.g., "AutoKit-xxxx"). Select it to pair.
5. After a short period, Apple CarPlay will automatically launch on your car radio screen.

Note: Ensure your iPhone's Bluetooth and Wi-Fi are not connected to other devices, as this may prevent successful connection.

CarPlay sans Fil & Android Auto sans Fil

Ne prenez pas de place dans la voiture, obtenez un environnement intérieur propre et bien rangé



Connexion sans fil mains libres



Image: Overview of wireless CarPlay and Android Auto functionality.



Image: Example of the Apple CarPlay interface displayed on a car screen.

Your browser does not support the video tag.

Video: Demonstrates the process of connecting and using Apple CarPlay wirelessly with the CarlinKit adapter.

4.2. Wireless Android Auto Connection

1. Open the "AutoKit" application on your car radio.
2. Ensure the CarlinKit adapter is plugged into a USB port on your car radio and the signal is transmitted.
3. On your Android phone, activate both Wi-Fi and Bluetooth.
4. Go to your Android phone's Bluetooth settings and search for available devices. Your phone should detect the CarlinKit adapter (e.g., "AutoKit-xxxx"). Select it to pair.
5. After a short period, Android Auto will automatically launch on your car radio screen.

Note: Ensure your Android phone's Bluetooth and Wi-Fi are not connected to other devices, as this may prevent successful connection.

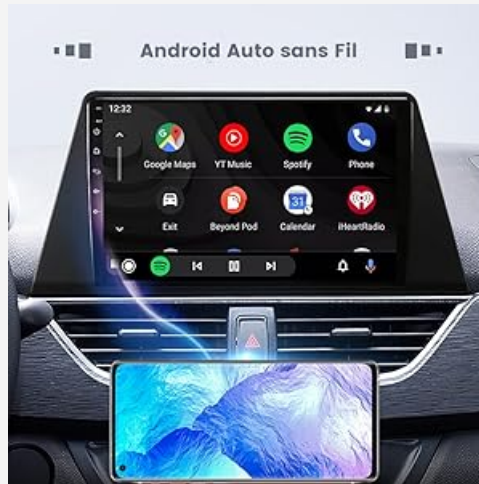


Image: Example of the Android Auto interface displayed on a car screen.

5. PRODUCT SPECIFICATIONS

Feature	Detail
Model	CPC200-CCPA
Material	ABS + PC
Product Dimensions	185 x 42 x 13 mm
Product Weight	0.04 kg
Bluetooth Frequency	2412-2472MHz
Wi-Fi Frequency	5150-5250MHz, 5725-5850MHz
Connections	Wi-Fi, USB
Compatible Devices	Smartphone (iPhone iOS 10+, Android 11+ for wireless AA, Samsung Galaxy S8/S8+/Note 8 with Android 9.0)

Table: Detailed technical specifications of the CarlinKit CPC200-CCPA adapter.



Paramètres du produit

CarlinKit®

Liste de colisage produit * 1 Boîte d'emballage * 1 manuel du produit * 1



Modèle: CPC200-CCPA



Matériau : ABS + ordinateur



Taille du produit : 185 × 42 × 13 mm



Poids du produit : 0,04 kg



Fréquence Bluetooth: 2412-2472MHz



Fréquence Wi-Fi: 5150-5250MHz, 5725-5850MHz

Image: Diagram illustrating the product dimensions and key specifications.

6. TROUBLESHOOTING

If you encounter issues with your CarlinKit adapter, consider the following common solutions:

• No Connection:

- Ensure the AutoKit APK is correctly installed and updated to the latest version.
- Verify that your car radio meets the minimum Android version requirement (4.4.2 or higher).
- Check that the adapter is securely plugged into a functional USB port on your car radio.
- Confirm that your smartphone's Bluetooth and Wi-Fi are enabled and not connected to other devices.
- Try restarting both your car radio and your smartphone.

• Intermittent Connection/Audio Issues:

- Ensure there are no other strong Wi-Fi or Bluetooth signals interfering in the vehicle.
- Try moving the adapter to a different USB port if available.

- Check for any available firmware updates for the CarlinKit adapter via the AutoKit app.

- **App Not Launching:**

- Reinstall the AutoKit APK.
- Ensure your car radio's system is stable and not running too many background applications.

For persistent issues, please refer to the support section.

7. MAINTENANCE

To ensure the longevity and optimal performance of your CarlinKit adapter, follow these general maintenance guidelines:

- **Cleaning:** Use a soft, dry cloth to clean the exterior of the adapter. Avoid using liquid cleaners or abrasive materials.
- **Storage:** When not in use for extended periods, store the adapter in a cool, dry place away from direct sunlight and extreme temperatures.
- **Handling:** Handle the adapter with care. Avoid dropping it or subjecting it to strong impacts.
- **Software Updates:** Periodically check for firmware updates for the adapter through the AutoKit application. Keeping the firmware updated can improve performance and compatibility.

8. WARRANTY AND SUPPORT

CarlinKit products undergo rigorous quality control before shipment. For any product-related inquiries, technical assistance, or warranty claims, please contact CarlinKit customer support directly via Amazon email or through their official website.

Please provide your product model (CPC200-CCPA) and purchase details when contacting support to expedite the process.

© 2024 Carlinkit. All rights reserved.

This manual is for informational purposes only. Specifications are subject to change without notice.