

Manuals+

[Q & A](#) | [Deep Search](#) | [Upload](#)

manuals.plus /

› [CRAFTSMAN](#) /

› [CRAFTSMAN 113.198210 Electronic Radial Arm Saw Operator Instructions & Parts Manual](#)

CRAFTSMAN 113.198210

CRAFTSMAN 113.198210 Electronic Radial Arm Saw Operator Instructions & Parts Manual

Model: 113.198210

Brand: CRAFTSMAN

INTRODUCTION

This manual provides essential instructions for the safe and effective operation, assembly, and maintenance of your CRAFTSMAN 113.198210 Electronic Radial Arm Saw. Please read all instructions carefully before operating the saw.

Save This Manual
For Future Reference

SEARS

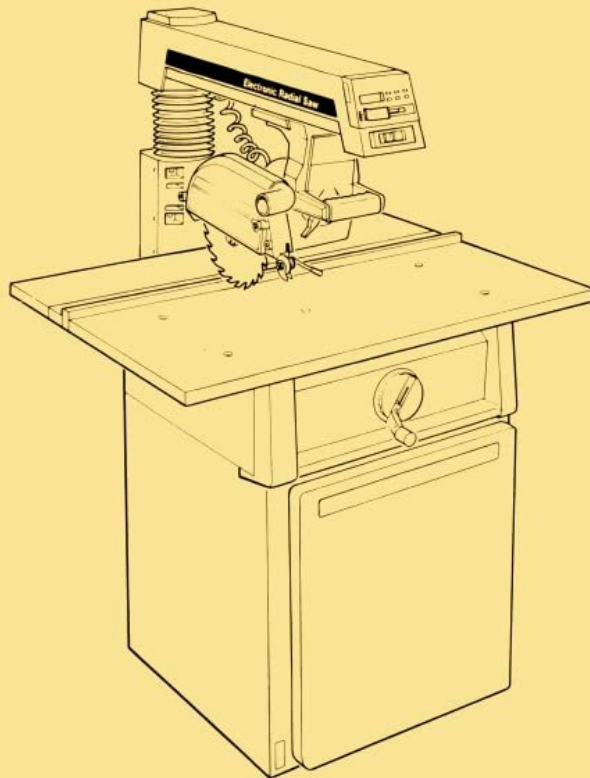
**owners
manual**

**MODEL NO.
113.198210**

**10" ELECTRONIC
RADIAL SAW WITH
23" CABINET AND
1 DOOR**

CAUTION:

**READ ALL
INSTRUCTIONS
CAREFULLY**



CRAFTSMAN

**10-INCH ELECTRONIC
RADIAL SAW**

- assembly
- operating
- repair parts

Sold by SEARS, ROEBUCK AND CO., Chicago, IL. 60684

1412

Part No. SP5016

Figure 1: Manual Cover - CRAFTSMAN 10-inch Electronic Radial Saw

SAFETY INSTRUCTIONS

CAUTION: READ ALL INSTRUCTIONS CAREFULLY.

WARNING: TO AVOID INJURY FROM UNEXPECTED STARTING OR ELECTRICAL SHOCK, DO NOT PLUG THE POWER CORD INTO A SOURCE OF POWER. THIS CORD MUST REMAIN UNPLUGGED WHENEVER YOU ARE WORKING ON THE SAW.

Always ensure the saw is unplugged before performing any assembly, maintenance, or adjustments. Wear

appropriate safety gear, including eye protection, hearing protection, and gloves, when operating or working on the saw.

UNPACKING AND PREASSEMBLY

The CRAFTSMAN 113.198210 Radial Saw is shipped complete in one box. Carefully unpack all components and verify against the parts list below. Ensure all packing materials are removed before proceeding with assembly.

unpacking and preassembly

WARNING: TO AVOID INJURY FROM UNEXPECTED STARTING OR ELECTRICAL SHOCK, DO NOT PLUG THE POWER CORD INTO A SOURCE OF POWER. THIS CORD MUST REMAIN UNPLUGGED WHENEVER YOU ARE WORKING ON THE SAW.

Model 113.198210 Radial Saw is shipped complete in one box.

ITEM NO.	DESCRIPTION	QTY.
A	Basic Saw Assembly	1
B	Rear Table	1
C	Table Spacer	1
D	Rip Fence	1
E	Front Table	1
F	Owners Manual	1
G	Loose Parts Bag	5
H	Channel, Table Mounting	2
I	Handwheel Assembly	1
J	Trim Cap, R.H.	1
K	Trim Ledge	1
L	Trim Cap, L.H.	1
M	23" Cabinet with 1 Door	1
N	Arbor Wrench	1
O	Shaft Wrench	1
P	Caster	2

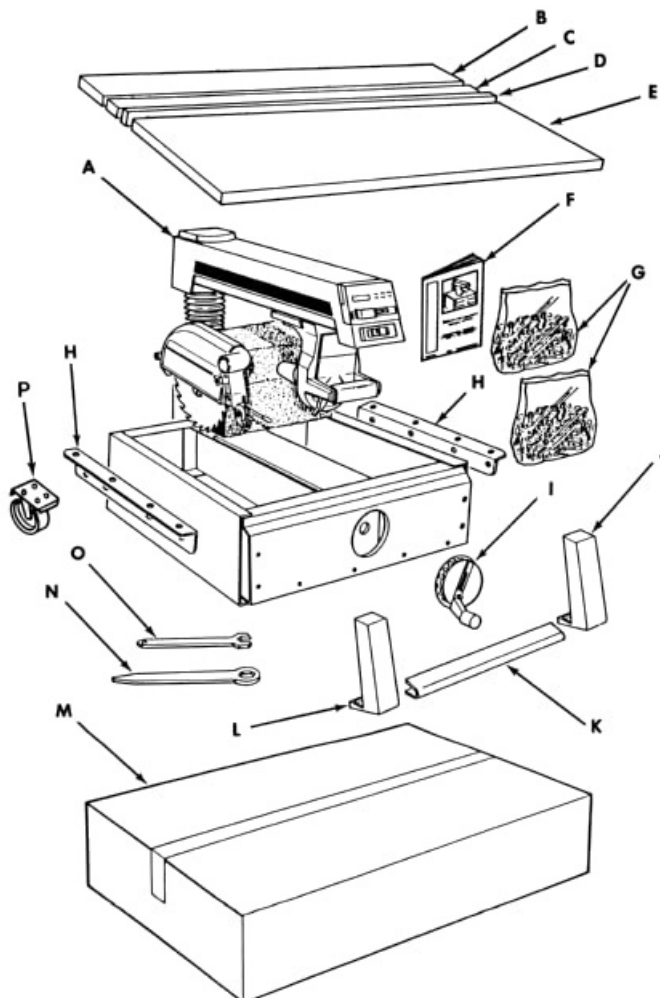


Figure 2: Unpacking and Preassembly Diagram

Preassembly Parts List

Item No.	Description	Qty.
A	Basic Saw Assembly	1
B	Rear Table	1
C	Cable Spacer	1
D	Rip Fence	1
E	Front Table	1
F	Owners Manual	1
G	Loose Parts Bag	1
H	Channel, Table Mounting	2
I	Handwheel Assembly	1
J	Trim Cap, R.H.	1
K	Trim Ledge	1
L	Trim Cap, L.H.	1
M	23" Cabinet with 1 Door	1
N	Arbor Wrench	1
P	Shaft Wrench	1
Q	Caster	2

SETUP AND ASSEMBLY

Detailed instructions for the complete setup and assembly of the CRAFTSMAN 113.198210 Electronic Radial Arm Saw are provided in the full manual. This includes mounting the saw to its cabinet, attaching tables, and securing all components. Proper assembly is crucial for safe and accurate operation.

OPERATING INSTRUCTIONS

The CRAFTSMAN 113.198210 Electronic Radial Arm Saw is designed for various cutting operations. The complete manual details how to set up the saw for different tasks, including:

- Basic crosscutting and ripping
- Beveling operations
- Molding operations
- Making precise adjustments for cut depth, angle, and length

Always ensure the workpiece is securely clamped and the blade guard is in place before starting any cutting operation.

MAINTENANCE

Regular maintenance is essential to ensure the longevity and safe operation of your radial arm saw. The full manual provides detailed information on:

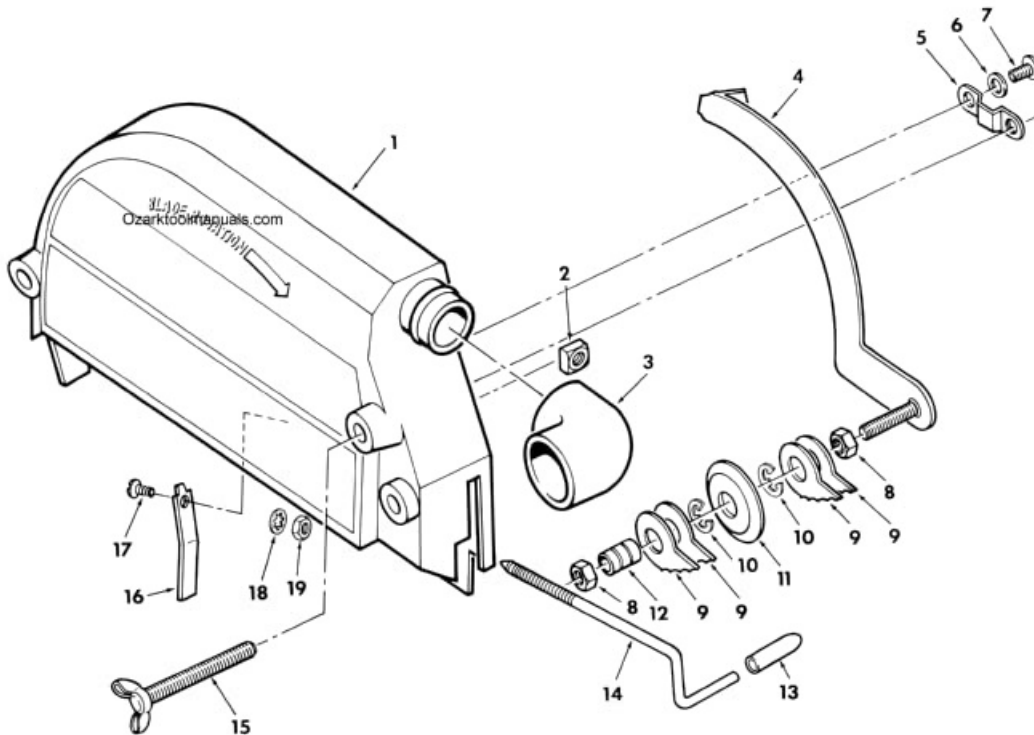
- Lubrication schedules and points
- Cleaning procedures for the saw and its components
- Inspection of electrical cords, blades, and moving parts
- Adjustments to maintain accuracy and performance

Always disconnect power before performing any maintenance or cleaning.

PARTS LIST FOR GUARD ASSEMBLY

This section provides a detailed parts list for the guard assembly of the CRAFTSMAN 10-inch Electronic Radial Saw, Model No. 113.198210. Refer to the diagram and table below for identification and ordering of replacement parts.

**PARTS LIST FOR CRAFTSMAN 10" ELECTRONIC RADIAL SAW
MODEL NO. 113.198210**



Always order by Part Number - Not by Key Number

FIGURE 6 - GUARD ASSEMBLY

Key No.	Part No.	Description
1	816264	Guard
2	120399	*Nut, Square 5/16-18
3	63258	Elbow, Dust
4	63541	Bar, Anti-Kickback
5	815816	Guide, Anti-Kickback
6	STD551010	*Washer, 13/64 x 5/8 x 1/32
7	STD601103	*Screw, Pan Hd. Type "T" 10-32 x 3/8
8	STD541231	*Nut, Hex Jam 5/6-18
9	815815	Pawl

Key No.	Part No.	Description
10	STD581050	*Ring, Retaining
11	63270	Spreader
12	816341	Bearing (Includes Key #10)
13	60435	Grip
14	816070	Screw, Guard Clamp
15	166785-3	Screw, Wing 5/16-18 x 2-3/4
16	63538	Clamp, Guard
17	STD510805	*Screw, Pan Hd. 8-32 x 1/2
18	STD551208	*Lockwasher, External No. 8
19	STD541008	*Nut, Hex 8-32

*Standard Hardware Item may be Purchased Locally.

Figure 3: Guard Assembly Exploded View

Figure 6 - Guard Assembly Parts List

Key No.	Part No.	Description	Key No.	Part No.	Description
1	816264	Guard	10	STD581050	*Ring, Retaining
2	120399	*Nut, Square 5/16-18	11	63270	Spreader
3	63258	Elbow, Dust	12	816341	Bearing (Includes Key #10)

Key No.	Part No.	Description	Key No.	Part No.	Description
4	63241	Bar, Anti-Kickback	13	60035	Grip
5	815816	Guide, Anti-Kickback	14	816070	Screw, Guard Clamp
6	STD551010	Washer, 13/64 x 5/8 x 1/32	15	166785-3	Screw, Wing 5/16-18 x 2-3/4
7	STD601103	*Screw, Pan Hd.	16	63538	Clamp, Guard
8	STD541231	Type "1" 10-32 x 3/8	17	STD510009	*Screw, Pan Hd. 8-32 x 1/2
9	815815	*Nut, Hex Jam 5/16-18	18	STD551208	*Lockwasher, External No. 8
		Pawl	19	STD541008	*Nut, Hex 8-32

*Standard Hardware Item may be Purchased Locally.

Always order by Part Number - Not by Key Number.

SPECIFICATIONS

Detailed technical specifications for the CRAFTSMAN 113.198210 Electronic Radial Arm Saw, such as motor horsepower, blade diameter, and cutting capacities, are not available in this excerpt. Please refer to the complete manual for comprehensive product specifications.

TROUBLESHOOTING

Troubleshooting guides and common issue resolutions for the CRAFTSMAN 113.198210 Electronic Radial Arm Saw are not included in this manual excerpt. For assistance with operational problems or malfunctions, consult the complete operator's manual or contact CRAFTSMAN customer support.

WARRANTY AND SUPPORT

Information regarding the product warranty and customer support contacts for the CRAFTSMAN 113.198210 Electronic Radial Arm Saw is not provided in this manual excerpt. Please refer to the original product documentation or the CRAFTSMAN official website for warranty details and support options.

This document is a reproduction of the original CRAFTSMAN 113.198210 Electronic Radial Arm Saw Operator Instructions & Parts Manual.

For further assistance, please refer to the complete manual or contact CRAFTSMAN customer service.