

Manuals+

[Q & A](#) | [Deep Search](#) | [Upload](#)

manuals.plus /

› [KETTLER](#) /

› [KETTLER Regatta 500 Water Rowing Machine User Manual](#)

KETTLER Regatta 500 (RO1031-100)

KETTLER Regatta 500 Water Rowing Machine User Manual

Model: Regatta 500 (RO1031-100)

INTRODUCTION

Thank you for choosing the KETTLER Regatta 500 Water Rowing Machine. This manual provides essential information for the safe and effective assembly, operation, and maintenance of your new fitness equipment. Please read all instructions carefully before use and retain this manual for future reference.

The KETTLER Regatta 500 is designed to provide a realistic and effective full-body workout with its water resistance system. Developed with rowing professionals, it features optimized ergonomics, a precise aluminum duo rail for smooth movement, and an intuitive training computer.

SETUP

1. Unpacking and Assembly

Carefully remove all components from the packaging. Ensure all parts are present according to the included assembly guide. Place the main frame on a flat, stable surface. Follow the step-by-step instructions in the separate assembly guide to connect the various parts, including the seat rail, footrests, and handle.

2. Filling the Water Tank

The Regatta 500 uses a water tank for resistance. Locate the fill port on the water tank. Using a funnel and a clean bucket, carefully fill the tank with clean tap water up to the indicated maximum fill line. Do not overfill. For optimal water quality and to prevent algae growth, it is recommended to use a water purification tablet (often included or available separately) as per its instructions.

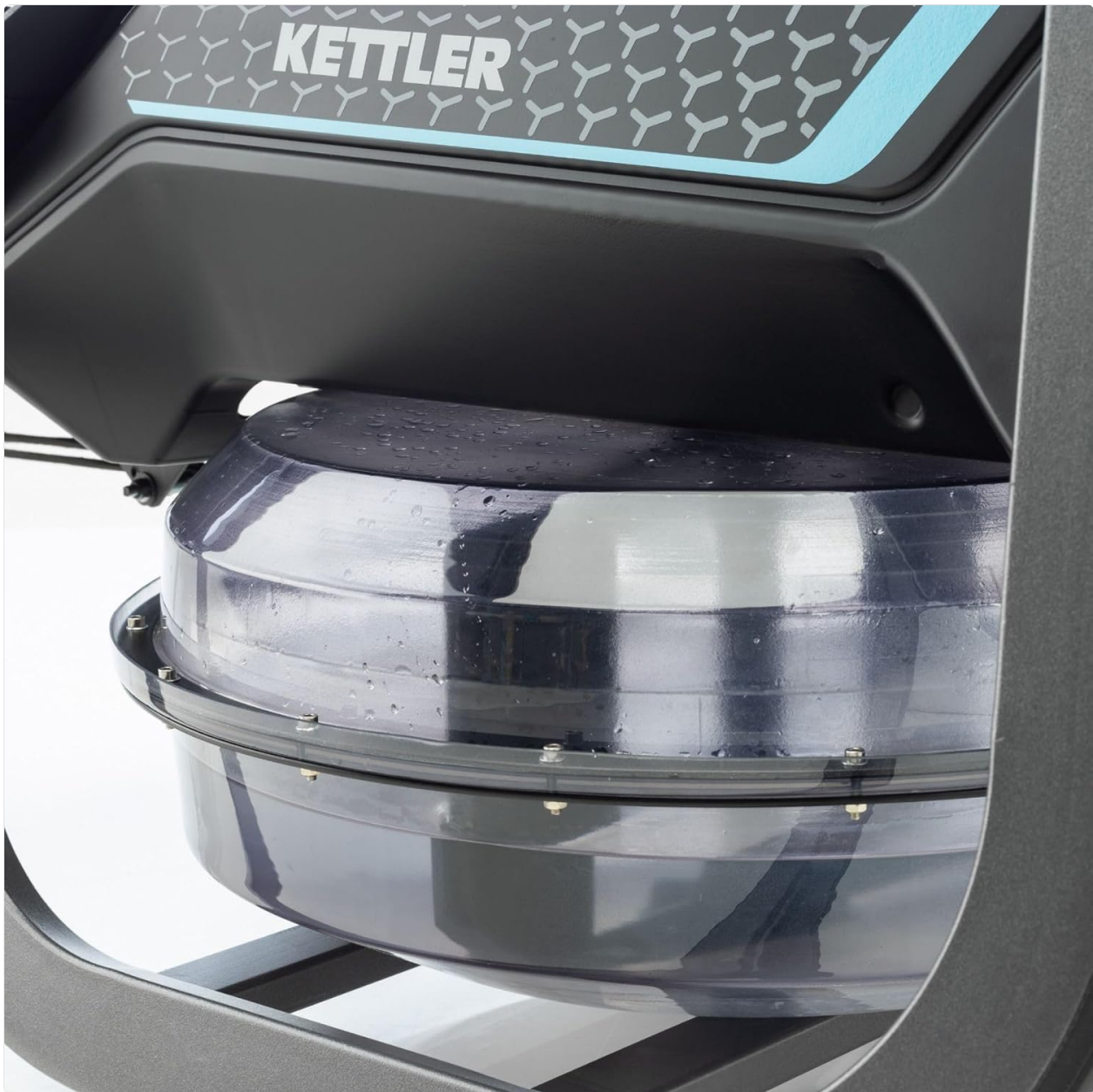


Image: Close-up of the water tank, which provides the resistance for rowing.

3. Console Battery Installation

The training computer requires AA batteries for operation. Locate the battery compartment on the back of the console. Insert the required AA batteries, ensuring correct polarity. Close the battery compartment securely.

OPERATING INSTRUCTIONS

1. Understanding the Training Computer

The Regatta 500 features an LCD training computer that displays 8 permanent training values. These typically include time, distance, strokes per minute, calories burned, and heart rate (if a compatible sensor is used). The console is operated with a simple one-button control for navigating modes and resetting values.



Image: The LCD training computer displaying workout metrics.

2. Adjusting Resistance

The water resistance mechanism of the Regatta 500 automatically adjusts based on the intensity of your stroke. The harder and faster you row, the greater the resistance. There are no manual resistance settings; the resistance is dynamic and mimics real rowing.

3. Proper Rowing Technique

For an effective and safe workout, maintain proper rowing form:

- **Catch:** Knees bent, shins vertical, arms extended forward, back straight, shoulders relaxed.
- **Drive:** Push off with your legs, then lean back slightly from the hips, and finally pull the handle towards your abdomen.

- **Finish:** Legs extended, body leaned back slightly, handle at the abdomen, elbows past the body.
- **Recovery:** Extend arms forward, then lean forward from the hips, and finally bend knees to slide forward.



Image: A user demonstrating proper rowing form on the KETTLER Regatta 500.

4. Transport and Storage

The Regatta 500 is equipped with integrated transport wheels for easy relocation. To move the machine, lift the rear end slightly and roll it to your desired location. For space-saving storage, the machine can be tilted upright. Ensure it is stable and secure in the upright position to prevent tipping.



Image: The rowing machine stored in an upright, space-saving position.

MAINTENANCE

1. Cleaning

Regularly wipe down the machine with a damp cloth after each use to remove sweat and dust. Avoid using abrasive cleaners or solvents that could damage the finish or electronic components. Ensure the console remains dry.

2. Water Treatment

To maintain water clarity and prevent bacterial growth in the tank, add a water purification tablet every 6-12 months, or as recommended by the tablet manufacturer. If the water becomes discolored or cloudy, it may need to be drained and refilled with fresh water and a new purification tablet.

3. Checking Connections

Periodically check all bolts, nuts, and moving parts to ensure they are securely fastened. Tighten any loose connections. Inspect the rowing strap and handle for any signs of wear or damage.

TROUBLESHOOTING

- **Console Not Displaying:** Check if the AA batteries are correctly installed and have sufficient charge. Replace batteries if necessary. Ensure all cable connections to the console are secure.
- **No Resistance or Uneven Resistance:** Verify that the water tank is filled to the appropriate level. If the water level is correct, inspect the impeller inside the tank for any obstructions.
- **Unusual Noises:** Check all moving parts, especially the seat rollers and the rail, for any debris or wear. Clean the rails and ensure the seat moves smoothly. Lubrication may be required for certain components as specified in the assembly guide.
- **Seat Not Moving Smoothly:** Clean the aluminum duo rails thoroughly. Inspect the seat rollers for damage or wear.

If you encounter issues not covered here, please refer to the detailed troubleshooting section in your full product manual or contact KETTLER customer support.

SPECIFICATIONS

Brand	KETTLER
Model Number	RO1031-100
Color	Black
Frame Material	Aluminum
Main Material	Kunststoffvinyle
Resistance Mechanism	Water, Hydraulic
Display Type	LCD
Meter Functions	Heart rate (with compatible sensor), Time, Distance, Strokes per minute, Calories
Max Weight Capacity	130 Kilograms
Power Type	Battery powered (AA batteries required)
Special Features	Ergonomic design, Transport wheels, Upright storage
Product Dimensions (L x W x H)	24 x 69 x 2.5 cm (folded/packaged dimensions); 2.19P x 2.19l x 0.94H meters (assembled dimensions)
Item Weight	55 Kilograms

WARRANTY INFORMATION

Specific warranty details for the KETTLER Regatta 500 Water Rowing Machine are typically provided with the product at the time of purchase. Please refer to the warranty card or documentation included in your product packaging for comprehensive information regarding coverage, terms, and conditions. You may also visit the official KETTLER website or contact their customer service for further details.

CUSTOMER SUPPORT

Should you require assistance with assembly, operation, maintenance, or troubleshooting that is not covered in this manual, please contact KETTLER customer support. Have your model number (RO1031-100) and purchase information ready when contacting support.

For the most up-to-date contact information and support resources, please visit the official KETTLER website: www.kettler.com