

Manuals+

[Q & A](#) | [Deep Search](#) | [Upload](#)

[manuals.plus](#) /

- › [GardePro](#) /
- › [GardePro E5S Trail Camera User Manual](#)

GardePro E5S

GardePro E5S Trail Camera

INSTRUCTION MANUAL

GardePro

Model: E5S

Introduction

The GardePro E5S Trail Camera is designed for capturing high-quality images and videos of wildlife. It features advanced optical design for superior night vision, fast motion detection, and a robust waterproof housing. This manual provides detailed instructions for setup, operation, maintenance, and troubleshooting to ensure optimal performance of your device.



Figure 1: Front view of the GardePro E5S Trail Camera.

Key Features

- **Advanced Optical Design:** Large f/1.6 aperture optical lens and low light sensitivity image sensor for night vision up to 100ft.
- **Crisp Clear Image and Video:** Delivers 64MP still images and 1296p HD video with H.264 technology in MP4/MOV format.
- **Fast Motion Detection:** Pre-activated technology for 0.1s trigger speed, 0.5s recovery time, and 90ft detection distance.
- **User-Friendly Interface:** Compact design with comfortable operation buttons, 2.4" color display, and intuitive menu system.
- **Durable and Waterproof:** IP66 rated for protection against dust and water.

Setup

1. Battery Installation

The GardePro E5S requires 8 AA batteries (not included). Open the camera housing by unlatching the side clips. Locate the battery compartment and insert the batteries according to the polarity indicators (+/-). Ensure the battery pack is securely seated before closing the compartment.



Figure 2: Open camera housing with battery compartment visible.

2. SD Card Insertion

Insert a standard-size SD card (up to 128GB, not included) into the SD card slot located at the bottom of the control panel. Ensure the card is inserted correctly until it clicks into place.



Figure 3: Bottom view with SD card and USB ports.

3. Powering On and Initial Settings

Once batteries and SD card are installed, slide the power switch from OFF to ON. The 2.4" color display will light up. You can navigate the menu using the directional buttons and OK button to set the date, time, and preferred capture mode (photo, video, or both).

Video 1: Quick start guide for GardePro E5/E5S/A5 Trail Cameras, demonstrating basic setup and menu navigation.

4. Mounting

The camera can be mounted using the included mounting strap or a tripod. For strap mounting, feed the strap through the loops on the back of the camera and secure it around a tree or post. For tripod mounting, use the 1/4-20 threaded insert at the bottom of the camera.



Figure 4: Camera mounted on a tree using the strap.



Figure 5: Back view of the camera with mounting bracket.

Operating

1. Capture Modes

The camera supports three capture modes: Photo, Video, and Photo + Video. Select your desired mode from the menu settings. The 2.4" display allows for easy navigation and preview of captured media.



Figure 6: Camera screen displaying a captured image.

2. Motion Detection

The camera features pre-activated technology for a fast 0.1s trigger speed and a super-fast 0.5s recovery time. It has a 90ft detection distance. The three PIR sensors (Passive Infrared) ensure comprehensive coverage, minimizing missed events.



Figure 7: Image clarity features of the camera.

3. Night Vision

Equipped with a large f/1.6 aperture optical lens and low light sensitivity image sensor, the camera allows more light in for clear night vision up to 100ft. The infrared light brightness automatically adjusts based on object distance.

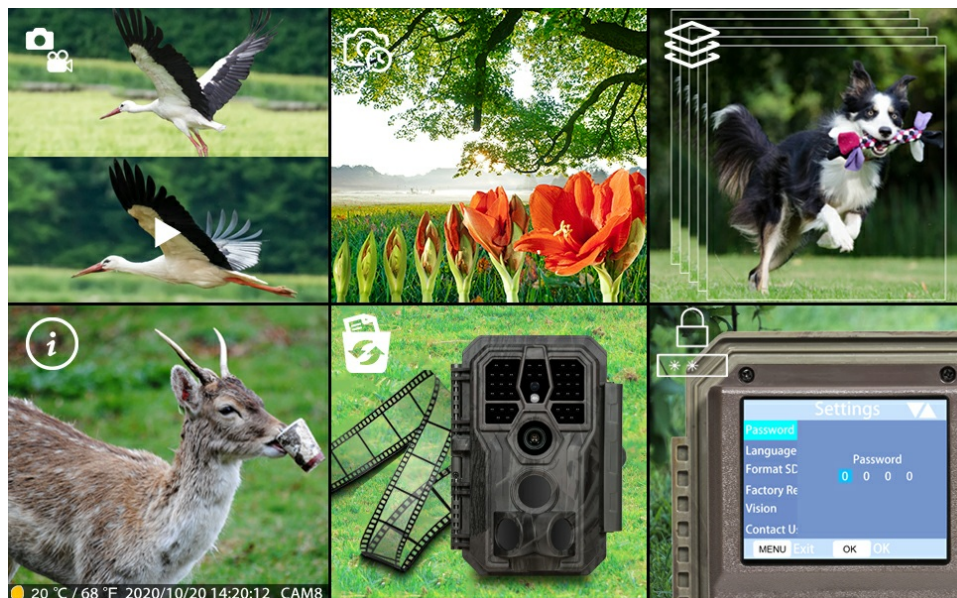


Figure 8: Night vision capabilities.

Maintenance

1. Cleaning

Regularly clean the camera lens and PIR sensors with a soft, dry cloth to ensure optimal performance. Avoid using abrasive materials or harsh chemicals.

2. Battery Life

The camera is designed for long battery life. Actual battery duration will vary based on usage frequency, video length, and environmental conditions. For best results, use high-quality alkaline or lithium AA batteries.

3. Environmental Conditions

The camera is IP66 waterproof, making it suitable for various outdoor conditions. It operates effectively within a

temperature range of -22°F to 158°F (-30°C to 70°C).

Troubleshooting

If you encounter issues with your GardePro E5S Trail Camera, consider the following:

- **No Power:** Ensure batteries are inserted correctly with proper polarity and are fully charged.
- **No Recordings:** Check if the SD card is inserted correctly and formatted. Verify that the camera is in the correct capture mode (Photo, Video, or Photo + Video).
- **Poor Image/Video Quality:** Clean the lens and PIR sensors. Ensure the camera is placed within optimal detection range and lighting conditions.
- **False Triggers:** Adjust PIR sensitivity settings in the menu. Ensure the camera is not pointed at heat sources or moving branches.

For further assistance, refer to the support information below.

Specifications

Effective Still Resolution	64 MP
Video Capture Resolution	1296p, 1080p
Night Vision Range	100 Feet
Trigger Speed	0.1s
Detection Distance	90ft
Field Of View	120 Degrees
Waterproof Rating	IP66
Power Source	8 AA Batteries (DC 12V input available)
Display	2.4" Color LCD
Connectivity	USB
Dimensions	4.2 x 2.4 x 5.6 inches

Warranty & Support

The GardePro E5S Trail Camera comes with a 2-year protection plan. For any questions, concerns, or technical support, GardePro offers 24/7 friendly services. Please contact them via their official support channels.

Support Email: support@zopudt.com

Related Documents - E5S



INSTRUCTION MANUAL

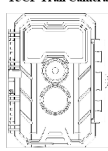
GardePro E6 Trail Camera Instruction Manual

Comprehensive instruction manual for the GardePro E6 Trail Camera, covering setup, features, operation, Wi-Fi connection, advanced settings, mounting, troubleshooting, and warranty information.



[GardePro E9PCF \[CLOSE FOCUS\] Wi-Fi Trail Camera - Features & Specifications](#)

Detailed information on the GardePro E9PCF [CLOSE FOCUS] Wi-Fi trail camera, featuring advanced macro lens, 64MP photos, 1296P video, Wi-Fi connectivity, and 30m night vision.



INSTRUCTION MANUAL

GardePro T5CF Trail Camera Instruction Manual - Setup, Features, and Troubleshooting

Comprehensive instruction manual for the GardePro T5CF Trail Camera. Learn about setup, features, advanced settings, mounting, troubleshooting, and technical specifications for optimal wildlife and scouting photography.



INSTRUCTION MANUAL

GardePro A3 Trail Camera Instruction Manual

Comprehensive instruction manual for the GardePro A3 Trail Camera, covering setup, operation, features, and technical specifications for wildlife observation and security.



INSTRUCTION MANUAL

GardePro E8P Trail Camera Instruction Manual

Comprehensive instruction manual for the GardePro E8P Trail Camera, detailing its features, setup, operation, Wi-Fi connectivity, advanced settings, mounting, troubleshooting, and warranty information.



INSTRUCTION MANUAL

GardePro E8 Trail Camera Instruction Manual

Comprehensive instruction manual for the GardePro E8 Wi-Fi trail camera, covering setup, operation, advanced settings, Wi-Fi connection, troubleshooting, and warranty.