

Closer Pets CP500

Closer Pets MiBowl Microchip Automatic Pet Feeder User Manual

Model: CP500

Brand: Closer Pets

INTRODUCTION

The Closer Pets MiBowl Microchip Automatic Pet Feeder is designed to provide controlled access to food for your pets, especially in multi-pet households. Utilizing microchip technology, it ensures that only designated pets can access their meals, preventing food theft and allowing for regulated diets. This feeder is suitable for both wet and dry food and features a quiet operation and a design focused on pet comfort.



Image: The Closer Pets MiBowl Microchip Automatic Pet Feeder, showing its sleek design and transparent food bowl cover.

Key Features

- **Microchip Access:** Automatically detects your pet's microchip or RFID collar tag, granting exclusive access to their food.
- **Multi-Pet Compatibility:** Can be programmed for up to 10 different pets, ideal for households with multiple animals or pets on special diets.
- **Food Versatility:** Suitable for both wet and dry pet food.
- **Odor and Pest Control:** The fully enclosed design helps keep food fresh and prevents pests from accessing the food.

- **Quiet Operation:** Features an ultra-quiet lid mechanism for a peaceful feeding experience.
- **Ergonomic Design:** Provides a natural feeding position, allowing pets to eat comfortably with paws on the ground.
- **Adjustable Opening:** Includes removable clips to adjust the opening width, accommodating smaller pets like kittens or puppies.

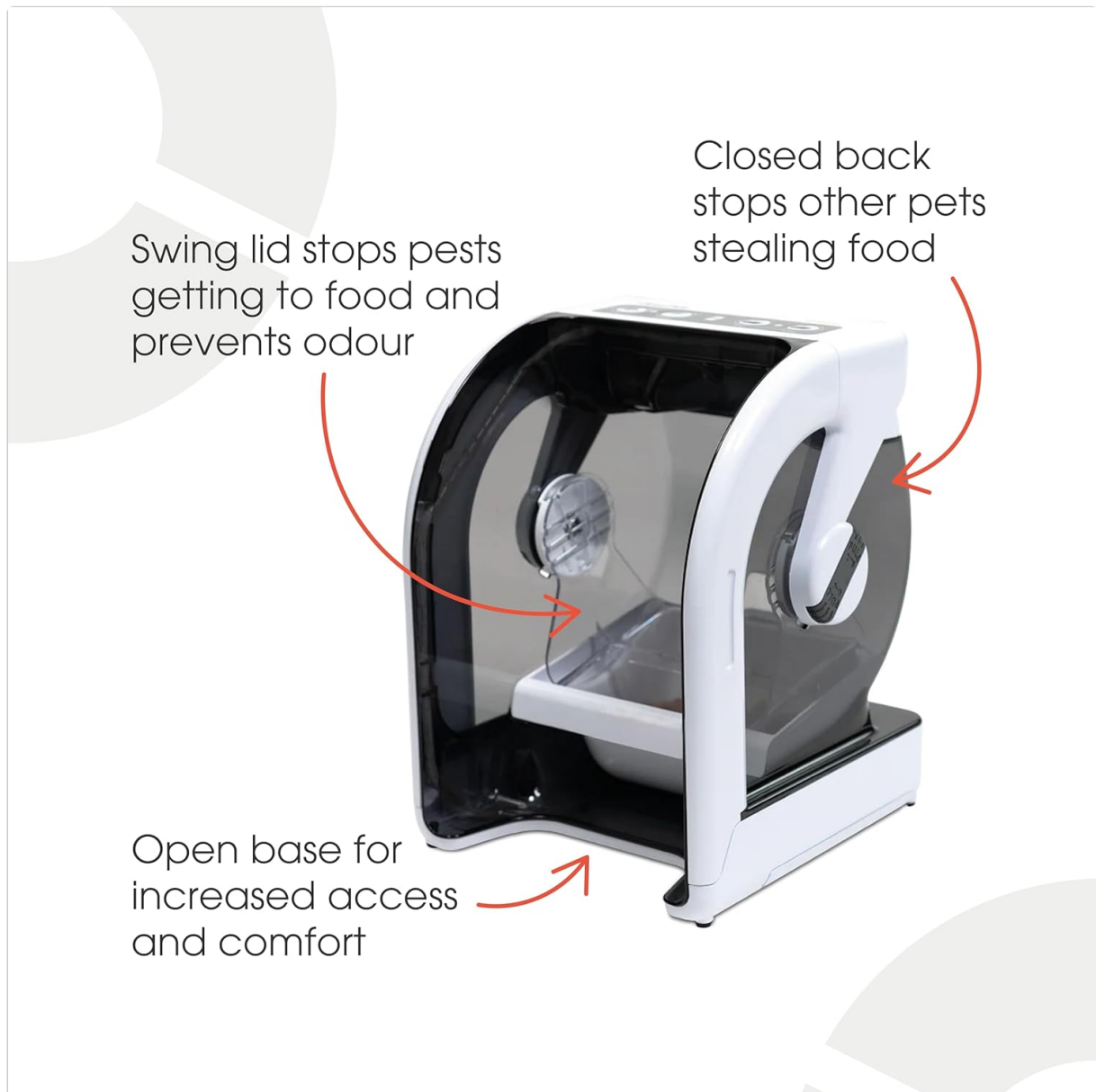


Image: Diagram illustrating key features of the MiBowl feeder, including the swing lid for pest control and the open base for increased pet comfort and access.

SETUP GUIDE

1. Unpacking and Battery Installation

Carefully remove all components from the packaging. The MiBowl feeder requires **4 x C-type batteries** (not included). Locate the battery compartment, typically on the underside or rear of the unit. Insert the batteries, ensuring correct polarity as indicated.

2. Programming Your Pet's Microchip or RFID Tag

The MiBowl feeder can be programmed to recognize your pet's existing microchip or the supplied RFID collar tag. Follow these steps to pair your pet:

1. Ensure the feeder is powered on.

2. Press and hold the '**PET**' button (often indicated by a paw print icon) on the control panel until the indicator light flashes.
3. Gently guide your pet's head into the feeder opening, allowing the feeder to scan their microchip. If using an RFID collar tag, hold the tag near the front of the feeder.
4. The indicator light will change (e.g., solid green) to confirm successful pairing.
5. Repeat for up to 10 different pets if you have multiple animals.

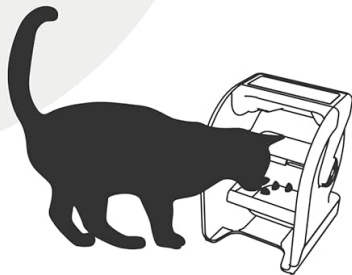


Image: Close-up view of the MiBowl control panel, showing the 'PET', 'TRAINING', battery indicator, 'OPEN', and 'CLOSE' buttons.

How does it work?



Only paired pets
have access to food



Unpaired pets
are locked out

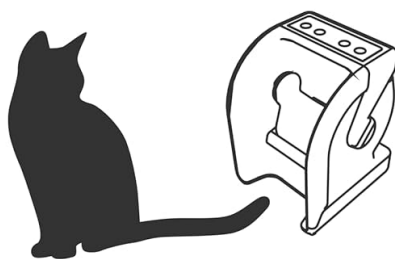


Image: Visual explanation of how the MiBowl works, showing that only paired pets can access the food, while unpaired pets are locked out.

3. Adjusting Opening Width (Optional)

For smaller pets, the MiBowl comes with removable clips that can be inserted to narrow the opening. This provides an extra shield and ensures comfortable access for kittens or small dogs.



Opening
with clips
3.5"



Opening
without clips
6"

Image: Comparison of the MiBow's opening width with and without the optional clips installed, showing 3.5 inches with clips and 6 inches without.

OPERATING INSTRUCTIONS

1. Filling the Feeder

Lift the transparent lid to access the food bowl. Fill the bowl with your pet's preferred wet or dry food. The bowl can hold up to 340g of food. Close the lid securely after filling.



Image: The MiBowl feeder with its lid open, revealing the food bowl filled with pet food and the transparent side clips.

2. Automatic Feeding

Once a programmed pet approaches the feeder, the MiBowl will detect their microchip or RFID tag. The lid will automatically open, allowing the pet to access their food. After the pet moves away, the lid will quietly close, keeping the food fresh and secure.



Image: A black and white cat with its head inside the MiBowl feeder, demonstrating how the pet accesses the food when the lid is open.

3. Training Mode

For pets new to automatic feeders, the MiBowl includes a 'TRAINING' mode. Press the 'TRAINING' button (indicated by a graduation cap icon) to keep the lid open for a set period, allowing your pet to become accustomed to the feeder without the lid movement. Refer to the full manual for specific training program details.

4. Manual Override

The control panel also features 'OPEN' and 'CLOSE' buttons, allowing you to manually open or close the lid as needed, for example, during cleaning or when introducing your pet to the feeder.

MAINTENANCE

Cleaning the Feeder

Regular cleaning is essential to maintain hygiene and ensure the longevity of your MiBowl feeder. The food bowl and lid components are designed for easy removal and cleaning.

- Remove any remaining food from the bowl.
- Carefully detach the food bowl and the transparent lid components.

- Wash these parts with warm, soapy water. Rinse thoroughly and dry completely before reassembling.
- Wipe the main unit with a damp cloth. Do not submerge the main unit in water.

Battery Replacement

When the battery indicator light on the control panel signals low power, replace all 4 x C-type batteries simultaneously to ensure optimal performance. Always use fresh, high-quality batteries.

TROUBLESHOOTING

| Problem | Possible Cause | Solution |
|---------------------------------------|--|---|
| Lid does not open for programmed pet. | Low batteries. Pet's microchip not correctly registered. Pet not positioned correctly for scanning. Interference from other electronic devices. | Replace all 4 C-type batteries. Re-register the pet's microchip (see Setup Guide). Ensure pet's head is fully within the feeder's detection zone. Move the feeder away from other electronics. |
| Lid does not close completely. | Obstruction in the lid mechanism. Low batteries. | Check for food debris or foreign objects obstructing the lid. Clean thoroughly. Replace batteries. |
| Unpaired pets can still access food. | Feeder is in Training Mode. Pet is reaching from the side or back. | Ensure Training Mode is deactivated. The MiBowl's fully enclosed design should prevent this. Ensure the feeder is placed against a wall or in a corner if necessary to prevent access from the rear. |
| Feeder is noisy during operation. | Mechanism requires cleaning or lubrication. | Clean the lid mechanism thoroughly. If noise persists, contact customer support. |

SPECIFICATIONS

| Feature | Detail |
|------------------------|---|
| Model Number | CP500 |
| Brand | Closer Pets |
| Dimensions (L x W x H) | 33 cm x 22.1 cm x 24.2 cm (13 in x 8.7 in x 9.5 in) |

| Feature | Detail |
|-----------------|-------------------------------------|
| Weight | 1.4 kg (3.1 lbs) |
| Power Source | 4 x C-type Batteries (not included) |
| Food Capacity | Up to 340g (dry or wet food) |
| Target Species | Cats, Small Dogs |
| Material | Durable Pet Feeder Material |
| Special Feature | Microchip Reader |

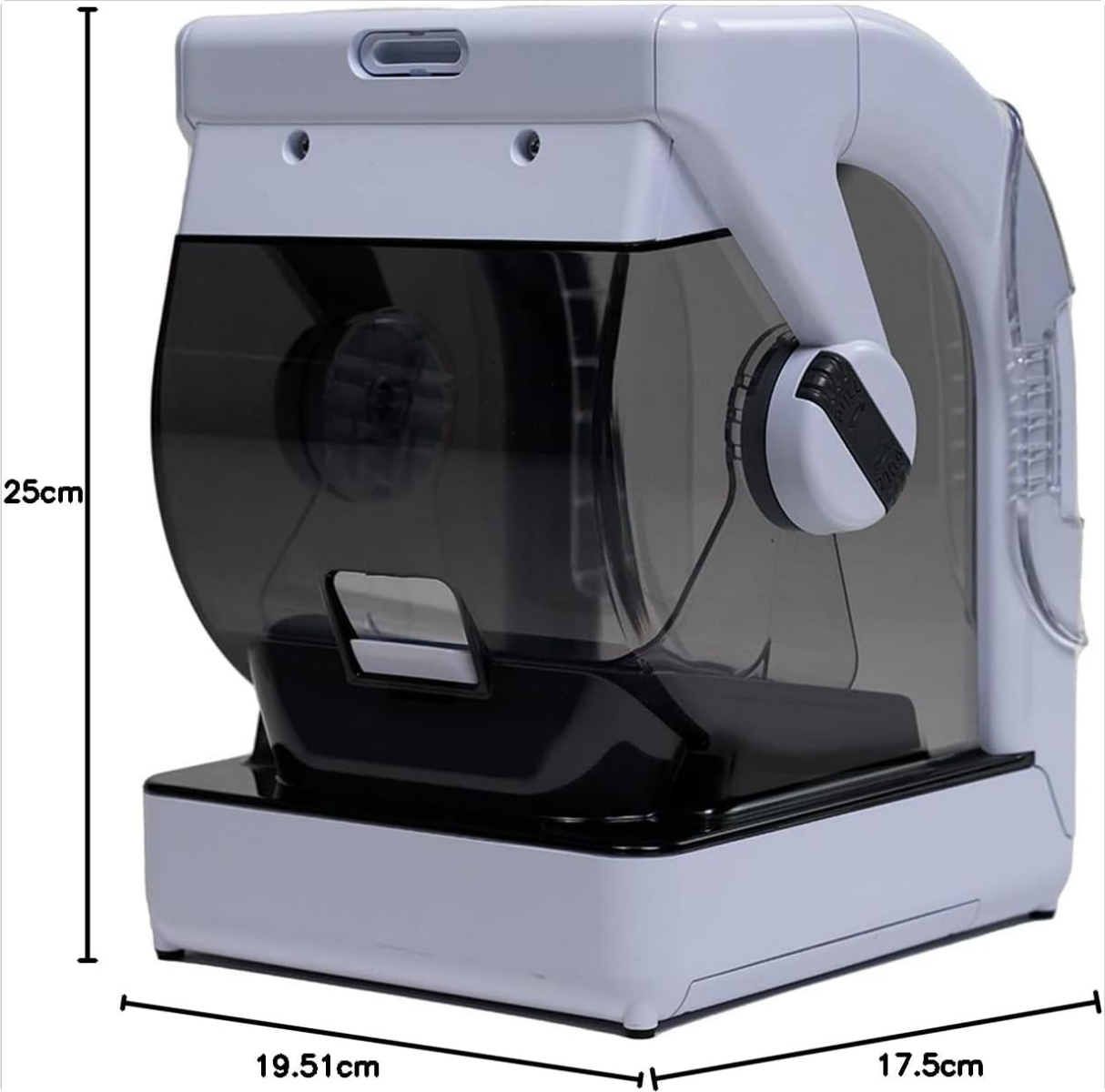


Image: Diagram showing the dimensions of the Closer Pets MiBowl feeder in centimeters.

WARRANTY AND SUPPORT

The Closer Pets MiBowl Microchip Automatic Pet Feeder is covered by a standard manufacturer's warranty. For specific warranty details, claims, or technical support, please refer to the warranty information provided with your product packaging or visit the official Closer Pets website. For general inquiries or assistance with your purchase, you may also contact the seller, Pet Mate Ltd.,

through the platform where the product was purchased.

IMPORTANT SAFETY INFORMATION

- This appliance is intended for household use only.
- Do not immerse the main unit in water or other liquids.
- Keep out of reach of children and pets when not in use or during maintenance.
- Ensure the feeder is placed on a stable, level surface.
- Use only the specified battery type (4 x C-type). Do not mix old and new batteries or different battery types.
- Dispose of used batteries responsibly according to local regulations.
- Do not attempt to modify or repair the feeder yourself. Refer to qualified personnel for service.

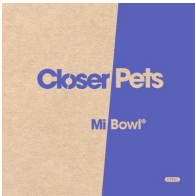


OFFICIAL PRODUCT VIDEOS

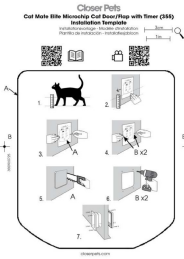
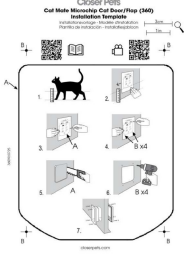
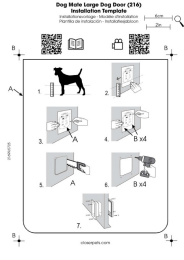
No official product videos from the seller were available for inclusion in this manual.

© 2024 Closer Pets. All rights reserved.

This manual is for informational purposes only. Specifications are subject to change without notice.

Related Documents - CP500

| | |
|---|---|
|  | <p>Closer Pets Mi Bowl CP500 User Manual and Guide</p> <p>Comprehensive user manual and guide for the Closer Pets Mi Bowl CP500 automatic pet feeder. Learn how to set up, operate, and troubleshoot this smart feeder for your pets.</p> |
|  | <p>Closer Pets Mi Bowl CP500 Automatic Pet Feeder: User Manual and Guide</p> <p>Comprehensive guide to setting up, using, and maintaining the Closer Pets Mi Bowl CP500 automatic pet feeder. Learn about pairing, training, controls, accessories, troubleshooting, and warranty information for your pet's feeding needs.</p> |
|  | <p>Closer Pets C500 Automatic Pet Feeder: User Instructions and Guide</p> <p>Comprehensive instructions for the Closer Pets C500 Automatic Pet Feeder with Digital Timer, covering setup, operation, safety, and maintenance. Includes details for models Ref. 365, CP365, and CP465.</p> |

| | |
|---|---|
|  | <p>Closer Pets Cat Mate Elite Microchip Cat Door/Flap with Timer (355) Installation Guide</p> <p>Step-by-step installation guide for the Closer Pets Cat Mate Elite Microchip Cat Door/Flap with Timer (355). Learn how to measure, cut, and install your new pet door.</p> |
|  | <p>Cat Mate Microchip Cat Door (360) Installation Template</p> <p>Installation template for the Cat Mate Microchip Cat Door/Flap (360) by Closer Pets. Provides step-by-step instructions for mounting the pet door.</p> |
|  | <p>Dog Mate Large Dog Door (216) Installation Guide - Closer Pets</p> <p>Step-by-step installation instructions for the Closer Pets Dog Mate Large Dog Door (216). Learn how to properly fit and install your new dog door.</p> |