



Manuals.plus /

- › [Changingtouch](#) /
- › [Changingtouch F16S 15.6" Smart Display Instruction Manual](#)

## Changingtouch F16S

# Changingtouch F16S 15.6" Smart Display Instruction Manual

Model: F16S | Brand: Changingtouch

[Introduction](#)   [Setup](#)   [Operating](#)   [Maintenance  
Warranty &  
Support](#)   [Troubleshooting](#)   [Specifications](#)

## 1. INTRODUCTION

The Changingtouch F16S Smart Display is a versatile 15.6-inch device designed to streamline your daily life. It functions as a digital calendar, photo frame, music player, voice assistant, and smart home hub. This manual provides essential information for setting up, operating, and maintaining your device.

# All-in-One Smart Display

Digital Calendar ✓

Music Player ✓

Google Home ✓

Digital Frame ✓

Portable TV ✓

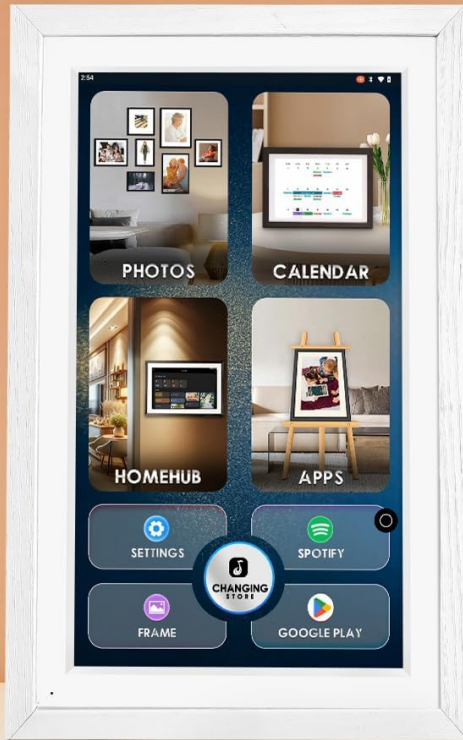
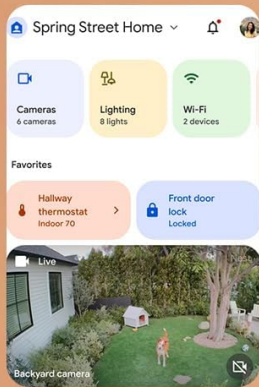


Figure 1: Overview of the Changingtouch F16S Smart Display's multi-functional interface.

## 2. SETUP

### 2.1 Unboxing and Initial Power On

Carefully remove all components from the packaging. The box contains the F16S Smart Display, a charging cable, and a power adapter. Connect the charging cable to the device and the adapter, then plug it into a power outlet to begin charging.

Your browser does not support the video tag. Please update your browser.

Video 1: Demonstrates how to start up your new Changingtouch F16S Smart Display.

### 2.2 Mounting and Placement

The F16S Smart Display can be placed on a desk using its integrated stand or mounted on a wall. The device supports both horizontal and vertical orientations, automatically adjusting the display.



Figure 2: The F16S Smart Display mounted on a refrigerator, illustrating the magnetic mount option (purchased separately).

### 2.3 Connecting to Wi-Fi

Follow the on-screen prompts during initial setup to connect your device to a Wi-Fi network. A stable internet connection is required for most smart features.

### 2.4 Syncing Calendars

The F16S supports syncing with various third-party calendars. Log in with your existing Google account or create a new one to easily share and sync calendar data. For Apple Calendar, install the Google Calendar app (using the same account) on your iPhone to sync iCloud calendar data.

# How to play photos on the smart display?

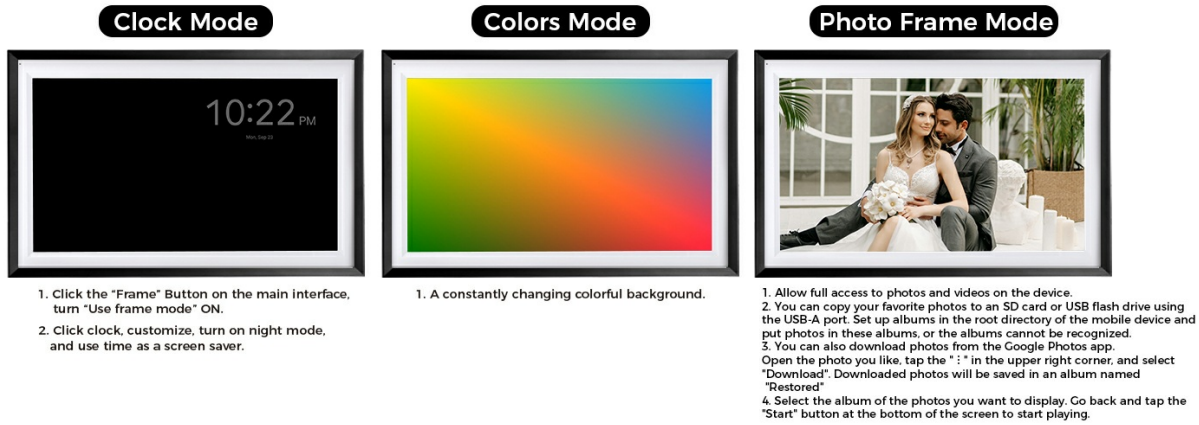


Figure 3: Visual guide for synchronizing your iPhone Calendar with Google Calendar for display on the F16S.

## 3. OPERATING

### 3.1 Navigation and Interface

The F16S features an intuitive touchscreen interface. Navigate through different functions like Photo, Calendar, Home Hub, and Apps directly from the main screen. Adjust brightness and use the home button as needed.

Your browser does not support the video tag. Please update your browser.

Video 2: Guide on using the home button and adjusting brightness on the F16S Smart Display.

### 3.2 Calendar Functions

Access your synced calendars to view events, appointments, and tasks. The display allows for easy sharing and syncing of data among family members. You can install various calendar apps via Google Play.

Your browser does not support the video tag. Please update your browser.

Video 3: Demonstrates how to stay organized using the digital calendar feature of the F16S.

### 3.3 Photo Frame Mode

Turn your smart display into a digital photo frame. Upload cherished photos and videos via Google Photos or USB/SD card. The anti-glare screen enhances photo viewing.

## All-in-One Home Control



Figure 4: Instructions for playing photos on the smart display in Photo Table Mode and Photos Mode.

## How to play photos on the smart display?



Figure 5: Instructions for playing photos on the smart display in Clock Mode, Colors Mode, and Photo Frame Mode.

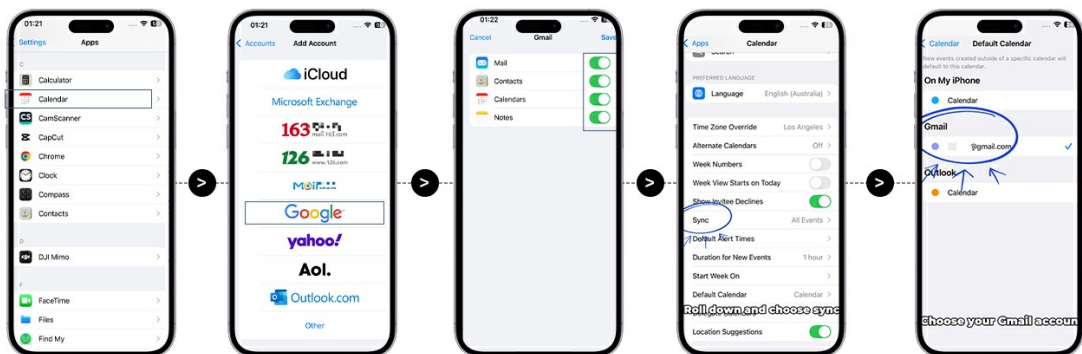
Your browser does not support the video tag. Please update your browser.

Video 4: Tutorial on how to upload photos to your F16S Smart Display via Google Photos.

### 3.4 Voice Assistant

Activate the Google Assistant by saying "Hey Google" to control smart home devices, set reminders, play music, and more.

## How to Synchronize iPhone Calendar to Google Calendar?



1. Go to iPhone Settings
2. Scroll down to the bottom and choose "Apps" choose "Calendar"
3. Tap "Calendar Accounts" and "Add Account"
4. Choose "Google" and sign in to your Google Account
5. Allow full access to Gmail.
6. Go back to the page for setting calendar
7. Scroll down and choose "Sync" Choose "All Events"
8. Go back and choose "Default Calendar"
9. Choose the Gmail account

Figure 6: Visual instructions for activating the 'Hey Google' voice assistant feature.

Your browser does not support the video tag. Please update your browser.

Video 5: Demonstrates how to use the "Hey Google" command to wake up and interact with your F16S Smart Display.

### 3.5 Chore Chart & Meal Planner

Utilize the chore chart to manage household tasks and the meal planner to organize your family's diet. These features help in creating routines and tracking responsibilities.

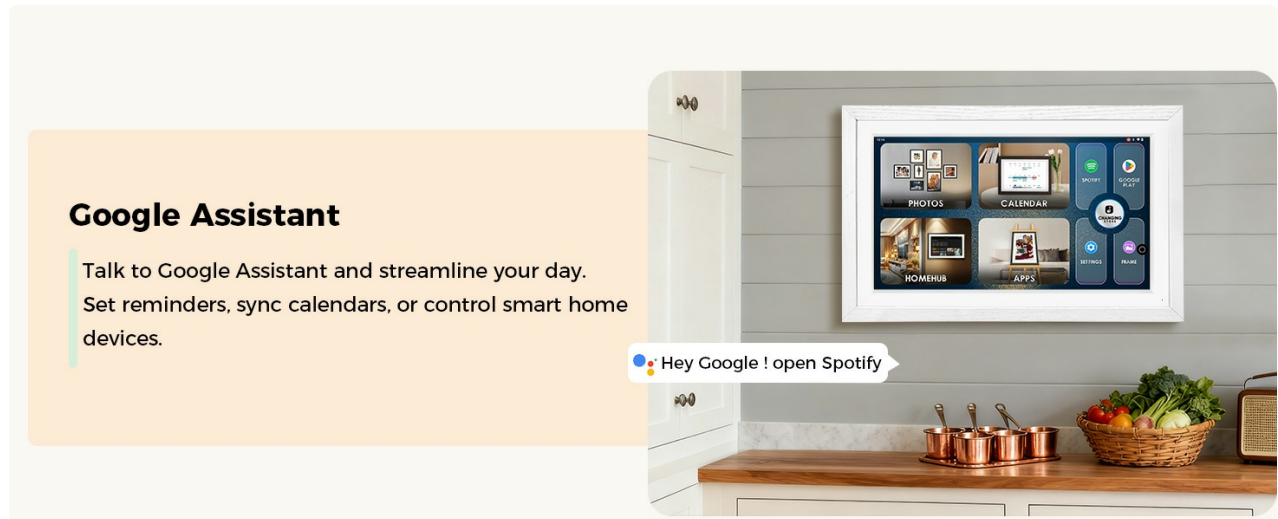


Figure 7: The Chore Chart feature helps turn routine chores into achievable goals for the family.

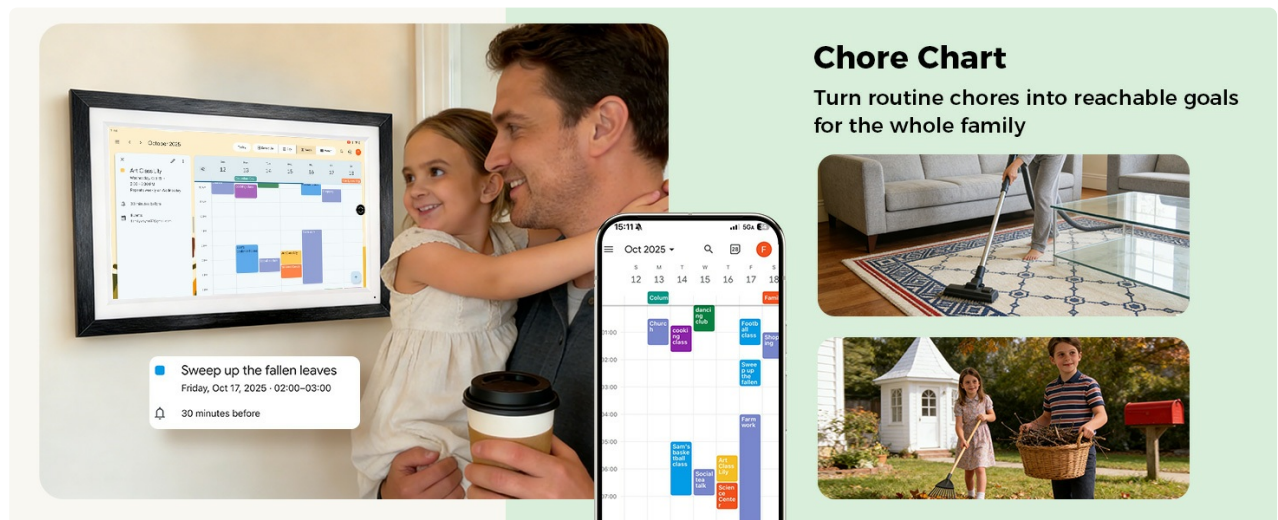


Figure 8: The Meal Planner allows you to download apps like Cozi from Google Play for shared calendars, grocery lists, and recipes.

## 4. MAINTENANCE

### 4.1 Cleaning the Device

To clean the screen, use a soft, lint-free cloth. For stubborn smudges, lightly dampen the cloth with water or a screen-safe cleaner. Avoid abrasive materials or harsh chemicals.

### 4.2 Software Updates

Ensure your device is connected to Wi-Fi to receive automatic software updates. Regular updates provide new

features, security enhancements, and performance improvements.

## 5. TROUBLESHOOTING

### 5.1 Device Not Powering On

- Ensure the power adapter is securely connected to both the device and a working power outlet.
- Check if the power outlet is functional by plugging in another device.
- If the device has a built-in battery, ensure it is sufficiently charged.

### 5.2 Wi-Fi Connection Issues

- Verify that your Wi-Fi router is on and broadcasting a signal.
- Check if the Wi-Fi password entered on the device is correct.
- Try restarting your Wi-Fi router and the F16S Smart Display.

### 5.3 Calendar Sync Problems

- Ensure your F16S is connected to the internet.
- Verify that you are logged into the correct Google account on both your device and the F16S.
- Check the sync settings within the calendar application on the F16S to ensure two-way sync is enabled if desired.

## 6. SPECIFICATIONS

Feature	Detail
Product Dimensions	12.05 x 18.35 x 0.99 inches
Item Weight	4.69 pounds
Screen Size	15.6 Inches
Resolution	1080p (FHD 1920x1080)
Display Type	Anti-Glare Touchscreen, 130% sRGB
Compatible Devices	Personal Computer (for certain functions)
Battery	1 12V battery (included)
Model Number	F16S

## 7. WARRANTY & SUPPORT

For warranty information and customer support, please refer to the documentation included in your product packaging or visit the official Changingtouch website. Protection plans are available for purchase separately to extend coverage.

Typical return policy allows for refund/replacement within 30 days of purchase.