

Negrari 2051DAM

Negrari Wall-Mounted Resin Utility Sink (Model 2051DAM)

Installation and Care Manual

INTRODUCTION

Thank you for choosing the Negrari 2051DAM Wall-Mounted Resin Utility Sink. This product is designed for durability and versatility, suitable for various indoor and outdoor applications such as laundry rooms, gardens, terraces, garages, and verandas. Manufactured from virgin polypropylene resin, it offers excellent resistance to common acids and atmospheric agents. This manual provides essential information for safe installation, proper use, and effective maintenance of your new utility sink.



Image: General view of the Negrari 2051DAM wall-mounted utility sink.

SAFETY INFORMATION

- Always wear appropriate personal protective equipment (PPE) such as gloves and eye protection during installation.
- Ensure the mounting surface is structurally sound and capable of supporting the weight of the sink when filled with water.
- Turn off the main water supply before beginning any plumbing work.
- Do not overtighten plumbing connections, as this may damage components.
- Keep small parts out of reach of children.
- If you are unsure about any installation steps, consult a qualified professional.

PACKAGE CONTENTS

Verify that all components are present before beginning installation:

- Negrari 2051DAM Utility Sink (White)
- Wall Fixing Kit (Dowel pins, screws)
- Self-cleaning Siphon
- Drain with overflow and cover cap
- Extended flexible pipe for siphon (with plastic nut 1" 1/4 and outlet Ø32 and Ø40)

Note: A mixer tap is not included and must be purchased separately.

SETUP AND INSTALLATION

The Negrari 2051DAM sink is designed for wall-mounted installation. Follow these steps carefully:

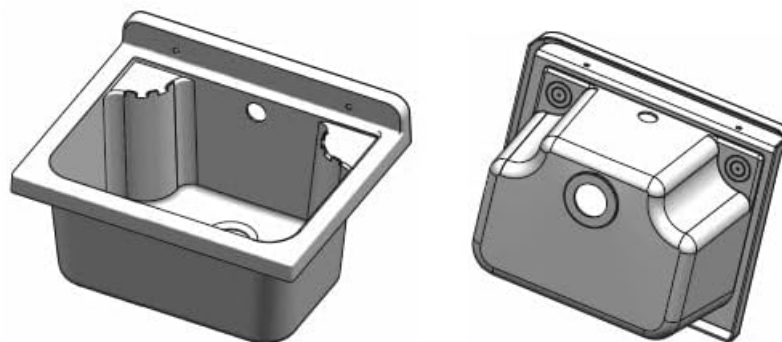
1. Prepare the Installation Area

1. Choose a suitable wall location, ensuring it is strong enough to support the sink and its contents.
2. Ensure access to water supply lines and a drainage point.
3. Mark the desired height for the sink. The sink dimensions are approximately 42 cm (width) x 34 cm (depth) x 21 cm (height).

2. Mark Drilling Points

Position the sink against the wall at the desired height and mark the locations for the wall fixing kit screws. Refer to the technical sheet for precise measurements.

Pilozzo Mini



Dimensioni/ dimensions (mm)

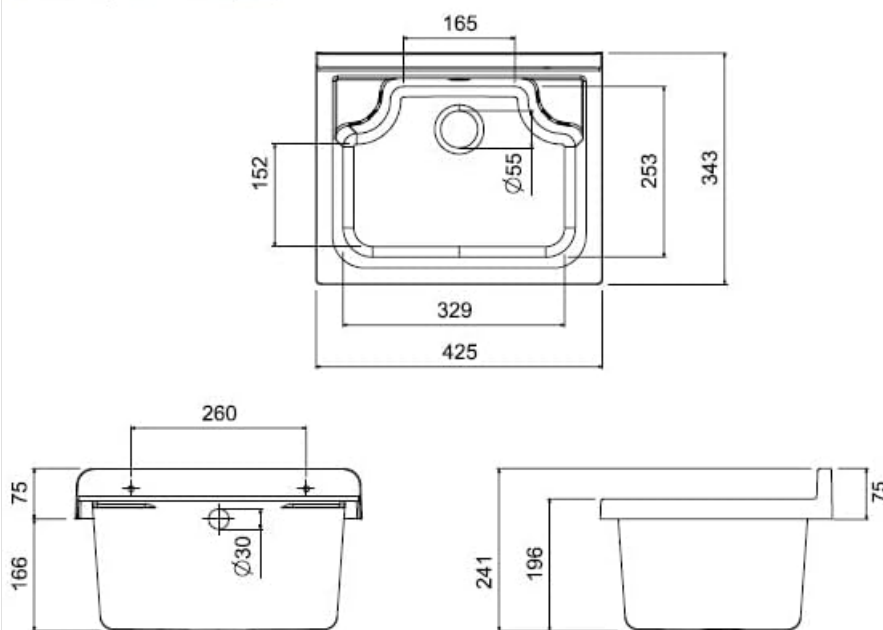


Image: Technical sheet with detailed dimensions and suggested drilling points.



Image: Product dimensions diagram. The sink measures 42cm in width, 34cm in depth, and 21cm in height.

3. Drill Holes and Install Wall Fixings

1. Drill holes at the marked points using an appropriate drill bit for your wall type.
2. Insert the provided dowel pins into the drilled holes.
3. Secure the sink to the wall using the screws from the wall fixing kit. Ensure the sink is level and firmly attached.



Image: Front view of the installed Negrari utility sink.

4. Install the Drain and Siphon

1. Assemble the drain with overflow and cover cap according to the instructions provided with the drainage kit.
2. Connect the self-cleaning siphon to the drain outlet.
3. Attach the extended flexible pipe to the siphon and connect it to your household drainage system. Ensure all connections are watertight.

5. Install the Mixer Tap (Optional)

1. The sink features a pre-drilled area for a mixer tap. If installing a tap, carefully drill through the designated area.
2. Mount the mixer tap according to its manufacturer's instructions.
3. Connect the tap's hot and cold water supply lines.



Image: Side view of the installed Negrari utility sink, highlighting its compact design.



Image: Rear view of the Negrari utility sink, showing the wall mounting points.

6. Test for Leaks

1. Once all connections are made, slowly turn on the main water supply.
2. Check all plumbing connections for any signs of leaks. Tighten connections as necessary, but do not overtighten.

OPERATING INSTRUCTIONS

The Negrari utility sink is designed for general washing and utility tasks. Its robust polypropylene construction makes it suitable for handling various liquids and materials.

- **General Use:** Use the sink for washing hands, cleaning tools, watering plants, or other utility purposes.
- **Temperature:** While resistant to various conditions, avoid pouring extremely hot liquids (boiling water) directly into the sink for prolonged periods, as this may affect the material over time.
- **Chemicals:** The sink is resistant to common household acids. However, avoid strong industrial chemicals or solvents that may damage the polypropylene.

- **Weight Capacity:** Do not place excessively heavy objects in the sink or apply undue pressure to its edges.

MAINTENANCE

Regular cleaning and proper care will ensure the longevity and appearance of your Negrari utility sink.

- **Cleaning:** Clean the sink regularly with mild soap or detergent and a soft cloth or sponge. Rinse thoroughly with water.
- **Stains:** For stubborn stains, a non-abrasive cleaner suitable for plastic surfaces can be used. Avoid abrasive pads or harsh chemical cleaners, which can scratch or dull the surface.
- **Drain Maintenance:** Periodically check the siphon for any blockages and clean as necessary to ensure proper drainage. The self-cleaning siphon helps prevent common clogs.
- **Outdoor Use:** For outdoor installations, periodically inspect the sink and its fixings for any signs of wear or weather damage. The material is UV-resistant, but extreme prolonged exposure may cause slight fading over many years.

TROUBLESHOOTING

Here are some common issues and their potential solutions:

Problem	Possible Cause	Solution
Water Leakage	Loose plumbing connections, damaged seals, improper siphon assembly.	Check and tighten all connections. Inspect seals and replace if damaged. Reassemble siphon correctly.
Slow Drainage	Clogged drain or siphon.	Remove the siphon and clean out any debris. Use a drain cleaner suitable for plastic pipes if necessary.
Sink Feels Unstable	Loose wall fixings, inadequate wall support.	Ensure wall screws are securely tightened. If the wall is not strong enough, consider adding additional support or relocating the sink.

SPECIFICATIONS

Feature	Detail
Brand	Negrari
Model Number	2051DAM
Material	Polypropylene (PP) Resin
Color	White
Dimensions (L x W x H)	42 cm x 34 cm x 21 cm (16.5 x 13.4 x 8.3 inches)
Weight	Approximately 4 kg (8.8 lbs)
Installation Method	Wall-mounted
Resistance	Resistant to common acids, weather agents, and UV rays.
Included Components	Drain with overflow, self-cleaning siphon, wall fixing kit.
Origin	Made in Italy

Campo di applicazione Installazione interna o esterna	Field of application <i>Internal or external installation</i>
Caratteristiche Ideale per esterni, non teme agenti atmosferici Resistente agli acidi e agli aggressori chimici Realizzato in materiale idoneo per alimenti Materiale plastico anti UV, non scolora nel tempo Totalmente lavabile Imballaggio singolo salvaspazio, impilabile Possibilità di utilizzo di griglia appoggiatutto Predisposizione fori rubinetto	Features <i>Suitable for outdoor use, resistant to frost and weather agents</i> <i>Resistant to acids and chemical substances</i> <i>Suitable for contact with food</i> <i>Anti UV rays plastic material, colour stable</i> <i>Easy to clean</i> <i>Smart packaging, space-saver and stackable</i> <i>Combinable with multi-purpose grid</i> <i>Predisposition for holes to install tap</i>
Informazioni tecniche Materiale : polipropilene lucido	Technical Information Material : polished polypropylene
Capacità : 11,5 litri	Capacity : 11,5 litri
Dimensioni: 42,5 x 34 x h 20 cm	Dimensions: 42,5 x 34 x h 20 cm
Sporgenza dal muro: 34 cm	Projection from wall: 34 cm
Dotazione Kit di fissaggio a parete Viti a testa esagonale Coprivite Doppia staffa di supporto Sifone con tubo estensibile con dado in plastica 1"1/4 e uscita Ø32 e Ø40 Piletta con troppopieno e tappo di copertura Griglia appoggiatutto su richiesta	Equipment Wall fixing kit Hexagonal head screws Coverscrew Double support bracket Siphon with extensible-flexible pipe with plastic nut 1"1/4 and outlet Ø32 e Ø40 Drain with overflow and cover cap Multi-purpose grid on demand

Image: Technical information table. This table provides details on the material (polished polypropylene), capacity (11.5 liters), dimensions (42.5 x 34 x 20 cm), projection from wall (34 cm), and included equipment.

WARRANTY INFORMATION

Negrari products are manufactured to high-quality standards. For specific warranty terms and conditions, please refer to the documentation provided at the time of purchase or contact Negrari customer support. Generally, products are covered against manufacturing defects for a period specified by local consumer protection laws.

CUSTOMER SUPPORT

If you have any questions, require assistance with installation, or need to report a problem, please contact Negrari customer support through their official website or the retailer where you purchased the product. Please have your model number (2051DAM) and purchase date available when contacting support.

For more information, visit the [Negrari Store on Amazon](#).